

## Handsomely Practical

We are pushing our Hi-Fi engineering ideas to extend into this entry-class network receiver with modern day wireless connectivity and the nostalgia of vinyl with a phono input terminal. The R-N303 is the perfect blend of technology and timeless elegance.



\*Streaming service availability varies by region.

### High Sound Quality

- High sound quality power amp and circuit design, inherited from Yamaha Hi-Fi technology
  - Equipped with four power transistors (two each, left/right)
  - Low-impedance, shortest circuit design
- Low-noise circuitry design and high-grade parts
  - Separate analog and digital section blocks
  - High-grade capacitors and resistors that are also used in high-end components
- High-resolution music playback with 192 kHz/24-bit DAC
- High-quality sound, in-house designed network module

### Wide Variety of Enjoyment

- Enjoy all your favorite modern music sources (network audio, streaming services, Bluetooth®, AirPlay®, FM radio)
- Compatible with popular music streaming services, including Spotify — and the latest: TIDAL and Deezer
- Digital audio input for TV or Blu-ray Disc™ player
- Phono input for vinyl playback

### Easy to Use, Elegant Appearance

- MusicCast compatibility with MusicCast app
- Gapless playback compatibility
- Screw-type speaker terminals
- Simple yet sophisticated design

#### Yamaha Eco-Products

With an advanced energy saving design, this product achieves a low power consumption of not more than two watts when in Network Standby mode.



Yamaha Eco-Label  
Yamaha Eco-Label is a mark that certifies products of high environmental performance.

#### Specifications

<b>Output Power</b>	
Minimum RMS Power	100 W + 100 W (8 ohms, 40 Hz–20 kHz, 0.2% THD)
Maximum Power	140 W + 140 W (8 ohms, 1 kHz, 10% THD)
Dynamic Power per Channel (8 / 6 / 4 / 2 ohms)	125 W / 150 W / 165 W / 180 W
<b>Network</b>	
LAN (DLNA ver. 1.5 (DMR)), Wi-Fi®	
<b>Supported Format</b>	
MP3, WMA, MPEG4 AAC 48 kHz / 320 kbps WAV, FLAC, AIFF 192 kHz / 24-bit, ALAC 96 kHz / 24-bit DSD 2.8 / 5.6 MHz	
<b>Bluetooth</b>	
(Version) 2.1 + EDR, (Profile) A2DP, AVRCP (Audio codec) SBC, AAC (receiving only)	
<b>Terminals</b>	
(Input) Analog Audio (PHONO, CD, LINE 1, LINE 2): 4 Optical Digital: 1, Coaxial Digital: 1 (Outputs) Analog Audio (Line2): 1, Headphone: 1 Speaker: 2 (4 terminals)	
<b>Tuner</b>	
FM / AM	
<b>Standby Power Consumption</b>	
0.1 W 1.7 W (Wired, Network Standby on) 1.8 W (Wi-Fi, Network Standby on) 1.8 W (Wireless Direct, Network Standby on) 1.8 W (Bluetooth, Network Standby on)	
<b>Dimensions (W x H x D)</b>	
17-1/8" x 5-1/2" x 13-3/8" (without antenna) 17-1/8" x 8" x 13-3/8" (with antenna up)	
<b>Weight</b>	
15.9 lbs.	
<b>Supplied Accessories</b>	
Remote control, batteries ( x 2), FM antenna cord, AM antenna cord	

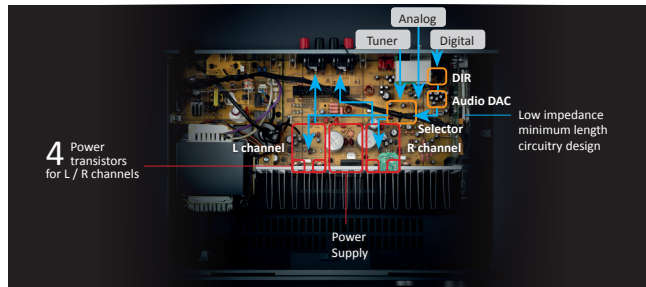
# Network Receiver R-N303

NEW PRODUCT BULLETIN

## High Sound Quality

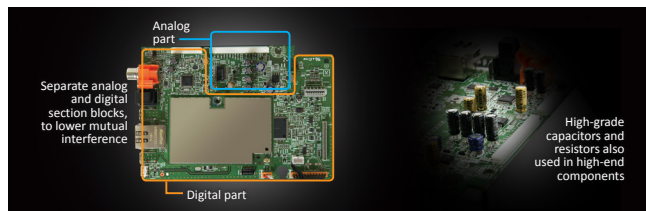
### Sonic Boom

Engineered for sonic power, the R-N303 is equipped with a high-quality, high-power amp, featuring a single push-pull and discrete configuration that delivers a maximum output of 140 watts/channel (8Ω). Its low-impedance design minimizes the lengths of the audio signal paths, while placing the power supply unit near the amp unit eliminates energy loss and achieves superior drivability for optimum sound reproduction with all kinds of speakers, providing exceptionally dynamic, exciting sound.



### Low-Noise Circuitry Design and High-Grade Parts

This receiver features circuitry design that prioritizes sound quality, drawing on the Yamaha Hi-Fi concept, and effectively lowering mutual interference by dividing the analog and digital sections into separate blocks. It utilizes carefully selected quality parts also used in high-end models, which have been thoroughly optimized for superior sound. The result is exceptionally low noise and superior S/N performance, for sound reproduction filled with a sense of spaciousness.



### Built for High Resolution

The R-N303 is compatible with high-resolution sound sources: DSD 5.6 MHz native and AIFF, WAV, FLAC 192 kHz/24-bit, as well as Apple® Lossless 96 kHz/24-bit. It uses a Burr-Brown 192 kHz/24-bit DAC to deliver superior S/N performance. Combined with the Yamaha original network module, the unit thoroughly draws out all the sonic merits of high-resolution sound sources, effectively reproducing even the subtle ambience of concert halls and delicate expressive nuances in the sound.



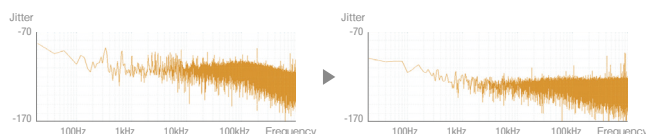
### High-Quality Sound, In-House Designed Network Module

The key device that determines the sound quality of network audio is the Yamaha original network module, which contains a high-precision, low-jitter clock that improves the reproduction of high-resolution sound sources. Pure audio clock generation without an added jitter constituent caused by the clock generator sharply lowers the creation of jitter noise when playing network, USB and Bluetooth® sources, and achieves further S/N improvement. It faithfully distinguishes delicate differences in the sonic characteristics of high-resolution sound.



Audio clock jitter of conventional modules

Audio clock jitter of the new module

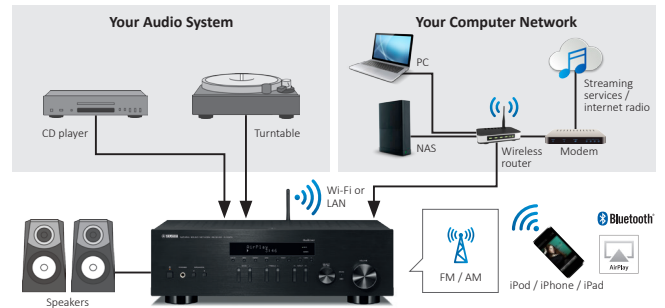


• AirPlay works with iPhone, iPad, and iPod touch with iOS 4.3.3 or later, Mac with OS X Mountain Lion or later, and Mac and PC with iTunes 10.2.2 or later. Supports iOS 7 or later for setup using Wireless Accessory Configuration. "Made for iPod," "Made for iPhone," and "Made for iPad" mean that an electronic accessory has been designed to connect specifically to iPod, iPhone, or iPad, respectively, and has been certified by the developer to meet Apple performance standards. Apple is not responsible for the operation of this device or its compliance with safety and regulatory standards. Please note that the use of this accessory with iPod, iPhone, or iPad may affect wireless performance. AirPlay, iPad, iPhone, iPod, iPod nano, and iPod touch are trademarks of Apple Inc., registered in the U.S. and other countries. • The Bluetooth® word mark and logos are registered trademarks owned by Bluetooth SIG, Inc. and any use of such marks by Yamaha Corporation is under license. Other trademarks and trade names are those of their respective owners. • The Wi-Fi CERTIFIED Logo is a certification mark of the Wi-Fi Alliance. The Wi-Fi Protected Setup Identifier Mark is a mark of the Wi-Fi Alliance. "Wi-Fi", "Wi-Fi Protected Setup", "Wi-Fi Direct" and "Miracast" are marks or registered marks of the Wi-Fi Alliance. • Spotify and Spotify logo are registered trademarks of the Spotify Group. • Napster and the Napster logo are trademarks and registered trademarks of Rhapsody International. • JUKE and JUKE logo are registered trademarks of Media-Saturn-Holding GmbH. • TIDAL and TIDAL logo are registered trademark of Aspiro AB in the European Union and other countries. • Deezer and Deezer logo are international trademarks of Deezer S.A., registered in France and other countries. • DLNA® and DLNA CERTIFIED™ are trademarks or registered trademarks of Digital Living Network Alliance. All rights reserved. Unauthorized use is strictly prohibited.

## Wide Variety of Enjoyment

### Enjoy All Music Sources

This network receiver lets you enjoy music from CD players and turntables, and it can play music you have stored on your computer or NAS (network-attached storage). Moreover, with just this single device, you can play music wirelessly from smartphones or tablets using Bluetooth or AirPlay®, as well as a variety of music from streaming services and FM/AM radio.



### MusicCast Expands Entertainment Possibilities

MusicCast uses your existing wireless network to deliver music and audio enjoyment. It can stream digital music content from your smartphone, PC or NAS to other MusicCast devices in your home. It can also share the music from external devices such as a CD player or TV connected to the R-N303. Audio content from Bluetooth-connected smartphones or tablets can also be streamed to MusicCast devices in multiple rooms.



### Digital Audio Input for TV or Blu-ray Disc™ Player

This receiver is equipped for digital audio input with both optical and coaxial terminals. The optical is for receiving audio from a TV, and the coaxial for receiving audio from a Blu-ray Disc player. The audio stays in the digital domain, giving you pure, pristine dynamic sound for all your entertainment sources, from sports and other programs to movies and concerts.



## Easy to Use

### Fingertip Control

Tap, swipe and control with the free MusicCast app. Download the intuitively designed app and seamlessly operate the R-N303 and other MusicCast devices.

