



The RFBA floor box is built for multiple applications and environments

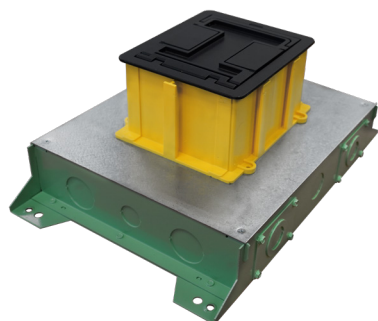
Recessed Floor Boxes for Concrete

RFBA2R, RFBA4R, RFBA6R, RFBA10R

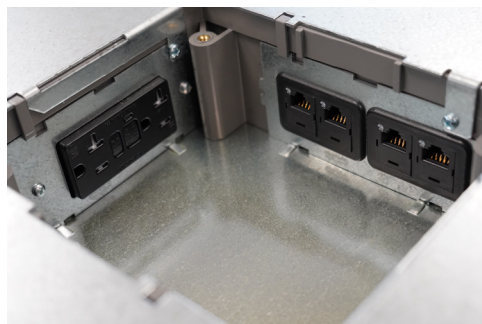
RFBA Series of Floor Boxes are versatile recessed activation solutions that provide power, communication and/or audio/video services to open space areas, or directly to workstations. The floor boxes come in various sizes and depths, including 2, 4, 6 and 10-gangs to best fit your specific application. The boxes utilize FloorPort series covers and can be installed in carpet, wood, tile and polished concrete floor coverings. An optional terrazzo ring is available for the 2 and 4-gang boxes for use with bare concrete and terrazzo applications. The RFBA series is designed with improved wire and cable routing, allowing for easier wire pulling in adjacent compartments and around corners.

Features & Benefits

- **Suitable for Various Applications.** Steel and on-grade (epoxy coated) to meet your specific installation requirements with support for installation in carpet, wood flooring, tile, terrazzo and polished concrete..
- **Various Gang and Depth Options Available.** Various Gang and Depth Options Available. Choose from either 2, 4, 6 or 10-gang boxes to fit your application. The 2 and 4-gang options are available in either a shallow (2.5") depth or standard (3.0") depth box..
- **Common Mounting Plates.** All models share the same mounting plates, allowing for easier configuration and specification.
- **Numerous Conduit Knockouts.** Features knockouts on all sides and bottom of box to allow for greater installation flexibility to work within your environment..
- **FloorPort Activation Covers.** Provides TopGuard protection from water, dirt and debris plus added strength and durability. Available in brushed aluminum and five decorative powder coat finishes: Black, Brass, Nickel, Gray and Bronze.
- **Improved Cable Management.** Internal compartments feature improved wire and cable routing for easier wire pulling in adjacent compartments and around corners.
- **Post-Pour Features:** Allows for adjustment post-pour and features removable dividers that can be installed or removed before or after the concrete pour.



Rectangular extension ring can be used to extend height of box up to 4 inches




All models share eight (8) common device plates, allowing for data and power within the same box



Interior compartment of box features rounded corners for improved cable routing

Compliance

 **cULus Listed:** Metallic Outlet Boxes for tile, terrazzo, carpet and wood floors.
File E2961 Guide QCIT

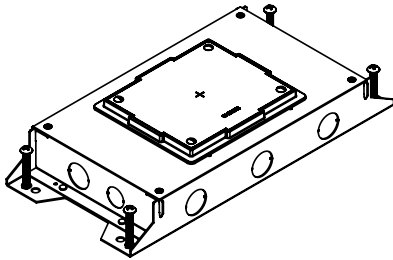
RFBA Series Floor Boxes with Rectangular Activations Selection Guide

| Box Model | Box Type | Box Capacity | Box Depth | Conduit Size | Cover Type |
|-------------|-------------|--------------|-----------|--------------|-----------------|
| RFBA2R25 | Above Grade | 2-Gang | 2.5" | ¾" – 1 ¼" | FloorPort |
| RFBA2R25OG | On-Grade | 2-Gang | 2.5" | ¾" – 1 ¼" | FloorPort |
| RFBA2R30 | Above Grade | 2-Gang | 3.0" | ¾" – 2"* | FloorPort |
| RFBA2R30OG | On-Grade | 2-Gang | 3.0" | ¾" – 2"* | FloorPort |
| RFBA4R25 | Above Grade | 4-Gang | 2.5" | ¾" – 1 ½" | FloorPort |
| RFBA4R25OG | On-Grade | 4-Gang | 2.5" | ¾" – 1 ½" | FloorPort |
| RFBA4R30 | Above Grade | 4-Gang | 3.0" | ¾" – 2"* | FloorPort |
| RFBA4R30OG | On-Grade | 4-Gang | 3.0" | ¾" – 2"* | FloorPort |
| RFBA6R30 | Above Grade | 6-Gang | 3.0" | ¾" – 2"* | Large FloorPort |
| RFBA6R30OG | On-Grade | 6-Gang | 3.0" | ¾" – 2"* | Large FloorPort |
| RFBA10R55 | Above Grade | 10-Gang | 5.5" | ¾" – 2" | Large FloorPort |
| RFBA10R55OG | On-Grade | 10-Gang | 5.5" | ¾" – 2" | Large FloorPort |

* Additional 2HUB accessory is needed on the 2, 4 and 6-gang boxes if using a 2" conduit feed to the box. Largest knockout without the 2HUB accessory on the 2, 4 and 6-gang boxes is 1 ¼".

Resource RFBA Series Floor Boxes with Rectangular Activations Ordering Information

RFBA2R25



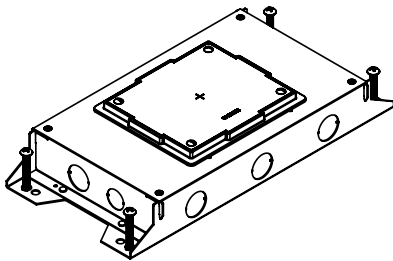
2-Gang RFBA Floor Box, Shallow 2.5" Depth – Steel floor box designed for above grade installations. Features 2-gangs of box capacity with 3" available behind plates. When ordering device plates for box, 2 blank device plates (Cat. No. RFBAB) must also be ordered to seal off wire and cable routing passageways. Fully adjustable before and after concrete pour. Designed for carpet, wood flooring, tile, terrazzo and polished concrete applications.

Concrete Pour: Minimum concrete pour without collar is 2.5". If using the collar, pour should be 3".

Sold Separately:

- FloorPort Covers
- Device Plates

RFBA2R25OG



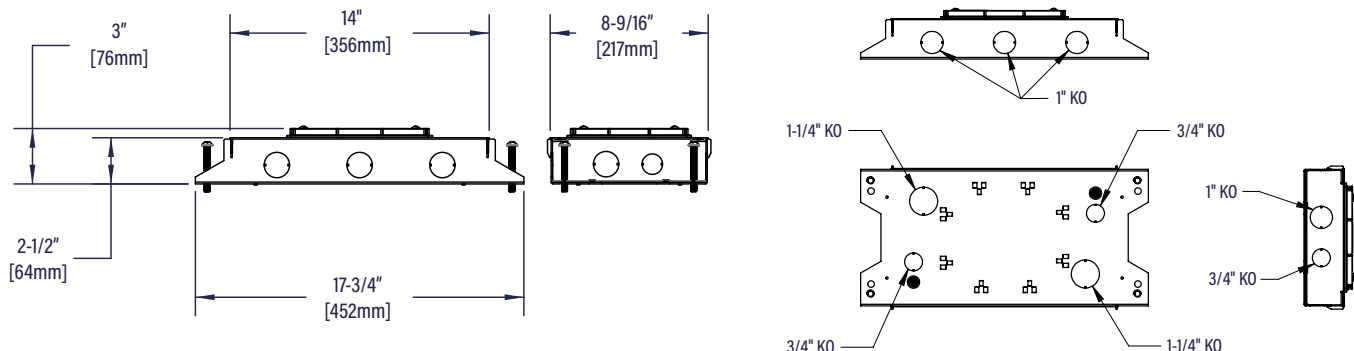
2-Gang RFBA On-Grade Floor Box, Shallow 2.5" Depth – Steel floor box designed for on-grade installations with a fusion-bonded epoxy for use on metal reinforcement bar and related accessories before encapsulating in concrete. Features 2-gangs of box capacity with 3" available behind plates. When ordering device plates for box, 2 blank device plates (Cat. No. RFBAB) must also be ordered to seal off wire and cable routing passageways. Fully adjustable before and after concrete pour. Designed for carpet, wood flooring, tile, terrazzo, and polished concrete applications.

Concrete Pour: Minimum concrete pour without collar is 2.5". If using the collar, pour should be 3".

Sold Separately:

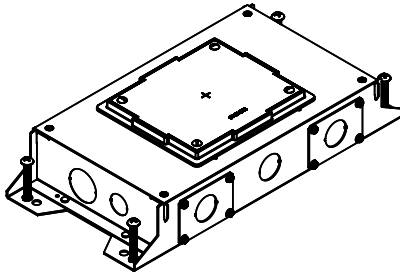
- FloorPort Covers
- Device Plates

Dimensions:



Resource RFBA Series Floor Boxes with Rectangular Activations Ordering Information

RFBA2R30



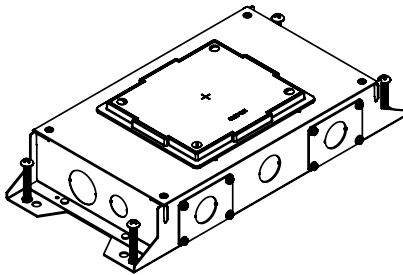
2-Gang RFBA Floor Box, Standard 3.0" Depth – Steel floor box designed for above grade installations. Features 2-gangs of box capacity with 3" available behind plates. When ordering device plates for box, 2 blank device plates (Cat. No. RFBAB) must also be ordered to seal off wire and cable routing passageways. Fully adjustable before and after concrete pour. Designed for carpet, wood flooring, tile, terrazzo and polished concrete applications..

Concrete Pour: Minimum concrete pour without collar is 3". If using the collar, pour should be 3.5".

Sold Separately:

- FloorPort Covers
- Device Plates

RFBA2R30OG



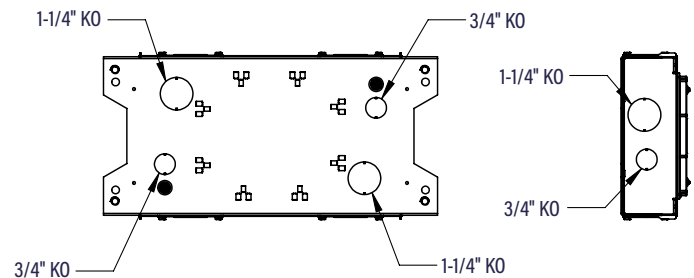
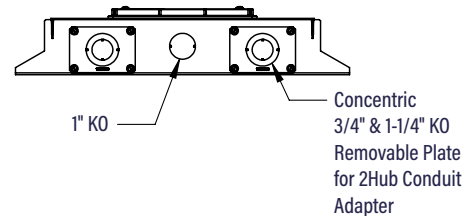
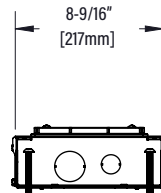
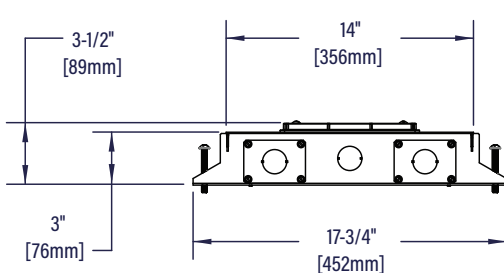
2-Gang RFBA On-Grade Floor Box, Standard 3.0" Depth – Steel floor box designed for on- grade installations with a fusion-bonded epoxy for use on metal reinforcement bar and related accessories before encapsulating in concrete. When ordering device plates for box, 2 blank device plates (Cat. No. RFBAB) must also be ordered to seal off wire and cable routing passageways. Features 2-gangs of box capacity with 3" available behind plates. Fully adjustable before and after concrete pour. Designed for carpet, wood flooring, tile, terrazzo, and polished concrete applications.

Concrete Pour: Minimum concrete pour without collar is 3". If using the collar, pour should be 3.5".

Sold Separately:

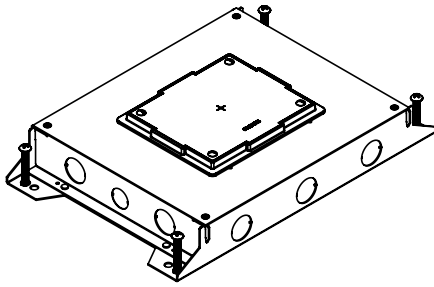
- FloorPort Covers
- Device Plates

Dimensions:



Resource RFBA Series Floor Boxes with Rectangular Activations Ordering Information

RFBA4R25



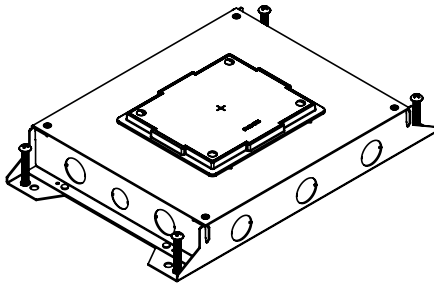
4-Gang RFBA Floor Box, Shallow 2.5" Depth – Steel floor box designed for above grade installations. Features 4-gangs of box capacity with at least 2 3/4" available behind device plates. Fully adjustable before and after concrete pour. Designed for carpet, wood flooring, tile, terrazzo and polished concrete applications.

Concrete Pour: Minimum concrete pour without collar is 2.5". If using the collar, pour should be 3".

Sold Separately:

- FloorPort Covers
- Device Plates

RFBA4R25OG



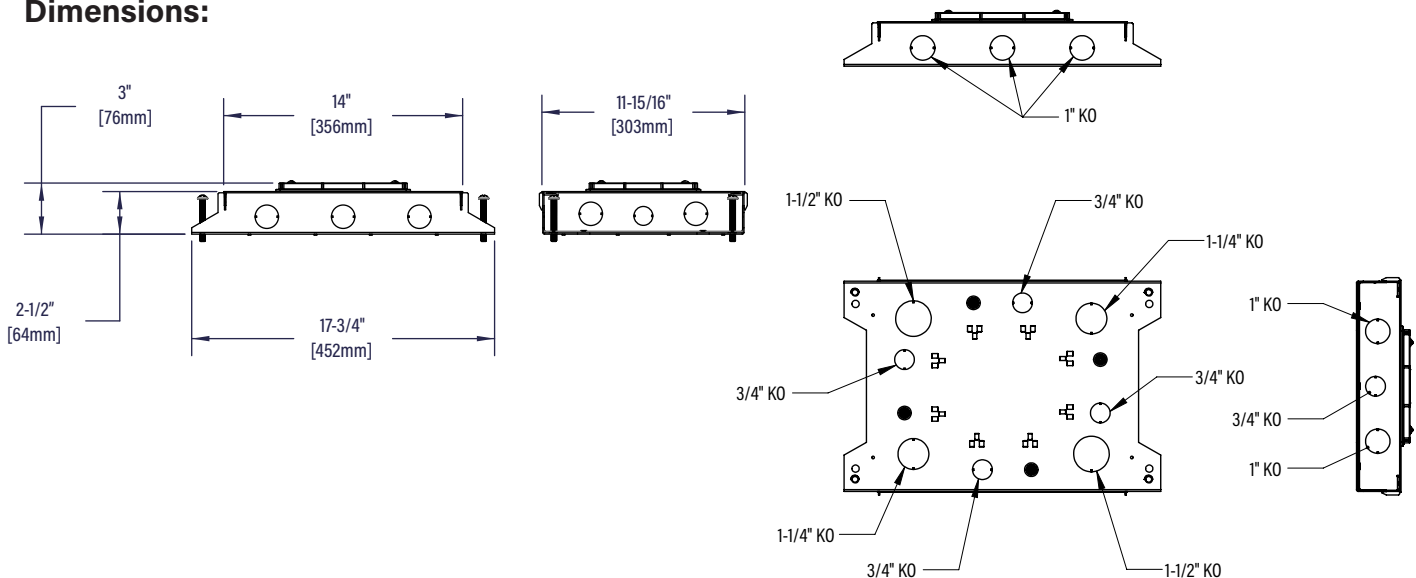
4-Gang RFBA On-Grade Floor Box, Shallow, 2.5" Depth – Steel floor box designed for on- grade installations with a fusion-bonded epoxy for use on metal reinforcement bar and related accessories before encapsulating in concrete. Features 4-gangs of box capacity with at least 2 3/4" available behind device plates. Fully adjustable before and after concrete pour. Designed for carpet, wood flooring, tile, terrazzo, and polished concrete applications.

Concrete Pour: Minimum concrete pour without collar is 2.5". If using the collar, pour should be 3".

Sold Separately:

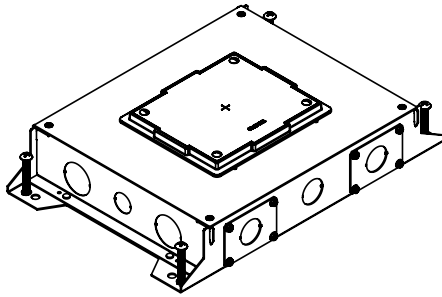
- FloorPort Covers
- Device Plates

Dimensions:



Resource RFBA Series Floor Boxes with Rectangular Activations Ordering Information

RFBA4R30



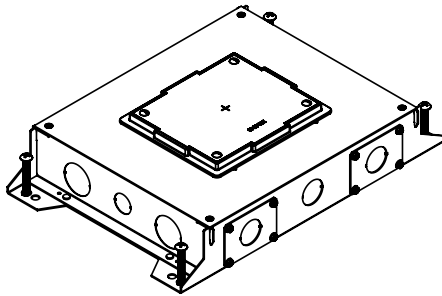
4-Gang RFBA Floor Box, Standard 3.0" Depth – Steel floor box designed for above grade installations. Features 4-gangs of box capacity with at least 2 3/4" available behind device plates. Fully adjustable before and after concrete pour. Designed for carpet, wood flooring, tile, terrazzo and polished concrete applications.

Concrete Pour: Minimum concrete pour without collar is 3". If using the collar, pour should be 3.5".

Sold Separately:

- FloorPort Covers
- Device Plates

RFBA4R30OG



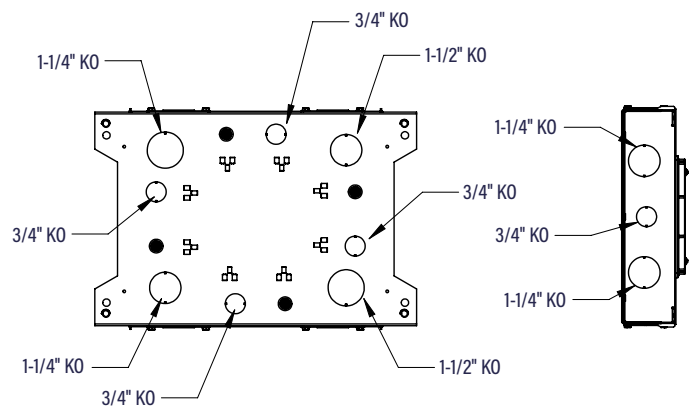
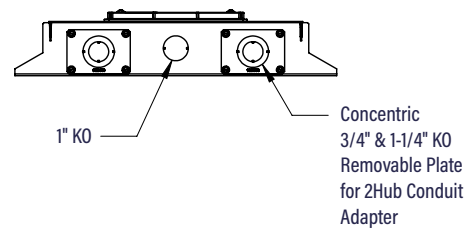
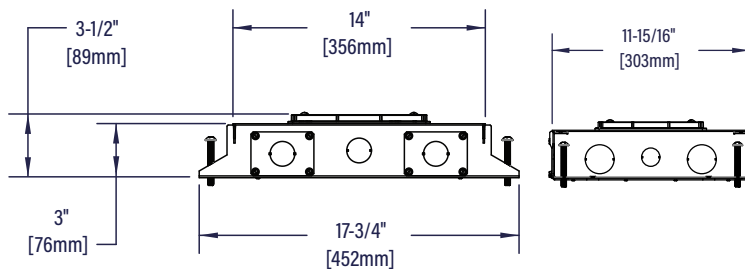
4-Gang RFBA On-Grade Floor Box, Standard 3.0" Depth – Steel floor box designed for on-grade installations with a fusion-bonded epoxy for use on metal reinforcement bar and related accessories before encapsulating in concrete. Features 4-gangs of box capacity with at least 2 3/4" available behind device plates. Fully adjustable before and after concrete pour. Designed for carpet, wood flooring, tile, terrazzo, and polished concrete applications.

Concrete Pour: Minimum concrete pour without collar is 3". If using the collar, pour should be 3.5".

Sold Separately:

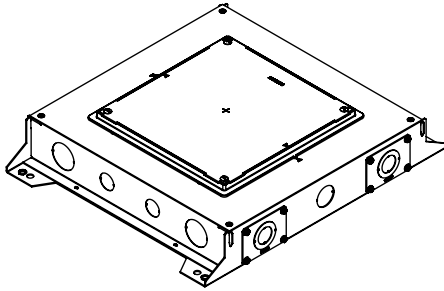
- FloorPort Covers
- Device Plates

Dimensions:



Resource RFBA Series Floor Boxes with Rectangular Activations Ordering Information

RFBA6R30



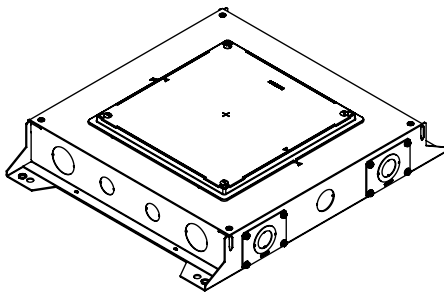
6-Gang RFBA Floor Box, 3.0" Depth - Steel floor box designed for above grade installations. Features 6-gangs of box capacity with at least 2 9/16" available behind device plates. Fully adjustable before and after concrete pour. Designed for carpet, tile, and wood flooring. Terrazzo and bare concrete kit not available.

Concrete Pour: minimum concrete pour without collar is 3". If using the collar, pour should be 3.5".

Sold separately:

- Device Plates
- Large FloorPort Covers

RFBA6R30OG



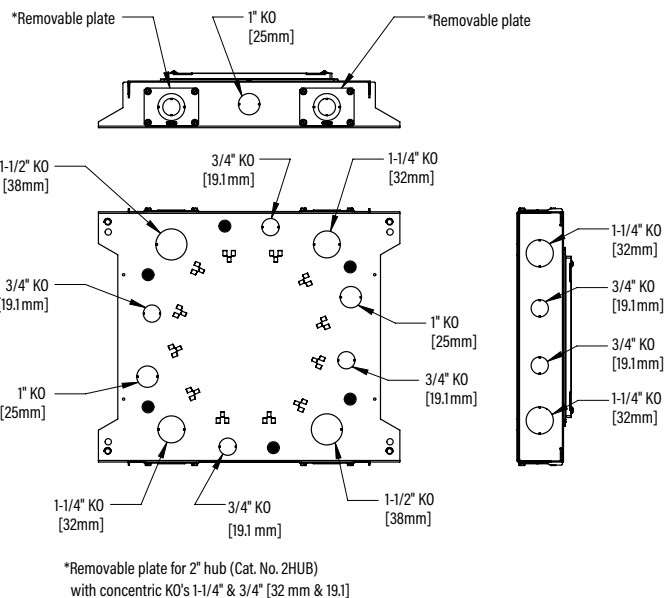
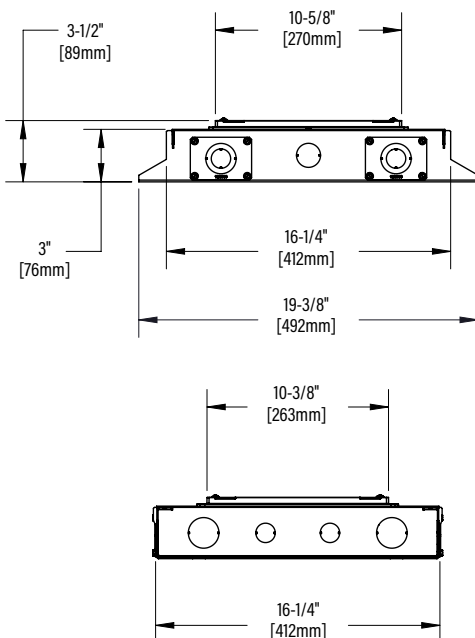
6-Gang RFBA On-Grade Floor Box, Standard 3.0" Depth - Steel floor box designed for on-grade installations with a fusion-bonded epoxy for use on metal reinforcement bar and related accessories before encapsulating in concrete. Features 6-gangs of box capacity with at least 2 9/16" available behind device plates. Fully adjustable before and after concrete pour. Designed for carpet, tile, and wood floor applications. Terrazzo and bare concrete kit not available.

Concrete Pour: minimum concrete pour without collar is 3". If using the collar, pour should be 3.5".

Sold separately:

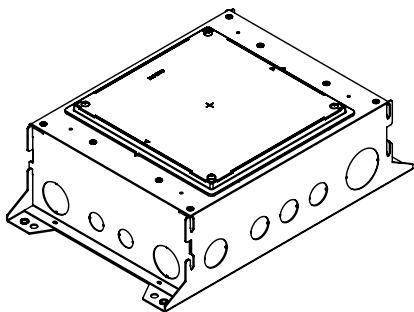
- Device Plates
- Large FloorPort Covers

Dimensions:



Resource RFBA Series Floor Boxes with Rectangular Activations Ordering Information

RFBA10R55



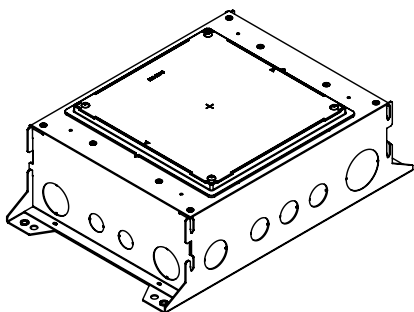
10-Gang RFBA Floor Box, 5.5" Depth - Steel floor box designed for above grade installations. Features 10-gangs of box capacity with at least 2 1/2" available behind device plates. Fully adjustable before and after concrete pour. Designed for carpet, tile, and wood flooring. Terrazzo and bare concrete kit not available.

Concrete Pour: minimum concrete pour without collar is 5.5". If using the collar, pour should be 6".

Sold separately:

- Device Plates
- Large FloorPort Covers

RFBA10R55OG



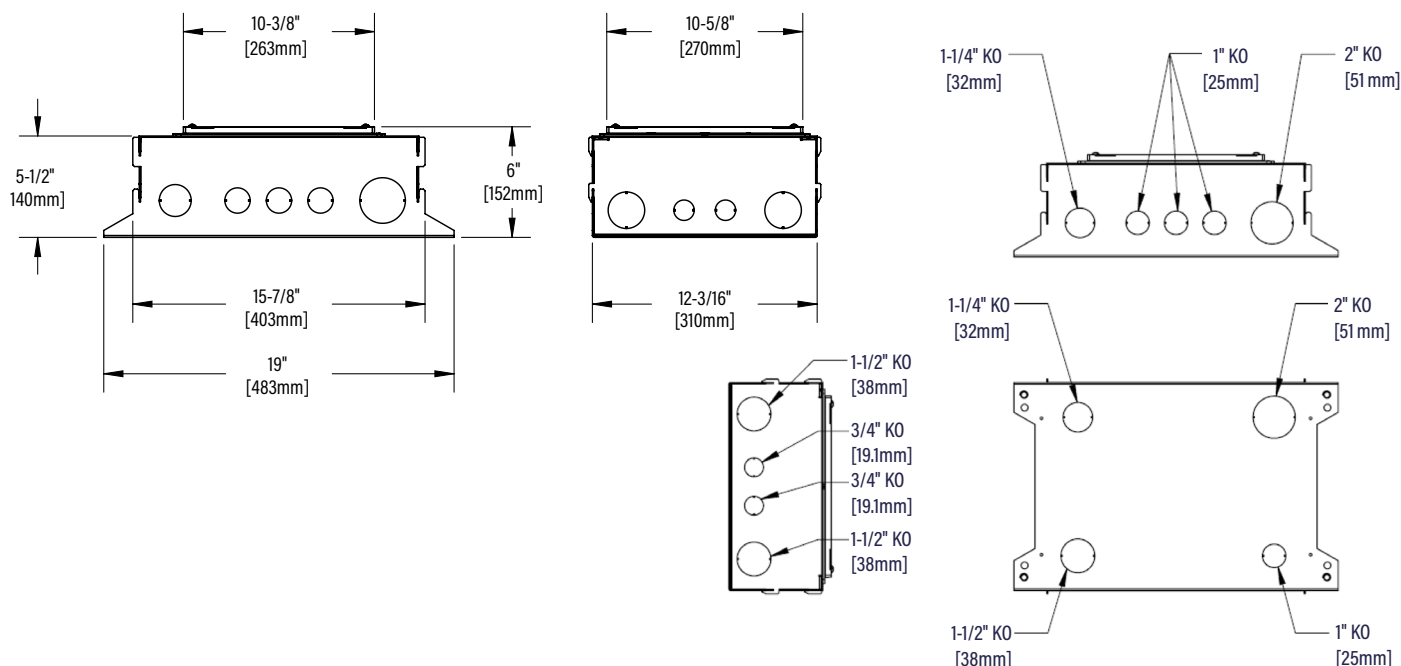
10-Gang RFBA On-Grade Floor Box, 5.5" Depth - Steel floor box designed for on-grade installations with a fusion-bonded epoxy for use on metal reinforcement bar and related accessories before encapsulating in concrete. Features 10-gangs of box capacity with at least 2 1/2" available behind device plates. Fully adjustable before and after concrete pour. Designed for carpet, tile, and wood flooring. Terrazzo and bare concrete kit not available.

Concrete Pour: minimum concrete pour without collar is 5.5". If using the collar, pour should be 6".

Sold separately:

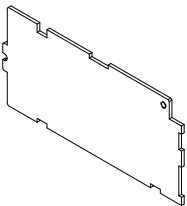
- Device Plates
- Large FloorPort Covers

Dimensions:



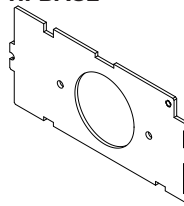
Resource RFBA Series Floor Boxes Accessories Ordering Information

RFBAB



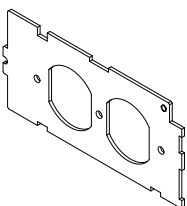
Blank Device Plate - Closes off unused gangs.

RFBAS2



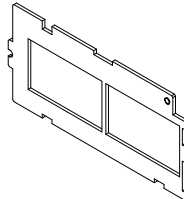
1.59" Single Device Plate - Receptacle opening 1 9/16" (40mm)

RFBADP



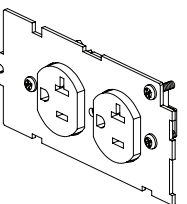
Duplex Device Plate - Accepts standard 15 Amp & 20 Amp Duplex Receptacles.

RFBA6A



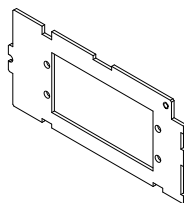
Communications Plate - Accepts bezels for common communications devices. Including TracJack, Series II, Keystone, Lucent

RFBADP20TR



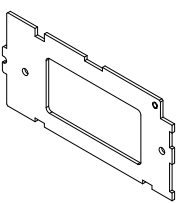
Duplex Device Plate - Pre-wired with tamper-resistant 20 Amp PlugTail receptacle. Receptacle available in black or white.

RFBAAAP



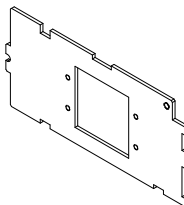
AAP Device Plate - Accepts Extron® Electronics AAP devices (sold separately)

RFBADEC



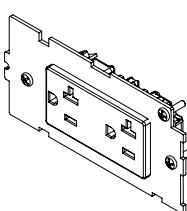
Decorator Device Plate - Accepts Decorator Style Receptacles, Communication or A/V Devices.

RFBAMAAP



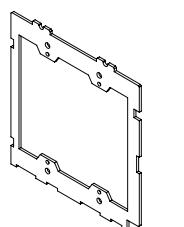
MAAP Device Plate - Accepts two (2) Legrand AVIP or Extron® Electronics MAAP Series Devices (sold separately)

RFBADEC20TR



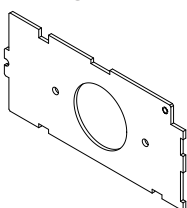
Duplex Device Plate - Pre-wired with tamper-resistant 20 Amp PlugTail receptacle. Receptacle available in black or white.

RFBA10-2G



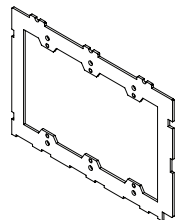
2-Gang Adapter Plate for 10-Gang Box

RFBAS1



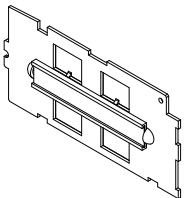
1.39" Single Device Plate - Receptacle opening 1 3/8" (35mm)

RFBA10-3G



3-Gang Adapter Plate - for 10-Gang Box

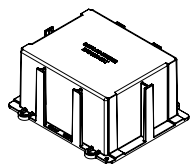
RFBADJ4LB



Device Mounting Plate - Accepts 4 jacks of data and includes removable label holder and labels

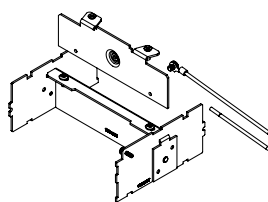
Resource RFBA Series Floor Boxes Accessories Ordering Information

RFBA24R4EXT



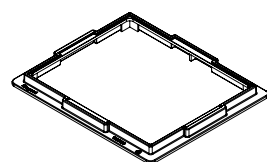
Rectangular Extension Ring for 2 and 4-Gang Boxes - Used to extend height of floor box. Cut to desired level after concrete pour. To be used with flanged FloorPort covers only.

RFBA24FF



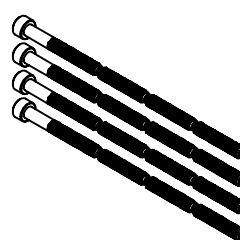
Furniture Feed Barrier Kit for 2 and 4-Gang Boxes - Used to separate power and communication services. Used in combination with FloorPort Furniture Feed Covers (FPFFTC). Covers sold separately

RFBA24R05EXT



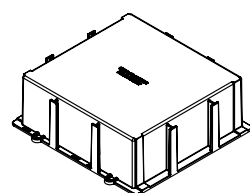
Rectangular 1/2" Collar - Extends 0.5" above surface of box.

FPCTKIT



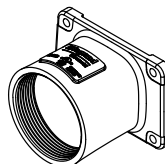
Break-Away Screw - Four (4) break-away screws used to mount flanged FloorPort covers on deeper pours

RFBA610R4EXT



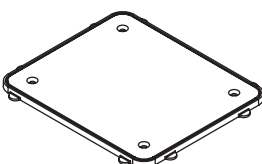
4" Rectangular Extension Ring for 6/10-Gang Boxes - Used to extend height of floor box. Cut to desired level after concrete pour. To be used with flanged FloorPort covers only.

2HUB



2" Conduit Transition Hub - Trade size 2" die cast zinc conduit fitting allows for 2" conduit to transition into a shallow box design. Includes: die cast fitting, gasket, and mounting screws.

FP-CTR



Bare Concrete & Terrazzo Ring - Nonmetallic ring for use on bare polished concrete and terrazzo floor applications.

Note: FP-CTR is compatible with 2 and 4-gang boxes only.

FloorPort Series Covers for 2 and 4-gang RFBA Floor Boxes

| FLOORPORT PART NUMBER CONFIGURATOR | | | | | | | |
|------------------------------------|----------------|----|-----------------------|----|--------|----|------------------|
| FP | B | | TC | | NK | | |
| FloorPort Cover | Blank Top | B | Tile (Flangeless) | T | Nickel | NK | Bronze |
| | Cutout Top | C | Tile/Carpet (Flanged) | TC | Brass | BS | Gray |
| | Furniture Feed | FF | | | Black | BK | Brushed Aluminum |
| | | | | | | | BZ |
| | | | | | | | GY |
| | | | | | | | AL |

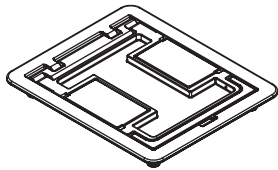
NOTE: Add "TR" to end of part number to indicate tamper-resistant cover. Not available with Furniture Feed cover.

FloorPort Series Flanged Cover Assemblies Ordering Information

FPCTCBK
FPCTCBZ
FPCTCBS
FPCTCNK
FPCTCAL
FPCTCGY

Cutout Cover Assembly -

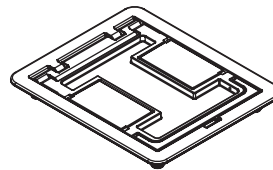
Flanged cover for use in tile or carpet installation. Die-cast aluminum assembly available in black (BK), bronze (BZ), brass (BS), nickel (NK), gray (GY), or brushed aluminum (AL). Insert in lid allows for carpet or tile cutouts to match finished floor.



FPCTCBKTR
FPCTCBZTR
FPCTCBSTR
FPCTCNKTR
FPCTCALTR
FPCTCGYTR

Cutout Tamper-Resistant Cover Assembly -

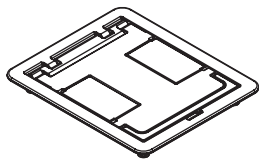
Flanged cover for use in tile or carpet installation. Features tamper-resistant screw to limit unauthorized personnel. Die-cast aluminum assembly available in black (BK), bronze (BZ), brass (BS), nickel (NK), gray (GY) or brushed aluminum (AL). Insert in lid allows for carpet or tile cutouts to match finished floor.



FPBTCBK
FPBTCBZ
FPBTCBS
FPBTCNK
FPBTCAL
FPBTCGY

Blank Cover Assembly -

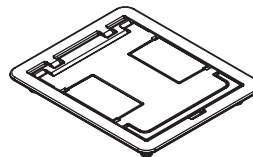
Flanged cover for use in tile or carpet installation. Die-cast aluminum assembly available in black (BK), bronze (BZ), brass (BS), nickel (NK), gray (GY), or brushed aluminum (AL). Lid area is flush with the finished floor, no cutouts provided.



FPBTCBKTR
FPBTCBZTR
FPBTCBSTR
FPBTCNKTR
FPBTCALTR
FPBTCGYTR

Blank Tamper-Resistant Cover Assembly -

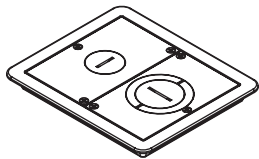
Flanged cover for use in tile or carpet installation. Features tamper-resistant screw to limit unauthorized personnel. Die-cast aluminum assembly available in black (BK), bronze (BZ), brass (BS), nickel (NK), gray (GY) or brushed aluminum (AL). Lid area is flush with the finished floor, no cutouts provided.



FPFFTCBK
FPFFTCBZ
FPFFTCBS
FPFFTCNK
FPFFTCAL
FPFFTCGY

Furniture Feed Cover Assembly -

Flanged cover for use in tile or carpet installation. Die-cast aluminum assembly available in black (BK), bronze (BZ), brass (BS), nickel (NK), gray (GY), or brushed aluminum (AL). Provided with one 1" trade size screw plug for power or communication type cabling and one combination 1 1/4" and 2" trade size screw plug for communication type cabling. Allows for feeding both power and communication cabling.



NOTE: Pricing varies depending on country of origin. Consult your local sales representative for more information.

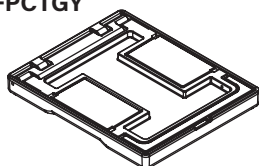
FloorPort Series Covers for 2 and 4-gang RFBA Floor Boxes

| FLOORPORT PART NUMBER CONFIGURATOR | | | | | | | | |
|------------------------------------|----------------|----|-----------------------|----|--------|----|------------------|----|
| FP | B | | TC | | NK | | | |
| FloorPort Cover | Blank Top | B | Tile (Flangeless) | T | Nickel | NK | Bronze | BZ |
| | Cutout Top | C | Tile/Carpet (Flanged) | TC | Brass | BS | Gray | GY |
| | Furniture Feed | FF | | | Black | BK | Brushed Aluminum | AL |

NOTE: Add "TR" to end of part number to indicate tamper-resistant cover. Not available with Furniture Feed cover.

FloorPort Series Flangeless Cover Assemblies Ordering Information

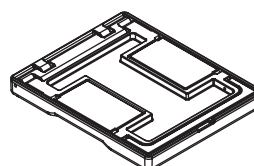
FPCTBK
FPCTBZ
FPCTBS
FPCTNK
FPCTAL
FPCTGY



Cutout Cover Assembly -

Flangeless cover for use in tile installations. Die-cast aluminum assembly available in black (BK), bronze (BZ), brass (BS), nickel (NK), gray (GY), or brushed aluminum (AL). Insert in lid allows for tile cutouts to match finished floor.

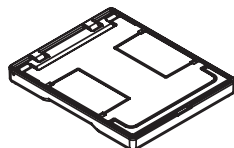
FPCTBKTR
FPCTBZTR
FPCTBSTTR
FPCTNKTR
FPCTALTR
FPCTGYTR



Cutout Tamper-Resistant Cover

Assembly - Flangeless cover for use in tile installations. Features tamper-resistant screw to limit unauthorized personnel. Die-cast aluminum assembly available in black (BK), bronze (BZ), brass (BS), nickel (NK), gray (GY) or brushed aluminum (AL). Insert in lid allows for tile cutouts to match finished floor.

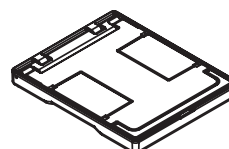
FPBTBK
FPBTBZ
FPBTBS
FPBTNK
FPBTAL
FPBTGY



Blank Cover Assembly -

Flangeless cover for use in tile installations. Die-cast aluminum assembly available in black (BK), bronze (BZ), brass (BS), nickel (NK), gray (GY), or brushed aluminum (AL). Lid area is flush with the finished floor, no cutouts provided.

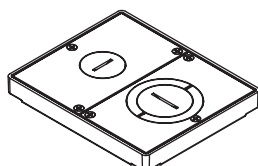
FPBTBKTR
FPBTBZTR
FPBTBSTTR
FPBTNKTR
FPBTALTR
FPBTGYTR



Blank Tamper-Resistant Cover

Assembly - Flangeless cover for use in tile installations. Features tamper-resistant screw to limit unauthorized personnel. Die-cast aluminum assembly available in black (BK), bronze (BZ), brass (BS), nickel (NK), gray (GY) or brushed aluminum (AL). Lid area is flush with the finished floor, no cutouts provided.

FPFFTBK
FPFFTBZ
FPFFTBBS
FPFFTNK
FPFFTAL
FPFFTGY



Furniture Feed Cover Assembly -

Flangeless cover for use in tile installations. Die-cast aluminum assembly available in black (BK), bronze (BZ), brass (BS), nickel (NK), gray (GY), or brushed aluminum (AL). Provided with one 1" trade size screw plug for power or communication type cabling and one combination 1 1/4" and 2" trade size screw plug for communication type cabling. Allows for feeding both power and communication cabling.

NOTE: Pricing varies depending on country of origin. Consult your local sales representative for more information.

North America Made FloorPort Series Covers for 2 and 4-gang RFBA Floor Boxes

| FLOORPORT PART NUMBER CONFIGURATOR | | | | | | | | | |
|------------------------------------|----------------|----|-----------------------|----|--------|----|------------------|----|--------------------|
| FP | B | | TC | | NK | | | NA | |
| FloorPort Cover | Blank Top | B | Tile (Flangeless) | T | Nickel | NK | Bronze | BZ | North America Made |
| | Cutout Top | C | Tile/Carpet (Flanged) | TC | Brass | BS | Gray | GY | NA |
| | Furniture Feed | FF | | | Black | BK | Brushed Aluminum | AL | |

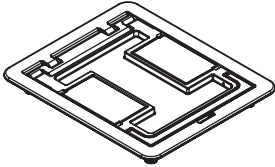
NOTE: Add "TR" to end of part number to indicate tamper-resistant cover. Not available with Furniture Feed cover.

North America Made FloorPort Series Flanged Cover Assemblies Ordering Information

FPCTCBK-NA
FPCTCBZ-NA
FPCTCBS-NA
FPCTCNK-NA
FPCTCGY-NA

Cutout Cover Assembly -

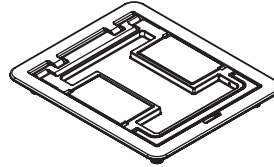
Flanged cover for use in tile or carpet installation. Die-cast aluminum assembly available in black (BK), bronze (BZ), brass (BS), nickel (NK) or gray (GY). Insert in lid allows for carpet or tile cutouts to match finished floor.



FPCTCBKTR-NA
FPCTCBZTR-NA
FPCTCBSTR-NA
FPCTCNKTR-NA
FPCTCALTR-NA
FPCTCGYTR-NA

Cutout Tamper-Resistant Cover Assembly -

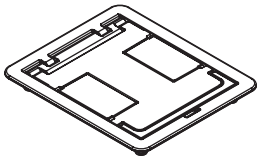
Flanged cover for use in tile or carpet installation. Features tamper-resistant screw to limit unauthorized personnel. Die-cast aluminum assembly available in black (BK), bronze (BZ), brass (BS), nickel (NK), gray (GY) or brushed aluminum (AL). Insert in lid allows for carpet or tile cutouts to match finished floor.



FPBTCBK-NA
FPBTCBZ-NA
FPBTCBS-NA
FPBTCNK-NA
FPBTCGY-NA

Blank Cover Assembly -

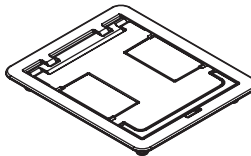
Flanged cover for use in tile or carpet installation. Die-cast aluminum assembly available in black (BK), bronze (BZ), brass (BS), nickel (NK) or gray (GY). Lid area is flush with the finished floor, no cutouts provided.



FPBTCBKTR-NA
FPBTCBZTR-NA
FPBTCBSTR-NA
FPBTCNKTR-NA
FPBTCALTR-NA
FPBTCGYTR-NA

Blank Tamper-Resistant Cover Assembly -

Flanged cover for use in tile or carpet installation. Features tamper-resistant screw to limit unauthorized personnel. Die-cast aluminum assembly available in black (BK), bronze (BZ), brass (BS), nickel (NK), gray (GY) or brushed aluminum (AL). Lid area is flush with the finished floor, no cutouts provided.



NOTE: Pricing varies depending on country of origin. Consult your local sales representative for more information.

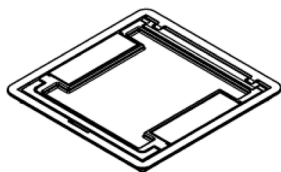
Large FloorPort Series Covers for 6 and 10-gang RFBA Floor Boxes

| FLOORPORT PART NUMBER CONFIGURATOR | | | | | | | |
|------------------------------------|------------|---|-----------------------|----|--------|----|------------------|
| FPL | B | | TC | | NK | | |
| Large FloorPort Cover | Blank Top | B | Tile/Carpet (Flanged) | TC | Nickel | NK | Bronze |
| | Cutout Top | C | | | Brass | BS | Gray |
| | | | | | Black | BK | Brushed Aluminum |
| | | | | | | | BZ |
| | | | | | | | GY |
| | | | | | | | AL |

Note: Add "TR" to end of part number to indicate tamper-resistant cover.

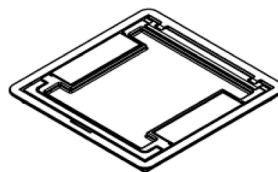
Large FloorPort Series Flanged Covers Ordering Information

FPLCTCBK
FPLCTCBZ
FPLCTCBS
FPLCTCNK
FPLCTCAL
FPLCTCGY



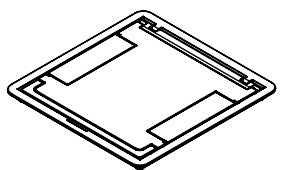
Large Cutout Cover Assembly -
Flanged cover for use in tile or carpet installation. Die-cast aluminum assembly available in black (BK), bronze (BZ), brass (BS), nickel (NK), gray (GY), or brushed aluminum (AL). Insert in lid allows for carpet or tile cutouts to match finished floor. For use with 6 and 10-gang RFBA floor boxes.

FPLCTCBKTR
FPLCTCBZTR
FPLCTCBSTR
FPLCTCNKTR
FPLCTCALTR
FPLCTCGYTR



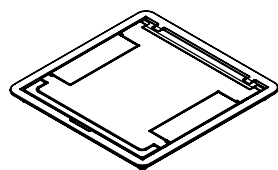
Large Tamper-Resistant Cutout Cover Assembly - Flanged tamper-resistant cover for use in tile or carpet installation. Die-cast aluminum assembly available in black (BK), bronze (BZ), brass (BS), nickel (NK), gray (GY), or brushed aluminum (AL). Insert in lid allows for carpet or tile cutouts to match finished floor. For use with 6 and 10-gang RFBA floor boxes.

FPLBTCBK
FPLBTCBZ
FPLBTCBS
FPLBTCNK
FPLBTCAL
FPLBTCGY



Large Blank Cover Assembly -
Flanged cover for use in tile or carpet installation. Die-cast aluminum assembly available in black (BK), bronze (BZ), brass (BS), nickel (NK), gray (GY), or brushed aluminum (AL). Lid area is flush with the finished floor, no cutouts provided. For use with 6 and 10-gang RFBA floor boxes.

FPLBTCBKTR
FPLBTCBZTR
FPLBTCBSTR
FPLBTCNKTR
FPLBTCALTR
FPLBTCGYTR



Large Tamper-Resistant Blank Cover Assembly - Flanged tamper-resistant cover for use in tile or carpet installation. Die-cast aluminum assembly available in black (BK), bronze (BZ), brass (BS), nickel (NK), gray (GY), or brushed aluminum (AL). Lid area is flush with the finished floor, no cutouts provided. For use with 6 and 10-gang RFBA floor boxes.

NOTE: All brand and product names referenced in this document are registered trademarks or trademarks of their respective holders.



Legrand, North America
60 Woodlawn Street
West Hartford, CT 06110
877-295-3472
www.legrand.us

Canada
844-977-3783
www.legrand.ca

