

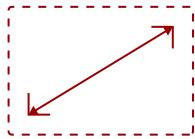
VX2478-SMHD - 24" 1440P THIN-BEZEL IPS MONITOR WITH HDMI AND DISPLAYPORT

Key Features

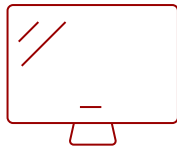
- Frameless Design
- SuperClear® IPS Panel Technology
- Wide Quad HD Resolution
- Versatile Connectivity
- Optimized View Settings



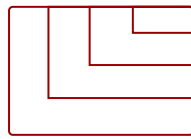
What's in the box.



24
DISPLAY



IPS
PANEL



2560 x 1440 @60Hz
RESOLUTION



*Power Cable varies by region



Product Description

Style and substance go hand-in-hand with the ViewSonic® VX2478-smhd 24" (23.8" viewable) WQHD monitor. SuperClear® IPS panel technology, wide viewing angles, and best-in-class screen performance deliver outstanding visual clarity perfect for office use, graphic design, and home entertainment. A premium ID includes a sleek edge-to-edge frameless screen, that when combined with vivid 2560x1440 resolution and dual speakers, deliver an immersive viewing experience for multimedia applications. Versatile HDMI, DisplayPort, and Mini DisplayPort inputs keep you connected to your favorite devices, while the modern, flush-mount frameless bezel design makes a standout statement in any home or office.

Specifications

More Information

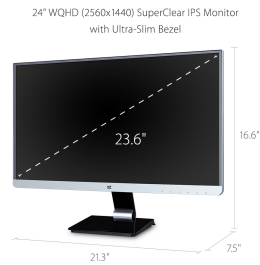
Screen Size

24

| | |
|------------------------------------|--|
| Viewable Area (in.) | 23.8 |
| Panel Type | IPS |
| Display Resolution | 2560 x 1440 |
| Display Resolution | WQHD (2560x1440) |
| Static Contrast Ratio | 1,000:1 |
| Dynamic Contrast Ratio | 80M:1 |
| Light Source | LED |
| Brightness | 300 cd/m2 |
| Colors | 16.7M |
| Aspect Ratio | 16:9 |
| Response Time (Typical GTG) | 14ms |
| Response Time (GTG w/OD) | 4ms |
| Viewing Angles | 178° horizontal, 178° vertical |
| Backlight Life (Hours) | 30,000 |
| Panel Surface | Anti-glare, hard-coating (3H) |
| PC Resolution (max) | 2560 x 1440 @60Hz |
| 3.5mm Audio Out | 1 |
| HDMI 1.4 In | 1 |
| DisplayPort | 1 |
| Mini DisplayPort | 1 |
| Internal Speakers | 2W (x2) |
| Eco Mode (Conserve) | 20W |
| Eco Mode (optimized) | 25W |
| Consumption (typical) | 29W |
| Consumption (max) | 35W |
| Voltage | AC 100-240V (universal), 50-60Hz |
| Stand-by | <0.5W |
| Cable Organization | No |
| Kensington Lock Slot | 1 |
| Physical Controls | GameMode, 1, 2, 3, 4, Power |
| On Screen Display | Auto Image Adjust, Contrast/Brightness, Input Select, Audio Adjust, Color Adjust, Information, Manual Image Adjust, Advanced Image Adjust, Setup Menu, Memory Recall (See user guide for complete OSD functionality) |
| Temperature | 32-104° F (0 - 40° C) |
| Humidity (non-condensing) | 20-90% |
| VESA Compatible | 100 x 100 mm |
| Frequency Horizontal | 15 ~ 120KHz |

| | |
|-------------------------------------|--|
| Frequency Vertical | 24 ~ 85Hz |
| Analog Sync | PCI-E, TMDS |
| Tilt (Forward/Back) | 6° / 15° |
| Net (lbs) | 7.7 |
| Net Without Stand (lbs) | 6.1 |
| Gross (lbs) | 11.4 |
| Net (kg) | 3.5 |
| Net Without Stand (kg) | 2.8 |
| Gross (kg) | 5.2 |
| Packaging (in.) | 23.8 x 16.3 x 5.1 |
| Physical (in.) | 21.3 x 16.6 x 7.5 |
| Physical Without Stand (in.) | 21.3 x 12.9 x 1.6 |
| Regulations | cULus, FCC-B, ICES003, NRCAN, UL-MX-CoC, Mexico Energy, CE, EEL, WEEE, EAC, CEC |
| PACKAGE CONTENTS | LCD Display, Power Cable, Mini DP to DisplayPort Cable, Quick Start Guide, ViewSonic Wizard CD-ROM |
| Recycle/Disposal | Please dispose of in accordance with local, state or federal laws. |
| Warranty | Three-year limited warranty on parts and labor |

UPC: 766907851212



Contact Sales
ViewSonic.com
 888.881.8781
 email:
salesinfo@viewsonic.com