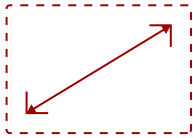


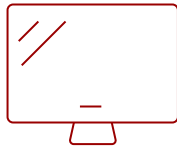
VP3456A - 34" COLORPRO™ 21:9 CURVED UWQHD MONITOR WITH 75HZ, FREESYNC, 100W USB C, RJ45 AND SRGB

Key Features

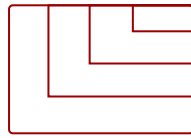
- Immersive Curved Screen Design
 - Professional Color Processing
 - Single-Cable USB-C Connectivity
 - Pantone Validated Display
 - Color Sensitivity Mode
-



34
DISPLAY



MVA
PANEL



3440 X 1440
RESOLUTION



Product Description

With an immersive curved screen and stunning WQHD+ 3440x1440 resolution, the ViewSonic VP3456a monitor elevates your viewing experience from flat to panoramic. Delivering incredible detail and vivid colors across wide viewing angles, this monitor is engineered to provide precise color accuracy. Thanks to an expansive 34" frameless screen, ultra-wide 21:9 aspect ratio, and integrated speakers, this monitor is ideal for video editing, content development, and other color-critical applications. With a sleek and modern design, the VP3456a features a future-proof USB Type-C port with 100W charging, as well as DisplayPort technology, and HDMI. Enjoy reliable network connectivity with the integrated Ethernet port while the integrated USB hub also provides single-cable simplicity for connecting and charging your peripherals and accessories. The VP3456a provides an amazing Delta E<2 value and 99%* sRGB color accuracy for incredible and precise color accuracy. An integrated color uniformity function ensures consistent chromaticity across the screen, while a 14-bit 3D look-up table generates a stunningly smooth palette of 4.39 trillion colors, making it an ideal set-up for photographers, creatives, and designers.

Specifications

	More Information
UPC	766907019209
Screen Size	34
Viewable Area (in.)	34
Panel Type	MVA
Display Resolution	3440 x 1440

Display Resolution	UWQHD (3440x1440)
Static Contrast Ratio	4,000:1
Dynamic Contrast Ratio	20,000,000:1
Light Source	LED
Brightness	400 cd/m2
Colors	16.7M
Color Space Support	8 bits
Aspect Ratio	21:9
Response Time (Typical GTG)	5ms
Viewing Angles	178° horizontal, 178° vertical
Backlight Life (Hours)	30,000
Panel Surface	Anti-Glare type, Hard-coating (3H), Haze 25%
Curvature	1800R
Refresh Rate	75Hz
PC Resolution (max)	3440 X 1440
Mac® Resolution (max)	3440 X 1440
USB Type A	2
USB Type B	1
USB Type C	1
Ethernet LAN (RJ45)	1
HDMI 2.0 In	2
DisplayPort	1
Internal Speakers	3W (x2)
Eco Mode (Conserve)	157W
Eco Mode (optimized)	163W
Consumption (typical)	172W
Consumption (max)	177W
Voltage	AC 100-240V (universal), 50-60Hz
Stand-by	0.3W
Power Supply	Internal
Cable Organization	No
Kensington Lock Slot	1
Physical Controls	Key 1, Key 2, Key 3, Key 4, Key 5, Key 6 (power)
On Screen Display	Input Select, Audio Adjust, ViewMode, Color Adjust, Manual Image Adjust, Setup Menu
Temperature	32-104° F (0 - 40° C)
Humidity (non-condensing)	20-90%

VESA Compatible	100 x 100 mm
Frequency Horizontal	15~150 KHz
Frequency Vertical	24~75 Hz
Height Adjust	130 mm / 5.1 in
Swivel	120°
Tilt (Forward/Back)	6° / 21°
Net (lbs)	24.7
Net Without Stand (lbs)	16.3
Gross (lbs)	38.0
Net (kg)	11.2
Net Without Stand (kg)	7.4
Gross (kg)	17.2
Packaging (in.)	38.0 x 20.7 x 14.6
Physical (in.)	31.9 x 18.81~21.23 x 9.6
Physical Without Stand (in.)	31.9 x 14.4 x 4.1
Packaging (mm)	965.0 x 525.0 x 370.0
Physical (mm)	809.0 x 480.46~539.23 x 243.0
Physical Without Stand (mm)	809.0 x 366.0 x 105.0
Regulations	cTUVus, FCC-B, ICES003, Energy Star 8.0, EPEAT Silver, CEC, NOM, Mexico Energy
Package Contents	VP3456a Display, Power Cable, HDMI Cable, USB Type-C Cable, USB A/B Cable, Quick Start Guide
Recycle/Disposal	Please dispose of in accordance with local, state or federal laws.
Warranty	Three-year limited warranty on parts, labor and backlight

UPC: 766907019209



Contact Sales
ViewSonic.com

888.881.8781
 email:
salesinfo@viewsonic.com