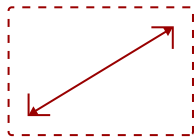




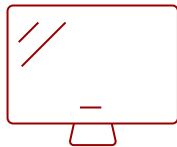
VP2456A - 24" COLORPRO™ 1080P IPS MONITOR WITH 90W USB-C, SRGB, AND PANTONE VALIDATED

## Key Features

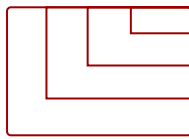
---



24  
DISPLAY



IPS  
PANEL



1920x1080  
RESOLUTION



## Product Description

---

Engineered to deliver unmatched color accuracy crucial for professional applications, the ViewSonic® VP2456A 24" (23.8" viewable) Full HD monitor displays your work with the vivid and lifelike color it deserves. With a SuperClear® IPS panel and a sleek 3-sided frameless design, the VP2456A provides a near-seamless viewing experience ideal for multi-monitor setups. The VP2456A is equipped with USB-C for single cable connectivity to deliver video, audio, and 90W of power delivery. To ensure precise, uniform color, each of our monitors is factory calibrated to deliver an amazing Delta E <2, so you can be confident what you see on screen is what your clients and customers will see as well.

## Specifications

---

---

[More Information](#)

<b>UPC</b>	766907031782
<b>Screen Size</b>	24
<b>Viewable Area (in.)</b>	23.8
<b>Panel Type</b>	IPS
<b>Display Resolution</b>	1920 x 1080
<b>Display Resolution</b>	Full HD (1920x1080)
<b>Static Contrast Ratio</b>	1,500:1
<b>Dynamic Contrast Ratio</b>	20M:1
<b>Light Source</b>	LED
<b>Brightness</b>	250 cd/m2
<b>Aspect Ratio</b>	16:9
<b>Response Time (Typical GTG)</b>	5ms
<b>Viewing Angles</b>	178º horizontal, 178º vertical
<b>Backlight Life (Hours)</b>	30,000
<b>Panel Surface</b>	Anti-Glare type, Hard-coating (3H), Haze 25%
<b>Refresh Rate</b>	120Hz
<b>PC Resolution (max)</b>	1920x1080
<b>Mac® Resolution (max)</b>	1920x1080
<b>USB Type A</b>	3
<b>USB Type C</b>	90W x 1, 15W x 1
<b>HDMI 1.4 In</b>	1
<b>DisplayPort</b>	1
<b>Internal Speakers</b>	2W (x2)
<b>Eco Mode (Conserve)</b>	56.8
<b>Eco Mode (optimized)</b>	58.1
<b>Consumption (typical)</b>	59.8
<b>Consumption (max)</b>	70.4
<b>Voltage</b>	100-240 VAC
<b>Stand-by</b>	0.5
<b>Power Supply</b>	Internal
<b>Cable Organization</b>	No
<b>Kensington Lock Slot</b>	1
<b>Physical Controls</b>	Key 1, Key 2, Key 3, Key 4, Key 5, Key 6 (power)
<b>On Screen Display</b>	Input Select, Audio Adjust, ViewMode, Color Adjust, Manual Image Adjust, Setup Menu
<b>Temperature</b>	32-104º F (0 - 40º C)
<b>Humidity (non-condensing)</b>	20-90%

<b>VESA Compatible</b>	100 x 100 mm
<b>Height Adjust</b>	130 mm / 5.1 in
<b>Swivel</b>	120°
<b>Pivot (Right/Left)</b>	90° / 90°
<b>Tilt (Forward/Back)</b>	5° / 21°
<b>Regulations</b>	cTUVus, FCC-B, ICES003, EnergyStar 8.0, EPEAT Silver, NOM, Mexico Energy
<b>Net (lbs)</b>	14.2
<b>Net Without Stand (lbs)</b>	8.8
<b>Gross (lbs)</b>	20.1
<b>Net (kg)</b>	6.5
<b>Net Without Stand (kg)</b>	4
<b>Gross (kg)</b>	9.1
<b>Packaging (in.)</b>	24.4" x 15.4" x 9"
<b>Physical (in.)</b>	21.23" x 15.29"-20.41" x 8.46"
<b>Physical Without Stand (in.)</b>	21.23" x 12.61" x 2.09"
<b>Packaging (mm)</b>	620 x 392 x 228
<b>Physical (mm)</b>	539.2 x 388.46-518.46 x 214.96
<b>Physical Without Stand (mm)</b>	539.2 x 320.2 x 53.2
<b>Package Contents</b>	VP2456A x1, 3-pin Plug (IEC C13 / CEE22) x1, HDMI Cable (v1.4; Male-Male) x1, USB Type-C Gen2 Cable (Male-Male) x1, USB Type-C to Type-A 3.2 Gen1 Cable (Male-Male) x1, Quick Start Guide x1,
<b>Recycle/Disposal</b>	Please dispose of in accordance with local, state or federal laws.
<b>Warranty</b>	Three-year limited warranty on parts, labor and backlight

UPC: 766907031782



## Contact Sales

[ViewSonic.com](https://www.viewsonic.com)

888.881.8781

email:

[salesinfo@viewsonic.com](mailto:salesinfo@viewsonic.com)