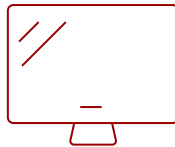
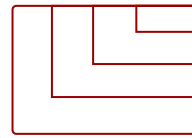


VB-BOW-001

Key Features

- Over-the-whiteboard floor support
- For BalanceBox® 400 installations on studed walls and non-supporting walls
- Load capacity: 225 kg / 495 lbs

**DISPLAY****PANEL****RESOLUTION**

Product Description

Designed to work with the BalanceBox 400-series of wall mounts. This floormount offers an easy way to install your BalanceBox mounts without having to take down your existing whiteboard. (Balancebox p/n: 481A61001)

Specifications

More Information

Backlight Compensation

No

Wireless Connectivity

N/A

Packaging (in.)

47.5 x 9.9 x 3.8

Physical (in.)

92.9 x 26.0 x 11.0

Net (lbs)

50.7


Gross (lbs)

52.9



Contact Sales

ViewSonic.com

888.881.8781 

email: salesinfo@viewsonic.com 