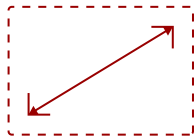


## PS502W - 4000 LUMENS WXGA SHORT THROW PROJECTOR WITH DUAL HDMI, USB-A

### Key Features

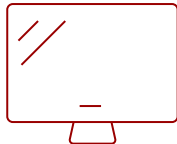
---

- Bright Images in Any Environment
- Short Throw Lens
- Experience Images up to 300"
- Versatile Connectivity
- Software Updates via USB

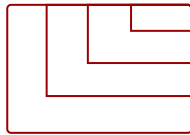


60 - 300 in. / 1.5 - 7.6 m

**DISPLAY**



**PANEL**



VGA(640 x 480) to FullHD(1920 x 1080)

**RESOLUTION**



**WXGA (1280x800p) RESOLUTION**

### Product Description

---

Light up classrooms and conference rooms alike with the ViewSonic® PS502W WXGA short throw projector.

Featuring 4,000 ANSI lumens of stunning brightness, this powerful business and education projector creates crystal clear images up to 300". And with a 0.52 short throw ratio, this projector is capable of displaying shadow-free 100" images from just a few feet away.

The PS502W projector also comes with multiple connectivity options for greater convenience. Dual HDMI ports empower users to connect multiple devices directly to the projector. Once connected, the projector can conveniently switch between different input sources at the press of a button. A USB-A port provides power to wireless HDMI dongles for a more convenient streaming experience. Rather than taking your projector to the service center, software updates can be performed easily over a simple USB cable.

With the PS502W projector, you can let your presentations shine with stunning clarity.

# Specifications

---

	More Information
<b>UPC</b>	766907020038
<b>Light Source</b>	DLP Lamp
<b>Display Resolution</b>	WXGA (1280x800)
<b>Display Resolution</b>	1280 x 800
<b>Brightness (Lumens)</b>	4,000 ANSI
<b>Screen Size</b>	60 - 300 in. / 1.5 - 7.6 m
<b>Throw Distance</b>	0.75m-3.76m (77" @ 0.96m)
<b>Throw Ratio</b>	0.52
<b>Keystone</b>	Vertical (+/- 19°)
<b>Lens</b>	Fixed Zoom
<b>Light Source Life, Normal (hours)</b>	4000
<b>Light Source Life, Dynamic Eco-Mode (hours)</b>	12000
<b>Color Depth</b>	1.07 Billion Colors
<b>Dynamic Contrast Ratio</b>	15,000:1
<b>Aspect Ratio</b>	16:10
<b>Input Lag</b>	37ms
<b>Frequency Horizontal</b>	15K-102 KHz
<b>Frequency Vertical</b>	23-120 Hz
<b>PC Resolution (max)</b>	VGA(640 x 480) to FullHD(1920 x 1080)
<b>Mac® Resolution (max)</b>	480i, 480p, 576i, 576p, 720p, 1080i, 1080p
<b>USB 2.0 Type A</b>	1
<b>3.5mm Audio Out</b>	1
<b>3.5mm Audio In</b>	1
<b>Control (RS232)</b>	1
<b>HDMI 1.4 (with HDCP 1.4)</b>	2
<b>VGA In</b>	1
<b>VGA Out</b>	1
<b>Internal Speakers</b>	16W (x1)
<b>Voltage</b>	100-240V +/- 10%, 50/60Hz AC
<b>Consumption (typical)</b>	295W
<b>Stand-by</b>	<0.5W
<b>Physical Controls</b>	Keypad, Power key

**On Screen Display**

Display, Image, Power Management, Basic, Advanced, System, Information (See user guide for full OSD functionality)

**Temperature**

32-104° F (0 - 40° C)

**Kensington Lock Slot**

1

**Net (lbs)**

6.3 lbs

**Gross (lbs)**

9 lbs

**Net (kg)**

2.87 kg

**Gross (kg)**

4.08 kg

**Packaging (in.)**

15.7 in x 13.3 in x 6.6 in

**Physical (in.)**

12.2 in x 9.2 in x 4.5 in

**Packaging (mm)**

400 mm x 337 mm x 168 mm

**Physical (mm)**

309 mm x 234 mm x 115 mm

**Regulations**

cTUVus

**Package Contents**

Projector, power cable, remote control, Quick Start Guide,

**Warranty**

Three-year limited warranty on parts and labor, 1st year free Express Exchange® service. (One year Express Exchange Service requires product registration).

**Recycle/Disposal**

Please dispose of in accordance with local, state or federal laws.

UPC: 766907020038



**Contact Sales**  
[ViewSonic.com](http://ViewSonic.com)  
 888.881.8781  
 email:  
[salesinfo@viewsonic.com](mailto:salesinfo@viewsonic.com)