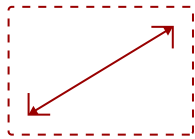


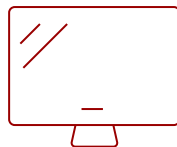
LS740HD - 5,000 ANSI LUMENS 1080P LASER INSTALLATION PROJECTOR

Key Features

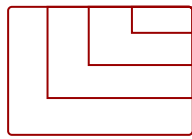
- Long-lasting Laser Phosphor Light Source
- Bright Images in Large Spaces
- 300" Screen
- Reduced Weight and Size
- Convenient Mounting Flexibility
- Eco-Friendly
- Non-stop 24/7 Operation
- High Native Contrast Ratio
- USB-A Power Supply



30 - 300 in. / 0.76 - 7.62 m
DISPLAY



PANEL



VGA(640 x 480) to WUXGA RB(1920 x 1200)
RESOLUTION



Product Description

With the ViewSonic® LS740HD laser projector, you can light up every room with brilliant presentations and razor-sharp resolution. Featuring the latest laser phosphor technology, the LS740HD projector delivers 5,000 ANSI lumens of brightness to ensure crisp images even in rooms with ambient lighting. Enjoy a maintenance-free projection experience without having to deal with complicated lamp replacements. This eco-friendly projection solution features a compact design for easier transportation. Experience screen sizes up to 300" in 1080p Full HD resolution for show-stopping images designed to fill up boardrooms, lecture halls, auditoriums and other public spaces. The LS740HD laser projector comes loaded with features like 1.3x optical zoom, H/V keystone, 4 corner adjustment, 360° projection and portrait mode for easy setup and versatile applications.

Specifications

UPC	766907022605
Light Source	DLP Laser
Display Resolution	Full HD (1920x1080)
Display Resolution	1920 x 1080
Brightness (Lumens)	5,000 ANSI
Screen Size	30 - 300 in. / 0.76 - 7.62 m
Throw Distance	1-8m (100"@2.50m)
Throw Ratio	1.13~1.47
Keystone	Vertical (+/- 19°) / Horizontal (+/- 19°)
Lens	1.3x optical zoom
Light Source Life, Normal (hours)	20000
Light Source Life, Dynamic Eco-Mode (hours)	30000
Color Depth	1.07 Billion Colors
Dynamic Contrast Ratio	3,000,000:1
Aspect Ratio	16:9
Input Lag	37ms
Frequency Horizontal	15K-102KHz
Frequency Vertical	24-120Hz
PC Resolution (max)	VGA(640 x 480) to WUXGA RB(1920 x 1200)
Mac® Resolution (max)	480i, 480p, 576i, 576p, 720p, 1080i, 1080p
USB 2.0 Type A	1
3.5mm Audio Out	1
Control (RS232)	1
HDMI 1.4 (with HDCP 1.4)	2
Internal Speakers	15W (x1)
Voltage	100-240V+/- 10%, 50/60Hz AC
Consumption (typical)	210W
Stand-by	Standby: <0.5W
Physical Controls	Keypad, Power key
On Screen Display	Display, Image, Power Management, Basic, Advanced, System, Information (See user guide for full OSD functionality)
Temperature	32-104° F (0 - 40° C)
Kensington Lock Slot	1
Net (lbs)	6.6lbs
Gross (lbs)	10.4lbs
Net (kg)	3.00kg

Gross (kg)	4.70kg
Packaging (in.)	15.7x11x6.1in
Physical (in.)	11.3x8.5x5in
Packaging (mm)	400x280x155mm
Physical (mm)	286x216x129mm
Regulations	cTUVus
Package Contents	Projector, power cable, remote control, Quick Start Guide
Warranty	Three-year limited warranty on parts and labor, 1st year free Express Exchange® service. (One year Express Exchange Service requires product registration).
Recycle/Disposal	Please dispose of in accordance with local, state or federal laws.

UPC: 766907022605



Contact Sales

ViewSonic.com

888.881.8781

email:

salesinfo@viewsonic.com