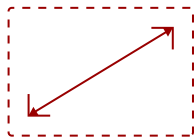


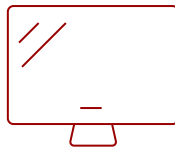
IFP8652-1C-E4 - 86" VIEWBOARD® INTERACTIVE DISPLAY BUNDLE

Key Features

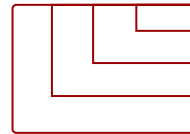
- **ULTRA HD RESOLUTION:** 86 Inch 4K Ultra HD (3840x2160p) Display
- **ADVANCED TOUCH:** 33-point Multi-touch lets users write or draw on the panel with their fingers and styluses
- **MEANINGFUL COLLABORATION:** Incredible capabilities for conference rooms, classrooms, and hybrid environments
- **FLEXIBLE CONNECTIVITY:** Powerful quad-core processor and versatile connectivity options (HDMI,VGA, RJ45, and USB-C ports)
- **INTEGRATED SOFTWARE:** The myViewBoard suite includes Whiteboard, ViewBoard Cast, and more for better engagement
- **EVERYTHING TO GET STARTED:** This bundle includes the interactive display, wireless AC adapter and slim mobile cart
- **REMOTE MANAGEMENT:** Schedule updates and monitor device status with the built-in myViewBoard® Manager software
- **PEACE OF MIND:** Industry-leading 3-year standard warranty with optional extensions and robust support services



86
DISPLAY



PANEL



RESOLUTION

Product Description

Ideal for education environments, this all-in-one ViewBoard Bundle includes a 86" ViewBoard IFP8652-1C 4K interactive display, a VB-WIFI-001 WiFi and Bluetooth adapter, and a VB-STND-005 slim mobile cart.

Specifications

More Information


Display Type	LCD
Screen Size	86
Viewable Area (in.)	86
Light Source	LED

Display Resolution	3840 x 2160
Aspect Ratio	16:9
Static Contrast Ratio	1,200:1
Brightness	350 cd/m2
Response Time (Typical GTG)	8ms
Viewing Angles	178° horizontal, 178° vertical
Panel Surface	Anti-glare 7H tempered glass
Ethernet LAN	(10/100/1000M) (USB Type-C 10/100, Android & PC 10/100/1000)
Wifi	Optional VB-WIFI-001 adapter, 802.11AX + Bluetooth 5.2
OS	ViewBoard OS based on Android 9.0
GPU	ARM Mali-G52
CPU	ARM Quad Core A73
CPU Processor Speed	1.8GHz
Memory	4GB
Storage	32GB
Internal Speakers	15W (x2)
Subwoofer	15W (x1)
HDMI 2.0 In	4
HDMI Out	1
VGA	1
DisplayPort	1
3.5mm Audio In	1
3.5mm Audio Out	1
SPDIF	1
USB 3.0	3
USB 2.0	2
USB 2.0 Type B	3
USB 3.1 Type C	1
Slot-in PC Slot	1
RS232	1
Ethernet LAN (RJ45)	2
WIFI Module Slot	1
Intel® OPS Slot In (80-pin)	1
Voltage	100-240 VAC
Consumption (typical)	286.4W
Stand-by	<0.5W

Physical Controls	OSD / Remote Control / Annotation overlay
On Screen Display	Input, Volume, Backlight, Audio, Screen, Display, Adjust
Temperature	32-104° F (0 - 40° C)
Humidity (non-condensing)	10-90%
Touch Technology	Infrared
Touch Points	Windows: 33, Android: 20
Tip Detection	Dual tips, 2.5mm and 9mm
Net (lbs)	151.35
Gross (lbs)	179.46
Net (kg)	68.65
Gross (kg)	81.40
Packaging (in.)	83.1 x 52.4 x 11
Physical (in.)	77 x 47.7 x 4.7
Packaging (mm)	2112 x 1332 x 280
Physical (mm)	1957 x 1211 x 120
VESA Compatible	600 x 400 mm
Warranty	3-year limited warranty on parts, labor and backlight, onsite warranty
Recycle/Disposal	Please dispose of in accordance with local, state or federal laws.
Package Contents	IFP8652-1C display, power cord, Remote control with AAA battery, Touch USB cable, Touch pen x 2, Quick Start Guide + Compliance statement, RS232 adapter, Clamp x 5, Camera Plate, Screw x 8, HDMI cable, Type-C cable, Eraser
Regulations	cTUVus, FCC, ENERGY STAR 7.0, Mexico Energy, CE, CB, RoHS, ErP, WEEE

Contact Sales

ViewSonic.com

888.881.8781 

email: salesinfo@viewsonic.com 