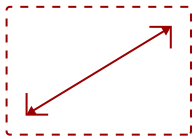


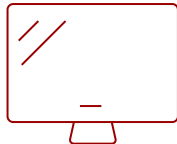
IFP75G1 - 65" VIEWBOARD INTERACTIVE DISPLAY

Key Features

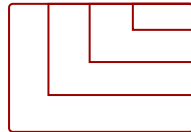
- Enjoy greater customizability by adding your own external PC or OPS module
- Upgrade your future-proof display by switching out your computing solution
- Lack of pre-installed software enhances cybersecurity
- Multi-point touch recognition seamlessly accommodates multiple users
- Seamless integration with existing classroom technology



75
DISPLAY



PANEL



RESOLUTION



Product Description

Take hands-on learning to the next level with the ViewSonic® ViewBoard® IFP75G1 interactive display. By combining simplicity with an intuitive design, IFPG1 interactive displays give administrators the flexibility to do more with their budget while giving educators the freedom to accomplish more in the classroom. This stunning 75" interactive display is a versatile, future-proof whiteboarding solution that integrates seamlessly with a classroom's existing hardware. Whether your school uses Windows or Android, educators can run their display with their computing solution of choice. When it's time to upgrade, simply swap out the external PC or OPS device for an easy, hassle-free way to bring your interactive display into the next generation. Use your IFPG1 interactive display with the VPC25-W53-01-1B or Google EDLA-certified VPC-A31-01 slot-in PC to build the ultimate classroom. Because IFPG1 devices come without any pre-installed software programs, schools can enjoy a greater standard of security as well as fewer vulnerabilities and points of penetration. A 4K Ultra HD resolution display and multi-point touch recognition empower multiple students to annotate the interactive display simultaneously. And with our state-of-the-art WriteAway™ technology, educators or students can pick up the stylus and start writing instantly without waiting through an extended setup process. Each IFPG1 interactive display comes backed by an industry-leading warranty and support from our award-winning customer service team.

Specifications

	More Information
UPC	766907024678
CPU	MTK3683
Internal Speakers	10W (x2)
HDMI 2.0 In	3
VGA	1
3.5mm Audio In	1
3.5mm Audio Out	1
USB 3.0	2
USB 2.0	6
USB Type C	65W x 1
RS232	1
Ethernet LAN (RJ45)	1
Intel® OPS Slot In (80-pin)	1
Voltage	100-240 VAC
Consumption (typical)	110.9W
Stand-by	<0.5W
Physical Controls	Power, Home, Touch, VOL-, VOL+, Brightness +/-
Temperature	32-104° F (0 - 40° C)
Humidity (non-condensing)	20-80%
Touch Technology	Infrared
Touch Points	Windows: 40, Android: 20
Tip Detection	2mm/8mm
Other	Object Recognition
Latency	5ms
Net (lbs)	109.35
Gross (lbs)	137.35
Net (kg)	49.6
Gross (kg)	62.3
Packaging (in.)	73.3 x 44.9 x 8.9
Physical (in.)	67.2 x 40.2 x 3.4
Packaging (mm)	1863 x 1140 x 225
Physical (mm)	1708 x 1020 x 85.7
VESA Compatible	800 x 400 mm

Screw Size	M8
Warranty	3-year limited warranty on parts, labor and backlight, onsite warranty
Recycle/Disposal	Please dispose of in accordance with local, state or federal laws.
Package Contents	3m power cable, HDMI 2.0 cable 3m x 1, Remote control with AAA battery (Opt.), 3m USB 2.0 touch cable x 1, Touch pen (Passive pen) x 2 (VB-PEN-002), Quick Start Guide + Compliance statement, RS232 adapter, Screw (wall mount 4), Camera Plate
Regulations	US NRTL w/ CA,FCC/ICES003, DOE Energy Star,DOE EPEAT
Ethernet LAN	2 Ethernet Sharing (10/100/1000M) (USB Type-C 10/100, OPS 10/100/1000)
Display Type	LCD
Screen Size	75
Viewable Area (in.)	74.5
Light Source	DLED
Display Resolution	3840 x 2160
Refresh Rate	60Hz
Aspect Ratio	16:9
Static Contrast Ratio	1,200:1
Dynamic Contrast Ratio	5,000:1
Backlight Life (Hours)	50,000
Brightness	400
Response Time (Typical GTG)	8ms
Viewing Angles	178° horizontal, 178° vertical
Panel Surface	Anti-glare 9H tempered glass

UPC: 766907024678



Contact Sales

ViewSonic.com

888.881.8781

email:

salesinfo@viewsonic.com