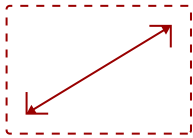


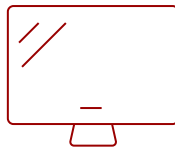
IFP6550-E2

Key Features

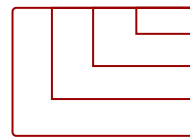
- All-in-One Solution
- ViewBoard Interactive Flat Panel
- Faster WiFi
- Mobile Trolley Cart



65
DISPLAY



PANEL



RESOLUTION

Product Description

Ideal for education environments, this all-in-one ViewBoard Bundle includes a 65" ViewBoard IFP6550 4K interactive flat panel, a wireless AC adapter, and a VB-STND-001 mobile trolley cart.

Specifications

More Information


Display Size (in.)	65
Viewable Area (in.)	65
Light Source	LED
Resolution	3840 x 2160
Refresh Rate (Hz)	60
Aspect Ratio	16:9

Static Contrast Ratio	1,200:1
Backlight Life (Hours)	50,000
Brightness	350 cd/m2
Response Time (Typical GTG)	8ms
Viewing Angles	178° horizontal, 178° vertical
Panel Surface	9H
Operation Rating	16/7
Ethernet LAN	10/100/1000 Mbps
OS	ViewBoard OS (embedded Android 8)
GPU	ARM Mali450 MP4
CPU	ARM Quad Core A73 + A53
CPU Processor Speed	A73: 1.1GHz, A53: 1.5GHz
Memory	2GB
Storage	16GB
Built-in Software	myViewBoard, Chromium browser, Zoom, ViewBoard Cast
Internal Speakers	10W (x2)
Subwoofer	15W (x1)
HDMI 2.0 In	3
VGA	1
DisplayPort	1
Composite RCA	1
3.5mm Audio In	1
3.5mm Audio Out	1
SPDIF Audio Out	1
USB 3.0	4
USB 2.0	3
Slot-in PC Slot	1
USB B Touch Port	2
RS232	1
Ethernet LAN (RJ45)	1
WIFI Module Slot	1
Voltage	100-240 VAC
Consumption (max)	350W
Consumption (typical)	104W
Stand-by	<0.5W
On Screen Display	Input, Volume, Backlight, Audio, Screen, Display, Adjust

Remote Control	Volume, Channel, Source, Mute, Back, Input, Menu
Temperature	32-104° F (0 - 40° C)
Humidity (non-condensing)	10-90%
Touch Technology	Infrared
Touch Points	20-Point Touch
Net (lbs)	199.7
Gross (lbs)	248.5
Net (kg)	86.6
Gross (kg)	102.7
Packaging (in.)	66.8 x 42.2 x 12.6
Physical (in.)	59.9 x 36.3 x 29.5
Packaging (mm)	1697.0 x 1071.0 x 320.0
Physical (mm)	1521.0 x 992.0 x 749.0
VESA Compatible	600 x 400 mm
Warranty	3-year limited warranty on parts, labor and backlight, onsite warranty
Recycle/Disposal	Please dispose of in accordance with local, state or federal laws.
PACKAGE CONTENTS	IFP6550 Display, LB-WIFI-001, VB-STND-001, stylus pen x 2, power cable, remote control with batteries, ViewSonic Wizard CD (User Guide), Quick Start Guide, USB cable, camera bracket, HDMI cable, power cords
Regulations	cTUVus, FCC, ENERGY STAR 7.0, Mexico Energy, CE, CB, RoHS, ErP, WEEE

Contact Sales

ViewSonic.com

888.881.8781 

email: salesinfo@viewsonic.com 