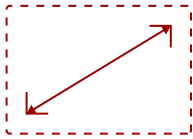


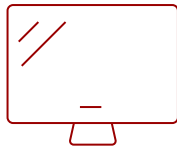
IFP5550-E1

Key Features

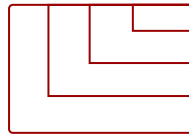
- All-in-One Solution
- ViewBoard Interactive Flat Panel
- Faster WiFi
- Fixed Wall Mount



55
DISPLAY



PANEL



RESOLUTION



Product Description

Ideal for education environments, this all-in-one ViewBoard® Bundle includes a 55" ViewBoard IFP5550 4K interactive flat panel, a wireless AC adapter, and a WMK-047-2 wall mount.

Specifications

More Information

Display Size (in.)	55
Viewable Area (in.)	55
Light Source	LED

Resolution	3840 x 2160
Refresh Rate (Hz)	60
Aspect Ratio	16:9
Static Contrast Ratio	1,200:1
Dynamic Contrast Ratio	5,000:1
Backlight Life (Hours)	50,000
Brightness	350 cd/m2
Response Time (Typical GTG)	8ms
Viewing Angles	178° horizontal, 178° vertical
Panel Surface	9H
Operation Rating	16/7
Ethernet LAN	10/100/1000 Mbps
OS	ViewBoard OS (embedded Android 8)
GPU	ARM Mali450 MP4
CPU	ARM Quad Core A73 + A53
CPU Processor Speed	A73: 1.1GHz, A53: 1.5GHz
Memory	2GB
Storage	16GB
Built-in Software	myViewBoard, Chromium browser, Zoom, ViewBoard Cast
Internal Speakers	10W (x2)
Subwoofer	15W (x1)
HDMI 2.0 In	3
VGA	1
DisplayPort	1
Composite RCA	1
3.5mm Audio In	1
3.5mm Audio Out	1
SPDIF Audio Out	1
USB 3.0	4
USB 2.0	3
Slot-in PC Slot	1
USB B Touch Port	2
RS232	1
Ethernet LAN (RJ45)	1
WIFI Module Slot	1
Voltage	100-240 VAC

Consumption (max)	350W
Consumption (typical)	81W
Stand-by	<0.5W
On Screen Display	Input, Volume, Backlight, Audio, Screen, Display, Adjust
Remote Control	Volume, Channel, Source, Mute, Back, Input, Menu
Touch Technology	Infrared
Touch Points	20-Point Touch
Tip Detection	Dual tips, 3mm and 8mm
Net (lbs)	85.9
Gross (lbs)	88.2
Net (kg)	38.9
Gross (kg)	49.1
Packaging (in.)	57.4 x 36.7 x 11.3
Physical (in.)	51.3 x 31.5 x 5.6
Packaging (mm)	1458.0 x 932.0 x 285.0
Physical (mm)	1304.0 x 800.0 x 143.0
VESA Compatible	400 x 400 mm
Warranty	3-year limited warranty on parts, labor and backlight, onsite warranty
Recycle/Disposal	Please dispose of in accordance with local, state or federal laws.
PACKAGE CONTENTS	IFP5550 Display, LB-WIFI-001, WMK-047-2, stylus pen x 2, power cable, remote control with batteries, ViewSonic Wizard CD (User Guide), Quick Start Guide, USB cable, camera bracket, HDMI cable, power cords
Regulations	cTUVus, FCC, Mexico Energy, CE, CB, RoHS, ErP, WEEE



Contact Sales
ViewSonic.com
 888.881.8781
 email:
salesinfo@viewsonic.com