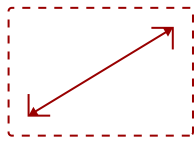


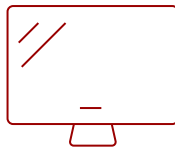
CDE7520-W1 - 75" DISPLAY, 3840 X 2160 RESOLUTION, 450 CD/M2 BRIGHTNESS, 24/7

Key Features

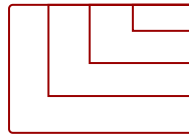
- Ultra HD Resolution
- Powerful Embedded SOC Platform
- All-in-One Solution
- VIEWBOARD® CAST CONTENT SHARING SOFTWARE
- Remote Content Sharing from Anywhere
- myViewBoard Manager



75
DISPLAY



IPS-Type
PANEL



RESOLUTION



Product Description

The ViewSonic® CDE7520-W is a 75" premium 4K large format presentation display. With features including a razor-sharp resolution of 3840 x 2160, 450-nit high brightness, 178-degree ultra-wide viewing angles, 2 x 16W speakers, and wireless screen sharing, the CDE7520-W transforms meeting rooms into a dynamic communications hub. The built-in ViewBoard® screen sharing software*, ViewBoard® Cast (along with the optional ViewSonic® vCastSender app) and myViewBoard Display software, enables both on-site and online users to participate in conferences and simultaneously share content. Equipped with twin dual-core processors, 3GB RAM, and 16GB of internal memory, the CDE7520-W can play multimedia from internal storage or a USB flash drive 24 hours a day, seven days a week. And with remote configuration and content management system support, the ViewSonic® CDE7520-W is also suitable for a wide array of diverse signage applications. Bundle includes display and USB Wi-Fi adapter. *Chrome, Android, Windows, Mac OS, and iOS compliant


Specifications

Display Type	LCD
Screen Size	75
Viewable Area (in.)	75
Orientation	Landscape
Colors	1.07B
Color Space Support	8 bit+FRC
Light Source	DLED
Resolution	3840 x 2160
Panel Type	IPS-Type
Aspect Ratio	16:9
Static Contrast Ratio	1,200:1
Backlight Life (Hours)	50,000
Brightness	450 cd/m2
Response Time (Typical GTG)	8ms
Viewing Angles	178° horizontal, 178° vertical
Panel Surface	Hard Coat - Anti-Glare, 3% Haze, 2H with anti-glare treatment
Operation Rating	24/7
OS	Android 8.0
Media Player Type	Media Player
GPU	G51MP2
CPU	Dual CPU - Cortex A73 + A5
CPU Processor Speed	Quad-core, 1.4GHz
Memory	3GB DDR4
Storage	16GB eMMC
Internal Speakers	16W (x2)
HDMI 2.0 (with HDCP 2.2)	2
DVI-D	1
VGA	1
DisplayPort	1
RCA Audio Out	1
3.5mm Audio In	1
SPDIF Audio Out	1
SPDIF	1
USB 3.0	1
USB 2.0	2
OPS PC Slot	1

RS232	1
Ethernet LAN (RJ45)	1
IR in	1
IR out	1
WIFI Module Slot	1
Intel® OPS Slot In (80-pin)	1
Voltage	100-240 VAC +/- 10% Wide Range, 50-60Hz +/-3 Hz
Consumption (max)	300W
Consumption (typical)	240W
Stand-by	<0.5W
Temperature	32-104° F (0 - 40° C)
Humidity (non-condensing)	20-80%
Net (lbs)	64.6
Gross (lbs)	91.9
Net (kg)	29.3
Gross (kg)	41.7
Packaging (in.)	72.0 x 43.2 x 8.7
Physical (in.)	65.8 x 37.6 x 2.8
Packaging (mm)	1828.0 x 1098.0 x 220.0
Physical (mm)	1672.0 x 955.0 x 70.0
VESA Compatible	400 x 200 mm
Screw Size	M8
AV Control	AMX Certified, Crestron Certified (Version 1.0), Extron Certified
Warranty	Three-year limited warranty on parts, labor and backlight
Recycle/Disposal	Please dispose of in accordance with local, state or federal laws.
PACKAGE CONTENTS	CDE7520-W, Remote control with batteries, Quick Start Guide, Power cable, HDMI Cable, Wall Mount Screws and RS232 cable
Regulations	cULus, FCC, Energy Star, RoHS



Contact Sales
ViewSonic.com

888.881.8781 
 email:
salesinfo@viewsonic.com