

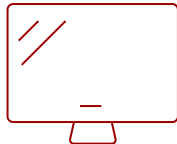
LDS135-153 - 135" ALL-IN-ONE LED DISPLAY SOLUTION KIT

Key Features

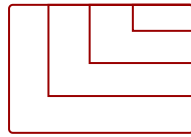
- Pre-assembled kit ready for instant use
- Built-in stand with motorized height adjustment
- Easy to move around with 360° silent wheels
- Simple delivery with movable flight case
- Impressive large display for rental at any event/exhibition



135
DISPLAY



PANEL



1920x1080
RESOLUTION



Product Description

The ViewSonic® LDS135-153 is an all-in-one digital signage solution kit that includes a 135" Direct View LED Display, mobile cart, and flight case. Along with its immense screen size, the included display delivers stunning visuals with Full HD resolution, 1.5mm fine pixel pitch, 450-nit high brightness, 3,840Hz ultra-fast refresh rate, and 120% Rec.709 wide color gamut. Because the display modules come pre-assembled and already mounted on the included cart, the solution can be setup and used within a few minutes. The cart features 360° wheels, enabling the installed display to be freely moved from room to room. The display and cart can be easily folded and stored in the included flight case, enabling the entire kit to be freely moved from location to location for different events and exhibitions. Plus, a Glue-on-Board (GOB) LED surface treatment delivers an IP54 rating for enhanced protection from collisions, dust and moisture. With easy setup and mobile versatility, the ViewSonic LDS135-153 can engage audiences everywhere including high-end board rooms, reception areas, auditoriums, and other large venues.

Specifications

	More Information
UPC	766907028560
OS	Android 9.0
GPU	Mult-core MaliG51 MP2
CPU	MTK9669
Memory	4GB DDR4
Storage	64GB (56GB available)
Internal Speakers	20W (x2)
PC Resolution (max)	1920x1080
Mac® Resolution (max)	1920x1080
HDMI 1.4 In	2
HDMI 2.0 In	3
HDMI 2.1 In	1
HDMI 2.0 Out	2
3.5mm Audio Out	1
USB 2.0	3
USB Type C	1 (Video input, and Power 5V/2A)
RS232	1
RJ45 Input (Internet)	1
IR in	1
WIFI Module Slot	1
Intel® OPS Slot In (80-pin)	1
Voltage	100-120V+/- 10%, 50/60Hz, 20A
Consumption (max)	2000W
Consumption (typical)	900W
Stand-by	<0.5W
On Screen Display	Yes
Remote Control	Yes
Temperature	32-104° F (0 - 40° C)
Humidity (non-condensing)	20-80%
Net (lbs)	548.95
Gross (lbs)	939.0
Net (kg)	249.0
Gross (kg)	426.0

Packaging (in.)	74.8 x 80.8 x 31.5
Physical (in.)	70.9 x 79.6 x 29.9 (min.), 118.5 x 105.9 x 29.9 (max.)
Packaging (mm)	1900.0 x 2052.0 x 800.0
Physical (mm)	1800.0 x 2023.0 x 760.0 (min.), 3010.0 x 2690.0 x 760.0 (max.)
Warranty	3-year limited warranty on parts and labor, on-site service
Recycle/Disposal	Please dispose of in accordance with local, state or federal laws.
Package Contents	Power Cord, Remote Control, QSG, Maintenance Tool (LD-MK-001) x 1, LAN Cable (16ft; Cat 5A) x 1, IR Extender Cable x 1
Regulations	cTUVus, FCC, RoHS
Wifi	2.4G/5G Hz
Display Type	Direct View LED
Screen Size	135
Viewable Area (in.)	135
Light Source	Fine Pixel Pitch LED
LED Pitch Size (mm)	1.56
LED Grayscale	14 bits
Display Resolution	1920 x 1080
Refresh Rate	3,840Hz
Aspect Ratio	16:9
Static Contrast Ratio	6,000:1
Backlight Life (Hours)	100,000
Brightness	450 cd/m2
Viewing Angles	170° horizontal, 170° vertical
Operation Rating	24/7

UPC: 766907028560



Contact Sales
ViewSonic.com

888.881.8781
 email:
salesinfo@viewsonic.com