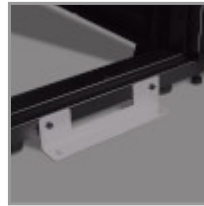
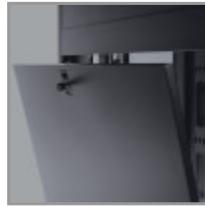


SmartRack Premium 42U Server Rack Enclosure, Secure, Standard-Depth

MODEL NUMBER: **SR42UB**



Heavy-duty, locking, 42U Premium Rack Enclosure Cabinet that accommodates all standard 19-inch rackmount equipment and ships fully assembled for quick and easy deployment in secure, high-density server and IT networking environments.

Features

- Ships fully assembled for rapid deployment and rolls into place on heavy-duty pre-installed casters (casters are removable)
- Front and rear sets of equipment mounting rails adjust in 1/4" increments. Adjustment is quick and convenient. The easy-view depth index ensures consistent rail placement without requiring time-consuming measurements.
- Toolless accessory mounting rails (2 rails per enclosure) include slots for quick installation of compatible PDUs and vertical cable managers. Mounting slots are arranged in an industry-standard pattern compatible with a wide variety of accessories. Each rail can accommodate two vertical PDUs or cable managers side-by-side (four items per enclosure).
- Enclosure includes mounting hardware of 50 pieces of M6 cage nuts and 50 pieces of M6 screws
- Tough textured powder coat finish resists conditions found in non-IT environments such as warehouses
- Massive front-to-rear ventilation capacity. 65+% open space in door perforation pattern meets or exceeds server manufacturer requirements
- Maximum usable internal depth of 37 inches/94 cm (front to rear rail)
- Weight ratings of 3000 lbs (1360.8 kgs) stationary and 2250 lbs (1020.6 kgs) rolling
- Front door is locking, reversible and removable
- Rear doors are locking and reversible. Split rear door design reduces clearance requirements for service entry allowing the enclosure to be placed closer to a wall
- Locking removable side panels are 'half size' to make them smaller and lighter improving ease of

Highlights

- Standard 24" (600mm) width and 42" (1050mm) depth for optimal use of floor space
- Ships fully assembled
- 3000 lbs (1360.8 kgs) stationary / 2250 lbs (1020.6 kgs) rolling load capacity
- Locking, removable, reversible front and rear doors
- Locking, removable side panels keyed alike with doors
- Pre-installed casters and leveling feet; Rolls through standard 7-ft. (2.13 m) doorway
- Meets all enclosure requirements towards PCI DSS (Payment Card Industry Data Security Standard) Compliance

Package Includes

- SR42UB Rack Enclosure
- (4) side panels
- (4) side panel locks
- (2) door & side panel keys
- (50) M6 screws
- (50) M6 washers
- (50) M6 cage nuts
- Owner's Manual



installation and servicing. Two side panels per side (4 panels total). Side panels are keyed alike to the front and rear doors.

- Built in latching tabs allow enclosures to be combined securely in rows. Center-to-center width can be set at 600mm or 24" to match standard data center floor tiles
- Leveling feet extend to allow enclosure to be positioned on uneven floors. Levelers are removable
- Compact design allows the enclosure to roll through standard height commercial doorways
- Convenient grounding system. All components are grounded to the enclosure frame which includes multiple connections for facility ground. Front and rear doors include quick-release ground wires.
- Open bottom for cable access
- Top panel has generous cable access holes. Panel can be removed toollessly in seconds without having to disconnect cables first
- Included stabilizing brackets are used for shipment and can be reattached at the bottom of the enclosure frame on the inside or outside of the rack
- Meets all enclosure requirements towards PCI DSS (Payment Card Industry Data Security Standard) Compliance
- Compatible with airflow optimization and cable management accessories

Specifications

OVERVIEW	
UPC Code	037332123770
Device Compatibility	Patch Panel; Network Switch; UPS; Server
Rack Type	Enclosure
PHYSICAL	
Color	Black
Factory Preset Rack Depth (in.)	27.75
Factory Preset Rack Depth (cm)	70.5
Factory Preset Rack Depth (mm)	705
Maximum Device Depth (cm)	93.98
Maximum Device Depth (in.)	37
Maximum Device Depth (mm)	940
Minimum Device Depth (cm)	10.16
Minimum Device Depth (in.)	4
Minimum Device Depth (mm)	102
Rack Height	42U
Shipping Dimensions (hwd / cm)	215.90 x 115.57 x 66.04



Tripp Lite
1111 W. 35th Street
Chicago, IL 60609 USA
Telephone: 773.869.1234
www.tripplite.com

Shipping Dimensions (hwd / in.)	85.00 x 45.50 x 26.00
Shipping Weight (kg)	152.41
Shipping Weight (lbs.)	336.00
Unit Dimensions (hwd / cm)	199.39 x 60.02 x 109.22
Unit Dimensions (hwd / in.)	78.5 x 23.63 x 43
Unit Weight (kg)	127.46
Unit Weight (lbs.)	281
Weight Capacity - Rolling (kg)	1,021
Weight Capacity - Rolling (lbs.)	2250
Weight Capacity - Stationary (kg)	1,361
Weight Capacity - Stationary (lbs.)	3000
Rack Depth	Standard
Number of Vertical Mounting Rails	4
SPECIAL FEATURES	
Grounding Lug	Front and back door frames
Built-in Cable Management	Yes
Extra Wide	No
STANDARDS & COMPLIANCE	
Certifications	UL60950; RoHS; CE; IP20 Protection Rating
Approvals	EIA/ECA-310-E
WARRANTY	
Product Warranty Period (Worldwide)	5-year limited warranty

© 2021 Tripp Lite. All rights reserved. All product and company names are trademarks or registered trademarks of their respective holders. Use of them does not imply any affiliation with or endorsement by them. Tripp Lite has a policy of continuous improvement. Specifications are subject to change without notice. Tripp Lite uses primary and third-party agencies to test its products for compliance with standards. See a list of Tripp Lite's testing agencies:

<https://www.tripplite.com/products/product-certification-agencies>