

## F-1000BTWP

### SPEAKER SYSTEM



The F-1000 Series Speaker are compact two-way speaker systems designed for high efficiency, wide range, and high power input handling capability. These speaker systems can be installed in a manner ideal for the location and intended application. The F-1000BTWP features a water-proof design (splash-proof type meeting IPX4 standard), so that it can be permanently installed outdoors.

### Key features

- Up to 90 W continuous program (F-1000B / F-1000W)
- Dispersion angle of 90° x 90°
- 2-way speaker with high quality 10 cm woofer and balanced dome tweeter
- Paintable
- Covered rear-mounted terminal block
- Weatherproof

## Specifications

Enclosure	Bass-reflex type
Rated Input	15 W
Rated Impedance	100 V line: 670 $\Omega$ (15 W), 2 k $\Omega$ (5 W), 3.3 k $\Omega$ (3 W), 10 k $\Omega$ (1W) 70 V line: 330 $\Omega$ (15 W), 670 $\Omega$ (7.5 W), 2 k $\Omega$ (2.5 W), 3.3 k $\Omega$ (1.5 W), 10 k $\Omega$ (0.5W)
Sensitivity	87 dB (1 W, 1 m) at installation in 1/2 free sound field
Frequency Response	85 - 20,000 Hz, -10 dB at installation in 1/2 free sound field
Crossover Frequency	5 kHz
Directivity Angle	Horizontal: 90°, Vertical: 90°
Speaker Component	Low frequency: 10 cm (4) cone-type High frequency: Balanced dome tweeter
Input Terminal	Push-in terminal
Water Protection	IPX4
Operating Temperature	-10# to +50# (14# to 122#)
Finish	Enclosure: HIPS, black Punched net: Surface-treated steel plate, black, anticorrosive paint Joint bracket, wall bracket: Stainless steel (SUS304), t1.5 Speaker bracket: Die-cast aluminum, black, paint
Dimensions	130 (W) x 202 (H) x 131 (D) mm (5.12 x 7.95" x 5.16")
Weight	2 kg (4.41 lb) (including the supplied brackets)
Included Accessories	Speaker bracket ...1, Joint bracket ...1, Wall bracket ...1, Bracket fixing screw ...1 set, Terminal cover ...1, Terminal cover mounting screw ...4
Optional Accessories	Speaker mount bracket: YS-60B

Note: Bolts and nuts for mounting the bracket to the wall or ceiling are not included. Prepare them separately.

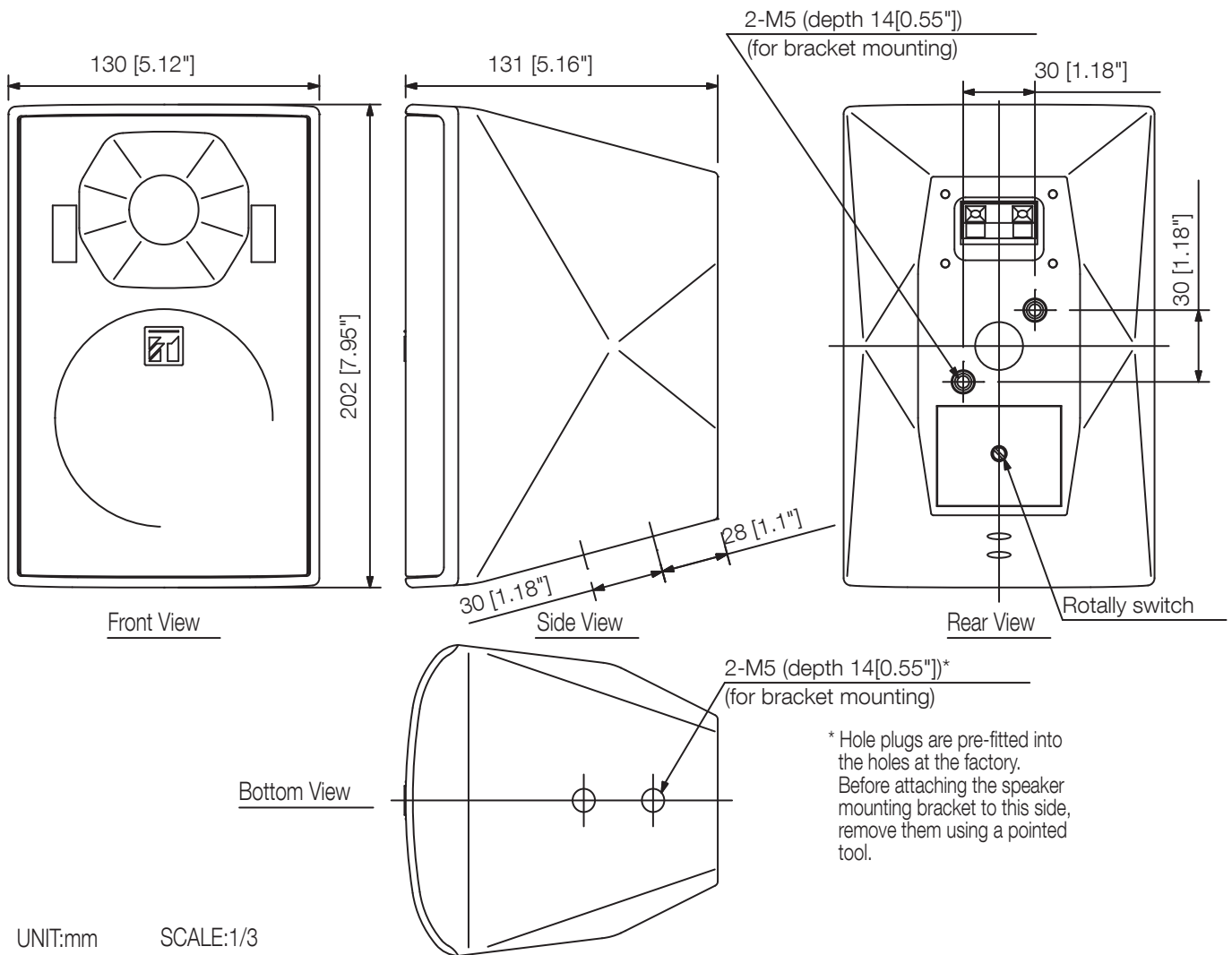
Avoid installing the speaker in locations close to the seashore or in indoor swimming facilities that are not well ventilated.

In such locations the bracket may be vulnerable to corrosion, eventually allowing the speaker to fall resulting in personal injury.

# Caution on installation

Do not install the F-1000BTWP at places where it is likely to be corroded such as bath room, indoor pools, or seaside.

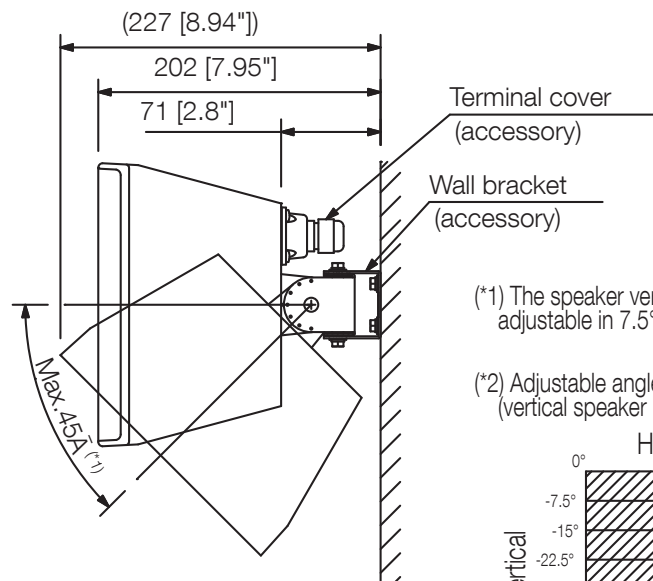
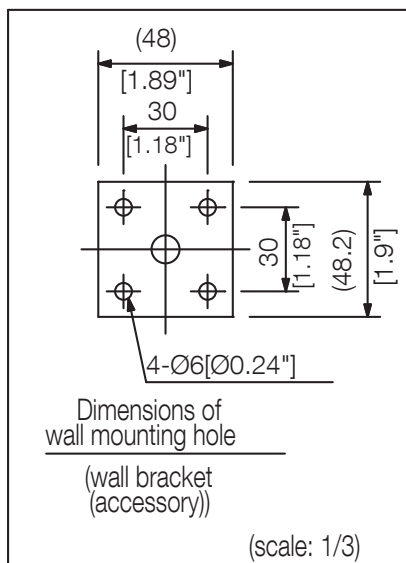
## Dimensions



UNIT:mm

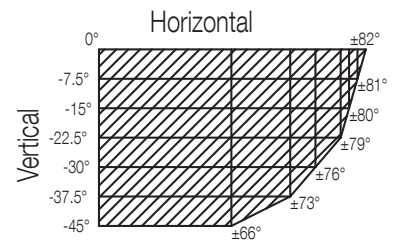
SCALE:1/3

## Dimensions



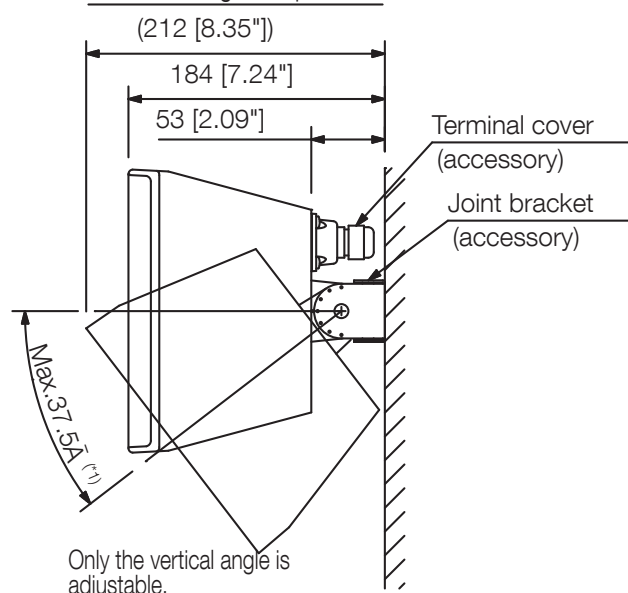
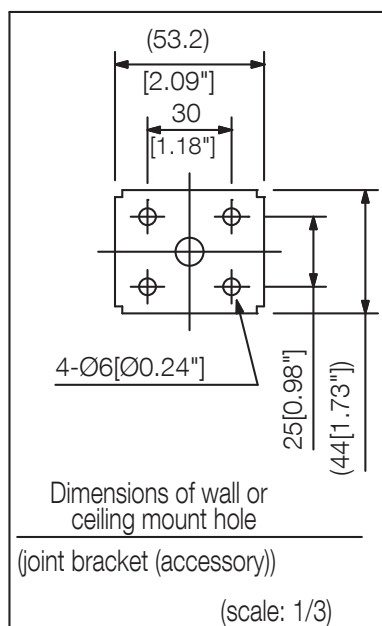
(\*1) The speaker vertical angle adjustable in  $7.5^\circ$  steps.

(\*2) Adjustable angle (vertical speaker mounting)



Up to  $82^\circ$  left or right is adjustable in a horizontal direction. (\*2)

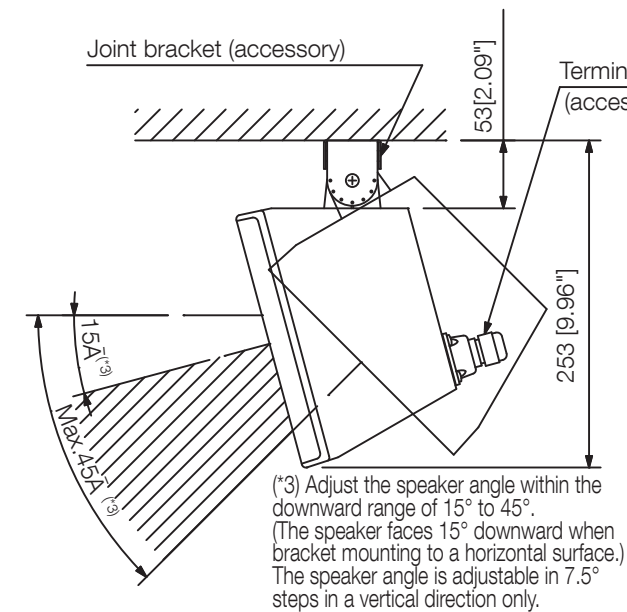
Wall mounting example



Only the vertical angle is adjustable.

Mounting the speaker close to a wall surface

## Dimensions

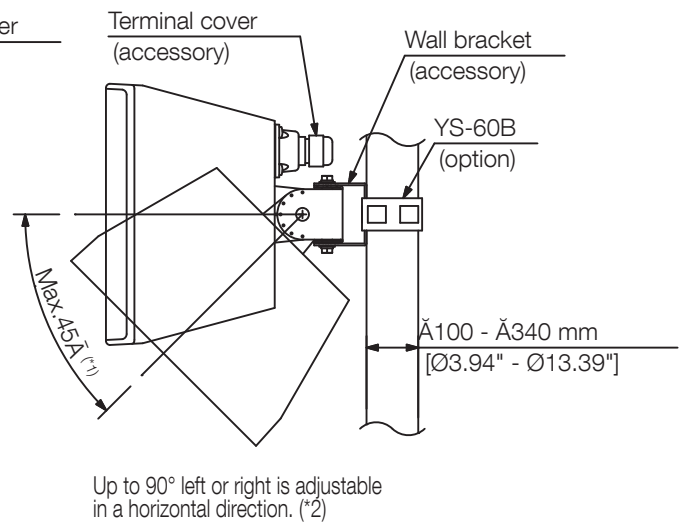


Ceiling mount example

(Only the vertical speaker mounting is allowed.)

UNIT:mm

SCALE:1/6



Pole mounting example

(Only the vertical speaker mounting is allowed.)

## A&E specifications

The speaker shall be a two-way bass reflex enclosure suitable for ceiling or wall mounting. The low frequency component shall be a 10 cm (4") cone-type woofer. The high frequency component shall be a balanced dome tweeter. For clear, wide-area sound coverage, the speaker shall 90° (H) x 90° (V) wide dispersion-angle high frequency horn.

The rated input shall be 15 W. The speaker shall include a transformer having multiple taps (1 W, 3 W, 5 W, 15 W at 100 V and 0.5 W, 1.5 W, 2.5 W, 7.5 W, 15 W at 70 V) adjustable via the rear of the enclosure. The sensitivity at a distance of 1m with a 1 W input level applied shall be 87 dB. The speaker shall have a frequency response of 85 – 20kHz.

The speaker enclosure shall be constructed of HIPS resin. The speaker shall have a IEC 529 splash-proof rating of IPX4. The speaker shall have an operating temperature of -10° C to +50° C (14° F to 122° F). The speaker shall be available in white or black, and also be repaintable. The grille shall be a punched net, surface-treated steel plate with anticorrosive paint. Brackets for speaker-stand, wall and ceiling installation shall be included.

There shall be also optionally available brackets for more demanding installations.

The unit shall be compact and lightweight with dimensions of 130 x 202 x 131 mm (5.12" x 7.95" x 5.16") and a weight of 2 kg ( 4.41 lbs.).

The speaker shall be a TOA model F-1000BTWP/F-1000WTWP.

The pole mount brackets shall be the YS-60B.