

QUICK START GUIDE

Dishwasher Cycle and Washing Options

CYCLE	Available Washing Options					
	Zone Wash	Power Wash	Hi Temp	Sanitize	Heated Dry	Fan Dry
Auto	NA	NA	✓	✓	✓	✓
Heavy Duty	✓	✓	✓	✓	✓	✓
Normal	✓	✓	✓	✓	✓	✓
Light	✓	✓	✓	✓	✓	NA
Express Wash	✓	✓	✓	✓	✓	✓
Rinse Only	NA	NA	NA	NA	NA	NA

Washing Options

1. Delay – Touch and hold **Delay** until desired delay time is displayed.
2. Wash Zone – Not available for Auto and Rinse Only cycles.
3. Power Wash – Place heavily soiled dishes facedown in lower rack directly above the Power Wash arm in the back left corner of the dishwasher.
4. Fan Dry – Extends drying time for improved drying performance.
5. High Temp Wash – Maintains 140°F (60°C) water temperature.
6. Heat dry – Operates heater during the drying process.
7. Sanitize - Maintains 158°F (70°C) water temperature.

Operations and Displays

1. POWER – Touch and hold **Power** for 3 seconds to turn on/off the dishwasher.
2. START/CANCEL – Select desired wash cycle, touch **START/CANCEL** and close the door within 4 seconds to start wash cycle.
3. Display Window – Displays the remaining hours and minutes of the running cycle, delay hours, error codes, etc.
4. Wi-Fi Indicator Light – Indicates successful network connection.
5. Rinse Aid Indicator Light – Indicates low Rinse Aid level.
6. Sanitized Indicator Light – Indicates Sanitized function is complete.
7. Child Lock Indicator Light – Indicates Child Lock is enabled. Touch and hold **Light** and **Express Wash** together for 3 seconds to disable or enable Child Lock.

SHARP

SHARP ELECTRONICS CORPORATION • 100 Paragon Drive • Montvale, New Jersey 07645 • USA

QUICK START GUIDE

DISHWASHER MODEL: SDW6767HS

WI-FI SPECIFICATIONS

Wireless LAN: IEEE802.11b/g/n

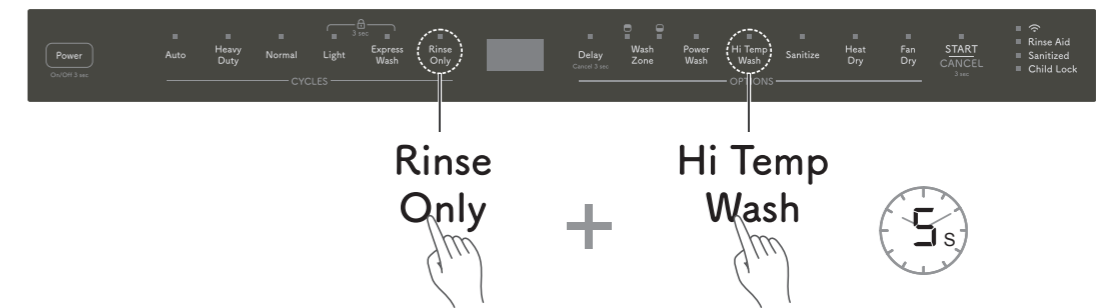
Frequency range: 2.4GHz frequency band

There are three different ways to connect your dishwasher to Amazon Alexa. First, download the Amazon Alexa app, then connect your Dishwasher to Wi-Fi using one of three methods: With a Barcode, Without a Barcode and Zero Touch Setup. Next, you need to enable Remote Command & Control.

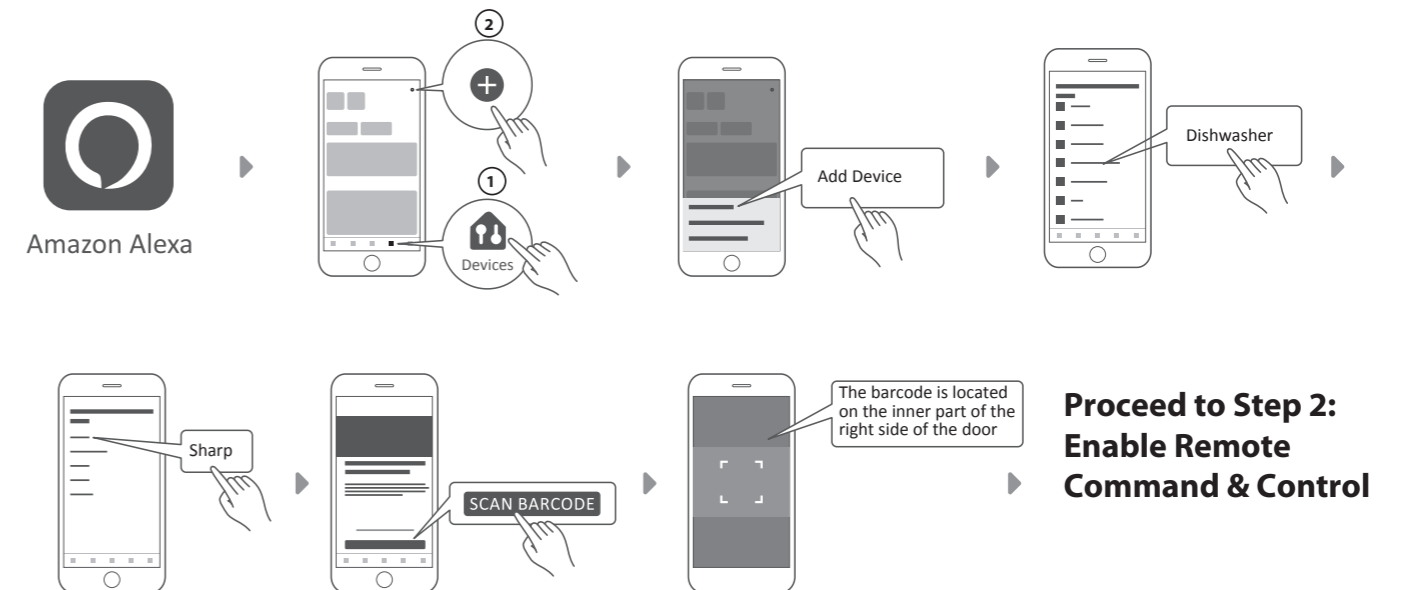
Step 1: Wi-Fi Connection

Option 1: With a Barcode

- 1 Touch **Power** to turn on the dishwasher, then touch and hold **Rinse Only** and **Hi Temp Wash** together for 5 seconds until "FR" appears on the display.



- 2 Open the Amazon Alexa app, select **Devices** and touch + to add a device. Select the type of device and follow instructions to scan the barcode located on the right side of the inner part of the door.

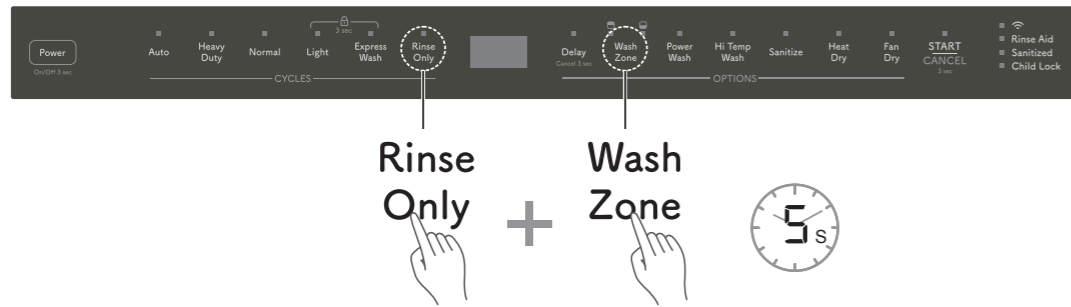


**Proceed to Step 2:
Enable Remote
Command & Control**

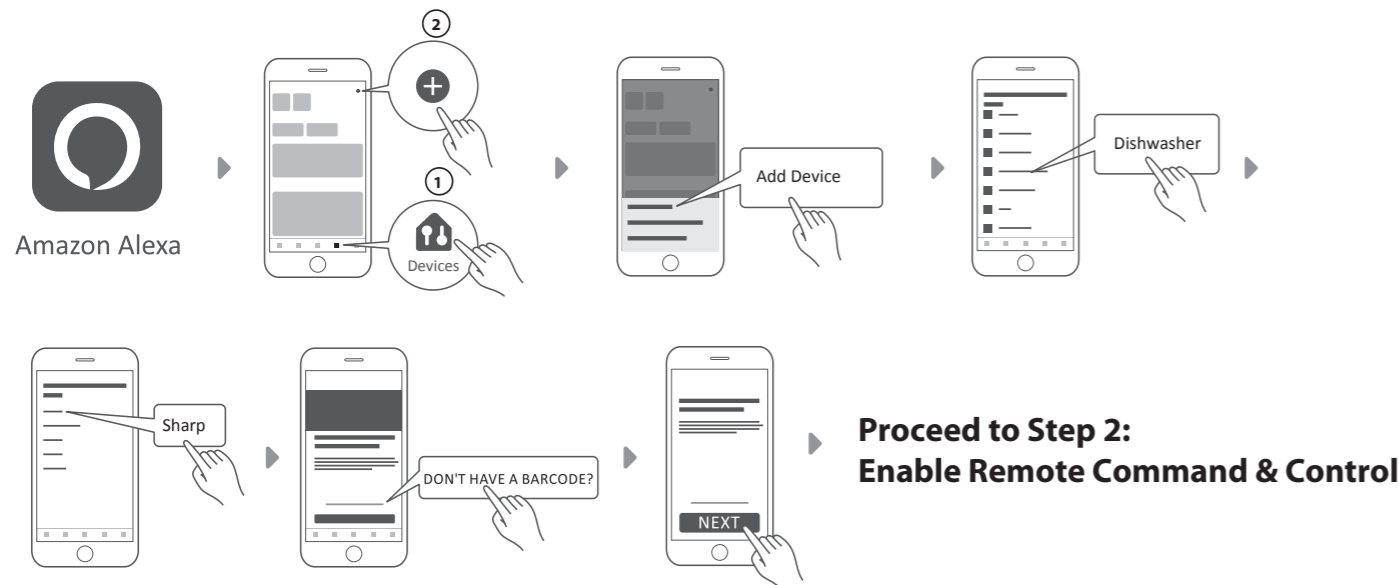
QUICK START GUIDE

Option 2: Without a Barcode

- 1 Touch **Power** to turn on the dishwasher, then touch and hold **Rinse Only** and **Wash Zone** together for 5 seconds until "UG" appears on the display.



- 2 Open the Amazon Alexa app, select **Devices** and touch + to add a device. Select the type of device, then select **DON'T HAVE A BARCODE?** and touch **NEXT**.

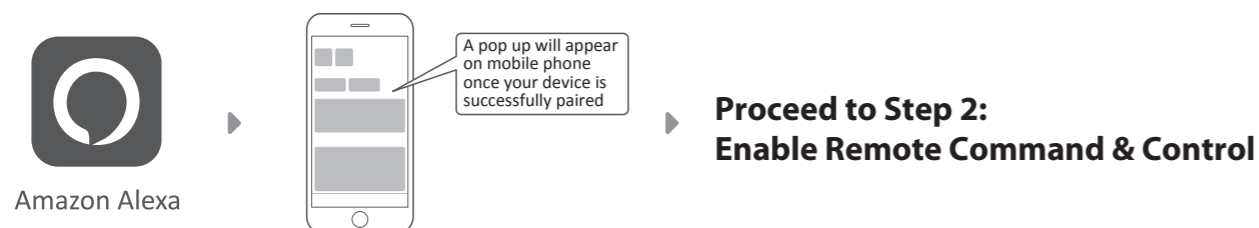


Option 3: Zero Touch Setup

Zero Touch Setup is only available if your dishwasher was purchased through Amazon.com and Zero Touch Setup was applied to your personal Amazon account during checkout.

Touch **Power** to turn on the dishwasher. Open the Amazon Alexa app, and it will automatically pair to your Dishwasher.

An active Echo Dot (2nd Gen or later) can also perform Zero Touch Setup.

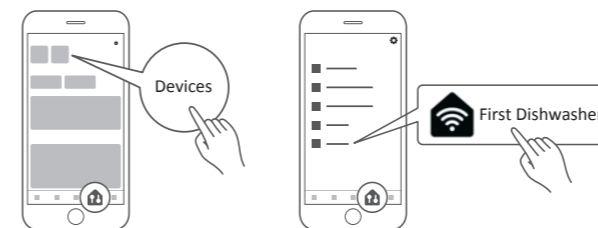
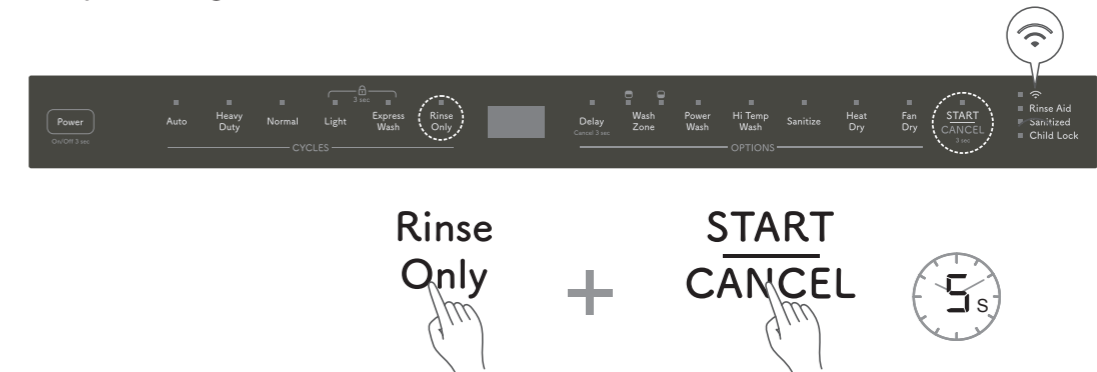


QUICK START GUIDE

Step 2: Enable Remote Command & Control

With the Dishwasher connected to Wi-Fi and paired to the mobile app, authorize your appliance to accept control commands from your mobile app or voice commands.

To start the network control, touch and hold **Rinse Only** and **START/CANCEL** together for 5 seconds until the Wi-Fi indicator stops flashing and remains lit.



You have successfully connected the dishwasher and enabled remote command and control. Access your Dishwasher on the **Devices** tab in the Amazon Alexa app. You can also change the name from "First Dishwasher" to "Dishwasher" in the Devices tab by selecting the Settings icon in the top right corner, and then selecting Edit Name.

Alexa Command List

Turn ON/OFF	<i>Alexa, turn on dishwasher</i> <i>Alexa, turn off dishwasher</i>	Washing Zone	<i>Alexa, set wash zone to upper</i> <i>Alexa, set wash zone to lower</i> <i>Alexa, set wash zone to both</i>
A Cycle Mode Program Operation Mode	<i>Alexa, set dishwasher "A" to "B"</i> <i>(E.g. Alexa, set dishwasher cycle to auto.)</i>	Child Lock	<i>Alexa, turn on child lock</i> <i>Alexa, turn off child lock</i>
		Delay Time	<i>Alexa, set delay to x hour(s)</i> <i>Alexa, set delay start to x hour(s)</i>
B Auto Heavy Duty Normal Light Express Wash Rinse Only	<i>Alexa, "A" or "B" Pause on my dishwasher</i> <i>(E.g. Alexa, turn on pause on my dishwasher.)</i>	A Enable Activate Start Turn On	
		B Disable Deactivate Stop Turn Off	
A Engage Enable Turn On Turn Off	<i>Alexa, "A" "B"</i> <i>(E.g. Alexa, turn on power wash.)</i>	Dishwasher Status	
B Power Wash Heat Dry High Temp Wash Fan Dry Sanitize		Check the current mode	<i>Alexa, what is the dishwasher cycle?</i> <i>Alexa, what is the dishwasher mode?</i>
		Check the current status	<i>Alexa, what is the status on the dishwasher?</i> <i>Alexa, what is the status in the dishwasher?</i>
		Remaining Wash Time	<i>Alexa, what is the dishwasher's remaining time?</i>

Note: Alexa command list is subject to change without notice. For the latest command list, please visit shop.sharppusa.com.