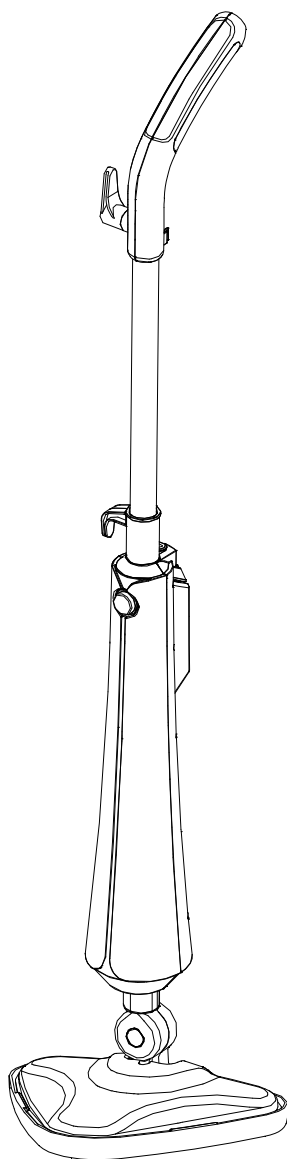


True & Tidy

STEAM MOP
Instruction Manual
STM-300



www.trueandtidy.com

WARRANTY

TRUE & TIDY (1) Year Limited Warranty

True & Tidy products are warranted for 1 year from the date of purchase if the appliance is defective in materials or workmanship. True & Tidy will repair or replace (at our option) your unit during this period. Any replacement product will carry the remaining warranty of the original product.

True & Tidy is not liable for any incidental, misuse, negligence or failure to follow True & Tidy's user manual.

To obtain a repair or replacement under the terms of this warranty, contact customer service for return authorization. After receiving authorization, carefully pack your unit and return to the service center. Please enclose a note or letter explaining the issue along with proof of purchase and \$9.95 for shipping and handling. Please provide your name, phone number, and complete address.

If you have any questions regarding this warranty, you may contact us through our website: www.trueandtidy.com

Customers located outside of the continental US will be responsible for all international shipping charges for your return or replacement.

IMPORTANT SAFETY MEASURES

At True & Tidy, safe performance is our top priority in any consumer product, so that you can use and trust our products confidently. Please use and operate product with due care and attention placed on the following operating instructions.

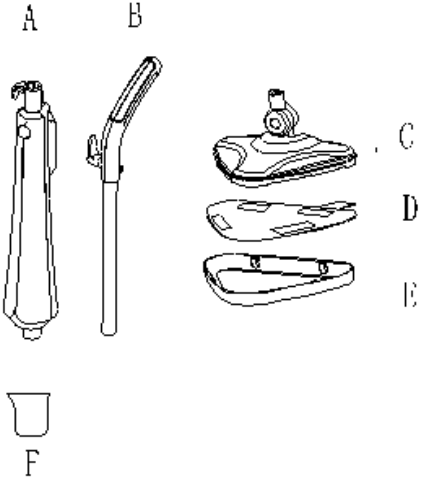
IMPORTANT

- Carefully read all instructions before operating the steam mop for the first time.
- This appliance is not intended for use by children or persons with physical, mental or sensory capabilities, or lack of experience and knowledge without the supervision or instruction concerning the use of the appliance by a person responsible for their safety.
- Remove and safely discard the protective cover to prevent choking hazard for children.
- Ensure the steam mop is properly assembled before use.
- Only use attachments or accessories provided and specified in this instruction manual.
- Always test the appliance at a small, inconspicuous spot before cleaning. Do not place the appliance in the same spot for more than 10 seconds to avoid damage from heavy heating.
- Never use the appliance without the mop pad.
- Allow the steam mop to cool down completely before storing.
- Store the appliance indoors in a cool, dry place.
- Do not touch the bottom of the appliance during operation.
- Do not leave appliance unattended while it is in operation or connected.
- Do not use steam mop if it shows visible signs of damage or if there is leaking.
- Do not use the appliance if the power cord is damaged.
- Do not tilt or turn the appliance over when in use. Only use on flat, horizontal surfaces.
- Do not fill the water tank with hot water or corrosive cleaning agents. Distilled or filtered water is strongly recommended.
- Only connect to 120V power outlet.
- Do not immerse the appliance, plug, or power cord in water to reduce the risk of electric shock.

COMPONENTS

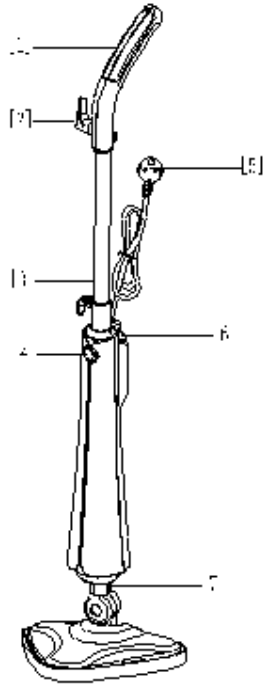
PARTS & ACCESSORIES

- A Main Body
- B Main Handle
- C Steam Mop Head
- D Microfiber Pad
- E Carpet Gilder
- F Measuring Cup



PRODUCT COMPONENTS

- 1 Handle
- 2 Cord Hook
- 3 Handle Bar
- 4 On/Off Power Switch
- 5 Power Cord
- 6 Water Reservoir
- 7 Steam Mop Head Joint
- 8 Steam Mop Head



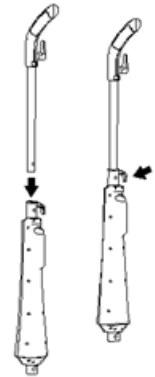
PRODUCT SPECIFICATION

Model:	STM-300
Water Tank Capacity:	350 ml
Steam Ready Time:	30 seconds
Steam Time:	15 minutes
Input Voltage:	120v
Output Power:	1300 Watts

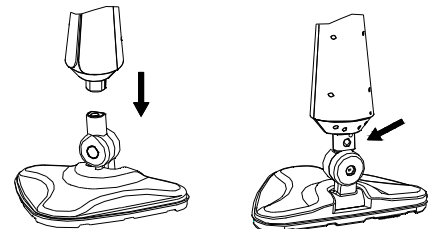
INSTRUCTIONS FOR USE

ASSEMBLING YOUR STEAM MOP

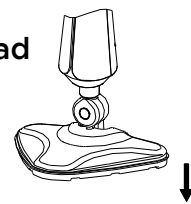
1. Slide the main handle into the main body until it locks into place.



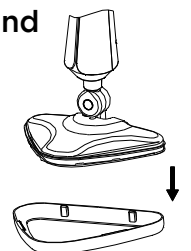
2. Slide the bottom end of the main body on top of the steam mop head joint until it locks into place.



3. Secure the Mop pad to the bottom of the steam mop head firmly.



4. For carpet cleaning, make sure the Mop Pad is secured and place Mop Pad on top of the Carpet Glider.

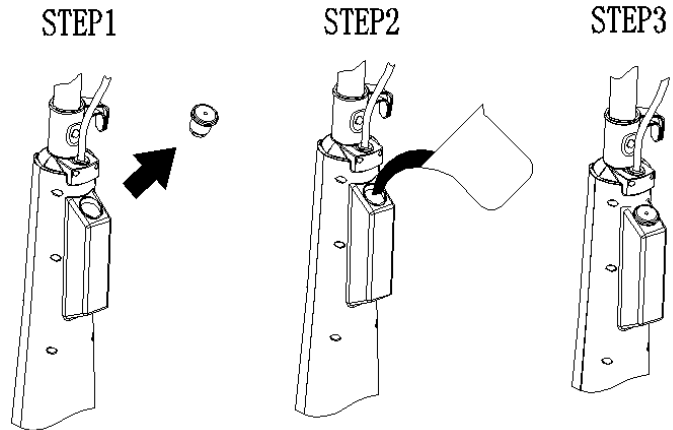


OPERATING YOUR STEAM MOP

1. Open the cover to the water reservoir.

2. Use measuring cup and fill with water. Do not overfill.

3. Put cover back on water reservoir.



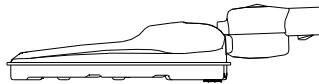
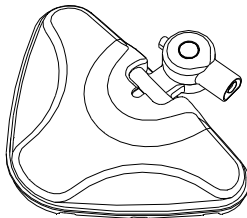
4. Plug in steam mop and turn on by pressing On/Off power button.

5. Once on, the indicator light will turn red, indicating preheating.

6. After 30 seconds of preheating, the indicator light will turn blue.

Steam mop is now ready for use.

7. Rotatable triangular mop head allows you to get tight corners and crevices easily.



CARE INSTRUCTIONS

CLEANING AND MAINTENANCE

IMPORTANT: Allow the steamer to fully cool down before performing any maintenance or troubleshooting checks.

Maintenance

- Ensure that the steam mop is off before cleaning.
- Empty the water tank after use.
- Do not immerse the appliance in water.
- Store steam mop in a cool, dry place.
- If steam becomes intermittent throughout use, steam mop may need descaling.

Descaling Instructions

1. Prepare a solution of 1/3 white vinegar and 2/3 tap water and add to the water tank.
2. Plug in the cord and turn on the steam mop. Run the vinegar/water solution until it runs out.
3. Repeat the above procedure as needed until a normal steam flow rate is achieved.
4. Fill the water tank with distilled water to clean.
5. Run the distilled water until it runs out.

WARNING

Do not leave the appliance unattended during the descaling process and/or while in use.

CLEANING MICROFIBER PAD

- Machine washable on "warm" setting.
- Always use a mild detergent.
- For best care results, lay flat to dry.
- Never use bleach or fabric softener when washing the microfiber cleaning pad.

STORAGE

- Once the appliance has been disconnected from the power outlet, allow 30 minutes for the appliance to cool down.
- Empty the remaining water in the tank and clean the external surface with a dry cloth.
- Wrap the cord safely around the steam mop cord wrap and store in a dry, cool, flat surface.
- Remove and wash mop pad for next use.

TROUBLESHOOTING GUIDE

PROBLEM	POSSIBLE REASON	POSSIBLE SOLUTION
Reduced steam or no steam	Water tank may be empty	Fill water into the water tank
	Steam mop head may be blocked	Clean steam mop head
Unit will not turn on	Blown fuse or breaker	Replace fuse or reset breaker in home
	There is no power to the unit	Make sure unit is plugged in
	Internal fuse is blown	Contact with customer service



www.trueandtidy.com



facebook.com/TrueandTidyHome



Instagram.com/trueandtidyhome