

SALAV

USER MANUAL

Please read all instructions
carefully before using
this product.

Garment Steamer
Model: GS49-DJ



www.salavusa.com

Dear Valued Customer

Thank you for purchasing this SALAV product. Please read this manual prior to using your SALAV appliance. For more product information, FAQ and customer support please visit our website at www.salavusa.com.

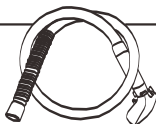
Important Safe Instructions:

1. The voltage of your electrical source must correspond to that of the appliance (110-120V~60Hz). Connecting to the incorrect voltage may cause unrepairable damage to the appliance and will invalidate the warranty.
2. Do not share the power supply with other high-powered electric appliances.
3. To reduce the risk of electric shock, do not immerse the appliance, plug, or power cord in water or other liquids.
4. Do not leave this appliance unattended while it is in operation.
5. Fill in water before using and observe the water level during use.
6. Do not lay hose on the ground. Do not wind hose. Do not operate the appliance if cord is damaged.
7. Always keep the hose and nozzle elevated above the water tank. Never insert any object into any opening or hose.
8. Do not cut or attempt to extend the steaming hose or power cord.
9. Do not place the nozzle directly on any surface or the appliance power cord while it is hot or plugged in.
10. Be cautious about steam spraying out from the nozzle. Do not direct steam at people or animals, or use steamer on garments while they are being worn.
11. Steam only in a vertical motion. Never use steamer in a horizontal position or tilt backwards - doing so may result in hot water discharge.
12. Move the appliance by firmly grasping the pole. Do not force the casters if they are stuck. Drain the water tank and water reservoir before inspecting the casters.
13. Turn off, unplug and allow the appliance to cool completely for at least 30 minutes prior to draining the water tank and water reservoir and storing.
14. Always turn off and unplug unit before refilling, draining, cleaning, moving, or when not in use.
15. For indoor use only.
16. Keep the appliance away from flammable materials and chemicals.
17. Do not fill the water tank with hot water or corrosive cleaning agents which could cause damage. Distilled or filtered water is strongly recommended.
18. When in use, this appliance will spray hot steam from its steam nozzle. To avoid injury from hot steam, do not aim the steam nozzle at people or pets.
19. Only use SALAV accessories on your SALAV appliance. The use accessory attachments other than those provided by SALAV may result in fire, electric or irreversible damage to the appliance.
20. This appliance is not intended for use by children or near children and other persons whose physical, sensory or mental capabilities or lack of experience and knowledge prevents them from using the appliance safely without supervision or instruction or instruction by a responsible person to ensure that can use the appliance safely.

COMPONENTS



Multifunctional Hanger



Steam Hose



Water Tank with Cap



Telescopic Poles



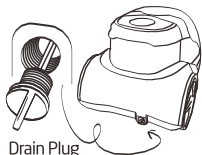
Steam Nozzle



Mini Ironing Board



Fabric Brush



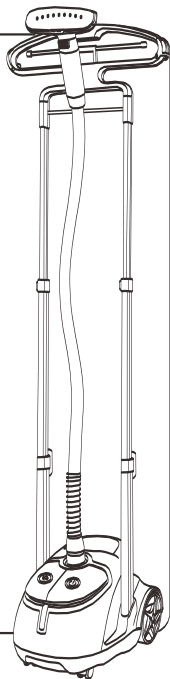
Drain Plug



Pants Press



2 Clips



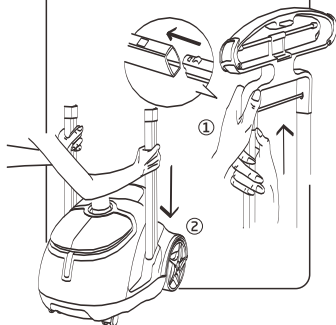
PRODUCT SPECIFICATION

Model	GS49-DJ
Water Tank Capacity	1.8L
Steam Output Time	45 seconds
Input Voltage	110-120V~/60Hz
Output Power	1260-1500W

SETTING UP YOUR GARMENT STEAMER

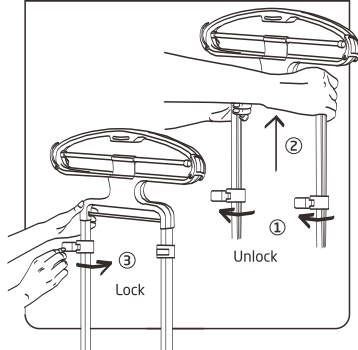
STEP 1

Insert the Telescopic Poles (The side with triggers) into the Multifunctional Hanger, insert the other side into the main body, and lock in place.



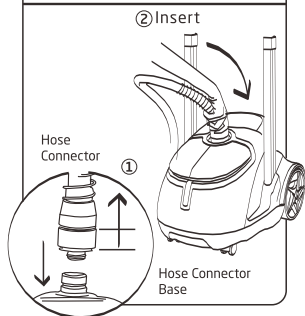
STEP 2

Extend the Telescopic Poles to desired height and lock in place.



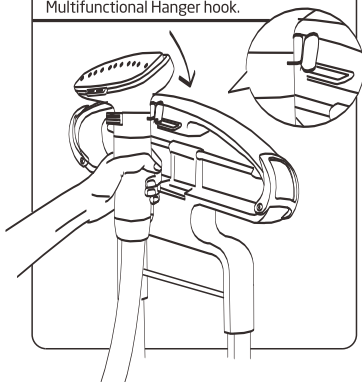
STEP 3

Press the Hose Connector upwards and connect the hose with the Hose Connector Base, let the hose connector lock in place.



STEP 4

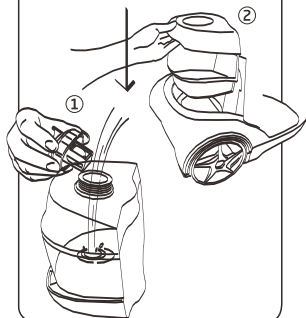
Hang steamer nozzle handle to the Multifunctional Hanger hook.



INSTRUCTIONS FOR USE

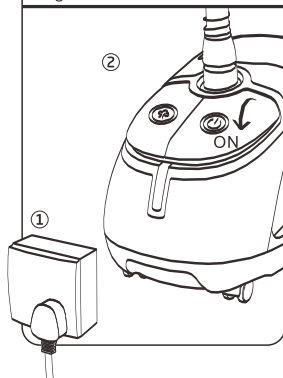
STEP 1

Fill in the Water Tank and replace & tighten its cap.



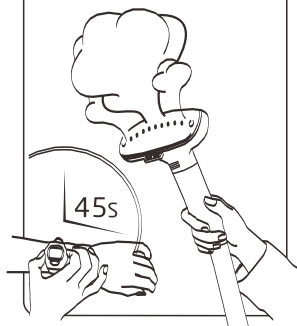
STEP 2

Plug in & turn on.



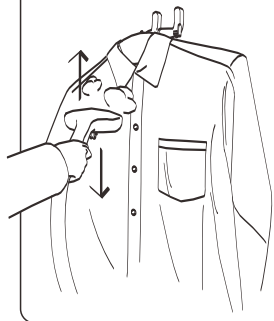
STEP 3

Wait for 45s and steam comes out.



STEP 4

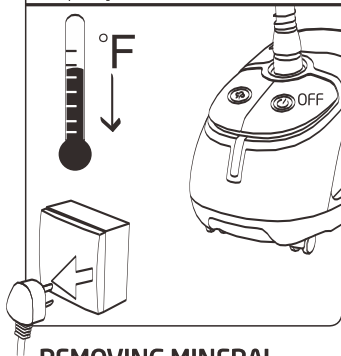
Ready for garment steaming.



MAINTENANCE AND CLEANING

STEP 1

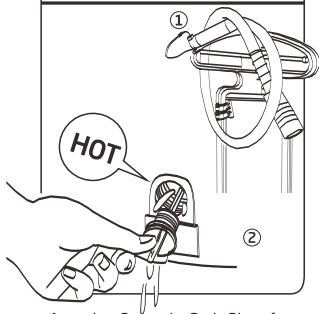
Turn off the unit and unplug it. Wait for at least 30mins until the units cools down completely.



REMOVING MINERAL BUILD-UP

STEP 2

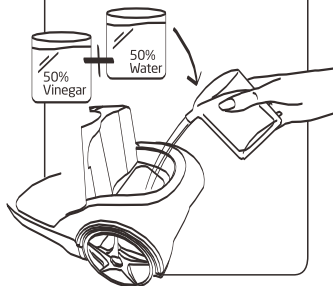
Disassembly: Press the Telescopic Poles Locks at the bottom of the base to unlock the poles with both hands, pull out the poles. Unscrew the Drain Plug to empty the water reservoir.



Attention: Screw the Drain Plug after the water reservoir is empty. Make sure the Drain Plug is screwed time before use.

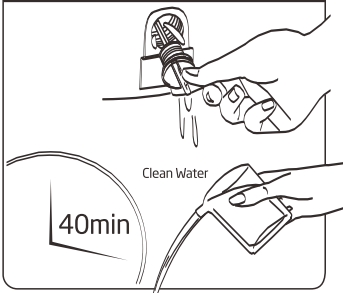
STEP 1

Turn off and unplug the unit and cool for at least 30mins. Remove water tank. Mix water & vinegar solution and pour into water reservoir.

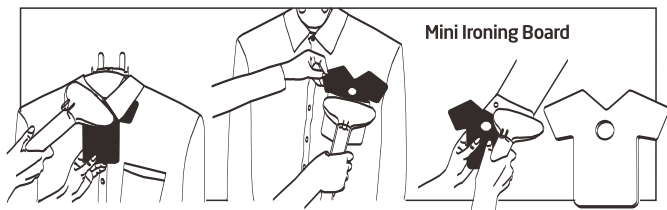
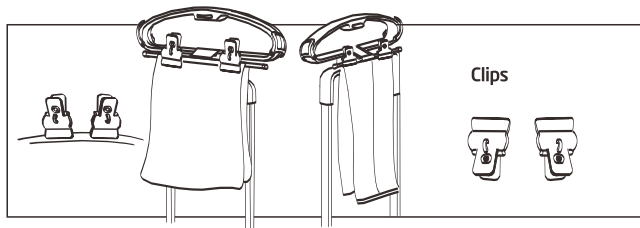
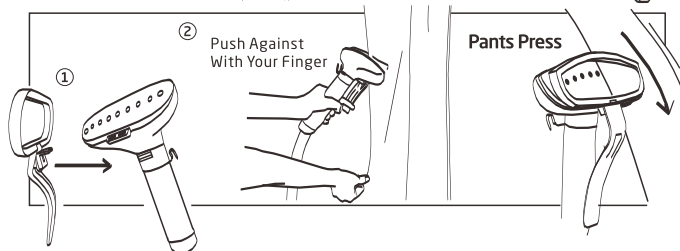
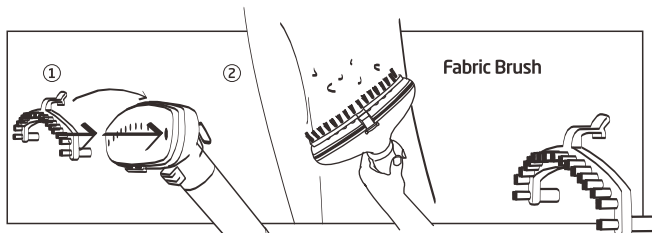


STEP 2

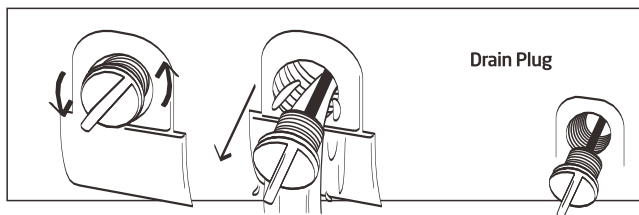
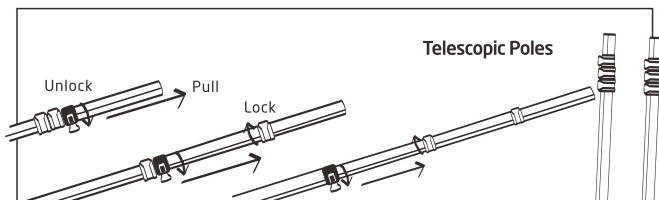
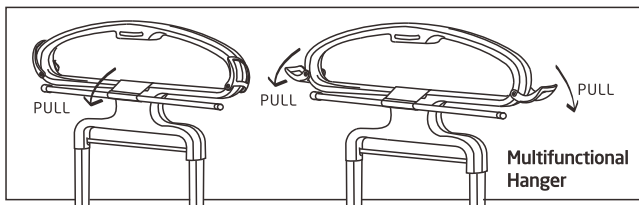
Wait for 40mins, unscrew the Drain Plug and drain the water reservoir. Pour clean water into reservoir and let it drain. After the reservoir is empty, replace and tighten the Drain Plug.



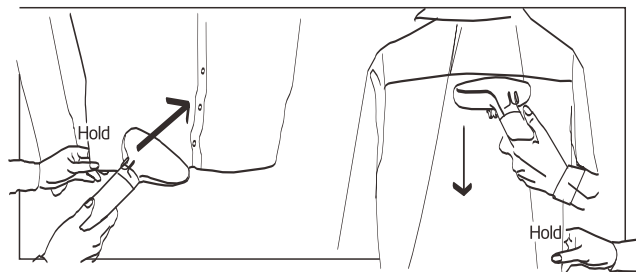
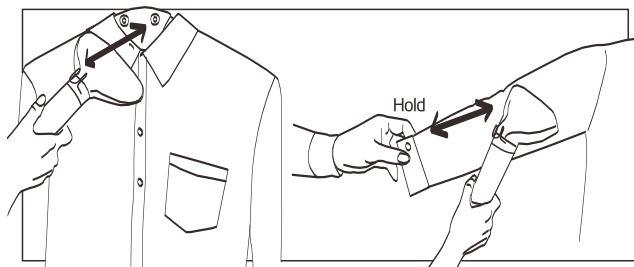
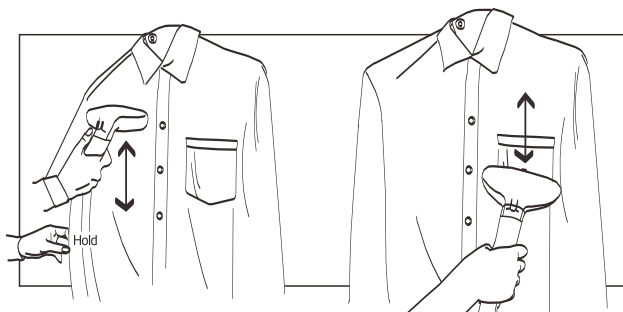
ACCESSORIES ASSEMBLY AND USE




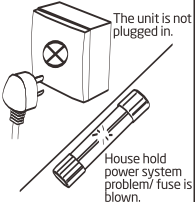

ACCESSORIES ASSEMBLY AND USE

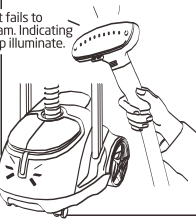

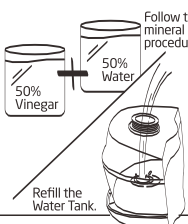


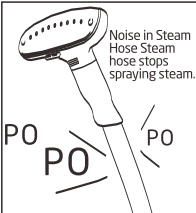
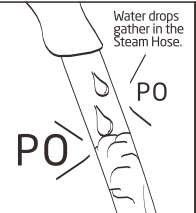

STEAMING INSTRUCTION

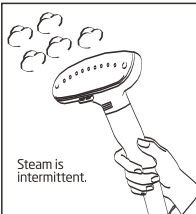
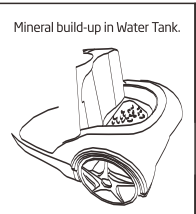
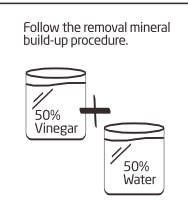


TROUBLE SHOOTING

Problems	Reason	Solution
<p>Unit fails to steam. Indicating lamp does not illuminate.</p> 	<p>The unit is not plugged in.</p>  <p>House hold power system problem/ fuse is blown.</p>	<p>Plug in the unit.</p>  <p>Call a qualified electrician for help.</p>

<p>Unit fails to steam. Indicating lamp illuminate.</p> 	<p>Mineral build-up.</p>  <p>Water Tank is empty.</p>	<p>Follow the removal mineral build-up procedure.</p>  <p>50% Vinegar + 50% Water</p> <p>Refill the Water Tank.</p>
---	--	--

<p>Noise in Steam Hose Steam hose stops spraying steam.</p> 	<p>Water drops gather in the Steam Hose.</p> 	 <p>Straight the Steam Hose.</p>
--	---	--

<p>Steam is intermittent.</p> 	<p>Mineral build-up in Water Tank.</p> 	<p>Follow the removal mineral build-up procedure.</p>  <p>50% Vinegar + 50% Water</p>
---	--	--

Visit our website to find product tips, customer support and learn about
SALAV patented steam technology.
www.salavusa.com

