



SALAMANDER
DESIGNS

Furniture Shaped By Your Needs ®

COLLABORATION FURNITURE

BUNDLE SOLUTIONS



6 BAY CREDENZA

D2/367A/

This robust, large-capacity cabinet system houses all electronics, including integrated support for AV and IT systems. Freestanding and fully-integrated, this credenza is perfect for retrofit installations, allowing for quick and efficient installation without involving additional tradespeople to install electrical wiring or reinforce walls.

Available in a variety of styles.



DYO
DESIGN YOUR OWN

See our **full-line catalog** for more customizable credenzas or visit SalamanderDesigns.com/Commercial.



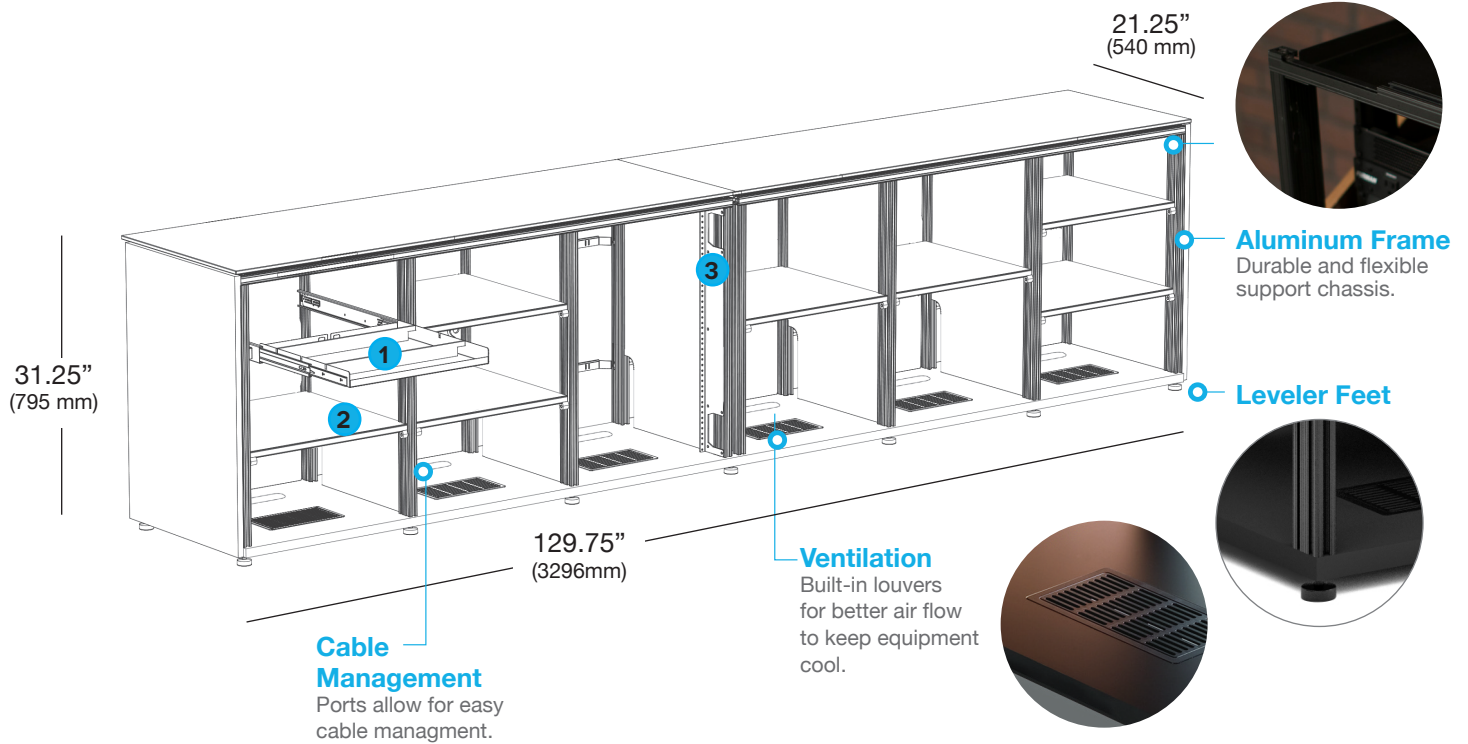


6 BAY, DUAL MONITOR CREDENZA

COLLABORATION FURNITURE

D2/367A/

BUNDLE SOLUTIONS



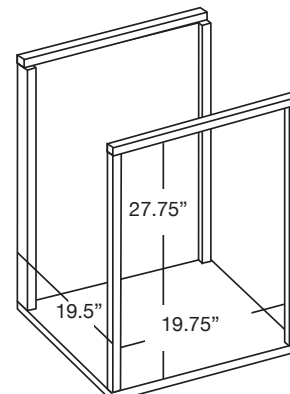
*CREDENZA INCLUDES:

1. (1) Pull-Out Storage Tray
2. (7) Adjustable Shelves
3. (1) 15-U Rack Rails & (2) Lacing Bars
4. (1) Active Cooling Rear Panel
5. (5) Pinch-Out Rear Panels

** Due to standard shipping constraints, cabinet ships as two cabinets with instructions to easily fasten. Special freight arrangements can be made to ship completely assembled.*

Typical interior bay dimensions:

19.75"W (502 mm) x 27.75"H (705 mm)
x 19.5"D (495 mm)

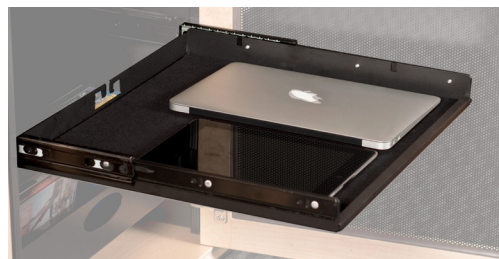




INTERIOR STORAGE

Pull-Out Storage Tray

- Storage tray with adjustable dividers (2), felt liner and integrated wire manager
- Utilizes heavy duty ball bearing slides, black steel body.
- Maximum Weight Capacity: 50 lbs (22.6 kgs)
- Measures: 17.25"W (438mm) x 16"D (406mm) x 1.625"H (42mm)



Adjustable Shelves (7 included)

- Fully adjustable
- Matte black, powder-coated MDF
- Maximum Weight Capacity: 75 lbs (34 kgs)
- Measures: 19.75"W (502mm) x 17.5"D (445mm) x .625" TH (16mm)



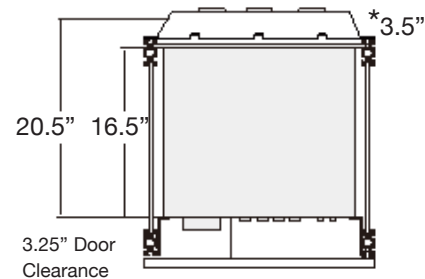
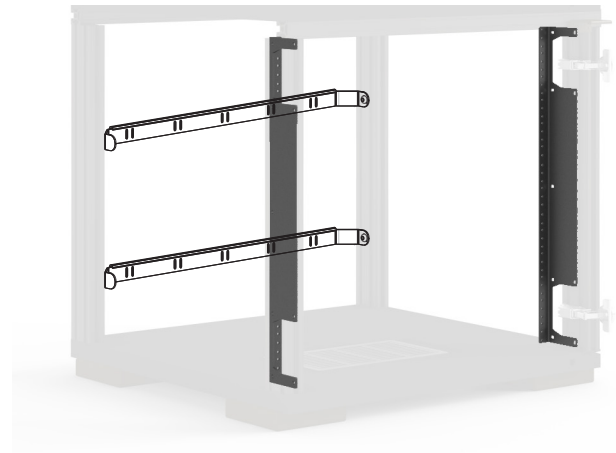
SalamanderDesigns.com/Commercial | 800.535.9910

©2016 Salamander Designs Ltd.



15-U RACK RAILS

- Frame-Mounted, 15-U Rack Rails are affixed to cabinet's aluminum frame
- Rails are compatible with all industry standard 19" components and accessories
- Wire manager, lacing bars included (2)
- Hole pattern is a standard 19 EIA rack mount pattern allowing for mounting of equipment with attachment holes either wide or universally spaced.
- Threaded for 10-32 screws
- Black powder coated steel



* When using optional Extended Rear Panel (sold separately).

Add On:

- Cabinet Mounted Wire Lacing Bars FI/RMLB
- Full-height and component-height rack rails. Can be mounted to rear of cabinet.
FI/RM2U, FI/RM/3U, FI/RM40,
FI/630/RMK/A, FI/620/RMK/A



COOLING & ACCESS

Active Cooling Rear Panel

- Thermostatically controlled cooling system turns On at approx 80° F, maximum speed is reached at 95° F
- Automatic, low-noise cooling system with 22 dBA, quad 80 mm exhaust fans
- Air Flow: 26 CFM
- Exhaust Direction: Rearward
- Power Consumption: 1W in standby mode; 4 W in mid speed 8-10 W in full speed
- Thermistor: Remote with 20" lead
- Input: 100-240V / 50Hz-60Hz. International power plug available (#400-230 and 400-235)



Pinch-Out Rear Panels (5 included)

- Permit fast, easy access to components and wiring.





6 BAY, DUAL MONITOR CREDENZA

COLLABORATION FURNITURE

D2/367A/

BUNDLE SOLUTIONS

STYLES

We select the finest materials and finishes. Choose from sleek, hand-polished, high-gloss finishes to richly textured real wood fronts or a contemporary beveled edge style with a mix of materials.

**All styles come standard with leveler feet*

If you are looking for something different or special please contact us to discuss custom options.

TEXTURED



BERLIN
Wenge, Wave-Texture
Doors with 1/2" (12mm) Black,
Solid Surface
D2/367A/BL/WE



CHICAGO
Black Oak, Grass-Texture
Doors with 1/2" (12mm) Black,
Solid Surface
D2/367A/CH/BO



DENVER - OAK
Natural Oak, Bark-Texture
Doors with 1/2" (12mm) Black,
Solid Surface
D2/367A/DV/NO



DENVER - WALNUT
Medium Walnut, Bark-Texture
Doors with 1/2" (12mm) Black,
Solid Surface
D2/367A/DV/MW



ZURICH
Linear Texture - Opium Brown
Doors with 1/2" (12mm) Black,
Solid Surface
D2/367A/ZU/OB

BLACK & WHITE



OSLO
Black Oak Sides, Black Glass
Doors with 1/2" (12mm) Black,
Solid Surface
D2/367A/OS/BG



MIAMI - BLACK
Gloss Warm White
Doors with 1/2" (12mm) Black,
Solid Surface
D2/367A/MM/GW/BK



MIAMI - WHITE
Gloss Warm White
Doors with 1/2" (12mm) White
Solid Surface
D2/367A/MM/GW/WH