



Philips Brilliance
LCD monitor with USB-C
Dock

P Line

32 (31.5"/80 cm diag.)
3840 x 2160 (4K UHD)

Brilliance

329P1H

Master every task in a crisp view

The Philips USB-C docking display for a comprehensive solution. View UltraClear 4K UHD and re-charge a laptop up to 90 W, all at the same time with a single USB-C cable. Pop-up webcam with Windows Hello delivers performance and convenience.

Single cable USB-C connection

- USB-C enables laptop power charging directly from a monitor
- Built-in RJ-45 Ethernet gives data security

Designed for the way you work

- UltraClear 4K UHD (3840 x 2160) resolution for precision
- IPS technology for full colours and wide viewing angles
- Securely sign in with pop-up webcam with Windows Hello™
- Less eye fatigue with Flicker-Free technology
- LowBlue Mode for easy-on-the-eyes productivity
- EasyRead mode for a paper-like reading experience
- TUV Eye Comfort certified to reduce eye fatigue

Sustainable Eco-design

- PowerSensor saves up to 80% energy costs
- LightSensor for the perfect brightness with minimal power
- Designed to meet environmental standards



PHILIPS

LCD monitor with USB-C Dock
P Line 32 (31.5"/80 cm diag.), 3840 x 2160 (4K UHD)

329P1H/00

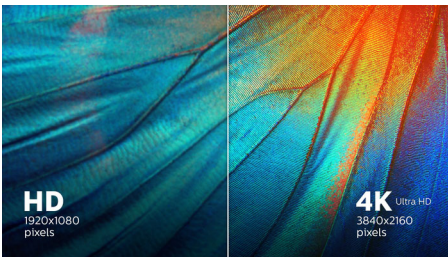
Highlights

USB Type-C connection



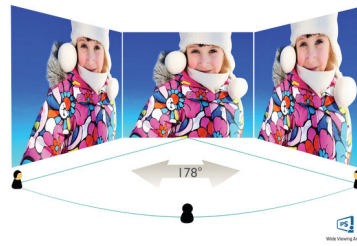
This Philips display features a built-in USB type-C docking station with power delivery. With intelligent and flexible power management, you can power charge your compatible* laptop directly. Its slim, reversible USB-C connector allows for easy, one-cable docking. Simplify by connecting all your peripherals like keyboard, mouse and your RJ-45 Ethernet cable to the monitor's docking station. You can watch high-resolution video and transfer data at super-speed, while powering up and re-charging your notebook at the same time.

UltraClear 4K UHD Resolution



These Philips displays utilise high-performance panels to deliver UltraClear, 4K UHD (3840 x 2160) resolution images. Whether you are a demanding professional requiring extremely detailed images for CAD solutions, a user of 3D graphics applications or a financial wizard working on huge spreadsheets, Philips displays will make your images and graphics come alive.

IPS technology



IPS displays use advanced technology that gives you extra-wide viewing angles of 178/178 degrees, making it possible to view the display from almost any angle — even in 90-degree Pivot mode! Unlike standard TN panels, IPS displays gives you remarkably crisp images with vivid colours, making it ideal not only for Photos, films and web browsing, but also for professional applications that demand colour accuracy and consistent brightness at all times.

Windows Hello™ pop-up webcam



Philips' innovative and secure webcam pops up when you need it and securely tucks back into the monitor when you are not using it. The webcam is also equipped with advanced sensors for Windows Hello™ facial recognition, which conveniently logs you into your Windows devices in less than 2 seconds, 3 times faster than a password.

Flicker-Free technology



Due to the way brightness is controlled on LED-backlit screens, some users experience

flicker on their screen which causes eye fatigue. Philips Flicker-Free technology applies a new solution to regulate brightness and reduce flicker for more comfortable viewing.

LowBlue Mode

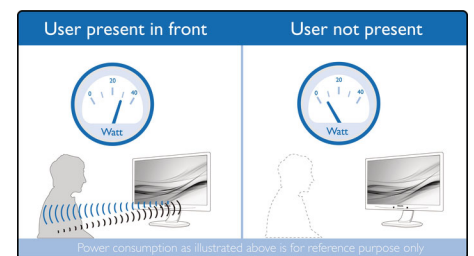


Studies have shown that just as ultra-violet rays can cause eye damage, shortwave-length blue light rays from LED displays can cause eye damage and affect vision over time. Developed for wellbeing, the Philips LowBlue Mode setting uses a smart software technology to reduce harmful shortwave blue light.

TUV Rheinland Eye Comfort

Philips displays meet TUV Rheinland Eye Comfort standard to prevent eye strain caused by prolonged computer use. With TUV Eye Comfort certification, Philips displays ensure flicker-free, low-blue mode, no disturbing reflections, a wide viewing angle, less reduction of image quality from different angles and ergonomic stand designs for an ideal viewing experience. Keep your eyes healthy and boost work productivity.

PowerSensor



PowerSensor is a built-in 'people sensor' that transmits and receives harmless infrared signals to determine if the user is present and then automatically reduces monitor brightness when the user steps away from the desk, cutting energy costs by up to 80 percent and prolonging monitor life



Specifications

Picture/Display

- LCD panel type: IPS technology
- Backlight type: W-LED system
- Panel Size: 31.5 inch/80 cm
- Display Screen Coating: Anti-Glare, 3H, Haze 25%
- Effective viewing area: 697.3056 (H) x 392.2344 (V)
- Aspect ratio: 16:9
- Optimum resolution: 3840 x 2160 @ 60 Hz
- Pixel Density: 140 PPI
- Response time (typical): 4 ms (Grey to Grey)*
- Brightness: 350 cd/m²
- Contrast ratio (typical): 1000:1
- SmartContrast: 50,000,000:1
- Pixel pitch: 0.18159 x 0.18159 mm
- Viewing angle: 178° (H)/178° (V), @ C/R > 10
- Picture enhancement: SmartImage
- Display colours: Colour support 1.07 billion colours
- Colour gamut (typical): NTSC 117%*, sRGB 128%*, Adobe RGB 89%*
- Scanning Frequency: 30–140 kHz (H) / 23–75 Hz (V)
- SmartUniformity: 93 ~ 105%
- Delta E: < 2 (sRGB)
- sRGB
- Flicker-free
- LowBlue Mode
- EasyRead
- Adaptive sync

Connectivity

- Signal Input: DisplayPort 1.4 x 1, HDMI 2.0 x 2, USB-C x 1
- HDCP: HDCP 2.2 (HDMI/DP/USB-C)
- HBR3: for USB-C
- Audio (In/Out): Audio out
- RJ45: Ethernet LAN up to 1 G*, Wake on LAN
- Sync Input: Separate Sync

USB

- USB Ports: USB-C x 1 (upstream, DisplayPort Alt mode, HDCP 2.2); USB-A x 4 (downstream with 1 fast charge BC1.2)
- Power delivery: USB-C: USB PD version 3.0, up to 90 W (5 V/3 A, 7 V/3 A, 9 V/3 A, 10 V/3 A, 12 V/3 A, 15 V/3 A, 20 V/4.5 A); USB-A (side): x 1 fast charge BC1.2, up to 7.5 W (5 V/1.5 A)
- Super speed: USB-C: USB 3.2 Gen2, 10 Gbps; USB-A: USB 3.2 Gen1, 5 Gbps

Convenience

- Built-in Speakers: 5 W x 2
- Built-in webcam: 2.0 megapixel FHD camera with microphone and LED indicator (for Windows 10 Hello)
- User convenience: SmartImage, Input, User, Menu, Power On/Off
- Control software: SmartControl
- OSD Languages: Brazil Portuguese, Czech, Dutch, English, Finnish, French, German, Greek, Hungarian, Italian, Japanese, Korean, Polish, Portuguese, Russian, Simplified Chinese, Spanish, Swedish, Traditional Chinese, Turkish, Ukrainian
- Other convenience: Kensington lock, VESA mount

- (100 x 100 mm)
- Plug and Play Compatibility: DDC/CI, Mac OS X, sRGB, Windows 10 / 8.1 / 8 / 7

Stand

- Height adjustment: 180 mm
- Pivot: -/+ 90 degree
- Swivel: -/+ 180 degree
- Tilt: -5~25 degree

Power

- ECO mode: 26.8 W (typ.)
- On mode: 31.8 W (typ.) (EnergyStar test method)
- Standby mode: 0.3 W
- Off mode: Zero watts with Zero switch
- Energy Label Class: A
- Power LED indicator: Operation - White, Standby mode - White (flashing)
- Power supply: Built-in, 100–240 VAC, 50–60 Hz

Dimensions

- Product with stand (max height): 714 x 649 x 280 mm
- Product without stand (mm): 714 x 422 x 62 mm
- Packaging in mm (W x H x D): 930 x 563 x 186 mm

Weight

- Product with stand (kg): 12.2 kg
- Product without stand (kg): 8.19 kg
- Product with packaging (kg): 15.51 kg

Operating conditions

- Temperature range (operation): 0°C to 40°C °C
- Temperature range (storage): -20°C to 60°C °C
- Relative humidity: 20%-80 %
- Altitude: Operation: +12,000 ft (3658 m), Non-operation: +40,000 ft (12,192 m)
- MTBF (demonstrated): 70,000 hrs (excluded backlight)

Sustainability

- Environmental and energy: PowerSensor, LightSensor, EnergyStar 8.0, EPEAT*, TCO Certified Edge, RoHS
- Recyclable packaging material: 100 %
- Post-consumer recycled plastic: 85%
- Specific Substances: PVC/BFR free housing, Mercury free, Lead free

Compliance and standards

- Regulatory Approvals: UKRAINIAN, EPA, cETLus, CB, TUV/GS, TUV Ergo, SEMKO, CU-EAC, EAEU RoHS, CE Mark, FCC Class B, ICES-003, TUV Eye Comfort certified

Cabinet

- Front bezel: Black
- Rear cover: Black
- Foot: Black
- Finish: Texture

What's in the box?

- Monitor with stand
- Cables: HDMI cable, DP cable, USB-C to C/A Y

- cable, Power cable
- User Documentation



Issue date 2020-12-30

Version: 3.0.1

12 NC: 8670 001 67985
EAN: 87 12581 76805 8

© 2020 Koninklijke Philips N.V.
All Rights reserved.

Specifications are subject to change without notice.
Trademarks are the property of Koninklijke Philips N.V.
or their respective owners.

www.philips.com

- * "IPS" word mark / trademark and related patents on technologies belong to their respective owners.
- * Response time value equal to SmartResponse
- * NTSC Area based on CIE 1976
- * sRGB Area based on CIE 1931
- * Adobe RGB Coverage based on CIE 1976
- * Activities such as screen sharing and online streaming over the Internet can impact your network performance. Your hardware and network bandwidth will determine the overall audio and video quality.
- * For USB-C power and charging function, your Notebook/device must support USB-C standard Power Delivery specifications. Please check with your Notebook user manual or manufacturer for more details.
- * For Video transmission via USB-C, your Notebook/device must support USB-C DP Alt mode
- * If your Ethernet connection seems slow, please enter the OSD menu and select USB 3.0 or a higher version that can support the LAN speed up to 1G.
- * EPEAT rating is valid only where Philips registers the product. Please visit <https://www.epeat.net/> for registration status in your country.
- * The monitor may look different from feature images.