



Philips Signage Solutions  
LED Display

27"

Direct View LED

**Signage**Solutions



27BDL9115L

## Limitless

Bezel-free LED display wall.

Fill their imagination. Create seamless displays. With an L-Line Professional LED Display Wall, the possibilities are endless. The bezel-free design, wide viewing angle, and breathtaking brightness ensure authoritative imaging. At any size.

### **Effortless setup. Reliable performance.**

- Join multiple cabinets to achieve higher resolution
- Built-in rear cable cover. Easy cable management
- Front-access LED modules. Easy maintenance and servicing
- High performance gold-wire LEDs

### **Immersive viewing. Versatile LED solution.**

- Perfect clarity. From broadcast studio to control room
- Ultra-high refresh rate. Smooth, judder-free images
- Ultra-thin pixel pitch of 1.5 mm. Beautiful at any size
- Create bezel-free video walls of any shape or size

### **Spectacular picture. Endless possibilities.**

- Ultra-high brightness even at wide viewing angles
- Zero bezel. Create seamless display screens
- LED display. Superb image quality. Perfect uniformity

**PHILIPS**

# Specifications

## Picture/Display

- Brightness before calibration: 900 nits
- Brightness after calibration: 800 nits
- Color temperature default: 6500±500 K
- Color temperature adjust range: 4000~9500 K (by software)
- Viewing angle (H / V): 160 / 160 degree
- Brightness Uniformity: >=97%
- Contrast ratio (typical): >=3000:1
- Calibration(brightness/color): Supported
- Refresh rate(Hz): 1920~3840
- Frame frequency (Hz): 50 & 60
- Aspect ratio: 16:9
- Picture enhancement: Dynamic contrast enhancement, Wide color gamut display
- Placement: Landscape
- Usage: 24/7 Hrs, Indoor

## Convenience

- Signal control loop through: RJ45
- Ease of installation: Guide pins, Light weight, Locking mechanism for cabinet
- Power loop through: For 230V environments: 8 cabinets or less, for 110V environments: 4 cabinets or less

## Operating conditions

- Temperature range (operation): -20~45 °C
- Temperature range (storage): -20~50 °C
- Humidity range (operation)[RH]: 10~80%
- Humidity range (storage) [RH]: 10~85%

## Power

- Max Power consumption (W): <=160 W W
- Consumption (Typical): <=53 W
- Input voltage: AC100~240V (50 & 60Hz)
- BTU Value m2: 2,624 BTU/m2

## Miscellaneous

- Warranty: 3 years
- Regulatory approvals: FCC SDOC, Part 15, EMC Class B, EN55032, EN55035, EN61000-3-2, EN61000-3-3, IEC/UL60950, IEC/UL62368, IEC62471, RoHS

## Cabinet

- Cabinet size (mm): 608x342x55
- Cabinet diagonal (inch): 27.5
- Cabinet resolution (W x H): 384x216
- Weight (KG): 8(+/-0.4Kg)
- Cabinet pixels (Dot): 82,944
- Cabinet area (m2): 0.2079
- Data connector: RJ45
- Power connector: In/Out(C14/C13)
- Cabinet construction: Die-Casting Aluminum
- Receiving card quantity: 2 pcs
- Receiving card spec.: A5S / A5S Plus
- Receiving card brand: Novastar

## Module

- LED type: SMD 1010 Gold wire
- Pixel constitution: 1R1G1B
- LED lifetime(Hrs): 100,000
- Module size (WxHxD in mm): 152x171x10
- Pixel pitch (mm): 1.583
- Module resolution (WxH pixels): 96x108

## Accessories

- Power loop through cable: 1 pcs
- LAN cable (RJ45, CAT-5): 1 pcs
- Common connecting piece: 4 pcs
- Screw bolt: 4 pcs (M8\*20) (Inner Hexagon Screw)
- QSG: 1 pcs

# Highlights

## LED display. Superb image

Create bezel-free video walls of any shape, size, or resolution. The modular design of Philips Professional LED cabinets means you can adapt to any space. Build vast, immersive installations or assemble intriguing patterns. Easily create video walls that flow seamlessly around doorways and other openings.

## Built-in rear cable cover.

Your Philips Professional LED Display features built-in rear cable covers to keep power and data cables tidy. Display cabinets can also be daisy-chained, for both power and data. Allowing you to minimize clutter, speed up installation.

## High performance gold-wire LED

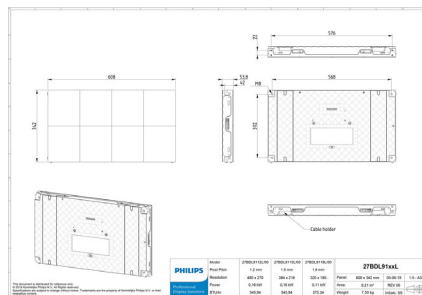
Philips Professional LED Displays use high-performance gold-wire LEDs, which are energy-efficient and cost-effective. Light is brighter, and the LEDs last longer.

## Create bezel-free video walls

Simply connect multiple LED display cabinets to create the resolution you want-whether it's 4K, 8K, or even higher. Compared to LCD screens, LED displays boast higher refresh rates that enable smoother images. Whatever the application, you'll thrill them with crystal-clear picture quality.

## Front-access LED modules.

Internal electronics are easy to access for servicing or maintenance. Each of the eight LED modules in a cabinet can be removed using a dedicated magnetic JIG tool, which lifts the module out from the front.



Issue date 2022-04-21

Version: 10.0.1

12 NC: 8670 001 59237  
EAN: 87 12581 75861 5

© 2022 Koninklijke Philips N.V.  
All Rights reserved.

Specifications are subject to change without notice.  
Trademarks are the property of Koninklijke Philips N.V.  
or their respective owners.

[www.philips.com](http://www.philips.com)