



Philips Signage Solutions
LED Display

27"

Direct View LED

SignageSolutions



27BDL9015L

Limitless

Bezel-free LED display wall.

Fill their imagination. Create seamless displays. With an L-Line Professional LED Display Wall, the possibilities are endless. The bezel-free design, wide viewing angle, and breathtaking brightness ensure authoritative imaging. At any size.

Effortless setup. Reliable performance.

- Join multiple cabinets to achieve higher resolution
- Built-in rear cable cover. Easy cable management
- Front-access LED modules. Easy maintenance and servicing

Immersive viewing. Versatile LED solution.

- Perfect clarity. From broadcast studio to control room
- Ultra-high refresh rate. Smooth, judder-free images
- Ultra-thin pixel pitch of 1.5 mm. Beautiful at any size
- Create bezel-free video walls of any shape or size

Spectacular picture. Endless possibilities.

- Zero bezel. Create seamless display screens
- LED display. Superb image quality. Perfect uniformity
- Consistent brightness even at wide viewing angles

PHILIPS

Specifications

Picture/Display

- Brightness before calibration: 750 nits
- Brightness after calibration: 650 nits
- Color temperature default: 6500±500 K
- Color temperature adjust range: 4000~9500 K (by software)
- Viewing angle (H / V): 160 / 160 degree
- Brightness Uniformity: >=97%
- Contrast ratio (typical): >=3000:1
- Calibration(brightness/color): Supported
- Refresh rate(Hz): 1920~3840
- Frame frequency (Hz): 50 & 60
- Aspect ratio: 16:9
- Picture enhancement: Dynamic contrast enhancement, Wide color gamut display
- Placement: Landscape
- Usage: 24/7 Hrs, Indoor

Convenience

- Signal control loop through: RJ45
- Ease of installation: Locking mechanism for cabinet, Guide pins, Light weight
- Power loop through: For 230V environments: 8 cabinets or less, for 110V environments: 4 cabinets or less

Operating conditions

- Temperature range (operation): -20~45 °C
- Temperature range (storage): -20~50 °C
- Humidity range (operation)[RH]: 10~80%
- Humidity range (storage) [RH]: 10~85%

Power

- Max Power consumption (W): <=160 W
- Consumption (Typical): <=53 W
- Input voltage: AC100~240V (50 & 60Hz)
- BTU Value m2: 2,624 BTU/m2

Miscellaneous

- Warranty: 2 years
- Regulatory approvals: RoHS, EN61000-3-2, EN61000-3-3, IEC/UL60950, IEC/UL62368, IEC62471, EN55032, EMC Class B, FCC SDOC, Part 15, EN55035

Cabinet

- Cabinet size (mm): 608x342x55
- Cabinet diagonal (inch): 27.5
- Cabinet resolution (W x H): 384x216
- Weight (KG): 8(+/-0.4Kg)
- Cabinet pixels (Dot): 82,944
- Cabinet area (m2): 0.2079
- Data connector: RJ45
- Power connector: In/Out(C14/C13)
- Cabinet construction: Die-Casting Aluminum
- Receiving card quantity: 2 pcs
- Receiving card spec.: A55 plus
- Receiving card brand: Novastar

Module

- LED type: SMD 1010 Copper wire
- Pixel constitution: 1R1G1B
- LED lifetime(Hrs): 100,000
- Module size (WxHxD in mm): 152x171x10
- Pixel pitch (mm): 1.583
- Module resolution (WxH pixels): 96x108

Accessories

- Power loop through cable: 1 pcs
- LAN cable (RJ45, CAT-5): 1 pcs
- Common connecting piece: 4 pcs
- Screw bolt: 4 pcs (M8*20) (Inner Hexagon Screw)
- QSG: 1 pcs

Highlights

Built-in rear cable cover.

Your Philips Professional LED Display features built-in rear cable covers to keep power and data cables tidy. Display cabinets can also be daisy-chained, for both power and data. Allowing you to minimize clutter, speed up installation.

Create bezel-free video walls

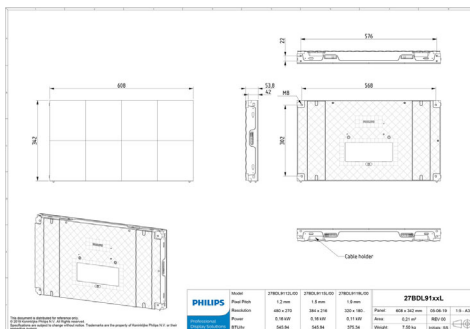
Simply connect multiple LED display cabinets to create the resolution you want-whether it's 4K, 8K, or even higher. Compared to LCD screens, LED displays boast higher refresh rates that enable smoother images. Whatever the application, you'll thrill them with crystal-clear picture quality.

Front-access LED modules.

Internal electronics are easy to access for servicing or maintenance. Each of the eight LED modules in a cabinet can be removed using a dedicated magnetic JIG tool, which lifts the module out from the front.

LED display. Superb image

Create bezel-free video walls of any shape, size, or resolution. The modular design of Philips Professional LED cabinets means you can adapt to any space. Build vast, immersive installations or assemble intriguing patterns. Easily create video walls that flow seamlessly around doorways and other openings.



Issue date 2021-09-06

Version: 1.1.1

12 NC: 8670 001 53589
EAN: 87 12581 75234 7

© 2021 Koninklijke Philips N.V.
All Rights reserved.

Specifications are subject to change without notice.
Trademarks are the property of Koninklijke Philips N.V.
or their respective owners.

www.philips.com