

Neptune™ Outdoor TV Ceiling Mount

FOR 43" TO 75" TVs

ECMUA

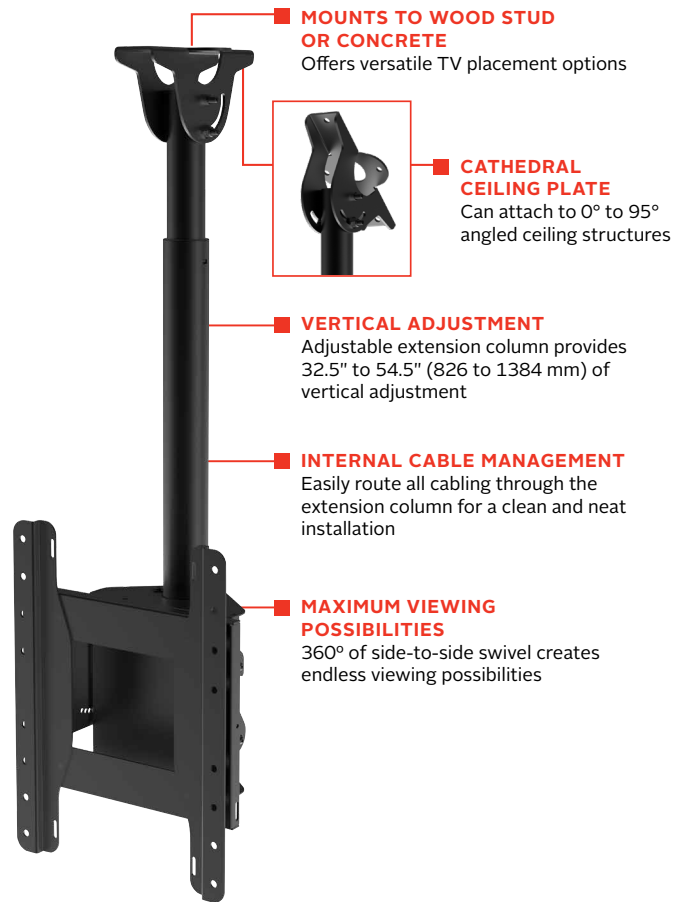


	<p>Mounting Pattern Up to 400 x 400mm* *Up to 600 x 400mm with optional EPT650</p>	<p>Max Load 175lb (79.4kg)</p>
--	---	---

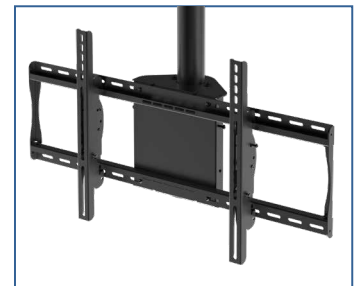
- Corrosion resistant design and stainless steel hardware included
- Dedicated mounting pattern accommodates 100 x 100, 200 x 100, 200 x 200, 300 x 200, 300 x 300, 400 x 200, 400 x 300 and 400 x 400mm VESA® mounting patterns (Optional EPT650 provides up to 600 x 400mm VESA® pattern, sold separately)
- IncreLok™ tilt of -5°, 0°, 5°, 10°, 15° or 20° ensures the ideal viewing area
- Compatible with Peerless-AV® Xtreme™ High Bright Outdoor Displays
 - XHB554
 - XHB653*

*Compatible using EPT650 accessory (not included)

Designed exclusively for Neptune™ Outdoor TVs, the Peerless-AV® corrosion resistant ceiling mount is the perfect solution for wind protected, outdoor applications. The outdoor powder coated paint and stainless steel hardware provide a proper mounting solution for areas that need corrosion protection. The cathedral ceiling plate provides flexible mounting options and the adjustable extension columns allow all cabling to be ran out of sight, through the center of the column.



Ideal for 55", 65" & 75" Neptune™ Outdoor TVs



Compatible with Outdoor Tilting TV Wall Mount (EPT650) to Accommodate VESA® Patterns up to 600 x 400mm



Please visit peerless-av.com/en-us/patents for patent information.

Model Numbers

**WARRANTY: Limited 5-year on Mount
Limited 1 Year Warranty on Corrosion**

ECMUA Neptune™ Outdoor TV Ceiling Mount for 43" to 75" TVs

Product Specifications

	DIMENSIONS (W x H x D)	PRODUCT WEIGHT	LOAD CAPACITY	FINISH	AVAILABLE COLORS
ECMUA	13.04" x 32.50"-54.50" x 8.29" (331 x 826-1384 x 210mm)	32.2lb (14.6kg)	175lb (79.4kg)	Outdoor Powder Coated	Black

Package Specifications

	PACKAGE SIZE (W x H x D)	PACKAGE SHIP WEIGHT	PACKAGE UPC CODE	PACKAGE CONTENTS	UNITS IN PACKAGE
ECMUA	37.50" x 14.60" x 6.10" (953 x 371 x 155mm)	37.2lb (16.9kg)	735029344421	Mount, Mounting Hardware and Fasteners	1

Accessories

EPT650: Outdoor Universal Tilt Wall Mount for 32" to 75" TVs

Compatible with

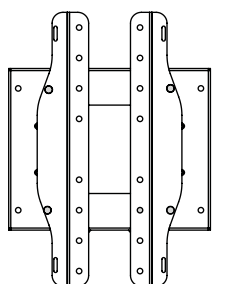
55" Neptune™ Shade Series Outdoor TV
65" Neptune™ Shade Series Outdoor TV
75" Neptune™ Shade Series Outdoor TV

55" Neptune™ Partial Sun Outdoor Smart TV
65" Neptune™ Partial Sun Outdoor Smart TV
75" Neptune™ Partial Sun Outdoor Smart TV

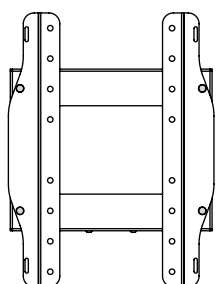
Peerless-AV® Xtreme™ High Bright Outdoor Displays, XHB554 (55") and XHB653* (65")

*With EPT650 accessory

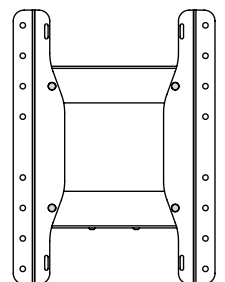
All dimensions = inch (mm)



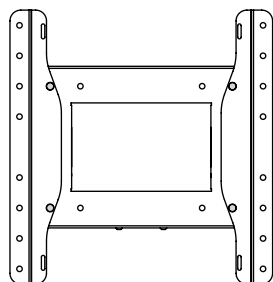
**VESA 100x100
ADAPTOR DETAIL**



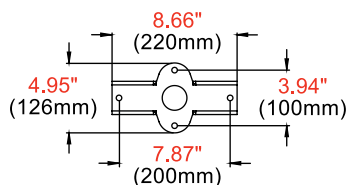
**VESA 200x100
VESA 200x200
ADAPTOR DETAIL**



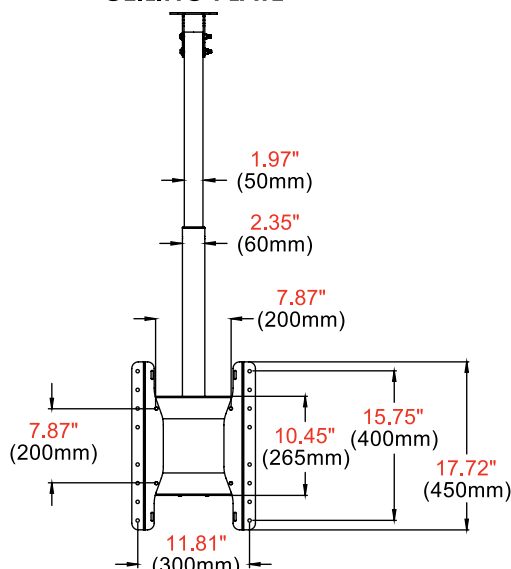
**VESA 300x200
VESA 300x300
ADAPTOR DETAIL**



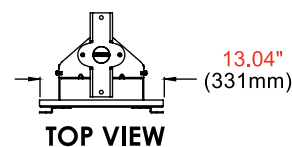
**VESA 400x200
VESA 400x300
VESA 400x400
ADAPTOR DETAIL**



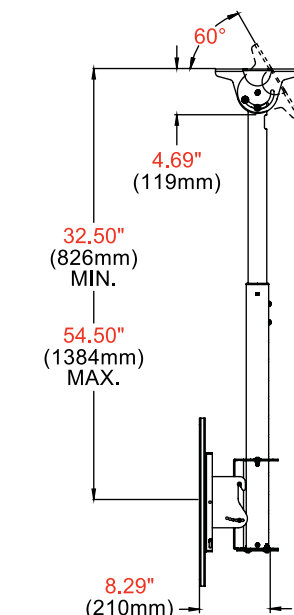
CEILING PLATE



FRONT VIEW



TOP VIEW



SIDE VIEW +20°/-5° TILT

Visit peerless-av.com to see the complete line of AV solutions from Peerless-AV, including outdoor displays, kiosks, display mounts, projector mounts, carts/stands, and a full assortment of accessories.

Peerless-AV
2300 White Oak Circle
Aurora, IL 60502 USA

**(800) 865-2112
(630) 375-5100**

Peerless-AV EMEA
Unit 2 Curo Park
Frogmore, St. Albans
Hertfordshire, AL2 2DD
United Kingdom

+44 (0) 1923 200100

Peerless-AV B.V.
Papendorpseweg 75
3528 BJ Utrecht
The Netherlands

+31 (0) 70 770 8037

Peerless-AV Latin America
Av. de las Industrias 413
Parque Industrial Escobedo
General Escobedo, N.L.,
México, 66062

+52 (81) 8384-8300

peerless-AV®
Driving Technology Through Innovation