

# 2022 | PTZ Camera Lineup



MODEL	AW-UE4	AW-HE20	AW-UE20	AW-UE40	AW-UE50	AW-UE80	AW-UE100	AW-HE145	AW-UE150	AW-HR140
Series	Pro	Pro	Pro	Premium	Premium	Premium	Platinum	Platinum	Platinum	Outdoor
Format	4K/30p	Full HD	4K/30p	4K/30p	4K/30p	4K/60p	4K/60p	Full HD	4K/60p	Full HD
Color	Black (K) or White (W)	Black (K) or White (W)	Black (K) or White (W)	Black (K) or White (W)	Black (K) or White (W)	Black (K) or White (W)	Black (K) or White (W)	Black (K) or White (W)	Black (K) or White (W)	Silver
<b>GENERAL</b>										
Sensor	1/2.5" MOS	1/2.8" x 1MOS	1/2.8" x 1MOS	1/2.5"-type x 1MOS	1/2.5"-type x 1MOS	1/2.5"-type x 1MOS	1/2.5" MOS	1" MOS	1" MOS	1/2.86" 3MOS
Optical Zoom	—	12x	12x	24x	24x	24x	24x	20x	20x	20x
i.Zoom	—	12x	12x	28x UHD, 36x FHD	28x UHD, 36x FHD	28x UHD, 36x FHD	28x UHD, 36x FHD	32x	32x	—
Digital Zoom	4x	—	—	1.4x, 2x	1.4x, 2x	1.4x, 2x	10x	10x	10x	10x
FOV (Horizontal)	111°	71°	71°	74.1°	74.1°	74.1°	74.1° (W) 3.3° (T)	75.1° (W) 4.0° (T)	75.1° (W) 4.0° (T)	60.2° (W) 3.3° (T)
Focus	Auto/Manual	Auto/Manual, OTAF	Auto/Manual, OTAF	Auto/Manual, OTAF	Auto/Manual, OTAF	Auto/Manual, OTAF	Auto/Manual	Auto/Manual	Auto/Manual	Auto/Manual
Horizontal Resolution	1400 Lines	—	—	UHD: 1500 TV Typ (Center area) FHD: 1000 TV Typ (Center area)	UHD: 1500 TV Typ (Center area) FHD: 1000 TV Typ (Center area)	UHD: 1500 TV Typ (Center area) FHD: 1000 TV Typ (Center area)	1400 Lines	1000 Lines	1600 Lines	1000 Lines
Minimum Illumination	4 lx*	—	—	3 lx (F1.8, 59.94p, 50IRE, 42dB, without accumulation)	3 lx (F1.8, 59.94p, 50IRE, 42dB, without accumulation)	3 lx (F1.8, 59.94p, 50IRE, 42dB, without accumulation)	3 lx*	2 lx*	2 lx*	2 lx*
Gain	0 dB to 42 dB	Auto, 0 to 42 dB	Auto, 0 to 42 dB	Auto, 0 dB to 36 dB (Super gain: 37 dB to 42 dB)	Auto, 0 dB to 36 dB (Super gain: 37 dB to 42 dB)	Auto, 0 dB to 36 dB (Super gain: 37 dB to 42 dB)	0 dB to 36 dB (Super Gain +37dB - +42dB)	0 dB to 36 dB	0 dB to 36 dB	0 dB to 42 dB
Control	IP, IR	IP, IR, RS422, RS232	IP, IR, RS422, RS232	IP, IR, RS422	IP, IR, RS422	IP, IR, RS422	IP, IR, RS422	IP, IR, RS422	IP, IR, RS422	IP, RS422
Power	PoE or USB	with included power supply, PoE+	with included power supply, PoE+	with included power supply, PoE+	with included power supply, PoE+	with included power supply, PoE+	with included power supply, PoE++ or DC/12V	PoE++ or XLR	PoE++ or XLR	PoE++ or XLR
Installation	Tripod, Wall, Ceiling	Tripod, Wall, Ceiling	Tripod, Wall, Ceiling	Tripod, Wall, Ceiling	Tripod, Wall, Ceiling	Tripod, Wall, Ceiling	Tripod, Wall, Ceiling	Tripod, Wall, Ceiling	Tripod, Wall, Ceiling	Wall, Ceiling
Mount Position	Ceiling or Desktop	Ceiling or Desktop	Ceiling or Desktop	Ceiling or Desktop	Ceiling or Desktop	Ceiling or Desktop	Ceiling or Desktop	Ceiling or Desktop	Ceiling or Desktop	Ceiling or Desktop
<b>PTZ</b>										
Pan Range	±175° (manual)	±170°	±170°	±175°	±175°	±175°	±175°	±175°	±175°	±175°
Tilt Range	±25° (manual)	-30° to 90°	-30° to 90°	-30° to 90°	-30° to 90°	-30° to 90°	-30 to 210°	-30 to 210°	-30 to 210°	-30 to 210°
Pan/Tilt Speed	—	TBD	TBD	Up to 180 deg/sec	Up to 180 deg/sec	Up to 180 deg/sec	±175°-30°-+210°	~180°/s	~180°/s	60°/s
Operation Noise	—	NC40 or less	NC40 or less	NC25 or less	NC25 or less	NC25 or less	NC35 or Less	NC35 or Less	NC35 or Less	NC45 or Less
<b>VIDEO OUTPUT</b>										
LAN	H.264, RTSP, RTMP/S, MJPEG	H.264, HEVC, RTMP/S, MJPEG	H.264, HEVC, RTMP/S, MJPEG	H.264, HEVC, RTSP, RTMP/S, SRT, NDI HX V2, MPEG2-TS over UDP, MJPEG	H.264, HEVC, RTSP, RTMP/S, SRT, NDI HX V2, MPEG2-TS over UDP, MJPEG	H.264, HEVC, RTSP, RTMP/S, SRT, High Bandwidth NDI, NDI HX V2, MPEG2-TS over UDP, MJPEG	H.264, HEVC, RTSP, RTMP/S, SRT, High Bandwidth NDI, NDI HX V2, MPEG2-TS over UDP, MJPEG	H.264, HEVC, RTSP, RTMP/S, SRT, High Bandwidth NDI, NDI HX V2, MJPEG	H.264, HEVC, RTSP, RTMP/S, SRT, High Bandwidth NDI, NDI HX V2, MPEG2-TS over UDP, MJPEG	H.264, HEVC, RTSP, RTMP/S, SRT, High Bandwidth NDI, NDI HX V2, MPEG2-TS over UDP, MJPEG
NDI	—	—	—	NDI HX Upgradable	NDI HX Upgradable	Full NDI / NDI HX Included	Full NDI / NDI HX Included	NDI HX Upgradable	NDI HX Upgradable	—
Optical Fiber	—	—	—	—	—	—	—	—	**SFP+ module purchased separately	—
12G-SDI	—	—	—	—	—	—	Yes	—	Yes	—
3G-SDI	—	Yes	Yes	—	Yes	Yes	Yes	Yes	Yes	Yes
HDMI	Yes	Yes	Yes	Yes	Yes	Yes	Yes	Yes	Yes	—
USB / UVC	Yes	Yes	Yes	Yes	Yes	—	—	—	—	—
<b>CONTROL</b>										
Browser (PC/Mac/Mobile) via IP	Yes	Yes	Yes	Yes	Yes	Yes	Yes	Yes	Yes	Yes
Serial	—	RS-232/RS-422	RS-232/RS-422	RS-422	RS-422	RS-422	RS-422	RS-422	RS-422	RS-422
USB Virtual Driver	Yes	Yes	Yes	Yes	Yes	Yes	Yes	Yes	Yes	Yes
Auto Tracking* / Auto Tracking Server*	AW-SF100 / AW-SF200	—	—	AW-SF100 / AW-SF200	AW-SF100 / AW-SF200	AW-SF100 / AW-SF200	AW-SF100 / AW-SF200	AW-SF100 / AW-SF200	AW-SF100 / AW-SF200	AW-SF100 / AW-SF200
IR Remote Control	AW-RM50	AW-RM50	AW-RM50	AW-RM50	AW-RM50	AW-RM50	AW-RM50	AW-RM50	AW-RM50	—
Compact Controller	AW-RP60	AW-RP60	AW-RP60	AW-RP60	AW-RP60	AW-RP60	AW-RP60	AW-RP60	AW-RP60	AW-RP60
Full-Size Controller	AW-RP150	AW-RP150	AW-RP150	AW-RP150	AW-RP150	AW-RP150	AW-RP150	AW-RP150	AW-RP150	AW-RP150
Remote Operation Panel	—	—	—	AK-HRP1000*, AK-HRP1005*, AK-HRP1015, AK-HRP250*, AK-HRP1010*	AK-HRP1000*, AK-HRP1005*, AK-HRP1015, AK-HRP250*, AK-HRP1010*	AK-HRP1000*, AK-HRP1005*, AK-HRP1015, AK-HRP250*, AK-HRP1010*	AK-HRP1000*, AK-HRP1005*, AK-HRP1015, AK-HRP250*, AK-HRP1010*	AK-HRP1000*, AK-HRP1005*, AK-HRP1015, AK-HRP250*, AK-HRP1010*	AK-HRP1000*, AK-HRP1005*, AK-HRP1015, AK-HRP250*, AK-HRP1010*	AK-HRP1000*, AK-HRP1005*, AK-HRP1015, AK-HRP250*, AK-HRP1010*
Software Controller (Windows)	PTZ Control Center, AW-SF300	PTZ Control Center, AW-SF300	PTZ Control Center, AW-SF300	PTZ Control Center, AW-SF300	PTZ Control Center, AW-SF300	PTZ Control Center, AW-SF300	PTZ Control Center, AW-SF300	PTZ Control Center, AW-SF300	PTZ Control Center, AW-SF300	PTZ Control Center, AW-SF300
<b>FEATURES</b>										
IP Live Preview / Output	Yes	Yes	Yes	Yes	Yes	Yes	Yes	Yes	Yes	Yes
Image Stabilization	—	EIS	EIS	OIS	OIS	OIS	OIS	OIS	OIS	OIS/DIS
Night Mode (for IR)	—	—	—	Yes	Yes	Yes	Yes	Yes	Yes	Yes
Dynamic Range Stretch (DRS)	Yes	Yes	Yes	Yes	Yes	Yes	Yes	Yes	Yes	Yes
Audio Input / Embedding	Yes	Yes	Yes	Yes	Yes	Yes	Yes	Yes	Yes	Yes
Color Temperature Adjustment	Yes	Yes	Yes	Yes	Yes	Yes	Yes	Yes	Yes	Yes
Presets	Up to 100	Up to 100	Up to 100	Up to 100	Up to 100	Up to 100	Up to 100	Up to 100	Up to 100	Up to 100
High Dynamic Range (HDR)	—	—	—	—	—	—	—	(HLG)	(HLG)	—
Streaming protocols	RTSP, RTMP, RTMPS	RTSP, RTMP, RTMPS	RTSP, RTMP, RTMPS	RTSP, RTMP, RTMPS, SRT	RTSP, RTMP, RTMPS, SRT	RTSP, RTMP, RTMPS, SRT	RTSP, RTMP, RTMPS, SRT	RTSP, RTMP, RTMPS, SRT	RTSP, RTMP, RTMPS, SRT	—
Web protocols	HTTP	HTTP	HTTP	HTTP	HTTP	HTTP	HTTP, HTTPS, NTP, UPnP	HTTP, HTTPS, NTP, UPnP	HTTP, HTTPS, NTP, UPnP	HTTP, HTTPS, NTP, UPnP, SNMP
Direct Drive System	—	—	—	Yes	Yes	Yes	Yes	—	—	—
Fanless Design	Yes	—	—	Yes	Yes	—	—	—	—	—
Built-in ND Filters	—	—	—	—	—	1/4, 1/16, 1/64	1/4, 1/16, 1/64	1/4, 1/16, 1/64	1/4, 1/16, 1/64	1/8, 1/64, Through
Genlock	—	—	—	—	—	Yes	Yes	Yes	Yes	Yes
Advanced Color Adjustment	—	—	—	Yes	Yes	Yes	Yes	Yes	Yes	Yes
Digital Noise Reduction (DNR)	Yes	Yes	Yes	Yes	Yes	Yes	Yes	Yes	Yes	Yes
Position Tracking for AR/VR	—	—	—	—	—	(FreeD)	(FreeD)	—	(FreeD)	—
HD Cropping in 4K Mode	—	—	—	—	—	—	—	—	—	—
High-Speed Pan/Tilt Mode	—	—	—	Yes	Yes	Yes	Yes	Yes	Yes	—
V-LOG Support	—	—	—	—	—	—	—	—	Yes	—
<b>OPTIONS &amp; ACCESSORIES</b>										
Wall Mount (Black) / Wall Mount (White)	FEC-4WMK / FEC-4WMM	FEC-40WMW / FEC-40WMK	FEC-40WMW / FEC-40WMK	FEC-40WMW / FEC-40WMK	FEC-40WMW / FEC-40WMK	FEC-40WMW / FEC-40WMK	FEC-100WMW / FEC-100WMK	FEC-150GMW / FEC-150GMK	FEC-150GMW / FEC-150GMK	FEC-HR140WMRBB
Ceiling Mount	Included	Included	Included	Included	Included	Included	Included	Included	Included	Built-in
5 Year Warranty + Accident Protection	AV-SVCEXTWAR5YB	AV-SVCEXTWAR5YB	AV-SVCEXTWAR5YB	AV-SVCEXTWAR5YB	AV-SVCEXTWAR5YB	AV-SVCEXTWAR5YB	AV-SVCEXTWAR5YC	AV-SVCEXTWAR5YB	AV-SVCEXTWAR5YB	AV-SVCEXTWAR5YB
On-Site Training	AV-SVCSRENGFDS	AV-SVCSRENGFDS	AV-SVCSRENGFDS	AV-SVCSRENGFDS	AV-SVCSRENGFDS	AV-SVCSRENGFDS	AV-SVCSRENGFDS	AV-SVCSRENGFDS	AV-SVCSRENGFDS	AV-SVCSRENGFDS
MSRP (BASE)	\$1,200	\$1,850.00	\$2,250.00	\$3,150.00	\$3,650.00	\$5,850.00	\$8,350.00	\$10,500	\$11,400	\$17,950

\*At 59.94p; F No. (at WIDE & OPEN); MAX Gain; Chart is Gray Scale Test Chart (reflectance = 89.9 %); and Luminance Level at the white filed is 50IRE.

\*\*SFP+ module purchased separately. Please reference brochure for recommended models.

\*\*\*AK-HRP1015 firmware upgrade may be required.

†Power supply not included with this model. NDI is a registered trademark of NewTek, Inc.

## FULL-SIZE CONTROLLER

### AW-RP150

Control up to 200 PRO PTZ cameras with this full-size camera controller. Quickly setup and access camera presets and complex image controls and easily control your cameras with a top-of-the-line joystick, ensuring smooth camera movements.

- Large 7" LCD Touchscreen w/Touch Focus Functionality
- Camera Monitoring via HD-SDI
- Industry Approved Ergonomic Design
- 3D Joystick for Single-Handed Operation
- Simplified PTZ Camera Presets & Tracing Memory
- Streamlined Multicamera Deployment
- Power via PoE+ or XLR<sup>1</sup>



## COMPACT CONTROLLER

### AW-RP60

Control up to 200 PRO PTZ cameras, with this full-featured controller. A 3.5" LCD screen displays menus & key camera information such as iris, zoom and focus. Easily manage 100 PTZ presets.

Power via PoE+ or XLR<sup>1</sup>



## NEW UPDATES! WINDOWS SOFTWARE

### PTZ Control Center

Use the free PTZ Control Center software to set-up and control your camera on a Windows laptop or desktop PC. With this software, you can utilize your mouse, your touch-screen, or your choice of compatible joysticks or game controllers for camera control.

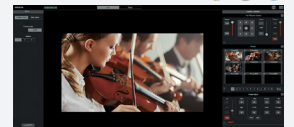
- Software application that allows for remote operation of Panasonic Professional PTZ cameras via your PC, allowing for control via a standard keyboard/mouse, touchscreen, or a compatible USB joystick / game controller
- Allows for centralized management of multiple PTZ cameras
- Provides simultaneous control of multiple cameras, allowing adjustment of Focus, Iris, Gain, White Balance, Shutter & ND Filters
- Add up to 9 camera presets with thumbnails



Works on Windows 7, Windows 8.1 & Windows 10

## BUILT-IN WEB BROWSER

When your camera is on the network, you can set-up and control it via a web browser on a PC, Mac or mobile device such as an iPhone, iPad or Android device. This is a free, yet powerful option for camera control and setup.



## AUTO TRACKING SOFTWARE / SERVER

### AW-SF100 / AW-SF200

State-of-the-art auto tracking software options for Panasonic PTZ remote cameras. Dramatically simplifies your remote camera for easier single-person operation. Using a combination of tracking methods, including template matching, facial detection and deep learning, compatible Panasonic PTZ cameras can be automated to keep track of speakers or lecturers without the need for a dedicated camera operator.

- AW-SF100 (stand-alone software) / AW-SF200 (server)



Works on Windows 7, Windows 8.1 & Windows 10

## NEW

## VISUAL PRESET SOFTWARE

### AW-SF300

AW-SF300 enables the management and control of visual presets through an intuitive GUI interface incorporating photos and layout diagrams assigned by the user. Simply set your presets, then touch the area on screen to move the selected cameras to that area.



## REMOTE OPERATION PANEL

### AK-HRP250 / AK-HRP1010

Ideal for multi-camera shoots that incorporate PTZ and non-PTZ cameras, these advanced remote control panels allow for accelerated fine-tuning of camera color and shading.



## Robotic Camera System

The first robotic system with tracks to be fully integrated with Panasonic PTZ cameras. The direct system integration allows for full control of the dolly, column and the camera from a single controller.



## Easy IP

Featuring a new GUI, Easy IP is a free proprietary setup tool that accompanies Panasonic PTZ cameras. The camera picture display has an additional column for the camera list, making Easy IP quite versatile. Couple that with firmware updates, ID signal and auto IP setup features and the PTZ camera becomes even more powerful.

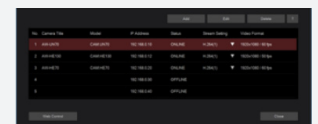


## DRIVER SOFTWARE

### PTZ Virtual USB Driver

With the free PTZ Virtual USB Driver software, you can convert select Panasonic PTZ cameras on your network into super web cams.

- Allows you to use select Panasonic professional PTZ cameras on your network as USB cameras
- Up to 5 cameras can be registered
- Automatic camera discovery and network settings
- Compatible with all PTZ models as well as the AG-UMR20, AG-UCK20, AG-CX10 and AG-CX350.



Works on Windows 7, Windows 8.1 & Windows 10