

Attachment for Ceiling Mount Bracket

This attachment is required when using an existing ceiling mount bracket for the PT-DZ8700, PT-DZ110X or other 3-chip DLP™ projector.

**NOTE:** Please use the lens only on the specified Panasonic 3-chip DLP™ projector.

**Specifications**

Dimensions (W × H × D):	380 × 50 × 443 mm (14-31/32" × 1-31/32" × 17-7/16")
Weight:	2.9 kg (6.4 lbs)
Applicable ceiling mount brackets:	ET-PKD100H/PKD100S/PKD77H/PKD75S/PKD56H/PKD55S

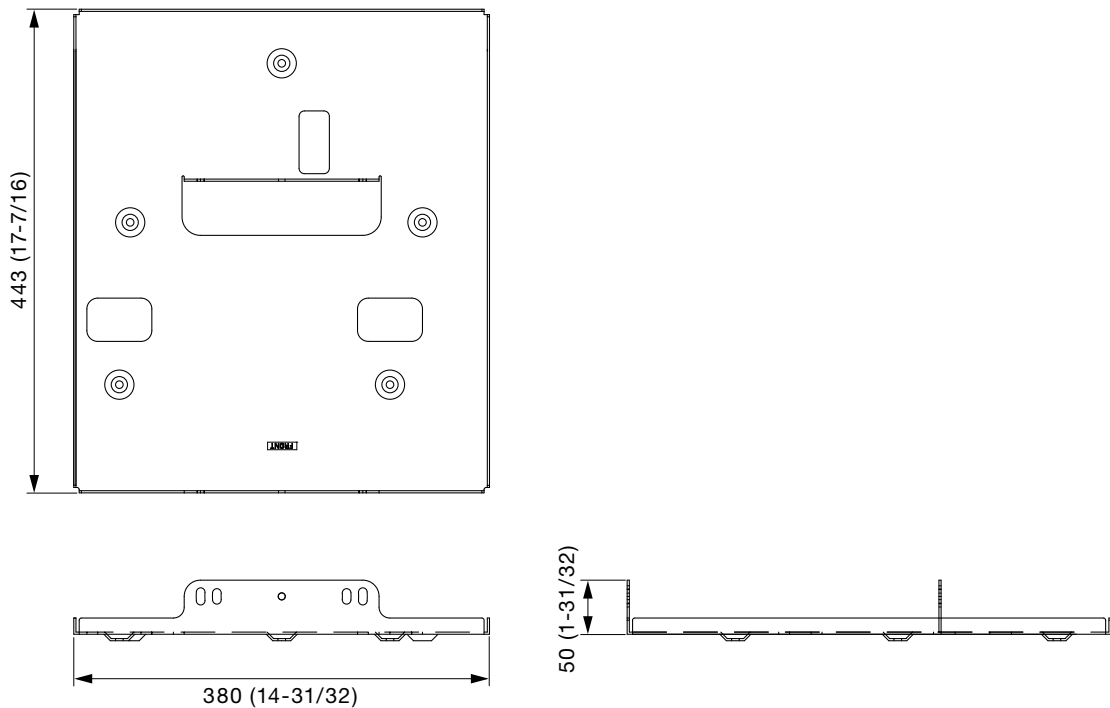
DLP and the DLP logo are trademarks of Texas Instruments.  
Weights and dimensions shown are approximate. Specifications subject to change without notice.

<b>Parts</b>	Attachment for ceiling mount bracket . . . . . 1
	Washer-fitted hexagonal bolt (M6 × 16) . . . . . 5

**Caution:**

- Mounting should be done by a qualified technician.
- Make sure that the mounting (ceiling) area has sufficient strength.
- Read the enclosed mounting instructions thoroughly before starting.
- When the product is no longer going to be used, have it disposed of quickly by a professional disposal service.
- Do not use an electric screwdriver or impact driver to tighten screws. (Use a torque driver or similar tool.)

**Dimensions**



unit : mm (inch)  
**NOTE:** This illustration is not drawn to scale.

Dimensions

Illustration shows the ET-PAD310 and ET-PKD100H/  
PKD77H/PKD56H attached to the projector.

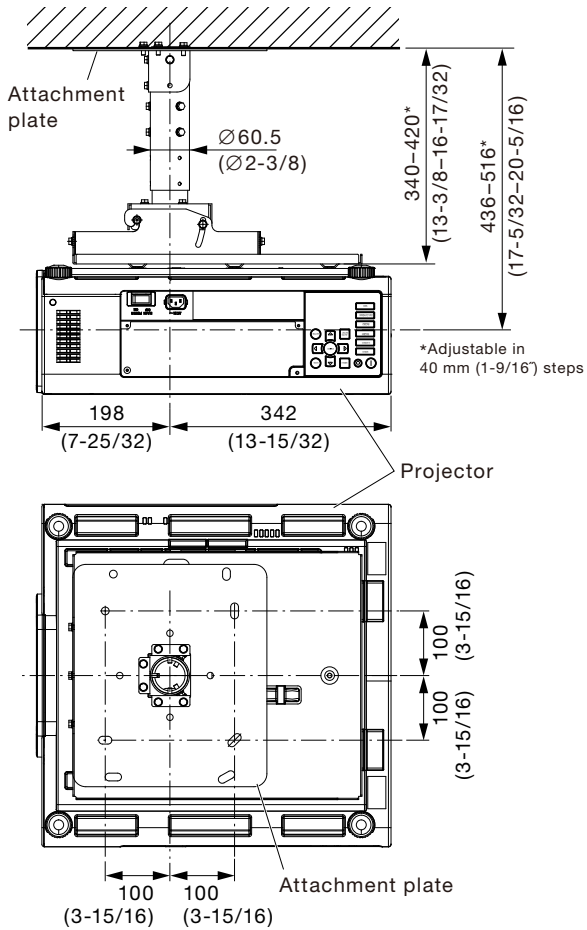
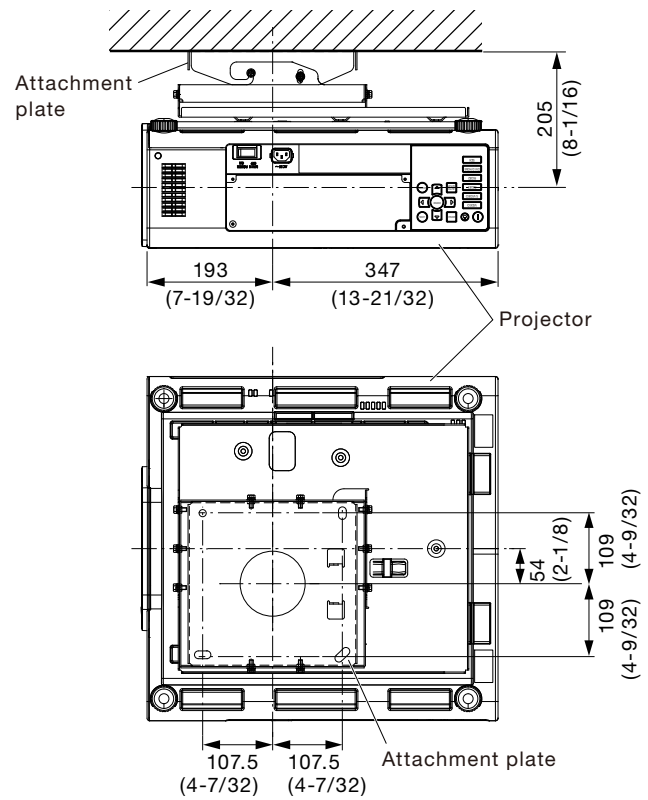


Illustration shows the ET-PAD310 and ET-PKD100S/  
PKD75S/PKD55S attached to the projector.



unit : mm (inch)  
NOTE: This illustration is not drawn to scale.