



newline

CONNECT. CREATE. COLLABORATE.

[www.newline-interactive.com](http://www.newline-interactive.com)



# newline

WE HELP YOU  
**MAKE AN IMPACT**  
IN THE CLASSROOM

Newline creates the classroom tools of the future. From interactive flat panels that keep students engaged through the lesson, to digital tools that enhance your favorite software, Newline reinvents active learning and classroom communication.

*CONNECT. CREATE. COLLABORATE.*

## WHY NEWLINE?

We believe that truly successful and innovative products should be easy for anyone to use. Each product Newline has introduced follows our principle of simplicity, making each interactive flat panel user-friendly and completely non-proprietary.

Over the years, our goal hasn't changed. We are dedicated to providing solutions for schools that make teaching and engaging their students easier. From our award-winning interactive displays to our innovative whiteboarding software, our products combine cutting-edge technology with simplicity, making every solution easy and intuitive.

### Founded to develop interactive solutions that are:

#### **Easy for anyone to walk up and use.**

If a solution isn't easy to use, we won't bring it to the market. All of our products are designed with you in mind and it is the key to our success.

#### **Completely Non-Proprietary**

We work in your world. No matter what software or hardware you want to use, our solutions give you the freedom to interact how you choose.



# RS+ Series

## BRING LEARNING TO LIFE.

Capture student interest with the improved RS+ Series. Get your students actively involved in their learning on an 4K ultra-high definition interactive flat panel that lets them work together on the same screen. Bring your lessons to life with a vibrant and vivid focal point for your classroom.

- Superior 4K image quality that lights up your classroom
- Built-in file navigation system with cloud access
- Customizable interface with time-saving shortcuts
- Object recognition helps you work faster



Always Free Software



Compatible with All Devices



Easy Wireless Screen Sharing



Access to the Cloud



Customizable Interface



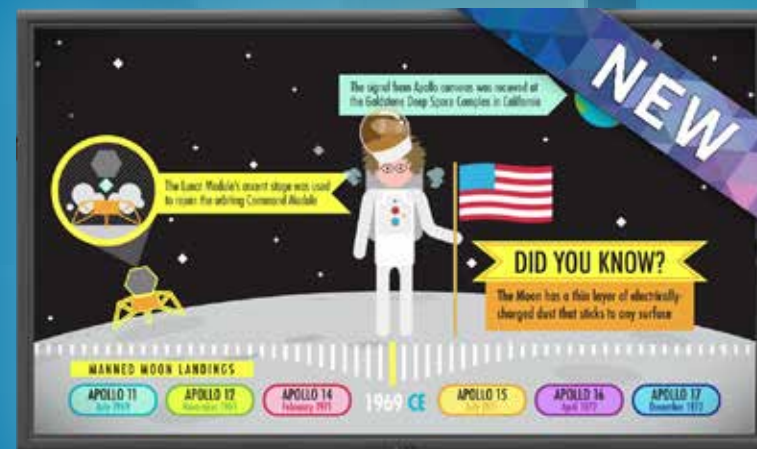
Remote Management



Embedded Android 8.0 OS



Object Recognition



Superior Image Quality



Remote Management



Easy Wireless Screen Sharing



Non-Touch



Access to the Cloud



Always Free Software



Control by Remote



Device Compatibility

# NT Series

## STREAMLINE YOUR CLASSROOM

Bring vivid innovations created with your needs in mind. Streamline your lessons by focusing on just the tools you need to make an impact with the NT Series, a non-touch display that brings your presentations to life. Don't pay more for features that you won't use.

- Non-Touch 4K display
- Embedded wireless casting from any device
- Built-in file viewer with Cloud access
- Controlled by remote or physical buttons on the display

### Product Part Numbers

65" - TT-6519RS    86" - TT-8619RS  
75" - TT-7519RS    98" - TT-9819RS

### Product Part Numbers

85" - EPR7A085NT-000  
98" - EPR7A098NT-000

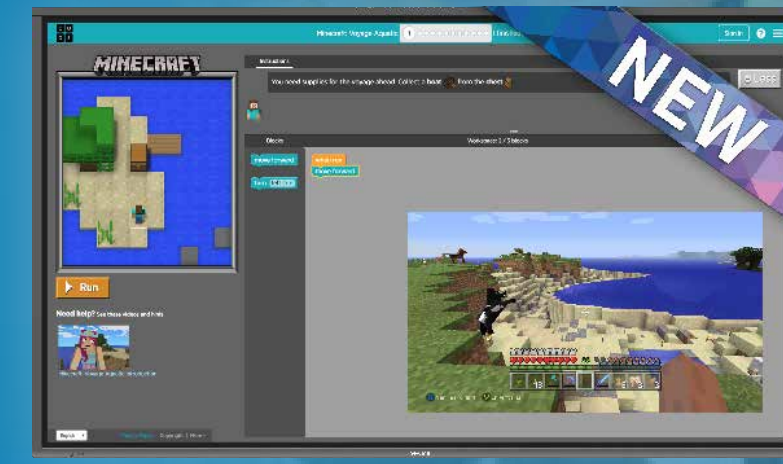
# X Series

# IP Series

## EDUCATION WITH ENDLESS POSSIBILITIES

Take your lessons to the next level with the new and improved X Series. Along with a sleeker, design, a built-in 4K camera, and a Linux-based OS, the new X Series brings you an easy way to contact to experts all over the world without compromising your school's network security.

- Built-in 4K camera and microphones for an all-in-one design
- On-board computer included with each display
- Be heard with noise cancellation and echo reduction
- Linux-based OS keeps your network and data more secure



## OPTIMIZED FOR NETWORK SECURITY

The latest wave in technology brings you more effective communication with stronger network security. Connect your students to the world without comprising sensitive information. IP Series brings you better lessons in an all-in-one package that captivates attention.

- Optically-bonded Ultra-High Def (4K) display
- Linux-based operating system provides better security
- Capacitive touch interface gives a smooth writing experience
- Remote management system built into the display



Built-in 4K Camera



Noise Cancellation & Echo Reduction



OPS Computer Included



Always Free Software



Easy Wireless Screen Sharing



Access to the Cloud



Linux-based OS



Compatible with all Devices



Always Free Software



Remote Management



Capacitive Touch Interface



Linux-based OS



Compatible with All Devices



Object Recognition



Easy Wireless Screen Sharing



Access to the Cloud

## Product Part Numbers

- 65" - TT-6519IP
- 75" - TT-7519IP
- 86" - TT-8619IP

# VN Series

# Model Specs

CRISP. CLEAR. ACCURATE.

Take your lessons to the next level and ensure engagement and interest from your students. The VN Series captures student attention on a touch display with an improved viewing angle and best in class image quality with our unique optical bonding technology.



- Optically bonded 4K display
- Smooth and intuitive writing experience
- Multiple I/O ports make connecting easy
- Switch between pen tools with object recognition

- Always Free Software
- Compatible with All Devices
- Optically Bonded Screen
- Slim Frame Design
- Access to the Cloud
- Easy Wireless Screen Sharing
- Object Recognition
- Superior Image Quality

	RS+	NT	X	IP	VN
Non-Proprietary	✓	✓	✓	✓	✓
Easy to Use	✓	✓	✓	✓	✓
Ultra-High Definition (4k)	✓	✓	✓	✓	✓
Always Free Software	✓	✓	✓	✓	✓
Access to the Cloud	✓	✓	✓	✓	✓
Wireless Casting	✓	✓	✓	✓	✓
Object Recognition	✓		✓	✓	✓
Cameras & Microphones			✓		
OPS Included			✓		
Remote Display Management	✓	✓	✓	✓	✓
Android-based OS	✓		✓		✓
Linux-based OS			✓	✓	
Touch Interface	✓		✓	✓	✓

### Product Part Numbers

- 65" - TT-6518VN
- 75" - TT-7518VN
- 86" - TT-8618VN

# newline SOFTWARE SOLUTIONS

## SOFTWARE TO TRANSFORM YOUR CLASSROOM

Newline Interactive offers several software solutions seamlessly integrated into the full range of our superior interactive displays. These intelligent tools help you connect with your students better, smarter, and faster.

Built for the digital age, these solutions allow you to easily start your lessons and get more students actively involved in class. Wirelessly cast mobile screens to the display, broadcast content to everyone's devices, whiteboard and collaborate with students in real-time, apply mass notifications and centrally manage all of the displays on your network.

With Newline at the heart of every classroom, all of your lessons are raised to a higher level of communication and student engagement.

Compatible with:      



## newline **CAST**

### WIRELESS SCREEN SHARING

Easily share your screen from any device. Newline Cast is simple to use, with one click you can present wirelessly from any network. Control and annotate from the Newline display or from your own device all with the freedom to walk around the room.

## newline **BROADCAST**

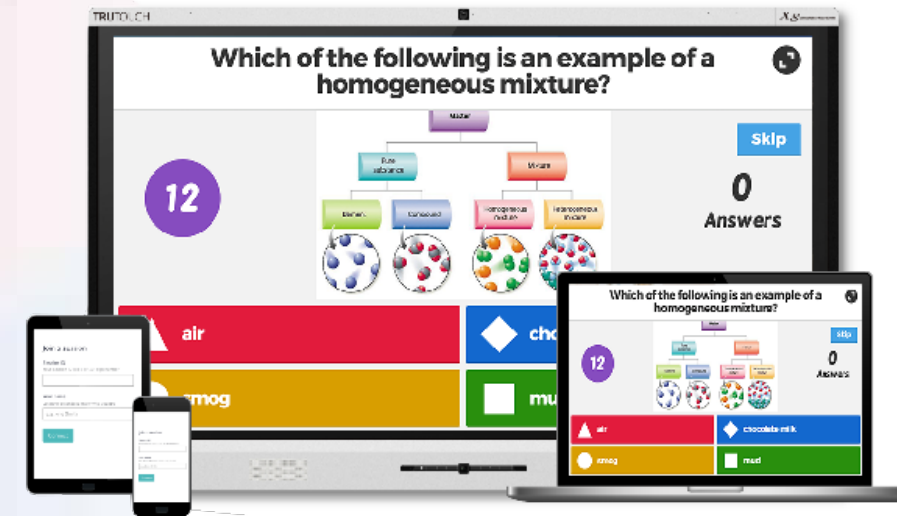
### CONTENT SHARING TO LARGE CLASSES

Tap one button and share your display screen with the students who may not be able to see the display as clearly. They can follow along with the lesson on their own personal screen, reducing eyestrain and making sure everyone gets the most out of the day's lesson.

## newline **DISPLAY MANAGEMENT**

### REMOTE DISPLAY MANAGEMENT

Centrally manage your Newline interactive displays in any location through a secure and dedicated web portal. Easily manage and deploy apps, configure Newline display settings, use the digital signage features or broadcast messages to all displays.



# newline COMPUTER SOLUTIONS

## EXPAND YOUR IMPACT

Education is ever-changing. Support your campus and classrooms with computers that empower your interactive solutions to make teaching easier and learning more engaging.

## OPS MODELS AND SPEC OVERVIEW

	Standard 4K	Good 4K	Better 4K	Best 4K
Part Number	EPR8A65000-000	EPR8A64000-000	EPR8A67160-000	EPR8A64VPU-000
Used With:	X5, X6, X7, X8, X9 VN RS	X5, X6, X7, X8, X9 VN RS	X5, X6, X7, X8, X9 VN RS	X5, X6, X7, X8, X9 VN RS
CPU	i5-6200U - 2.40GHz	i7-7500U - 2.90GHz	i7-7500U - 2.90GHz	i7-7600U - 2.9GHz
GPU	Intel HD Graphics 520	Intel HD Graphics 620	Intel HD Graphics 620	Intel HD Graphics 620
RAM	4GB	8GB	16GB	8GB
Hard Disk	128GB SATA3 SSD	256GB SATA3 SSD	256GB SATA3 SSD	256GB SATA3 SSD
Intel Unite Ready	-	-	-	Yes
USB 2.0	2	2	2	2
USB 3.0	2	2	2	2
LAN	1	1	1	1
HDMI Out	1	1	1	1
Microphone In	1	1	1	1
Line Out	1	1	1	1
Built-in WiFi	802.11b/g/n/ac	802.11b/g/n/ac	802.11b/g/n/ac	802.11b/g/n/ac
OS	Win 10 Pro 64bit (other OS optional)	Win 10 Pro 64bit (other OS optional)	Win 10 Pro 64bit (other OS optional)	Win 10 Pro 64bit (other OS optional)
RAM Upgrades	Up to 16GB	Up to 16GB	n/a	Up to 16GB
Storage Upgrades	Up to 1TB SSD	Up to 1TB SSD	Up to 1TB SSD	Up to 1TB SSD

### On-Board Computer (OPS)

#### PLUG AND PLAY

Fill your display's OPS slot with an on-board computer powered by Intel that brings you all the power of a desktop computer. No more worrying about cables or going through the steps of connecting a laptop or desktop directly to the display.



### Android Mini-Computer

#### ACCESS TO THOUSANDS OF APPS

Connect the X10D to your touch display and download your favorite apps from the built-in Google Play Store. With access to over a million apps, the X10D brings you the programs you need right to your display in an easy to use mini-computer.





# newline MOBILE STAND SOLUTIONS

## EDUCATION WITH MOBILITY

Take your Newline interactive display anywhere on campus with a Mobile Stand. A mobile stand leaves you free to place the display anywhere in the room you like, or take it from classroom to classroom.

### newline Mobile Stand

Adjust the height of your display so that your students can touch and interact directly with the screen.



SKU: EPR8A50500-SQR\*  
\*Fits all Panel Sizes

### newline TRULIFT Mobile Stand

Motorized stands let you adjust your display height with a remote or electronic option, giving you easy visibility.



SKU: EPR8A60060-000\*  
\*Fits all Panel Sizes

### MOORECO iTeach Stand

With a robust mobile stand, move your display around your classroom or campus with ease.



SKU: EPR8A70080-000\*  
\*Fits all Panel Sizes

### MOORECO iTeach Motorized Stand

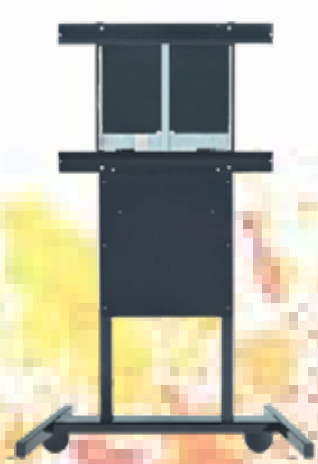
Control the height of the display on a motorized mobile stand with a convenient electronic lift option.



SKU: EPR8A70070-000\*  
\*Fits all Panel Sizes

### BalanceBox® Mobile Stand

This mobile stand's compact design lets you move your interactive display up and down with just your fingertips.



SKU: EPR8A88555-000°  
SKU: EPR8A88666-000†  
°Fits 55" - 80" Panels  
†Fits 80" - 98" Panels

# newline WALL MOUNT SOLUTIONS

## EDUCATION WITH MOBILITY

Mount your display to the front of your classroom with a wall mount. Sturdy wall mounts let you keep any size panel easily visible on the front of your room.

### newline Wall Mount

Keep your display sturdy on the wall with the standard Newline wall mount.

The light, compact design makes it easy to install while providing strength and durability.



SKU: EPR8A50600-000  
\*Fits 55" - 86" Panels

SKU: EPR8A50980-000  
\*Fits 98" Panels

### BalanceBox® Wall Mount

Move the display up and down with its effortless high-low adjustment.

Easily mount your display to the front of the classroom and keep it locked in place for daily use.



SKU: EPR8A88700-000  
\*Fits 55" - 80" Panels

SKU: EPR8A88900-000  
\*Fits 80" - 98" Panels

# SERVICE, WARRANTY, & TRAINING

Newline's commitment to quality and your organization's success extends past the initial purchase. We provide:

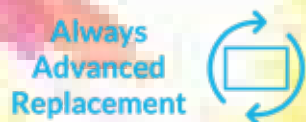


## On-Demand Technical Support

Newline provides continuous U.S. based technical phone support, email support through our Helpdesk Ticket System, and remote desktop support. You will always have an answer at your fingertips by using our online support knowledgebase.

Be in control of finding the answer to any question, any time, with our completely comprehensive self-help system.

## Advanced Replacement Warranty



## Training Geared for Ease of Use

One of the most important factors in achieving success is having a team that is knowledgeable and comfortable with technology.

Newline provides quality instructional training opportunities for all staff to meet the needs of a growing and changing workforce. The easier our display is for your team to use effectively, the more you can succeed.

# Our Partnerships

Newline is committed to providing the best user experience possible, and sometimes we can't do everything ourselves. So we partner with other great technology companies to create innovative products that make using our interactive solutions easier than ever!



Newline's X Series is an Intel approved Market Ready Solution that provides customers with an all-in-one videoconferencing solution.



Microsoft Windows Whiteboard leverages the power of touch through Newline to bring lessons and whiteboarding sessions to life.



FlatFrog's InGlass Technology powers several of Newline displays for a seamless and natural writing experience.



Logitech provides camera and microphone options that easily integrate with all of Newline's touch solutions.



Adjust your Newline display with BalanceBox's options for wall mounts and mobile stands, some even motorized.



Document cameras by Lumens connected to Newline touch displays help teachers get more done in the classroom.



Enhance your Newline interactive touch display with a versatile Mooreco mobile cart solution to provide you mobility.



Provide financing solutions to your Newline customers through TEQlease, giving additional purchasing options that work best for them.



Peerless-AV provides industry leading fixed mount and mobile stand solutions designed to improve your Newline experience.



Find a great, stylish AV setup with Salamander, who create a variety of mounting solutions to hold your display.



T1V provides a hardware wireless casting solution, along with other multi-touch applications that work with Newline displays.



Free your Newline display from the wall by putting it on one of Conen's several mobile stand options.

# FROM OUR CUSTOMERS...

DON'T JUST TAKE OUR WORD FOR IT...



**Steve Doughty**  
Eisenhower Middle School

"I have been absolutely blown away by the quality and features of the product! Adding the TRUTOUCH system capabilities to our classroom has made a lasting, permanent and positive impact on the educational experience at our school!"



**Cynthia Herndon**  
Roman Catholic  
Diocese of Dallas

"Newline's products are engaging our students in classrooms across the Diocese and our teachers love them for their ease-of-use. Besides their outstanding products, we also value the level of technical support and on-site training that Newline provides to us whenever we need it."



**Kenneth Daigre**  
Port Arthur Independent  
School District

"The teachers went bananas when they saw the TRUTOUCH in use. We're so excited to have this level of technology for our classes because they never thought we'd be able to afford it."



**David Flynn**  
Macon County  
School System

"We chose the TRUTOUCH from Newline after trying out a couple options. All our classrooms have SMARTboards but as the older ones were needing replacing, it was clear it was time to move to another device. As a G Suite district and invested in Chromebooks, the TRUTOUCH was a clear winning choice. The Chrome compatibility, advanced features, and their support have made this a real winner for the classrooms in our district."



**Kelley Watson**  
MacArthur High School  
Entrepreneurship Program

"Using the TRUTOUCH system allows the students to show their work on a larger surface, annotate anything that they need to make changes on, and it involves a group setting."



**Ed Kemnitzer**  
East Williston  
School District

"Newline has enabled us to provide a seamless experience to kids without interference. The panels are not in the way, they are part of the process. All of our teachers have found their niche and love how easy it is to use the panel."



**Karina Garcia**  
St Bernard of Clarivaux  
Catholic School

"Our TRUTOUCHs are very easy to use and that means more teachers and students are really using them! We are so pleased that we have these tools in our classrooms!"

# AWARDS & RECOGNITIONS

# TRUSTED BY MANY

PROUDLY SERVING SCHOOL DISTRICTS COAST TO COAST

2015	 EY Entrepreneur Of The Year Entrepreneur of the Year Finalists	 HOT50 InfoComm Products InfoComm 2015 Hot 50 Product	 EYE ON TECHNOLOGY CBS Eye on Technology Appearance
	 Best New Interactive Flat Panel - ISE	 2016 BEST SHOW InfoComm 2016 Best in Show	 EY Entrepreneur Of The Year Entrepreneur of the Year Finalists
	 AV AWARDS 2016 FINALIST	 Top Fast Tech Companies #1 Fast Tech Company	 AWARDS FINALIST 2016 Best Office Technology Product Finalist
	 Inc. 500 Ranked #149 in 2017 Inc. 500	 DALLAS 100 #10 of the Dallas 100	 TechTitans Top 5 Fast Tech Companies
2016	 EY Entrepreneur Of The Year Entrepreneur of the Year Finalists	 2016 BEST SHOW InfoComm 2016 Best in Show	 EY Entrepreneur Of The Year Entrepreneur of the Year Finalists
	 AV AWARDS 2017 FINALIST	 DALLAS 100 #6 of the Dallas 100	 TechTitans Top 5 Fast Tech Companies
	 Inc. 5000 '293 2018 Ranked #293 in 2018 Inc. 500	 500 Ranked #81 of the Deloitte Fast 500	 AV AWARDS 2018 FINALIST AV Awards 2018 Finalist
	 TCEA 2019 BEST OF SHOW TCEA 2019 Best of Show	 Intel IoT Solutions Alliance 2019 Partner of the Year	 EY Entrepreneur Of The Year Entrepreneur of the Year Finalists
2017	 EY Entrepreneur Of The Year Entrepreneur of the Year Finalists	 AV AWARDS 2017 FINALIST	 DALLAS 100 #6 of the Dallas 100
	 AV AWARDS 2018 FINALIST AV Awards 2018 Finalist	 Inc. 5000 '293 2018 Ranked #293 in 2018 Inc. 500	 TechTitans Top 5 Fast Tech Companies
	 TCEA 2019 BEST OF SHOW TCEA 2019 Best of Show	 Intel IoT Solutions Alliance 2019 Partner of the Year	 EY Entrepreneur Of The Year Entrepreneur of the Year Finalists
	 TCEA 2019 BEST OF SHOW TCEA 2019 Best of Show	 Intel IoT Solutions Alliance 2019 Partner of the Year	 EY Entrepreneur Of The Year Entrepreneur of the Year Finalists
2018	 AV AWARDS 2018 FINALIST AV Awards 2018 Finalist	 TechTitans Top 5 Fast Tech Companies	 Inc. 5000 '293 2018 Ranked #293 in 2018 Inc. 500
	 TCEA 2019 BEST OF SHOW TCEA 2019 Best of Show	 Intel IoT Solutions Alliance 2019 Partner of the Year	 EY Entrepreneur Of The Year Entrepreneur of the Year Finalists
	 TCEA 2019 BEST OF SHOW TCEA 2019 Best of Show	 Intel IoT Solutions Alliance 2019 Partner of the Year	 EY Entrepreneur Of The Year Entrepreneur of the Year Finalists
	 TCEA 2019 BEST OF SHOW TCEA 2019 Best of Show	 Intel IoT Solutions Alliance 2019 Partner of the Year	 EY Entrepreneur Of The Year Entrepreneur of the Year Finalists
2019	 TCEA 2019 BEST OF SHOW TCEA 2019 Best of Show	 Intel IoT Solutions Alliance 2019 Partner of the Year	 EY Entrepreneur Of The Year Entrepreneur of the Year Finalists
	 TCEA 2019 BEST OF SHOW TCEA 2019 Best of Show	 Intel IoT Solutions Alliance 2019 Partner of the Year	 EY Entrepreneur Of The Year Entrepreneur of the Year Finalists
	 TCEA 2019 BEST OF SHOW TCEA 2019 Best of Show	 Intel IoT Solutions Alliance 2019 Partner of the Year	 EY Entrepreneur Of The Year Entrepreneur of the Year Finalists
	 TCEA 2019 BEST OF SHOW TCEA 2019 Best of Show	 Intel IoT Solutions Alliance 2019 Partner of the Year	 EY Entrepreneur Of The Year Entrepreneur of the Year Finalists

 Miami-Dade County Public Schools	 TULSA PUBLIC SCHOOLS	 BALTIMORE CITY PUBLIC SCHOOLS	 PLEASANT VALLEY SCHOOL DISTRICT 150th ANNIVERSARY
 SOUTHERN WESTCHESTER BOCES	 Klamath Falls City Schools	 SAN JACINTO UNIFIED SCHOOL DISTRICT	 JOHNSTON COUNTY PUBLIC SCHOOLS
 NATIONAL FLIGHT ACADEMY	 CENTRAL KITSAP SCHOOL DISTRICT	 MACON COUNTY SCHOOLS	 ST. MICHAEL SPECIAL SCHOOL
 MORONGO UNIFIED SCHOOL DISTRICT	 Westhampton Beach School District	 Orange County Public Schools	 Pitt County Schools
 TAYLOR COUNTY	 GILES COUNTY SCHOOLS	 METRO NASHVILLE PUBLIC SCHOOLS	 LAWTON PUBLIC SCHOOLS
 Seminole County Public Schools	 KEYSER SCHOOL DISTRICT	 LAWTON PUBLIC SCHOOLS	 PUYALLUP SCHOOL DISTRICT

AND THOUSANDS MORE!



# newline

CONNECT. CREATE. COLLABORATE.

101 E Park Blvd, Suite 807  
Plano, TX 75074

1-888-233-0868  
[www.newline-interactive.com](http://www.newline-interactive.com)