

laser
light source



4K UHD
READY



PA Series

Professional Installation Projectors ideal for corporate, higher education and museum applications

LCD laser installation projectors extreme brightness captivates audiences in conference rooms, auditoriums and sanctuaries

Powerful Tools

- Multi-display support with Picture by Picture/Picture in Picture
- TileMatrix (internal multi-screen splitter) enables 4Kx2K resolution utilizing 4 projectors without the need for external hardware
- Built-in daisy chain capabilities support multi-display applications
- Seamlessly blend multiple images with integrated edge blending capabilities

Integrated

- 4K Ready - Display stunning 4K 60P content using NEC's proprietary high performance video processing/scaling chip without the loss of critical details.
- Integrated software applications such as AMX Beacon, Crestron Roomview, Extron XTP and PJ Link allow for complete control system support
- Learning of basic control of competitors product reduces the need for reprogramming of a control system lowering the cost of your installation by eliminating the need for costly reprogramming of a control system. (supports competitors commands, call NEC for complete list)

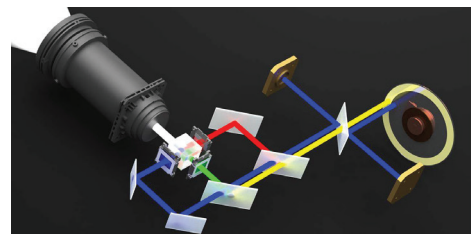


Flexible

- Enjoy greater installation flexibility with motorized bayonet style lenses providing quick and easy exchanges. Lens throw distances range from 4.25 to 141ft
- Roll-free installation capabilities make these projector ideal for almost any install environment, including portrait orientation

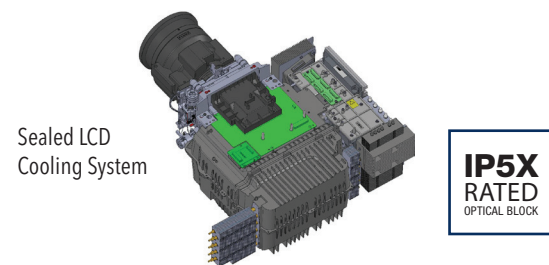
Laser

- Images appear immediately after power on due to instantaneous start up of the laser
- Dual blue laser systems provide best in class white balance over the life of the projector
- Inorganic optical components create longer lifetime and greater peace of mind



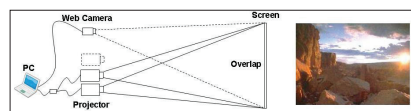
Filter Free

- Filter free LCD projector
- IP5X certified Sealed LCD cooling system prevents dust from reaching the optics and eliminates the need for a filter
- External air never enters the optical path
- Dust artifacts cannot influence picture quality or decrease image brightness
- LCD Laser Projector that is virtually maintenance free!



Stacking correction

The industry's first built-in stacking correction capabilities (up to four projectors) allows the projectors to boost an image's brightness up to 68,000 lumens, which is ideal for larger-sized screens and environments with heavy ambient light. This feature also prevents the complete loss of an image, which can happen when using only one projector.



Edge blending

This function seamlessly blends multiple projected images to display a single high-resolution image.



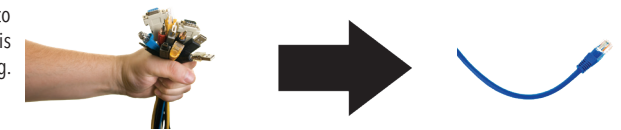
ProAssist™

Projector management software for installation professionals provides full projector control for multiple screens to create the perfect image. Controls such as input switching, picture, lens, edge blending, uniformity and gamma control are adjustable through the GUI.



Built-In HDBaseT Support

Simplify your installations with HDBaseT. Optimized for video applications and supporting uncompressed full HD digital video, audio, ethernet, power and various control signals. With only a single cable (up to 100m) to run, infrastructure and labor costs are reduced, installations are significantly easier, and there is no cable clutter to manage. With uncompressed HD video support, images have never been more stunning. What's more, control signals are contained in the same cable.



Get Connected with a Wide Selection of Inputs

- **Multiple Digital computer inputs** ensure quick switching between presentations
- **Three audio inputs (HDMI1TM & HDMI2TM and HDBaseT)** make it easy to add sound to enhance your presentations

Remote control

Wired and wireless backlit remote allows you to adjust for complete control of the projectors menu structure in a well lit or dark environment. Direct controls such as lamp mode, aspect ratio, volume and input selection eliminates multiple button pushes.



Digital Inputs

Among the PA Series' wide selection of inputs are dual HDMI w/HDCP and HDBaseT w/HDCP for connecting to high-definition sources such as Blu-ray players, cable boxes, satellite receivers and personal computers.



Cable Cover

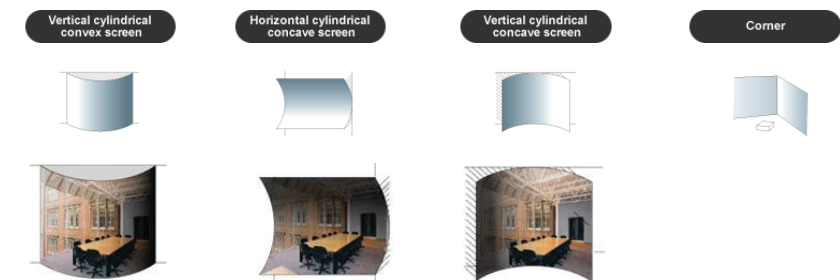
This included accessory creates a clean look for your installation, while hiding signal cables and the power cord.



Advanced Software Features

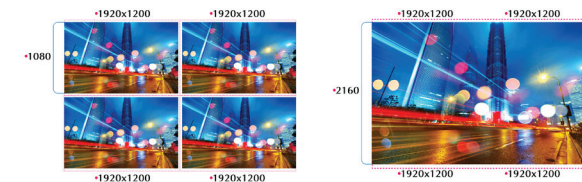
Geometric Correction

Projecting an image isn't confined to a standard flat screen or wall with the NEC PA Series. Geometric correction allows these models to project an image on spheres, cylinders, corner angles and many more non-standard surfaces.



Screen Splitter

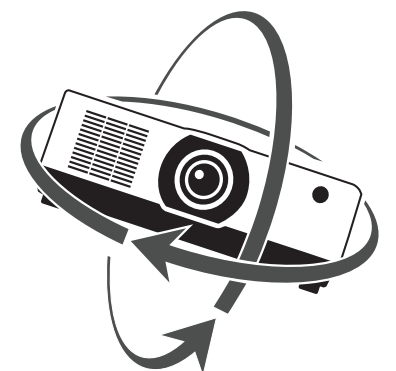
NEC is committed to bringing the latest and greatest innovation to projectors. Multi-display capabilities and TileMatrix technologies are integrated into the new PA Series projectors. This processing is all done internally and therefore eliminates the additional hardware typically required to produce a beautiful 4K resolution image.



Screen Splitter (Multi Display) by Daisy Chain

Roll Free

When installation requirements dictate the projector needs to be placed at different angles the PA Series with Roll Free capabilities assures it is the correct projector of choice.



Unique Features

Variable audio-out enables the remote control to be used to adjust volume of self-powered external speakers that are connected to the projector. In stand-by mode, the audio-out stays active, allowing the last input used to pass to the self-powered external speakers.

Advanced AccuBlend™ ensures detailed images when non-native resolution sources are connected to the projector

64-step image magnification with location control

Built-in HTTP page for control and monitoring over a LAN network. Email notification of error messages or lamp end-of-life can be sent to remote locations.

Warranty

Registered owners receive a five (5) years or 20,000 hours (whichever comes first) parts and labor warranty including InstaCare next business day exchange.

In the Box

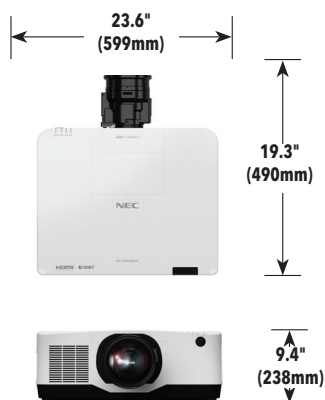
Remote control, batteries, power cord, cable cover, user's manual on CD-ROM, quick start guide, product registration card.

Accessories

| | |
|-----------------|---|
| RMT-PJ40 | Replacement Remote Control |
| Optional Lenses | NP53ZL, NP54ZL, NP55ZL |
| IPJ2000CM | Ceiling Mount |
| AEC006009 | Adjustable Extension Column, 6" - 9" |
| AEC012018 | Adjustable Extension Column, 12" - 18" Adjustable |
| AEC0203 | Extension Column, 2' - 3' |
| AEC0305 | Adjustable Extension Column, 3' - 5' |
| RGBCBL-PJPX | RGB Signal Cable |

Ordering Model Numbers

| | |
|---------------|---------------|
| NP-PA1505UL-B | NP-PA1705UL-B |
| NP-PA1505UL-W | NP-PA1705UL-W |



| | | NP-PA1505UL | NP-PA1705UL | |
|---|---|---|--|--|
| Light Output (lumens) | Center | 15,000 | 17,000 | |
| | Normal | 14,000 | 16,000 | |
| | ECO Mode OFF | 13,500 | 15,300 | |
| Resolution | Native | WUXGA 1920x1200 | | |
| | Maximum | 4K 4096 x 2160 | | |
| Contrast Ratio (up to) | 3,000,000:1 (with Dynamic Contrast) | | | |
| Laser Life (up to) | 20,000 hours | | | |
| Screen Size (diagonal) | 1.52 to 12.7m, NP53ZL, NP54ZL, NP55ZL | | | |
| Throw Ratio | NP53ZL | 0.86 - 1.25:1 | | |
| | NP54ZL | 1.24 - 2.01:1 | | |
| | NP55ZL | 1.98 - 3.95:1 | | |
| Projection Distance | 3.58 to 141 ft. / 1.09 to 43m | | | |
| Projection Angle | 5.8 to 18.1° tele / 11.4 to 25.8° wide | | | |
| Lens | Motorized | | | |
| | Zoom | NP53ZL | 1.45x | |
| | | NP54ZL | 1.62x | |
| | | NP55ZL | 1.99x | |
| | Motorized | | | |
| | Focus | NP53ZL | Motorized zoom / focus, F=1.8 to 2.24, f= 19.0 - 27.6mm, 3.7 lbs. / 5.3 kg | |
| | | NP54ZL | Motorized zoom / focus, F=1.8 to 2.24, f= 27.7 - 44.9mm, 3.7 lbs. / 4.5 kg | |
| NP55ZL | | Motorized zoom / focus, F=1.84 to 2.58, f= 43.8 - 87.2mm, 3.7 lbs. / 5.4 kg | | |
| Shift | +/- 25% horizontal, +/- 65% vertical | | | |
| Shutter | Laser Shutter | | | |
| Keystone Correction | +/- 40° horizontal, +/- 30° vertical | | | |
| Synchronization Range | Horizontal | 24-153kHz | | |
| | Vertical | 50-120Hz | | |
| Supported Video Standards | NTSC, NTSC4.43, PAL, PAL-60, PAL-M, PAL-N, SECAM | | | |
| SD/HD Video Signal Compatibility | 480i, 480p, 576i, 576p, 720p, 1080i, 1080p, 4K | | | |
| PC Signal Compatibility | VGA, SVGA, XGA, SXGA, SXGA+, UXGA, WUXGA, Quad HD | | | |
| Macintosh Compatibility | Yes | | | |
| Input Terminals | RGB1 (digital) | HDMI (V2.0) w/HDCP (V1.4/2.2) | | |
| | RGB2 (digital) | HDMI (V2.0) w/HDCP (V1.4/2.2) | | |
| | RGB3 (digital) | HDBaseT w/HDCP (V1.4/2.2) | | |
| | RGB4 (digital) | 3G SDI (SMPTE ST 424M / SMPTE 292M) | | |
| Output Terminals | Monitor Out | HDBaseT Repeater | | |
| | Audio Out | Stereo Mini Jack | | |
| External Control | RS-232, IR, Wired Remote, HDBaseT, DDC/CI, RJ-45, USB (USB 2.0) | | | |
| Sync Compatibility | Separate Sync / Composite Sync / Sync on G | | | |
| Power Requirements | 100-240V AC, 50/60 Hz | | | |
| Input Current | 11.6A - 5.1A | 12.8A - 5.6A | | |
| Power Consumption | | | | |
| (ECO off/ECO Mode/Standby/Standby-Power Saving) | 960W / 855W / 0.4W / 0.15W | | 1035W / 855W / 0.4W / 0.15W | |
| Installation Orientation | Floor/Front, Floor/Rear, Ceiling/Front, Ceiling/Rear | | | |
| Product Dimensions (WxDxH) | 23.6 x 19.3 x 9.4 in. / 599 x 490 x 238 mm | | | |
| Net Weight | 63.7 lbs. / 28.9 kg | | | |
| Shipping Dimensions (WxDxH) | 29.1 x 24.8x 15.0 in. / 739 x 629 x 382 mm | | | |
| Gross Weight | 71.9 lbs. / 32.6 kg | | | |
| Fan Noise | 40 dB normal / 35 dB silent mode | 42 dB normal / 38 dB silent mode | | |
| Regulations | US | USA UL60950-1: 2nd edition, FCC Part15 Subpart B(ANSI C63.4:2014) | | |
| | Canada | CAN/CSA C22.2 No.62368-1-18,3rd Edition, ICES-003 Issue 7(ANSI C63.4-2014) | | |
| Operating | Temperature | 32-113°F / 0-45°C | | |
| | Humidity | | | |
| Storage | Temperature | 14-122°F / -10-50°C | | |
| | Humidity | 20% - 80% (non-condensing) | | |
| Ordering Model Number | | NP-PA1505UL-B, NP-PA1505UL-W | NP-PA1705UL-B, NP-PA1705UL-W | |



* Lens does not ship with the projector. Additional accessories are available, including screens, carts, mount accessories and replacement cables. Visit www.sharpedisplays.com for details.