

NEC Direct View LED-E018i (1.875mm E Series Indoor)



NEC Direct View LED – Intelligent display solutions for a brighter world

The NEC E Series provides cost conscience customers impressive LED imaging without compromising on the service and support expected from the Sharp/NEC brand. With 4 popular different pixel pitch options (1.2mm, 1.5mm, 1.8mm, and 2.5mm) the optimum display resolution can be achieved regardless of viewing distance. The E Series is designed to deliver the advantages of a seamless dvLED display in a cost effective, accessible package. Boardrooms, auditoriums, retail, and education are just some of the applications where the

NEC E series is designed to be integrated. NEC offers full planning and design, installation and post installation maintenance support, ensuring you get a custom tailored solution allowing you to focus on what's most important – your business.

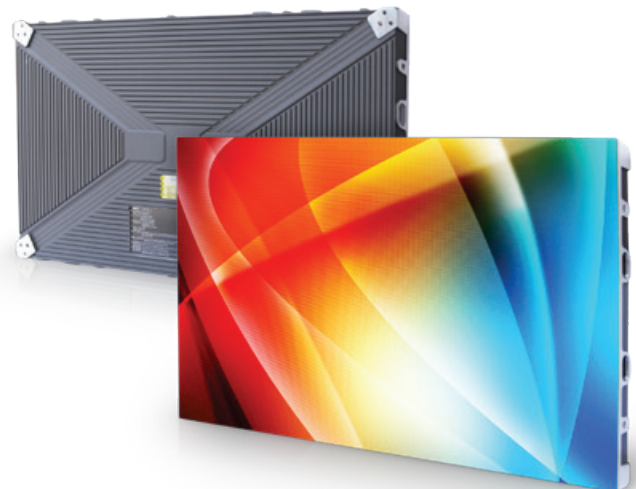
Benefits

Front Serviceable Design minimizes downtime by providing easy access and quick maintenance

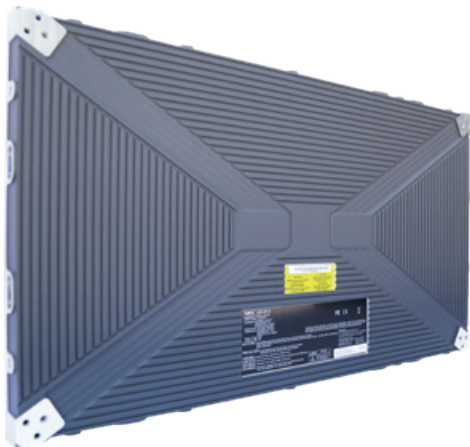
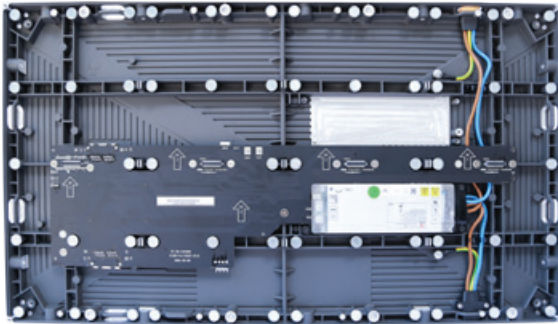
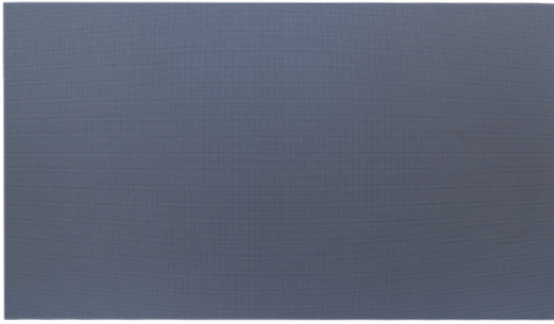
Modular Design with a 16:9 aspect ratio and a 27" diagonal allows for an accessible alternative to existing LCD video walls

Hot-Swappable Pixel Cards can be replaced without turning the display off

Thin and lightweight design allow for greater installation flexibility while also meeting ADA requirements



NEC Direct View LED-E018i (1.875mm E Series Indoor) - Technical Specification



Direct View LED Module		LED-E018i
Display	Panel Technology	Direct View LED
	Pixel Configuration	3-1 SMD (Black)
	Panel Resolution	320 x 180
	Aspect Ratio	16:9
	Pixel Pitch	1.875mm
	Brightness (typical)	800cd/m ²
	Contrast Ratio (typical)	7000:1
	Viewing Angle (typical)	80/80 horizontal / 70/70 vertical
	Dimming Capability	256 levels
	Color Processing	Up to 16 bit
	Displayable Colors	281 Trillion
	Refresh Rate	Up to 3840 Hz
CONNECTIVITY	Input Terminals Digital	1x 1000BaseT RJ-45
	External Control	RS232 / USB
POWER CONSUMPTION	On (typical)	40 Watts
	Max	125 Watts
PHYSICAL SPECIFICATIONS	Dimensions (W x H x D)	23.6 x 13.3 x 1.1in / 600 x 337.5 x 29mm
	Diagonal	27"
	Weight (Net)	10.4lbs / 4.7kg
ENVIRONMENTAL CONDITIONS	Operating Temperature	-4° to 104°F / -20° to 40°C
	Operating Humidity	10% to 80%
	Storage Temperature	-4° to 113°F / -20° to 45°C
	Storage Humidity	10% to 85%
	IP Rating	IP20
SHIPS WITH	Receiving card and power supply	
LIMITED WARRANTY	2 years	