

\* All images in this datasheet are for illustrative purposes only and may differ from the actual product.

**LG LED All-in-One LAED Series**

# 21:9 All-in-One LED Display

**1** All-in-One LED Screen

**21:9** 21:9 Screen Aspect Ratio

**2** Dedicated Accessories

**3** Easy Installation Quick Maintenance



**LAED015**

Screen Size	171" / 4343.4 mm
Pixel Pitch	1.56 mm
Brightness	500 nits (Max, after calibration)
Screen Resolution	2,560 x 1,080
Serviceability	Front
Speaker	Built-in
Controller	Embedded



## 21:9 Widescreen

With the support of a 21:9 aspect ratio, LAED series provides an immersive viewing experience. Its screen specialization helps display content including videoconferencing platforms with natural details.



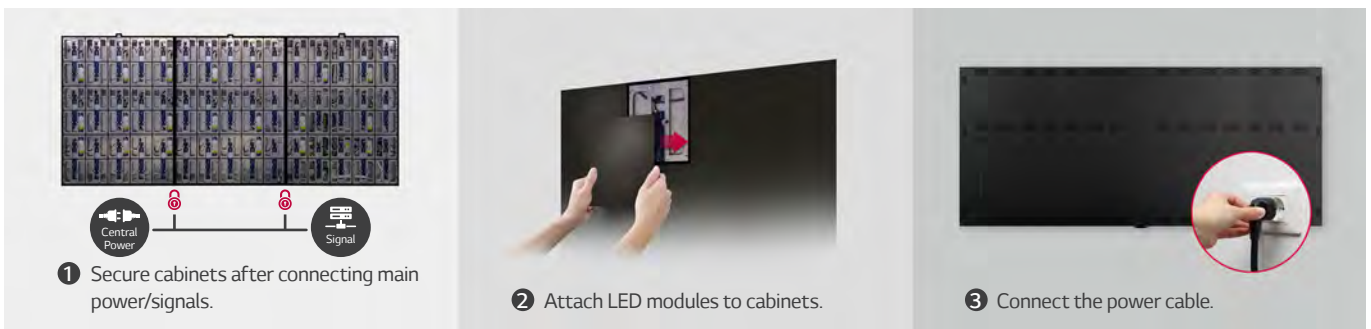
## All-in-One LED Screen with Built-in Speaker

LG's LED All-in-One LAED series with its 171-inch screen size is offered as an all-in-one package including an embedded controller and built-in speaker. It doesn't require controller connections or module configurations eliminating the complexity of most LED display installations. After installation, simply turn on the screen with a remote control like a home TV.



## Quick Maintenance

In the off chance of LED module or system board failure, it can be serviced from the front. The LED module can be simply detached with the provided magnetic tool and replaced quickly without cabling.



## Easy Installation

The installation process of the All-in-One LAED series is simple. Secure the three cabinets in its desired location to the included wall mount, attach each LED display module to the cabinets, and then plug in the power cable. This simple installation relieves the burden of intense labor.

\* One AC cable for 220VAC, Two for 110VAC





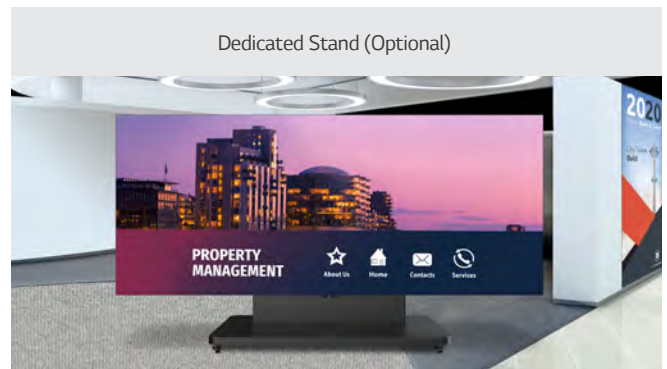
## Office Meeting Mode

By selecting Office Meeting Mode it allows you to configure meeting room details like the room number and current time. Other convenient features include automatic input switching, a presentation timer, and adjustable settings such as auto-brightness and picture mode.



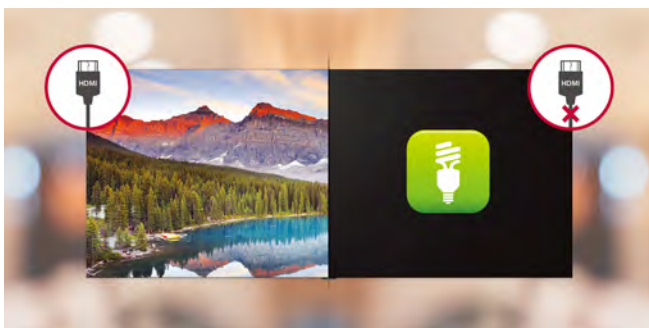
## Compatible with AV Control Systems

The LAED series has been certified Crestron Connected® for a higher level of compatibility with professional AV controls to achieve seamless integration and automated network based control.



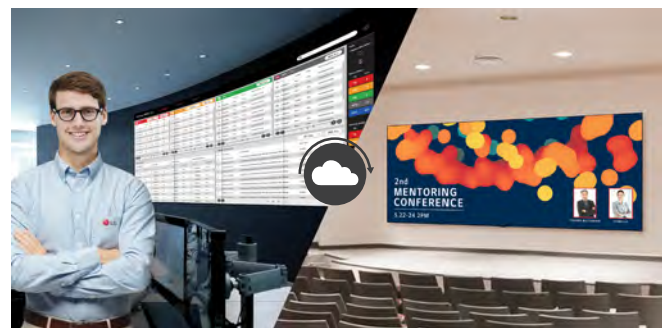
## Versatile Installation with Dedicated Accessories

The All-in-One LAED series includes an option that allows for landscape wall mount installation or by purchasing the optional dedicated stand depending on your installation sites.



## Display Power Management (DPM)

The DPM function of the LED screen allows it to enter a standby mode after a specific period of time when there is no signal from the input source device.



## Real-time LG ConnectedCare

Powered by LG's high performance system controller, the LAED series is compatible with LG software solutions including SuperSign CMS, LED Assistant, and ConnectedCare, which help customers have even more control over their systems.\*

\* LG ConnectedCare and LG SuperSign CMS are each sold separately. Actual user interface may vary in different webOS versions.

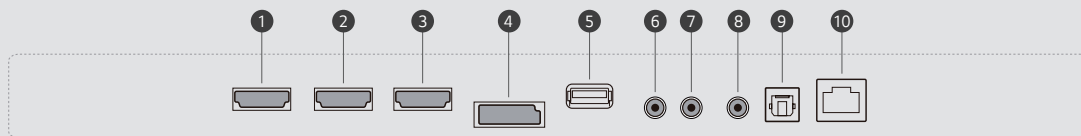
## SPECIFICATIONS

## LAED015-GN

Physical Parameters	Pixel Configuration	Single SMD
	Pixel Pitch (mm)	1.56
	Screen Resolution	2,560 × 1,080
	Module Dimensions (W × H, in. / mm)	9.8 × 11.1 / 250 × 281.25
	No. of Modules per Screen (W × H)	16 × 6 (Total 96)
	Screen Dimensions (W × H × D, in. / mm, including bezel)	157.6 × 66.6 × 1.4 / 4,003.3 × 1,691.8 × 36.5
	Screen Surface Area (m <sup>2</sup> )	73.2 / 6.8
	Screen Weight (lbs. / kg)	388 / 176
	Physical Pixel Density (ft <sup>2</sup> / m <sup>2</sup> )	409,600
	Flatness of Cabinet (mm)	±0.2
	Cabinet Material	Aluminum
	Service Access	Front
Optical Specifications	Max. Brightness (nits, after calibration)	500
	Color Temperature (K)	3,200-9,300
	Visual Viewing Angle (Horizontal)	160°
	Visual Viewing Angle (Vertical)	160°
	Brightness Uniformity	98%
	Color Uniformity	±0.015 Cx, Cy
	Contrast Ratio	3,000 : 1
	Processing Depth (bit)	16 (HDR10, HDR10 Pro)
Electrical Specifications	Power Consumption (W/Screen, Max.)	2,100
	Power Consumption (W/Screen, Avg.)	840
	Power Consumption (W/m <sup>2</sup> , Max.)	311
	Power Consumption (BTU/h/Screen, Max.)	7,165
	Power Consumption (BTU/h/Screen, Avg.)	2,866
	Power Consumption (BTU/h/m <sup>2</sup> , Max.)	1,062
	Power Supply (Vac)	100 to 240
	Frame Rate (Hz)	50 / 60
	Refresh Rate (Hz)	3,960
Operation Specifications	LED Lifetime (Half Brightness)	Up to 100,000 hours
	Operating Temperature (°F / °C)	32 to 104 / 0 to 40
	Operating Humidity	10-90% RH
	IP Rating (Front / Rear)	IP30 / IP20
Warranty	3 Year Limited	
Speaker	Built-in (9 W + 9 W)	
Certification	CE, FCC, ETL, CB	
Environment	RoHS, REACH	
Controller	Embedded	
I/O Port	HDMI (3), DP (1), USB, LAN, RS-232C In/Out, IR, Optical Digital Audio Out	

\* Specifications are subject to change without notice. Please make sure to check the product manual for details about product usage.

## CONNECTIVITY



- |          |              |                             |       |
|----------|--------------|-----------------------------|-------|
| ① HDMI 1 | ④ DP IN      | ⑦ RS-232C OUT               | ⑩ LAN |
| ② HDMI 2 | ⑤ USB 2.0 IN | ⑧ IR                        |       |
| ③ HDMI 3 | ⑥ RS-232C IN | ⑨ OPTICAL DIGITAL AUDIO OUT |       |