

PERFORMANCE

Processor

Intel® Core™ i7-10510U (4C / 8T, 1.8 / 4.9GHz, 8MB)

Graphics

Integrated Intel UHD Graphics

Chipset

Intel SoC Platform

Memory

1x 8GB SO-DIMM DDR4-3200

Max Memory^[1]

8GB soldered memory, not upgradable

Storage

128GB SSD M.2 2280 SATA6Gb/s

Storage Support

One drive, 128GB M.2 2280 SSD / SATA interface

Power Supply

240W Adapter

DESIGN

Case Color

Charcoal (Medium Kit)

Component Options

Medium Room Kit|1x Compute System|1x Touch Controller|1x Smart Audio Bar|1x Mic Pod|1x Smart Camera

Controller

10.1" Touch Controller, 2-point Multi-touch, Charcoal

Camera Component

Smart Camera, Black

Microphone Component^[2]

1x Mic Pod, Charcoal

Audio Bar

1x Smart Audio Bar, Charcoal

Dimensions (WxDxH)^[3]

- Smart Camera|107 x 84 x 42 mm (4.21 x 3.3 x 1.65 inches)
- Touch Controller|245 x 164 x 91 mm (9.65 x 6.46 x 3.58 inches)
- Compute System|284 x 135 x 29 mm (11.18 x 5.31 x 1.14 inches)
- Smart Audio Bar|705 x 95 x 133 mm (27.76 x 3.74 x 5.24 inches)
- Mic Pod|95 x 95 x 30 mm (3.74 x 3.74 x 1.18 inches)

Weight^[4]

- Mic Pod|215 g (0.47 lbs)
- Smart Audio Bar|3.3 kg (7.28 lbs)
- Smart Camera|321 g (0.71)
- Compute System|985 g (2.17 lbs)
- Touch Controller with plate|990 g (2.18 lbs)

CONNECTIVITY

Ethernet

Integrated 100/1000M

WLAN + Bluetooth®

Intel Wi-Fi® 6 AX201, 11ax 2x2 + BT5.0

Rear Ports

- 1x USB-C® 3.2 Gen 1
- 3x USB 3.2 Gen 1
- 1x HDMI®-in 1.4b
- 2x HDMI-out 1.4b with CEC
- 1x headphone / microphone combo jack (3.5mm)
- 1x power connector
- 5x RJ-45 Ethernet (one uplink port for internet connection, four downlink ports for IP-based peripherals)

SERVICE

Base Warranty

3-year, Premier Support

Included Upgrade

3Y Premier Support Courier/CCI Upgrade from 3Y Courier/CCI

SOFTWARE

Operating System

ChromeOS

MODEL

Product : Google Meet Series One Room Kits Gen 2 (Medium Kit)

TopSeller : Yes

Announce Date : 2021-12-13

EAN / UPC / JAN : 196378833781

End of Support : 2028-04-07



Product image is a sample, it may not match the real color of this model

Note:

^[1] The max memory is based on the test results with current Lenovo memory offerings.

^[2] Daisy Chain supports up to 4 mic pods.

^[3] The system dimensions may vary depending on configurations.

^[4] The system weight is approximate and based on results in Lenovo lab, which varies depending on the source of component, variance of the distribution of each component, and manufacturing process. It may not be the exact weight for each specific model.

· Lenovo reserves the right to change specifications without notice.

To see more note information, please link to

<https://psref.lenovo.com/Detail/1810?M=20YW0007US>

Premier Support - A direct 24x7x365 line to our most elite technicians.



Advanced technical support, 24x7x365, in more than 100 markets



Technical Account Managers for proactive relationship and escalation management



Comprehensive hardware & OEM software support



Priority on service delivery and repair parts



Single point of contact for simplified end-to-end case management



Lenovo Service Connect Portal for customized reporting and product support

Accidental Damage Protection - Protection of your PC from the unexpected.

Experience shows that a significant portion of devices may be damaged (and not covered under warranty) in the first three years. Lenovo's Accidental Damage Protection service covers accidents beyond the system warranty such as drops, spills, bumps and even electrical surges. Make sure your new device has maximum protection, avoid unplanned costs and get peace of mind.

Base Warranty - Included with the systems you purchase, default 1- or 3-year coverage window.

Warranty Extensions & Upgrades - Service and protection that's right for your circumstances.

- Pick Up & Return Courier
- Onsite Support
- Technician Installed Customer
- Replaceable Unit Service
- International Warranty Upgrade

Lenovo may not offer the products, services or features discussed in this document in all regions. Lenovo may withdraw an offering at any time. Information is subject to change without notice. Consult your local representative for information on offerings available in your area. Lenovo reserves the right to change specifications or other product information without notice. Lenovo is not responsible for photographic or typographical errors. Lenovo provides this publication "as is" without warranty of any kind, either express or implied, including the implied warranties of merchantability or fitness for a particular purpose.

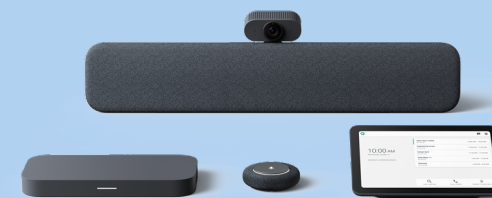
Recommended Accessories



TS 28 S28U10 HDMI MONITOR

61E6GAR2US

The Lenovo ThinkVision S28u-10, offers professional monitor features while remaining a smart and intelligent business investment. The 4K UHD resolution screen has a 99% accurate sRGB color gamut and 90% accurate DCI-P...



For a full list of accessories and services, please visit:
<https://smartfind.Lenovo.com>

Lenovo

PSREF
Product Specifications
Reference