

Refrigeration Equipment Reach-In Refrigerator, 1 Door, 18 cu.ft - Stainless Steel

ITEM # _____

MODEL # _____

NAME # _____

SIS # _____

AIA # _____



738079 (KCBM180RQY)

1-door reach-in digital refrigerator, stainless steel, 18 cubic feet, R290 refrigerant gas, +32/+44°F

Short Form Specification

Item No. _____

Full door refrigerator with internal and external structure in painted steel. NSF®-Certified mechanical control with internal temperature display. Self closing and on-site reversible door feature lock and key.

R290 gas in the refrigeration circuit.

CSA Safety Certification

NSF® Sanitation Certification

3/5 Years warranty.

Main Features

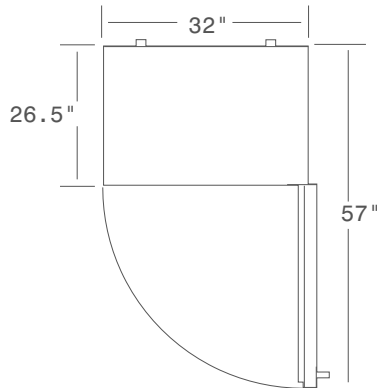
- Removable door gasket for easy cleaning operations.
- Hydrocarbon refrigerant gas R290 for the lowest environmental impact (GWP=3) - CFC and HCFC free.
- Fin & Tube Condenser improves performance in high temperature environments.
- Automatic Defrost Cooling System provides worry-free performance.
- Heavy duty Vinyl coated steel shelves.
- High efficiency components to minimize the energy consumption still guaranteeing the highest performances.
- Cabinet and door insulated with high density polyurethane for low environmental impact.
- Bottom mounted cooling unit slides out for easy access and cleaning.
- CFC and HCFC free, highly ecological refrigerant type: R290 (ecological gas in foam: cyclopentane). Hydrocarbon refrigerant gas R290 for the lowest environmental impact (GWP=3), to reduce green house and ozone depletion effects.
- Interior light.
- Mechanical control with adjustable temperature.

Construction

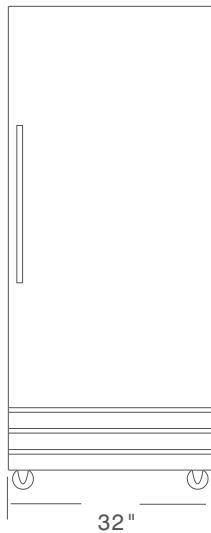
- Lockable door.
- Reversible door.
- Self-closing door with 90-degree stay-open feature.
- Heavy duty casters.
- Pre-wired heavy duty power cord.
- Heavy duty door hinges.
- Magnetic door gasket removable without tools for easy cleaning.

APPROVAL: _____

Top



Front



EI = Electrical connection

Side



Electric

Supply voltage:

738079 (KCBM180RQY) 115 V/1 ph/60 Hz

Electrical power, max:

0.2 kW

Plug type:

USA NEMA 5-15P

Key Information:

Capacity (Cu.Ft.)	18
Door hinges:	
External dimensions, Width:	32 " (812.8 mm)
External dimensions, Depth:	30 1/2" (774.7 mm)
External dimensions, Height:	75 " (1905 mm)
Number and type of doors:	
Number and type of grids (included):	4 - Vinyl-Coated steel
Type of external material:	430 AISI
Type of internal material:	
Warranty:	3 / 5 years

Refrigeration Data

Compressor Horsepower:	1/6
Refrigerant type:	
Operating temperature min.:	32 °F
Operating temperature max.:	32 °F
Condenser type:	Fin & tube
Defrost type:	