

JELCO ATA Shipping Cases



Those who know, choose Jelco.

RENTAL • TRADE SHOWS • EVENT MARKETING • HOTEL SERVICES •
CORPORATE • GOVERNMENT • EDUCATION • MILITARY • WORSHIP
• SPORTS • DIGITAL SIGNAGE • TRAINING • VIDEO CONFERENCING •
BROADCASTING



Making Your Gear as Mobile as You Are.

JELCO ATA Shipping Case

For 32" Flat Screen Displays

Features:

- High impact ABS plastic over ¼" wood frame with steel corners, aluminum trim, interlocking valence and stainless steel rivets produces an ultra-strong case that will give years of service
- Safe to check or ship via common carrier.
- Custom-built to fit exact display model specifications
- Comes standard with tilt wheels and recessed grab handle
- Size & weight varies based on display dimensions



Images used
for illustration only



JEL-FP32/JEL-FP32ST

Single Display Case

JEL-FP32

- Fits 32" display with removable "T" Style feet or no table stand
- Includes generous accessory space for "T" style feet, remote, cables, etc

JEL-FP32ST

- Fits 32" display with table stand attached.
(No designated accessory space)



Making Your Gear as Mobile as You Are.

JELCO ATA Shipping Case

For 37"-70" Flat Screen Displays

Features:

- Built to ATA-300 Category 1 standards
- Includes recessed handles, spring loaded twist lock latches, stamped nickel-plated large flat corners, key locks and 4" locking casters
- Fully foam lined, with industrial grade foam custom to your display model
- Rugged ABS plastic, laminated over premium grade marine plywood



Exterior



Single Interior

Single Display Cases

JEL-PDP42T1—Compact Style

- Designed for 37"-46" displays

JEL-PDP50T1—Compact Style

- Designed for 46"-52" displays

JEL-PDP60T1—Compact Style

- Designed for 55"-60" displays

JEL-PDP70T1—Compact Style

- Designed for 65"-70" displays

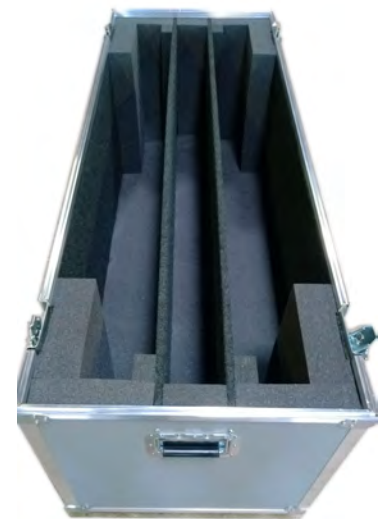
Dual Display Cases

JEL-FP46X2

- Designed to fit two 46" displays with additional center slot for accessories

JEL-FP55X2

- Designed to fit two 55" displays with additional center slot for accessories



Dual Interior



Making Your Gear as Mobile as You Are.

450 Wheeling Rd. | Wheeling, IL 60090 toll free: 888-875-3526 | phone: 847-459-5207 fax: 847-459-5262 | www.jelcoinc.com

JELCO is a registered trademark of JELCO, INC.

JELCO Non-Stock ATA Shipping Case

NSATA-C/NSATA-E

JELCO Non-Stock ATA Cases are build-to-order shipping cases custom-designed to fit a specific size projector and basic accessories (cords, cables, remote, etc.)

These rugged shipping cases are constructed of high impact gray ABS plastic laminated over a wood frame. Steel corners, aluminum trim, inter-locking valence and stainless steel rivets produce an ultra-strong case that will give years of service.

Each NSATA shipping case is fully lined with 1-1/2 inches of firm industrial grade foam, custom designed to fit your specific projector model. Tilt wheels with 3-stage locking extension handle and combination lock come standard.

A generous-sized accessory compartment holds the cords, cables, and remote control, as well as other needed items.



Images used
for illustration only



Features & Specifications

- High impact ABS plastic over 1/4" wood frame with steel corners, aluminum trim.
- Safe to check or ship via common carrier.
- Custom-built at the time you place your order to specifically fit your projector model.
- Comes standard with tilt wheels, 3-stage handle and combination lock.
- **Size:** varies based on shape of projector
- **Weight:** Approximately 25-35 lbs. empty



Making Your Gear as Mobile as You Are.

JELCO Non-Stock ATA Shipping Case

NSATA-F/NSATA-G

JELCO Non-Stock ATA Cases are build-to-order shipping cases custom-designed to fit a specific size projector and basic accessories (cords, cables, remote, etc.)

These rugged shipping cases are constructed of high impact gray ABS plastic laminated over a wood frame. Steel corners, aluminum trim, inter-locking valence and stainless steel rivets produce an ultra-strong case that will give years of service.

Each NSATA shipping case is fully lined with 1-1/2 inches of firm industrial grade foam, custom designed to fit your specific projector model. Tilt wheels with extension handle and combination lock come standard.

A generous-sized accessory compartment holds the cords, cables, and remote control, as well as other needed items.



Images used
for illustration only



Features & Specifications

- High impact ABS plastic over 1/4" wood frame with steel corners, aluminum trim.
- Safe to check or ship via common carrier.
- Custom-built at the time you place your order to specifically fit your projector model.
- Comes standard with tilt wheels, 3-stage handle and combination lock.
- **Size:** varies based on shape of projector
- **Weight:** Approximately 25-35 lbs. empty



Making Your Gear as Mobile as You Are.

JELCO Non-Stock ATA Shipping Case

**NSATA-K/NSATA-N/NSATA-R/NSATA-U/NSATA-V/NSATA-Y
NSATA-KL/NSATA-NL/NSATA-RL/NSATA-UL/NSATA-VL/NSATA-YL***

JELCO Non-Stock ATA Cases are build-to-order shipping cases custom-designed to fit a specific size projector and basic accessories (cords, cables, remote, etc.)

These rugged shipping cases are constructed of high impact gray ABS plastic laminated over a wood frame. Steel corners, aluminum trim, inter-locking valence and stainless steel rivets produce an ultra-strong case that will give years of service.

Each NSATA shipping case is fully lined with 1-1/2 inches of firm industrial grade foam, custom designed to fit your specific projector model. Tilt wheels with extension handle and combination lock come standard.

A generous-sized accessory compartment holds the cords, cables, and remote control, as well as other needed items.



*This product is available with separate lens compartment
(all models indicated with an "L")
-or- without lens compartment



Images used
for illustration only



Features & Specifications

- High impact ABS plastic over 1/4" wood frame with steel corners, aluminum trim.
- Safe to check or ship via common carrier.
- Custom-built at the time you place your order to specifically fit your projector model.
- Comes standard with tilt wheels, 3-stage handle and combination lock.
- **Size:** varies based on shape of projector
- **Weight:** Approximately 40-65 lbs. empty



Making Your Gear as Mobile as You Are.

JELCO Non-Stock Storage Case

NSBS-K/NSBS-N/NSBS-R/NSBS-U/NSBS-V/NSBS-Y

JELCO Non-Stock Storage Cases are custom-designed to fit a specific size projector and basic accessories (cords, cables, remote, etc.)

These rugged storage cases are constructed of high impact .098 ABS plastic with plywood reinforced side panels, stamped zinc-plated steel corners, nylon straps and spring loaded cushioned handles for easy and comfortable carrying.

Each NSBS storage case is fully lined with 1-1/2 inches of firm industrial grade foam, custom designed to fit your specific projector model. Tilt wheels with extension handle come standard.

A generous-sized accessory compartment holds the cords, cables, and remote control, as well as other needed items.



Images used
for illustration only

Features & Specifications

- High impact ABS plastic with plywood reinforced side panels and stamped zinc-plated steel corners
- Nylon straps with buckle closures
- Custom-built at the time you place your order to specifically fit your projector model
- Comes standard with tilt wheels and extension handle
- **Size:** varies based on shape of projector
- **Weight:** Approximately 30-49 lbs. empty



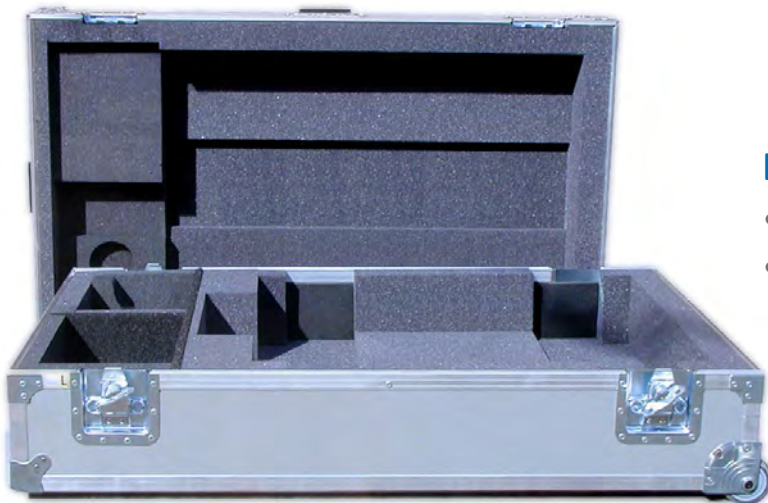
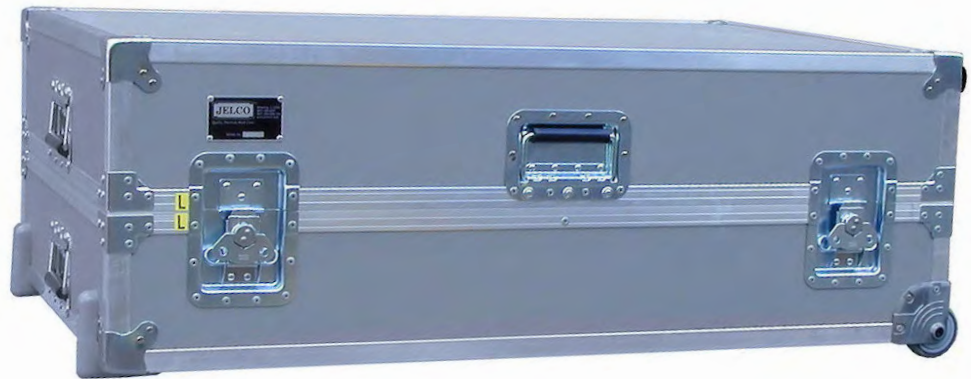
Making Your Gear as Mobile as You Are.

JELCO ATA Shipping Case

JEL-71HDWL

Features:

- Designed to be shipped FedEx/UPS or to be checked at the airport (extra fees may apply)
- High impact ABS plastic over wood frame with steel corners, aluminum trim
- Foam interior specifically designed for the protection of the projector
- Separate, foamed compartment for projector lens
- Generous storage inside for cords, cables and remote
- Durable tilt wheels and recessed handles
- Convenient lift-off lid



Dimensions

- Outside (L x W x H): 44" x 26" x 16"
- Weight: 61 lbs.



Making Your Gear as Mobile as You Are.

JELCO ATA Shipping Case

Fits Da-Lite Deluxe Insta-Theater® 60/73/80/90/100

Exterior of case uses High Strength Plastic Laminate, which is permanently bonded to 1/4" premium grade solid core plywood case surface. All handles and twist-lock latches are recessed to prevent damage during shipping.

A heavy-duty, full length hinge is used on the lid. Two lid stays help to keep lid open. Other features include aluminum tongue and groove valance, extruded aluminum edges and steel corners.

- Interior of case is lined with industrial grade foam
- Key locks and tilt wheels are available by request
- Meets or exceeds Air Transport Association Specification 300 Category 1 Standards



JEL-DA60 60" Version

- Dimensions (L x W x H): 59.75" x 7.75" x 7.75"
- Weight: 30 lbs.

JEL-DA80 73" & 80" Version

- Dimensions (L x W x H): 75.75" x 7.75" x 7.75"
- Weight: 37 lbs.

JEL-DA100 90" & 100" Version

- Dimensions (L x W x H): 95.25" x 7.75" x 7.75"
- Weight: 47 lbs.



Making Your Gear as Mobile as You Are.

450 Wheeling Rd. | Wheeling, IL 60090 toll free: 888-875-3526 | phone: 847-459-5207 fax: 847-459-5262 | www.jelcoinc.com
JELCO is a registered trademark of JELCO, INC. Insta-Theater is a registered trademark of Milestone AV Technologies, LLC.

JELCO Custom Case Solutions



ATA 300 - Category 1 Shipping Case

Features:

- These ruggedly-built, reusable shipping cases are built to endure multiple shipments via common carrier or as checked airline baggage while safely protecting the delicate equipment inside.
- Constructed of 1/4", 3/8" or 1/2" plywood with an exterior ABS plastic laminate.
- Interior is lined with foam customized to fit your specific pieces of audiovisual equipment.
- Includes a hinged lid with two steel lid stays or a lift-off lid.



ABS Plastic Travel Case

Features:

- Similar in appearance to our ATA 300 cases but lower in weight and cost.
- ABS plastic cases are recommended for local use or transport within one's own vehicle.
- Can occasionally be used for checked baggage; but are not recommended for shipping via common carrier.
- Constructed of ABS plastic
- Interior is lined with foam customized to fit your specific pieces of audiovisual equipment.
- Includes a hinged lid



Economy ABS Plastic Travel Case

Features:

- As our least expensive custom case solution, our economy ABS travel cases are a terrific solution for transport or storage within the same building, or across town in your own vehicle.
- Economy travel cases are generally not recommended for checked luggage or for shipping via common carrier.
- Constructed of ABS plastic.
- Interior is lined with foam customized to fit your specific pieces of audiovisual equipment.
- Includes a removable lid fastened with nylon straps and buckles.



Available Options:

	Wheels						Lock				Color		
	Tilt	3.5" Non-Locking Casters	4"x 1" Locking Casters	4"x 2" Locking Casters	6"x 2" Locking Casters	None	Combo Lock	Key Lock Latches	Padlock Hasp*	None	Gray (Standard)	Black	Other
ATA 300	•	•	•	•	•	•	•	•	•	•	•	•	•
ABS Plastic	•	•	•	•	•	•	•	•	•	•	•	•	•
Economy ABS	•	•	•	•	•	•				•	•	•	•

*Lock Not Included.



Making Your Gear as Mobile as You Are.

JELCO Molded Cases



Those who know, choose Jelco.

RENTAL • TRADE SHOWS • EVENT MARKETING • HOTEL SERVICES •
CORPORATE • GOVERNMENT • EDUCATION • DIGITAL SIGNAGE •
TRAINING ROOMS • VIDEO CONFERENCING • BROADCASTING •
COURTROOMS • WORSHIP



Making Your Gear as Mobile as You Are.

JELCO Molded Cases



(Knife not included)



Standards:
MIL-STD-810F
MIL-STD-2073-10
MIL-STD-C4150 J

Rugged Shipping Cases with DIY Customizable Foam

Features:

- Injection molded, copolymer plastic construction
- 1" Layers of Commercial Grade Foam (not Cube Foam)
- Guaranteed for Life
- Watertight, Airtight, Dustproof
- EPDM gasket
- Automatic pressure relief valve
- Ergonomic, cushioned carry handle
- Stainless steel hardware
- Airline check or ship via FedEx/UPS
- Secure, easy-open latches
- Two Molded-in padlock brackets

ATA300
IP67 Submersion
DEF STAN 81-41/STANAG 4280
NATO Standard

MODEL	APPROX. WEIGHT	INSIDE DIM. (L x W x H)	LID DEPTH	BASE DEPTH	OUTSIDE DIMENSIONS
JEL-13185MF	10 lbs.	17.9" x 13.0" x 5.0"	1.4"	3.6"	19.6" x 15.6" x 5.7"
JEL-13186MF	11 lbs.	17.9" x 13.0" x 6.6"	1.4"	5.2"	19.6" x 15.6" x 7.2"
JEL-13187MF	11 lbs.	17.9" x 13.0" x 6.6"	3.0"	3.6"	19.6" x 15.6" x 7.3"
JEL-13188MF	11 lbs.	17.9" x 13.0" x 8.2"	3.0"	5.2"	19.6" x 15.6" x 8.8"
JEL-14208MF	13 lbs.	20.5" x 14.1" x 7.9"	1.4"	6.5"	22.1" x 16.6" x 8.5"
JEL-16228MF	16 lbs.	22.5" x 16.1" x 7.9"	1.9"	6.0"	25.3" x 18.6" x 8.6"
JEL-12207MWF*	15 lbs.	19.7" x 12.3" x 7.3"	1.9"	5.4"	22.2" x 14.8" x 9.0"
JEL-162210MWF*	23 lbs.	22.5" x 16.1" x 9.9"	1.9"	8.0"	25.3" x 18.6" x 11.7"
JEL-18248MWF*	24 lbs.	24.1" x 17.9" x 8.0"	1.9"	6.1"	27.3" x 20.5" x 9.7"
JEL-182412MWF*	27 lbs.	24.1" x 17.9" x 12.0"	1.9"	10.1"	27.3" x 20.5" x 13.7"
JEL-15517MWF**	27 lbs.	51.1" x 14.6" x 7.0"	3.0"	4.0"	53.8" x 17.5" x 7.6"

*includes wheels and extension handle

**includes wheels



Making Your Gear as Mobile as You Are.

450 Wheeling Rd. | Wheeling, IL 60090 toll free: 888-875-3526 | phone: 847-459-5207 fax: 847-459-5262 | www.jelcoinc.com
JELCO is a registered trademark of JELCO, INC.