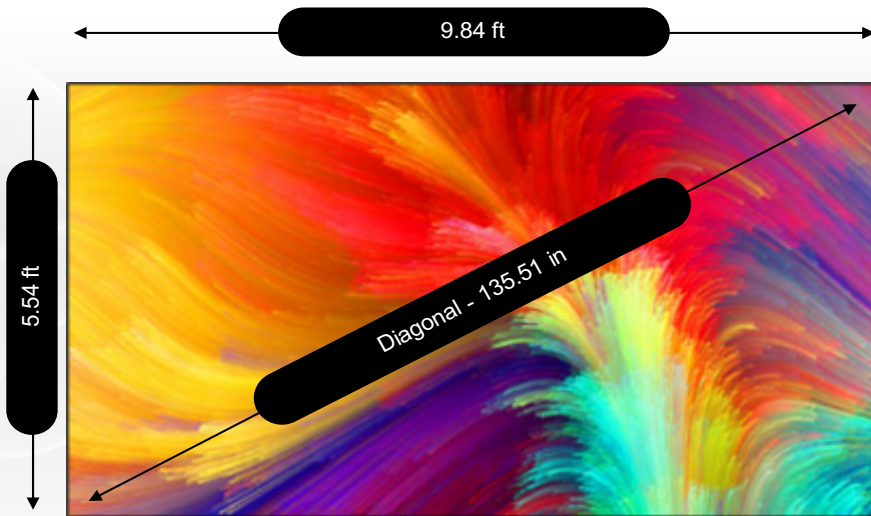


DISPLAY INFORMATION

RESOLUTION	1,920 x 1,080 px	MAX BRIGHTNESS	800nits
DIMENSIONS (WxH, Diag)	9.84 x 5.54ft, 135.51in (3000 x 1687.5, 3442mm)		
ASPECT RATIO	16:9	MAX WATTS	3,750 W
PIXEL PITCH	1.5mm	SERVICE ACCESS	Front
PANEL ARRAY	5 x 5 (25 panels total)	IP RATING	IP30
WEIGHT	288.81	SERIES	WallPaper Lite (WP)
MAX HEAT	12,787.50BTU/hr		



INFILED

Screen your dreams

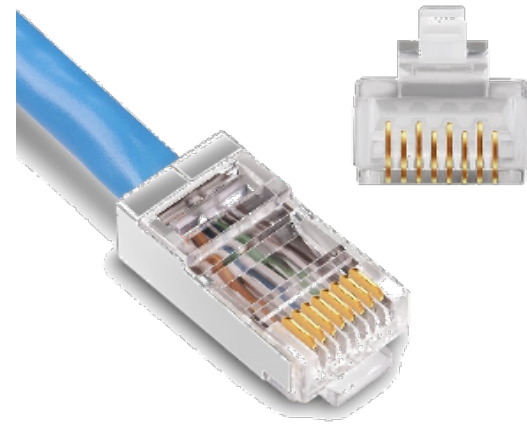
DESCRIPTION	IL-KIT109D-1.2MM16
DIMENSIONS	9.84 ft x 5.54 ft (diagonal 135.51 in)
PRODUCT	5 x 5 - WallPaper Lite (WP) 1.5mm (25 panels total)
LOCATION	TBD
DATE	October 12, 2023

PLANNING FOR DATA RUNS

The following information defines how data will be supported throughout the display. Final actual configuration is at the integrators discretion, with guidance given by INFILED.

DATA CASCADE MATH

PIXELS PER PANEL	Resolution wide	384
	Resolution tall	X 216
	Pixels per panel	82,944
MAX PANELS PER PORT	Controller port capacity	650,000
	Pixels per panel	÷ 82,944
	Maximum panels per port	7.84
Final MAXIMUM panels per port		7



GENERAL NOTES

1. Panels include cascade cabling to connect **Panel-to-Panel** for data, typically in a vertical direction.
2. **Controller-to-Panel** ethernet cabling is not included with this display. These cables are typically run, cut, and terminated onsite ahead of the installation.
3. Ethernet cables must be **Cat5e or faster**, and **do not require shielding**.
4. INFILED recommends to run 2-3 additional Ethernet lines between the display and controller for spares and future use.
5. Optimal positioning of cabling behind the display will vary based on the mounting structure. Typically the center of each column is clear to pass-the cable through the wall, towards the bottom of the display.

DATA CABLING RECOMMENDATION

1. Total data runs per column *(including redundancy, if selected)*
1 data run every column
2. Total cables recommended
7 total ethernet runs to the display (including a couple of spares)

INFILED

Screen your dreams

DESCRIPTION	IL-KIT109D-1.2MM16
DIMENSIONS	9.84 ft x 5.54 ft (diagonal 135.51 in)
PRODUCT	5 x 5 - WallPaper Lite (WP) 1.5mm (25 panels total)
LOCATION	TBD
DATE	October 12, 2023

SUPPORTING POWER FOR THIS DISPLAY

The following information defines how each panel will use power throughout the display. Power calculations are always based on maximum conditions of the display. Final actual configuration is at the integrators discretion, with guidance given by INFILED. Always consult an electrician to confirm the necessary configuration.

POWER CASCADE MATH

AMPS PER PANEL	Maximum watts per panel	150
	Operating volts	÷ 120
	Maximum amps per panel	1.25
FACTORING A SAFE-LOAD LIMIT	Mimimum amp rating	15
	Safe-load limit	X 85%
	Maximum safe amps per run	12.75
MAX PANELS PER RUN	Maximum safe amps per run	12.75
	Maximum amps per panel	X 1.25
	Actual maximum panels per run	10.2
	Final MAXIMUM panels per circuit/run	10

POWER CIRCUIT RECOMMENDATION

- Recommended circuits for the display
3 dedicated circuits
- Recommended circuits per column
1 power run for every 2 columns
- Maximum power consumption per maximum run
WATTS **1,500W (when configured with 10 panels per run)**
AMPS **13A (on 120V and when configured with 10 panels per run)**



GENERAL NOTES

- Panels include cascade cabling to connect **Panels-to-Panel** for power, typically in a vertical direction.
- Building-to-Panel** cabling to be provided by integrator to comply with local electrical code.
- Power running from **Column-to-Column** may require cabling of additional length to reach from column to column.
- Shallow wall mounts may require recessed power fixtures to accommodate plug depth.
- Recommendations provided are for reference only. All power supply details should be confirmed by a licensed electrician prior to the installation start.**

INFILED

Screen your dreams

DESCRIPTION	IL-KIT109D-1.2MM16
DIMENSIONS	9.84 ft x 5.54 ft (diagonal 135.51 in)
PRODUCT	5 x 5 - WallPaper Lite (WP) 1.5mm (25 panels total)
LOCATION	TBD
DATE	October 12, 2023

PANEL SPECIFICATIONS

About	Series	WallPaper Lite (WP)	
	Part number	IL-FISS-IRWP1.5 Lite	
	Environment	Indoor ONLY	
	Deployment style	Fixed Installation	
	Panel aspect ratio	16:9	
	Dimensions	Panel width	23.62in (600mm)
		Panel height	13.29in (337.5mm)
		Panel resolution wide	384px
		Panels resolution tall	216px
		Module width	11.81in (300mm)
Pixel Information	Module height	6.64in (168.75mm)	
	Module resolution wide	192px	
	Module resolution tall	108px	
	Transparency	0%	
	Pixel pitch	1.5mm	
	1 → Maximum brightness	800nits	
	Scan rate	1:27	
	Pixel technology	SMD	
	Common	Anode	
	Connector material	Copper	
	LED size	SMD1010	
	LED Wavelength	R: 622-629nm / G: 520-531nm / B: 471-480nm	
	LED Lens	Black LED	
	Details	1 → Maximum wattage	150W
		Average wattage	50W
1 → Maximum heat		511.5BTU/hr	
Weight		11.55lbs (5.24kg)	
IP rating (front)		IP30	
IP rating (rear)		IP30	
Data connector		RJ45	
Power connector		WAGO (770-203)	
Service access		Front	
Controller compatibility		2 → Warranty	2-year
	NovaStar	Yes	
	Brompton	0	
	Notes	Flip-chip	



GENERAL NOTES

1. Maximum brightness, wattage, and heat are calculated based on maximum potential brightness, measured with full white on screen and the controller set to 100% brightness. Typical indoor installations will run at 20-30% brightness.
2. The term of warranty support starts on equipment installation.

INFILED		Screen your dreams
DESCRIPTION	IL-KIT109D-1.2MM16	
DIMENSIONS	9.84 ft x 5.54 ft (diagonal 135.51 in)	
PRODUCT	5 x 5 - WallPaper Lite (WP) 1.5mm (25 panels total)	
LOCATION	TBD	
DATE	October 12, 2023	

CONTROLLER SPECIFICATIONS



About

Model | **MCTRL660Pro**
 Category | **Pixel-to-pixel Controller**
 Front display/control | **Yes**
 Loading capacity | **3,900,000**
 Maximum width | **3,840**
 Maximum height | **3,840**
 Layers | **2K x 1K (1)**

Operation

Operating voltage | **100~240**
 Operating temperature | **-20°C~60°C**
 Operating humidity | **10~90% RH**

Ports

Inputs | **DVI (1), HDMI 1.4 (1), 3G-SDI (1)**
 Display outputs (RJ45) | **6**
 Additional outputs | **DVI LOOP (1), HDMI LOOP (1), 3G-SDI LOOP (1), OPT (2), HDMI MONITOR (1)**

Details

Width (mm) | **483**
 Height (mm) | **55**
 Depth (mm) | **258**
 Weight (kg) | **4**

Control | **LAN (1), USB (I/O)**

Processing

Processing depth (px) | **12-Bit**
 Max pixels per port (8-bit) | **650,000**
 Max pixels per port (8-bit) | **320,000**
 Max pixels per port (8-bit) | **320,000**
 HDR | **No**
 Scaling | **No**
 GENLOCK | **No**

INFILED

Screen your dreams

DESCRIPTION	IL-KIT109D-1.2MM16
DIMENSIONS	9.84 ft x 5.54 ft (diagonal 135.51 in)
PRODUCT	5 x 5 - WallPaper Lite (WP) 1.5mm (25 panels total)
LOCATION	TBD
DATE	October 12, 2023

PARTS ^{*} *(the following parts are for one configured display)*

PANELS

25 IL-FISS-IRWP1.5 Lite WallPaper Lite 1.5mm Indoor Panel

FREE SPARE PARTS

This product includes 2% free spare modules as well as spare LEDs from the same batch,

Free Spare MODULES

Free Spare ICs

Free Spare LEDs

Free Spare Masks

CONTROLLER

1 AJBNOV000018 NovaStar MCTRL660Pro - Pixel-to-pixel Controller - 2K x 1K (1) - 6 output ports

CABLING

This display includes all cabling to inter-connect panels within the display. Cabling for all building-to-panel power cabling and controller-to-panel ethernet cabling is also included.

WARRANTY

This product is covered by factory warranty for any defects. During the warranty period identified below all defects will be repaired or replaced for free.

Neither the factory warranty or extended warranty cover any damages caused by physical impact.

1 Exwar-03I Indoor Factory Warranty (2 years total)

INFILED

Screen your dreams

DESCRIPTION	IL-KIT109D-1.2MM16
DIMENSIONS	9.84 ft x 5.54 ft (diagonal 135.51 in)
PRODUCT	5 x 5 - WallPaper Lite (WP) 1.5mm (25 panels total)
LOCATION	TBD
DATE	October 12, 2023

PARTS * *(the following parts are for one configured display)*

ACCESSORIES

MOUNT AND BEZEL

This display includes factory mount and bezel. This will enable the display to be installed on a wall, and to have the edges covered/protected. The bezel attaches to the panels and will close the display to the wall when using an INFiLED mount.


INSTALLATION SUPPORT

There is no onsite training planned for this display. Installation/build will be the responsibility of the customer or through an ECO-partner Installation company. If installation support is preferred, ask about INFiLED's Installation partners.

INFiLED

Screen your dreams

DESCRIPTION	IL-KIT109D-1.2MM16
DIMENSIONS	9.84 ft x 5.54 ft (diagonal 135.51 in)
PRODUCT	5 x 5 - WallPaper Lite (WP) 1.5mm (25 panels total)
LOCATION	TBD
DATE	October 12, 2023



IMPORTANT CONTACTS

INFILED

TBD

TBD

INFILED Group



TBD



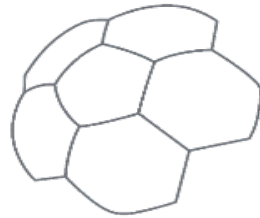
TBD



United States, INFILED Group



www.infiled.com



FOR LED QUESTIONS & SUPPORT

If you have questions about INFILED products or LED technology, contact your INFILED Sales Manager.

NOVA STAR TECHNICAL SUPPORT

North America based support for NovaStar controllers with ability to remote connect for support.



702.844.8343 (10AM - 7PM PST)



northamerica@novastar.tech

NOVA STAR

FOR CONTROLLER SUPPORT

If you have questions or need assistance with NovaStar controllers, calibration, uniformity, or troubleshooting, contact US NovaStar Technical

FOR MOUNT SUPPORT

If you require assistance with an INFILED designed mount, please contact your INFILED Sales Manager for assistance.

If using a mount manufactured by a third party company, please contact that company's technical support department.

INFILED

Screen your dreams

DESCRIPTION	IL-KIT109D-1.2MM16
DIMENSIONS	9.84 ft x 5.54 ft (diagonal 135.51 in)
PRODUCT	5 x 5 - WallPaper Lite (WP) 1.5mm (25 panels total)
LOCATION	TBD
DATE	October 12, 2023

INFILED

Screen your dreams

ABOUT US

INFILED is headquartered in Shenzhen and registered under the full name Shenzhen Infiled Electronics Co., Ltd. It is a high-tech enterprise specialized in developing and manufacturing large LED video equipment.

Focusing on independent innovation and continuous improvement, INFILED has always occupied a leading position in the industry and the number of obtained patents has reached over 178.

INFILED's product application range covers advertisement, transportation, sports, events, command & control, corporate branding and meetings, creative applications and so much more. The products have been installed in over 85 countries and have been CCC, CE, ETL, FCC, RoHS and TUV certified.

Using the most advanced production equipment and the most reliable components, INFILED delivers the highest quality and most reliable equipment available. INFILED strictly carries out the ISO9001 Quality Management System, Total Quality Management System, ISO14001 Environment Management system and OHSAS18001 Occupational Health and Safety Management System. Throwing a sales and service net over the whole world nowadays, INFILED currently has a Global Service Center in Hong Kong and distributors, subsidiary and representative offices in Beijing, Shanghai, Yunnan, Netherlands, Australia, the United States, the United Kingdom, Middle East, South Africa, South America and Japan , offering customers the best service and user experience.

Based on the principle of "Five-Star", INFILED is striving to be a top brand of LED screen manufacturer to enlighten the world with a visual feast!

