

**INFILED**  
Screen your dreams

**15**  
Consistent Excellence



**WT**  
S E R I E S

## RELIABLE INDOOR LED DISPLAY SOLUTION



The WT series combines the excellent performance of our COB display technology, and is anti-collision, dust and moisture proof for indoor Micro & Mini fine pixel pitch applications.

The WT series adopts a 16:9 standard display ratio, with a high refresh rate of 3840Hz and outstanding 15-bit grayscale, showing extraordinary color expression. Meanwhile, seamless splicing, and no noticeable visual black seam, giving you an extremely comfortable viewing experience. Moreover, cold screen technology extended the product life and improved the near-screen experience. The WT series is the best Micro & Mini-pitch solution for conferences, monitoring, command centers, studios, medical institutions, digital exhibition halls, and other scenes.

A great display solution for indoors, well-designed quality screens.

Indoor applications.



Light & Slim



Cold Screen



HD



High Protection

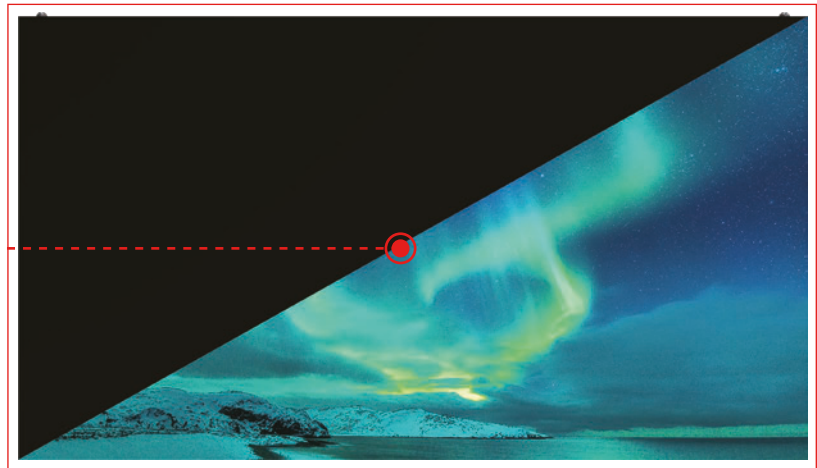
Pixel Pitch	0.78, 0.93, 1.25 mm
Brightness	600-800 nits
Cabinet size (WxHxD)	600 x 337.5 x 29.4 mm



## KEY FEATURES

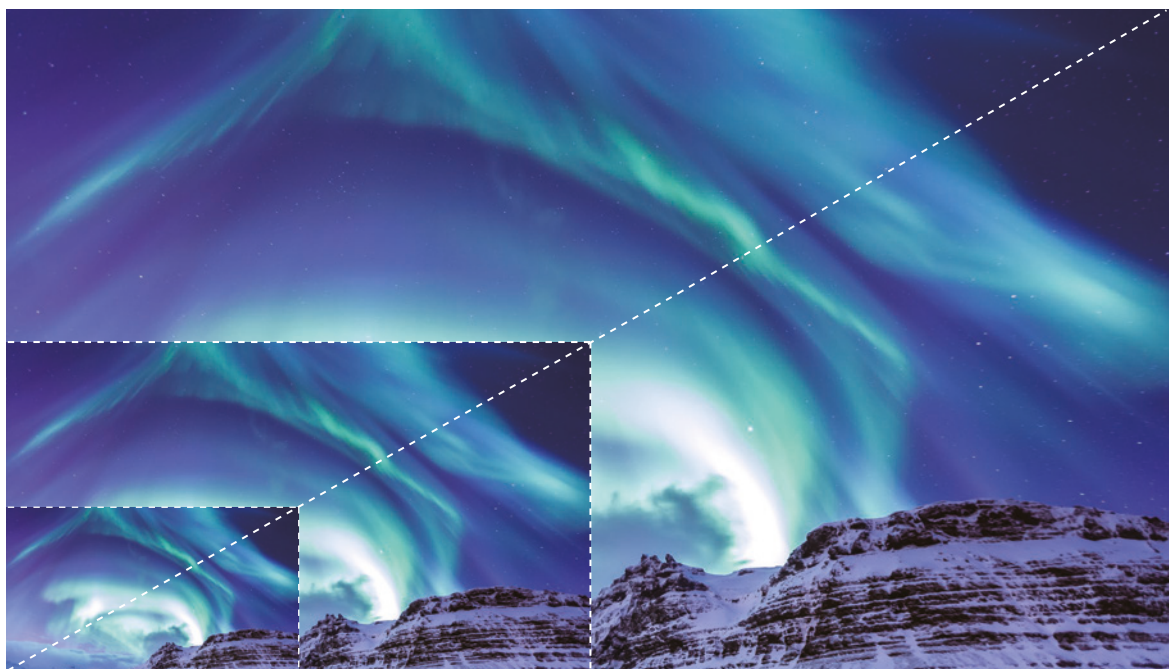
### Excellent black screen

Micro LED chips bring ultra-high contrast ratio, contrast ratio up to 100,000:1.



### Ultra HD technology

16:9 standard display ratio, 160° viewing angel, with 3840Hz high refresh rate, and an outstanding 15-bit grayscale. This module can be easily fine-tuned and offers a seamless performance of a superb 35.2T display color and color gamut (DCI coverage) up to 95.97%.



Full HD 1920×1080

4K 3840×2160

8K 7680×4320

16:9

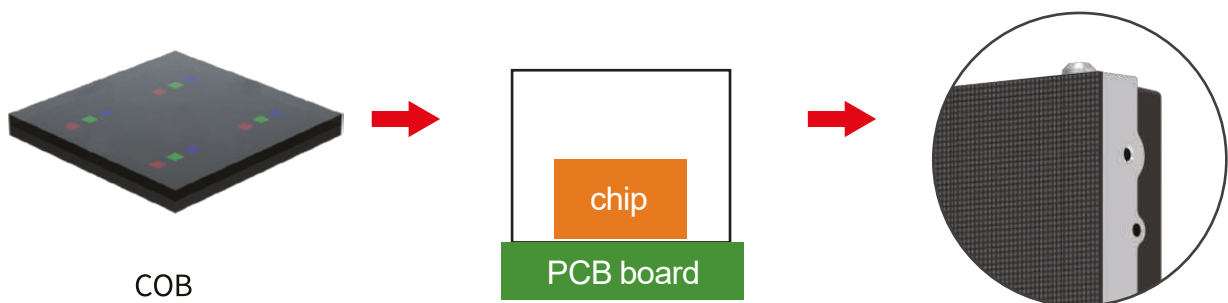
## COLD SCREEN TECHNOLOGY

The flip-chip technology ensures energy saving and extends the LED life cycle.



## High Protection

The COB LED technology highly protects the LED surface with anti-collision, dust-proof, and moisture-proof, which makes it robust and sturdy.



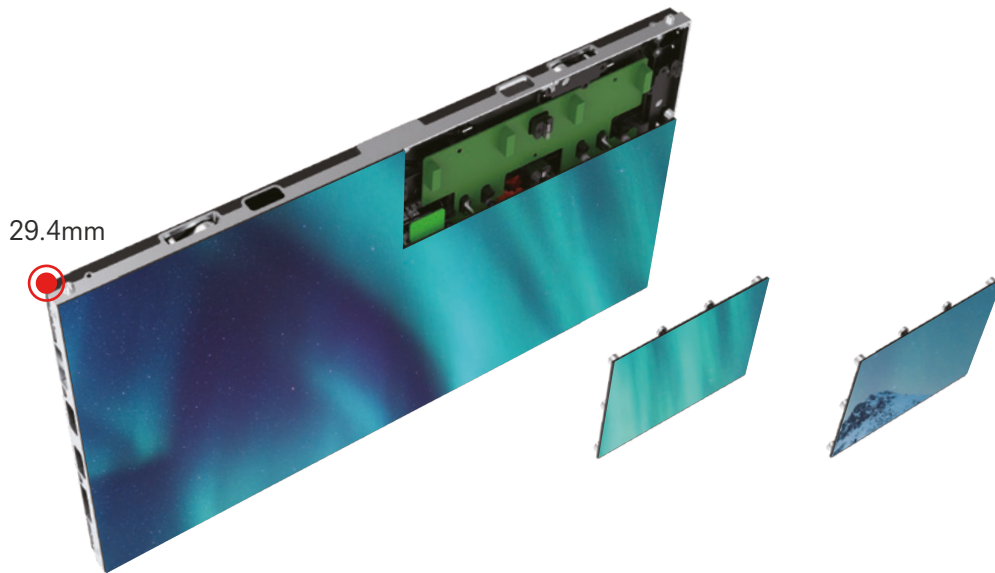
COB

COB packaging technology

Anti-collision, dust-proof, moisture-proof

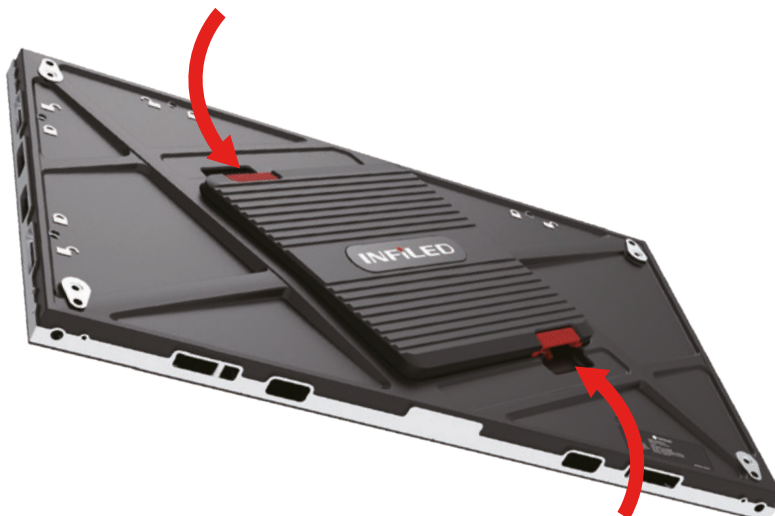
## Light, Slim and Flexible

The module flatness is less than 0.05mm, the cabinet thickness is 29.4mm, and weights only 4kg. The light and slim cabinet design with the adjustable mounting frames, makes the installation process faster and convenient.



## Low Maintenance Loss

Unlike the standard Micro-Pitch LED screen, the WT series supports receiving cards and power supplies rear maintenance. Meanwhile, beside front service, the power and network cables connect from the back, significantly reducing maintenance losses.



## HDR Technology Optional

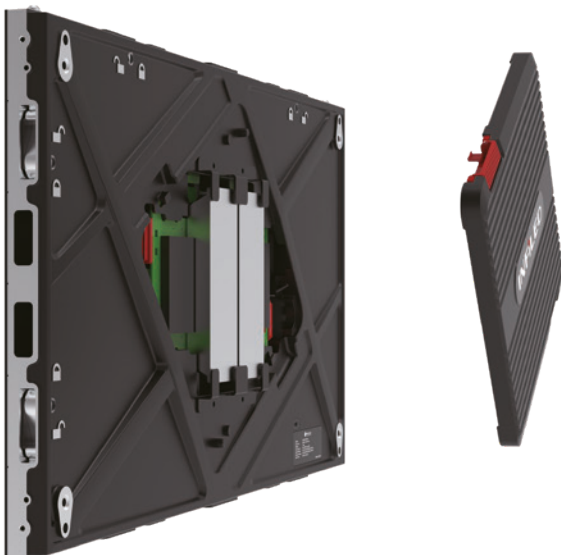
The WT series comes optional with HDR10 Technology, it could effectively improve color reproduction and contrast. HDR has a more significant visual impact than SDR. More accurate colors, smoother light, color shading, and more detailed images.

SDR

HDR



## Power and data backup OPTIONAL



The optional backup power and the signal loop guarantee the LED screen performs safely.

## Customization Features

Provide different levels of configuration to meet customer needs, including different performance and wall-touching interactive function.



## SPECIFICATIONS

Model Number	WT0.9COB	WT1.25COB	WT0.78M4	WT0.93M4
Pixel Pitch	0.93mm	1.25mm	0.78mm	0.93mm
Physical Density	1,137,777 pixels/m <sup>2</sup>	640,000 pixels/m <sup>2</sup>	1,638,400 pixels/m <sup>2</sup>	1,137,777 pixels/m <sup>2</sup>
LED Arrangement	Flip chip COB	Flip chip COB	IMD2X2	IMD2X2
Module Dimensions	150x168.75mm	150x 168.75mm	150x112.5mm	300x168.75mm
Module Resolution	160 x 180pixels	120x 135 pixels	192 x 144pixels	320 x180pixels
Cabinet Dimensions	600 x 337.5 x 29.4 mm	600 x 337.5 x 29.4 mm	600 x 337.5 x 29.4 mm	600 x 337.5 x 29.4 mm
Cabinet Resolution	640x 360pixels	480 x 270 pixels	768 x 432 pixels	640 x 360 pixels
Cabinet Weight	4kg ± 0.2kg	4kg ± 0.2kg	5.6kg	5.6kg
Brightness	600nits	600nits	600nits	800nits
Max. Power Consumption	60w/panel	60w/panel	90w/panel	100w/panel
Avg. Power Consumption	20w/panel	20w/panel	30w/panel	33w/panel
Viewing Angle	160°/160°	160°/160°	160°/160°	160°/160°
Operating Power Source	100-240V AC, 50/60Hz	100-240V AC, 50/60Hz	100-240V AC, 50/60Hz	100-240V AC, 50/60Hz
Operating Temperature	-10°C~+45°C	-10°C~+45°C	-10°C~+45°C	-10°C~+45°C
Refresh Rate	3,840Hz	3,840Hz	3,840Hz	3,840Hz
IP Rating	IP30	IP30	IP30	IP30
Signal Input Source		DVI, HDMI, DP, SDI		
Certification		CE, FCC, RoHS, ETL		

The product specifications can be customized

© Copyright 2023 INFILED. INFILED is a trademark of SHENZHEN INFILED ELECTRONICS Co, LTD. The information contained herein is subject to change without notice. INFILED shall not be liable for technical or editorial errors or omissions contained herein. For more information, please contact your local sales manager. March 2023





Shenzhen HQ | Barcelona | Dubai | Rotterdam | Los Angeles | Kuala Lumpur | Frankfurt

For more information, contact:  
[info.emea@infiled.com](mailto:info.emea@infiled.com)



[www.infiled.com](http://www.infiled.com)