



AE Series Bracket and Array Frame Handbook

	Page
MTU U-BRACKETS -- Dimensional Drawings	
MTU-1	2
MTU-2	2
MTU-3	3
MTU-4	3
MTU-15	4
MTU-16	4
MTU-18	5
MTU-25	5
MTU-26	6
MTU-28	6
PAF PLANAR ARRAY FRAMES	
Front View of Typical Planar Array.....	7
PAF Crossreference by Model.....	8
PAF-1K	
Dimensional Drawing, Model Compatibility & Kit Inclusions.....	6
Array Configurations.....	7
PAF-2K	
Dimensional Drawing, Model Compatibility & Kit Inclusions.....	8
Array Configurations.....	9
PAF-3K	
Dimensional Drawing, Model Compatibility & Kit Inclusions.....	10
Array Configurations.....	11
PAF Swivel Ring Fitting	
Drawing, Working Loads, Application Information.....	12

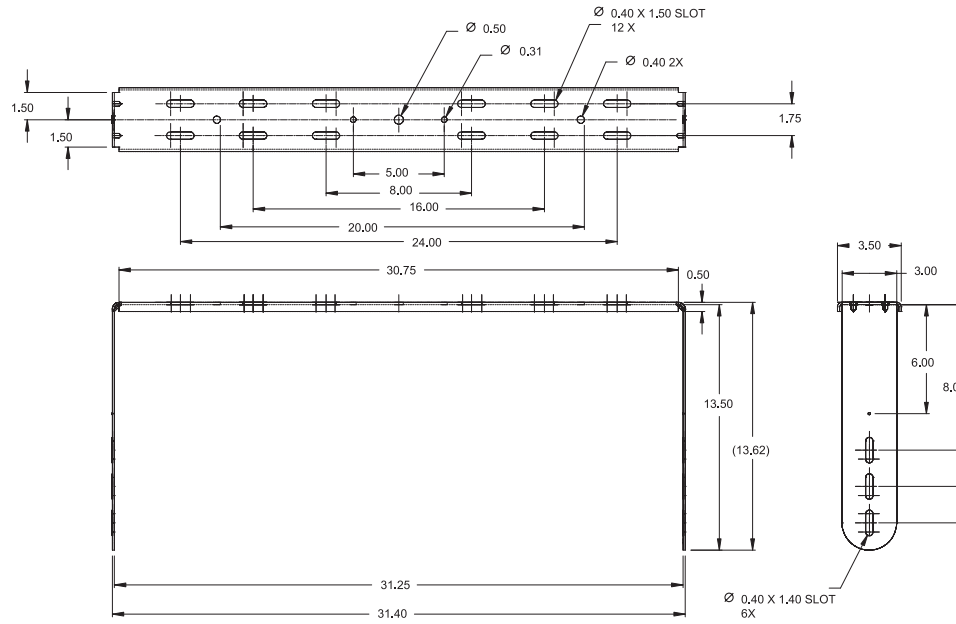
CAUTION

Installing speakers should only be undertaken by trained and qualified personnel. Refer to JBL Tech Note Vol 1, #14, "Basic Principles for Suspending Loudspeaker Systems", downloadable from www.jblpro.com/pages/tech_lib.htm. JBL Professional is not responsible for the use, misuse or misapplication of these products.

MTU U-Brackets

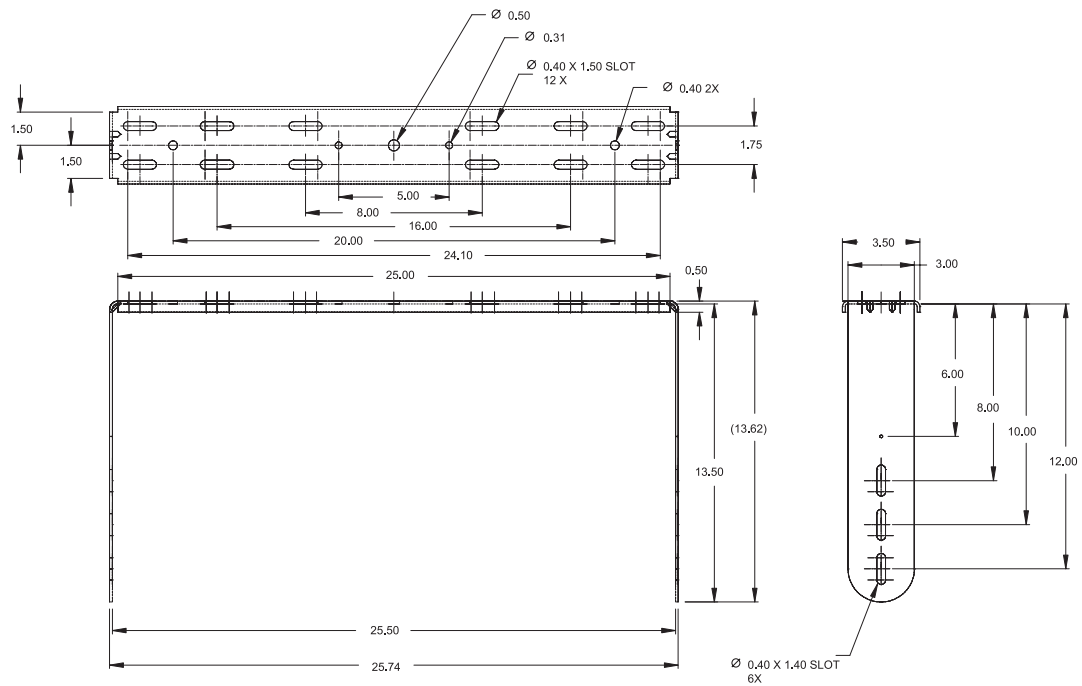
MTU-1

MTU-1 fits AM5215 and AM7215 models



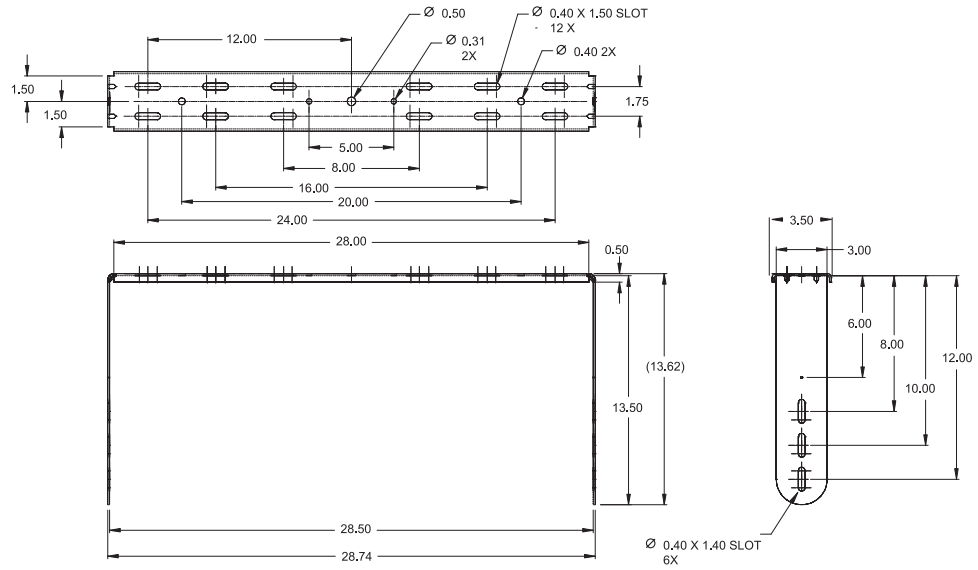
MTU-2

MTU-2 fits AC2215 models



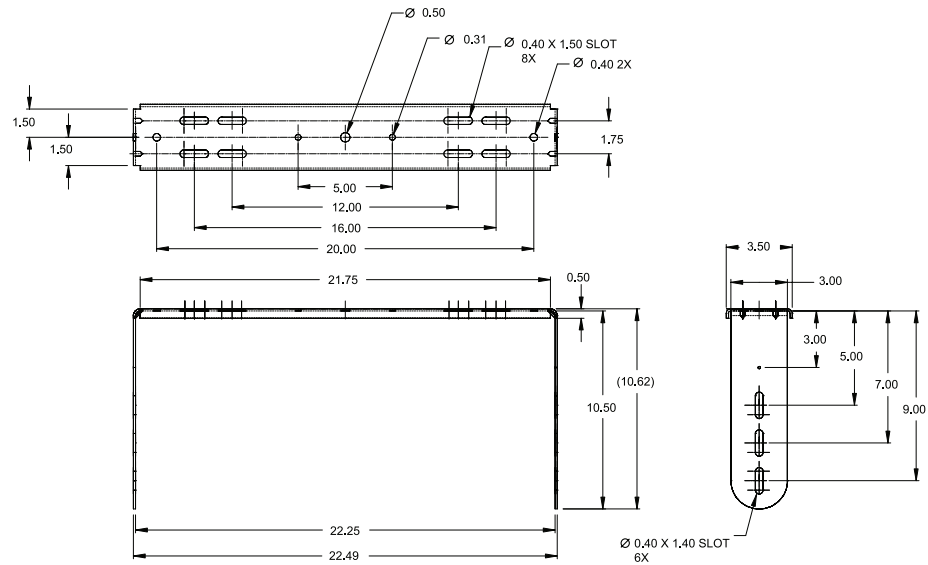
MTU-3

MTU-3 fits AM5212 and AM7212 models



MTU-4

MTU-4 fits AC2212 models

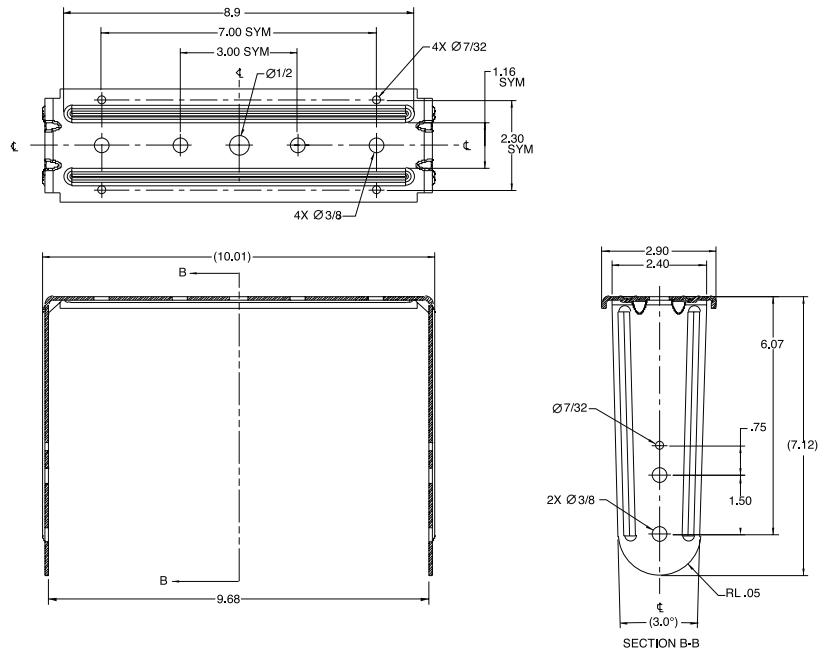


MTU U-Brackets

MTU-15

MTU-15 fits AC15 models

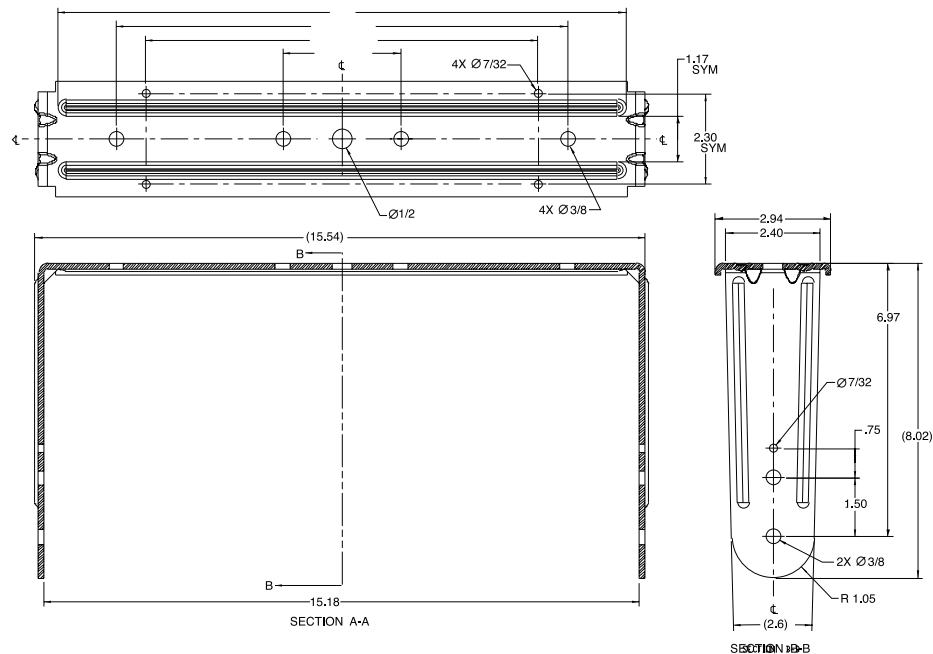
U-BRACKET - AC15



MTU-16

MTU-16 fits AC16 models

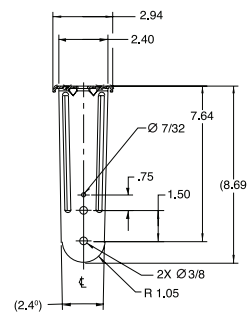
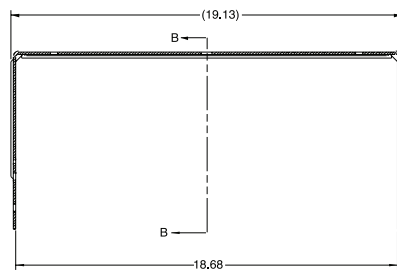
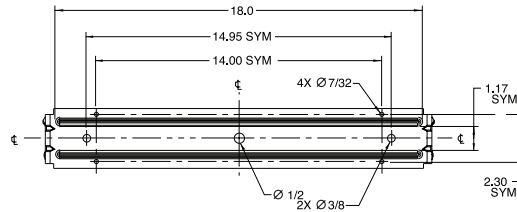
U-BRACKET - AC16



MTU-18

MTU-18 fits AC18 models

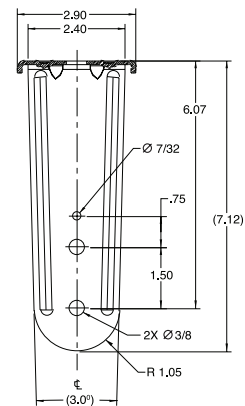
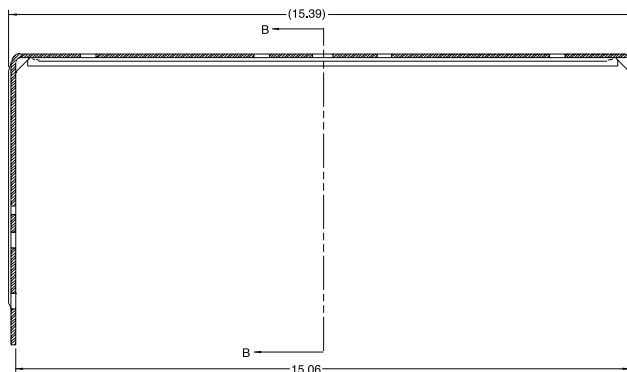
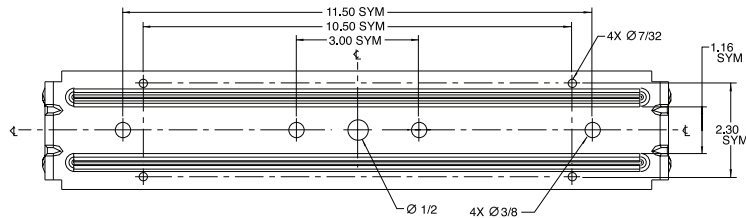
U-BRACKET - AC18



MTU-25

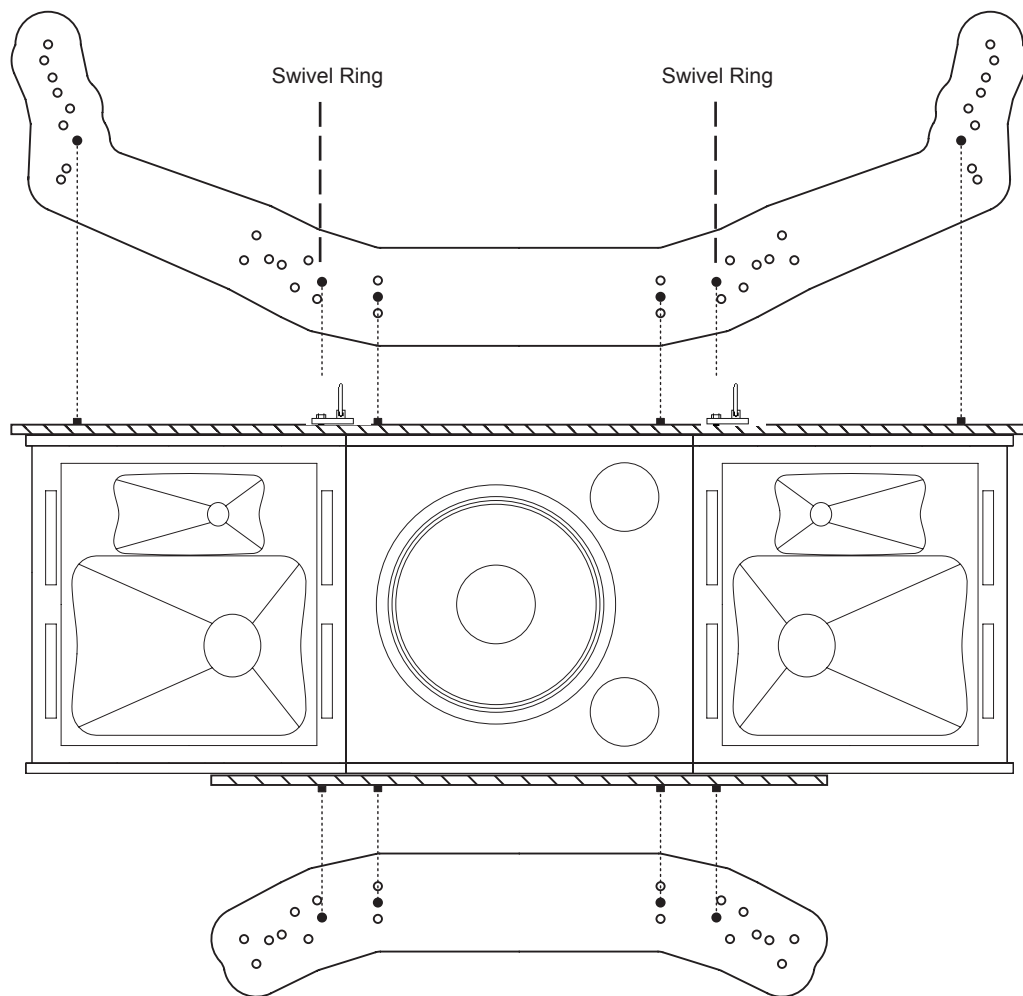
MTU-25 fits AC25 models

U-BRACKET - AC25



PAF Planar Array Frames

Front View of Typical Planar Array (Exploded View for Clarity)



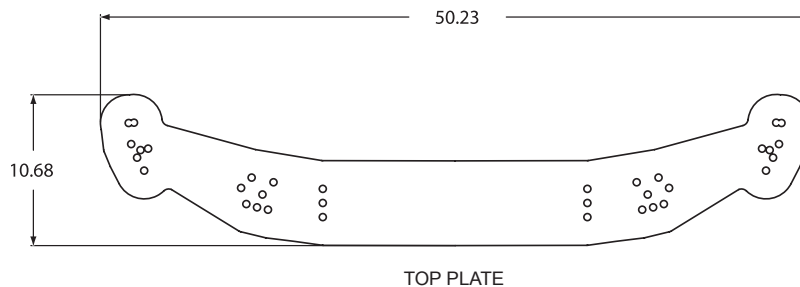
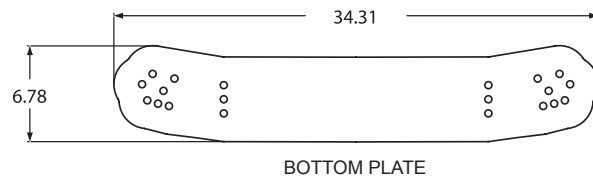
PAF CROSSREFERENCE BY MODEL

<u>Loudspeaker</u>	<u>PAF</u>	<u>Arrays With:</u>
AM7315 (38.1" high)	PAF-2K	OUTER CABINETS: 2 pcs AM7315/64 or AM7315/95 (horns rotated) CENTER CABINET: ASB6128V
	PAF-3K	3-WIDE: 3 pcs AM7315/64 (horns rotated) or AM7315/95 (horns rotated, slight overlap)
AM7200 (21.6" high)	PAF-2K	OUTER CABINETS: 2 pcs AM7200/64 or AM7200/95 (horns rotated) CENTER CABINET: ASB6118
	PAF-3K	OUTER CABINET: 2 pcs AM7200/64 or AM7200/95 (horns rotated) CENTER CABINET: AL7115 3-WIDE: 3 pcs AM7200/64 (horns rotated) or AM7200/95 (horns rotated, slight overlap)
AC2212 (21.6" high)	PAF-1K	OUTER CABINETS: 2 pcs AC2212/64 or AC2212/95 (overlap) CENTER CABINET: ASB6118
AL7115 (21.6" high)	PAF-3K	OUTER CABINETS: AM7200/64 or AM7200/95 (horns rotated) CENTER CABINET: AL7115 3-WIDE: 3 pcs AL7115
ASB6118 (21.6" high)	PAF-1K	OUTER CABINETS: 2 pcs AC2212/64 or AC2212/95 (overlap) CENTER CABINET: ASB6118
	PAF-2K	OUTER CABINETS: 2 pcs AM7200/64, AM7200/95 (horns rotated) or AM4200/95 (horns rotated) CENTER CABINET: ASB6118
ASB6128V	PAF-2K	OUTER CABINETS: 2 pcs AM7315/64 or AM7315/95 (horns rotated) CENTER CABINET: ASB6128V

PAF-1K Kit

Weight = 15.2 kg (34 lbs)

Dimensional Diagram



AE Speaker Model Compatibility

OUTER CABINETS: **AC2212** or same-sized cabinet.

CENTER CABINET: **ASB6118** or same-sized cabinet.

Note: All three cabinets in the array must be the same height. Both the TOP and BOTTOM PAF Plates must be attached withbolts to ALL 3 cabinets.

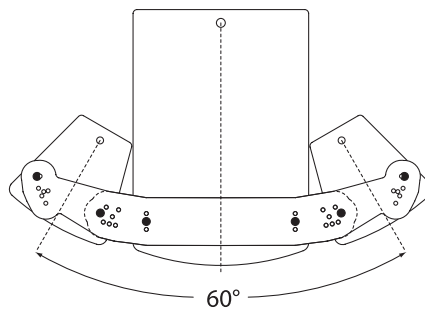
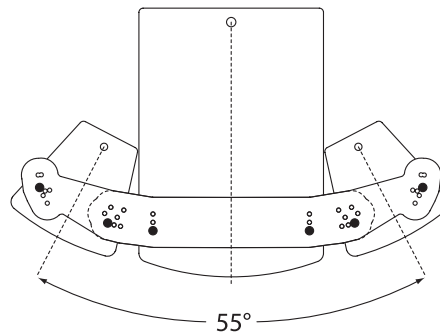
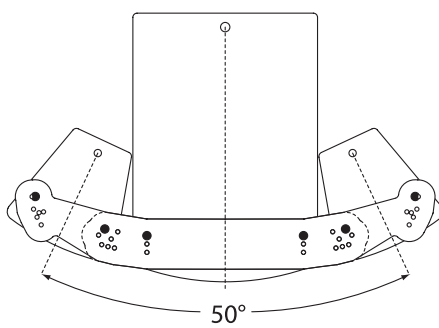
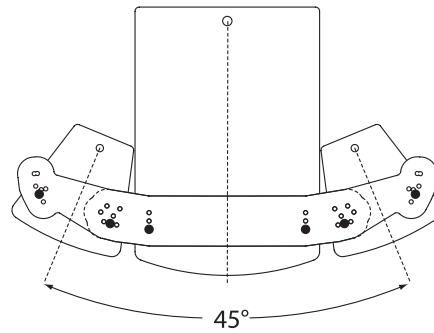
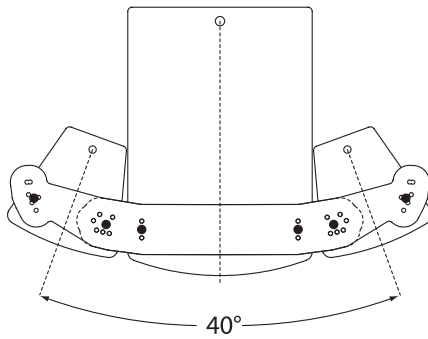
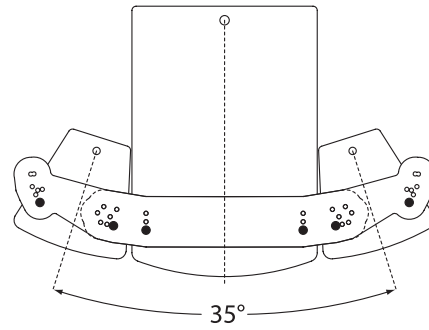
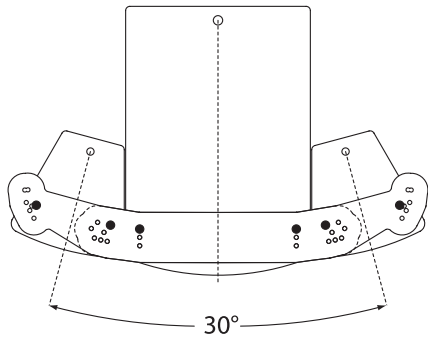
Kit Includes:

- 1 pc PAF-1T Top Plate
- 1 pc PAF-1B Bottom Plate
- 2 pcs M10 Alloy Offset Swivel Ring Fittings (*see drawing, Pg 12*)
- 2 pcs M10 x 1.5 x 35 mm Forged Shoulder Eyebolts
- 10 pcs M10 x 1.5 x 40 mm Hex Head Cap Screws (grade CL8.8)
- 10 pcs M10 Splitwashers

PAF-1K

Array Configurations

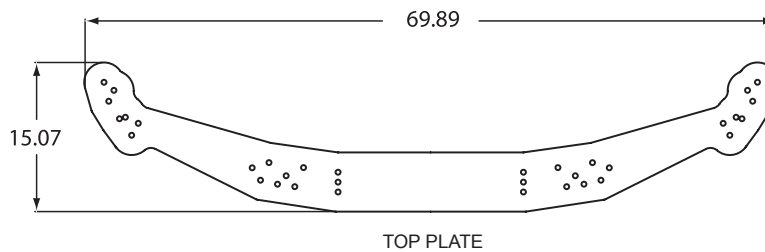
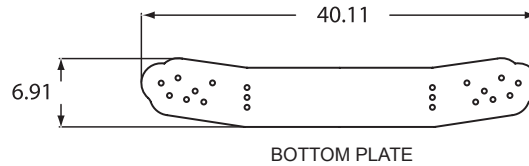
Splay Range of Outside Cabinets = 30° to 60°



PAF-2K Kit

Weight = 35 kg (77 lbs)

Dimensional Diagram



AE Speaker Model Compatibility

OUTER CABINETS: **AM7315**, **AM7200** or same-sized cabinet.

CENTER CABINET: **ASB6118**, **ASB6128**, **ASB6128V**, **ASB4128**, or same-sized RECTANGULAR footprint cabinet.

Note: All three cabinets in the array must be the same height. Both the TOP and BOTTOM PAF Plates must be attached withbolts to ALL 3 cabinets.

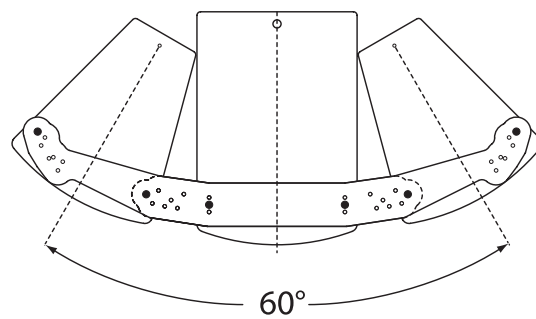
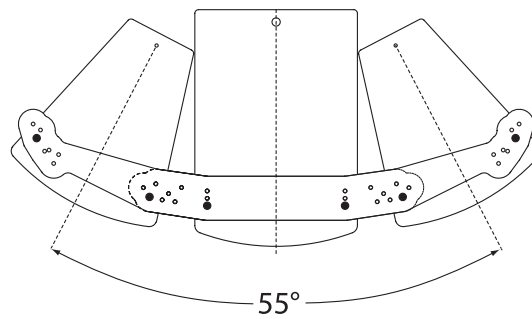
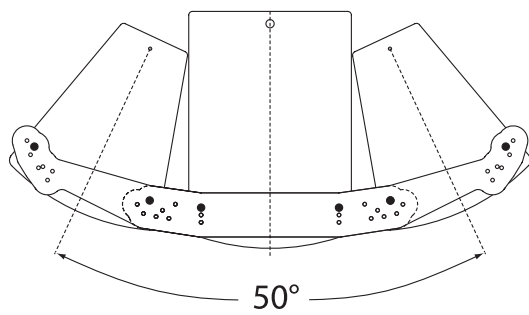
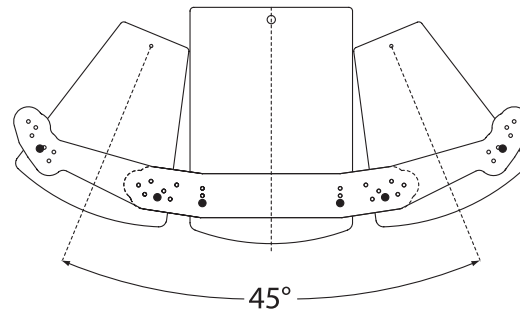
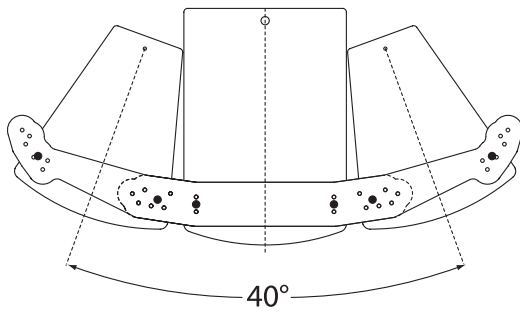
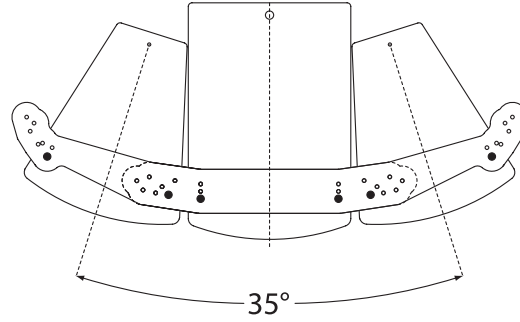
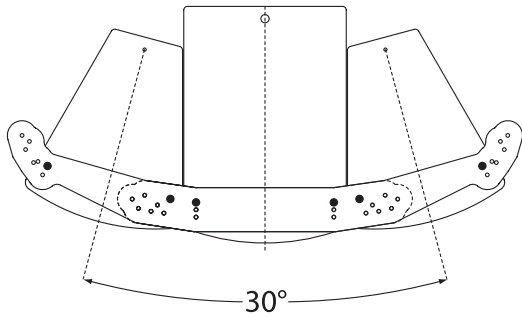
Kit Includes:

- 1 pc PAF-2T Top Plate
- 1 pc PAF-2B Bottom Plate
- 2 pcs M10 Alloy Offset Swivel Ring Fittings (*see drawing, Pg 12*)
- 2 pcs M10 x 1.5 x 35 mm Forged Shoulder Eyebolts
- 10 pcs M10 x 1.5 x 40 mm Hex Head Cap Screws (grade CL8.8)
- 10 pcs M10 Splitwashers

PAF-2K

Array Configurations

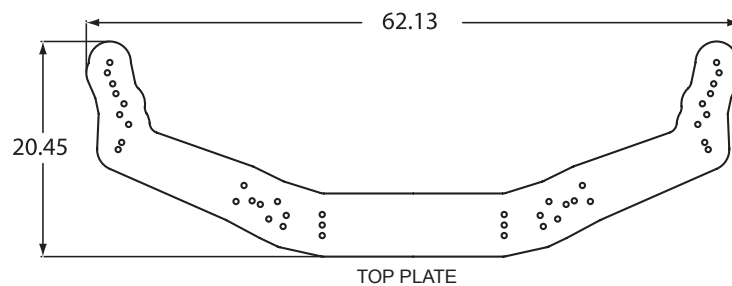
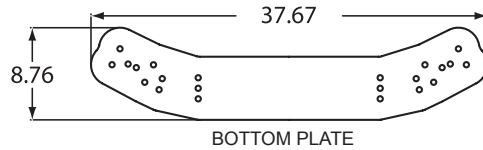
Splay Range of Outside Cabinets = 30° to 60°



PAF-3K Kit

Weight = 22.7 kg (50 lbs)

Dimensional Diagram



AE Speaker Model Compatibility

OUTER CABINETS: **AM7200**, **AM7315**, or same-sized cabinet.

CENTER CABINET: **AL7115**, **AM7315**, **AM7200**, or same-sized TRAPEZOIDAL footprint cabinet.

(Includes 3-wide arrays of trapezoidal speakers: AM7200, AM7315, or AL7115.)

Note: All three cabinets in the array must be the same height. Both the TOP and BOTTOM PAF Plates must be attached withbolts to ALL 3 cabinets.

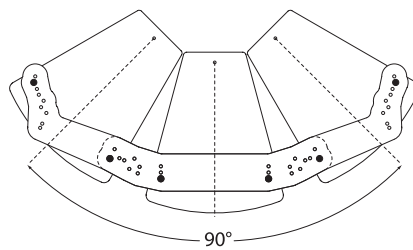
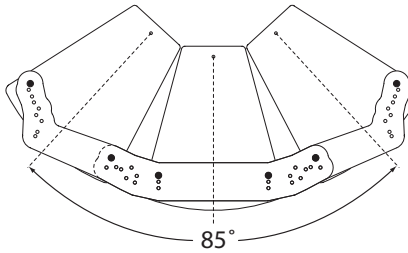
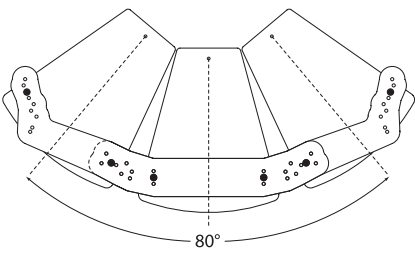
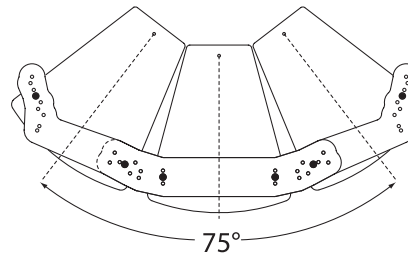
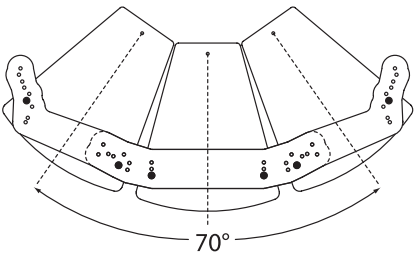
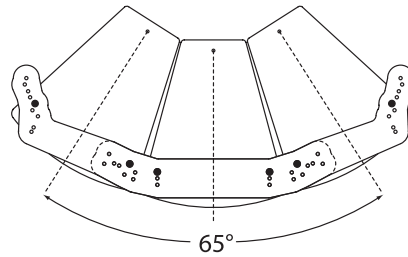
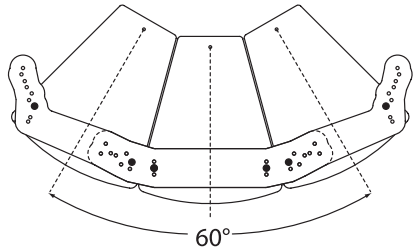
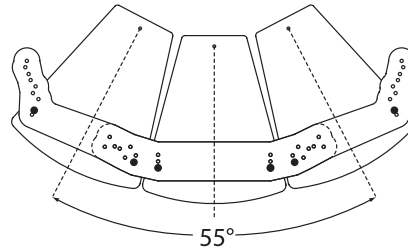
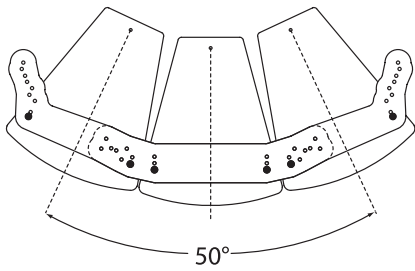
Kit Includes:

- 1 pc PAF-3T Top Plate
- 1 pc PAF-3B Bottom Plate
- 2 pcs M10 Alloy Offset Swivel Ring Fittings *(see drawing, Pg 12)*
- 2 pcs M10 x 1.5 x 35 mm Forged Shoulder Eyebolts
- 10 pcs M10 x 1.5 x 40 mm Hex Head Cap Screws (grade CL8.8)
- 10 pcs M10 Splitwashers

PAF-3K

Array Configurations

Splay Range of Outside Cabinets = 50° to 90°





JBL Professional
8500 Balboa Blvd.
Northridge, CA 91329
(818) 894-8850

PROFESSIONAL

H Harman International
Professional Division

AE BRKT HNDBK 09/10