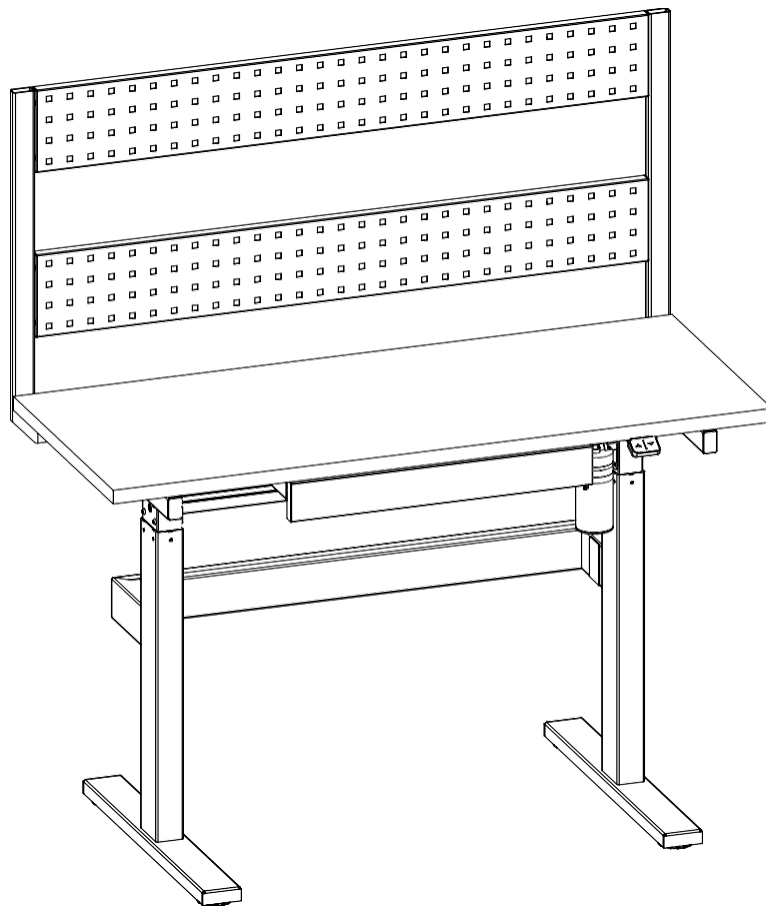


# HANOVER®

## Assembly & Care Guide For Motorized Work Bench

Model: HGS001-\*\*\*



## Work Bench Assembly Instructions

The model number of your bench is printed on the side of your cart on.

Always use this number to identify your bench.

Thank you for your purchase of this quality storage furniture. With proper use and care, your bench will provide you with years of use. Please follow the instructions on how to assemble and disassemble your bench. If you should have any problems with your bench DO NOT return it to the place of purchase. Please refer to the trouble shooting section of this manual or call our toll free number: **877-397-5144** and a customer service representative will assist you.

### Your Packages Includes:

1 Desktop, 2 Lifting Columns, 2 Feet, 1 Hand Switch, 1 Backboard, 1 Drawer & Hardware

**Please read all instructions completely** before assembling your bench.

### Technical Specifications:

Column Stage	2
Max. Weight Capacity	500lbs
Maximum speed	0.50 in/s
Input voltage	100-240V
Minimum height	30in
Maximum height	43in
Desktop size	length 47 in width 23.5in
Usage frequency	Continuous operation for 2 mins at most after pause for 18 mins
Usage temperature	32°F- 104 °C

## Table of Contents

Safety Information

Parts Lists and Breakdowns

Assembling the Bench

Installing the Backboard

Installing the Drawer

Trouble Shooting

Warranty

### Safety Information

- Power Supply: AC100V-240V, 50/60HZ.
- Check carefully to ensure correct and complete assembly before using.
- Be familiar with all functions and program settings before first use.
- Unplug the power supply before cleaning.
- Dust the surface with a dry cloth.
- Slight noise caused by the V-ribbed belt or brake system due to structure will not have any effect on the use of the equipment.
- Keep children away from motorized height adjustable desks, control units, and handsets to avoid risk of injury and electric shock.
- Keep all electrical components away from liquids.
- Do not sit or stand on the bench frame.
- Do not crawl or lie under the bench frame.
- Do not place any objects taller than 20" underneath the bench.
- Do not open any of the components; legs, control box, or switch box, to avoid the risk of injury or electric shock.
- In the event of a power outage or if the power cord is unplugged, a manual reset may be necessary. See reset procedure in troubleshooting section.
- This motorized adjustable bench has electric motors and is designed for use in dry areas only.
- The bench height is adjustable so that it can be positioned at the most ergonomically suitable height.
- Any other use is at user's risk.

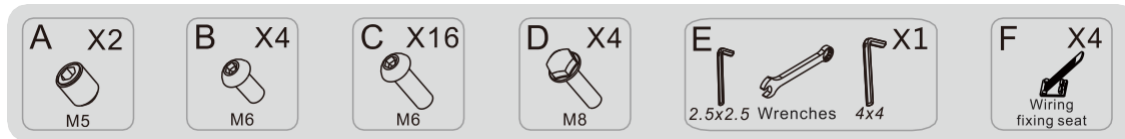
## Parts List

### Tools Required:

(2) Allen Key Wrenches and (1) Standard Wrench (included)

### Hardware Included:

### Bench:



### Backboard:

No.	Image	Spec.	Qty.
A		M6	12




### Storage Drawer:

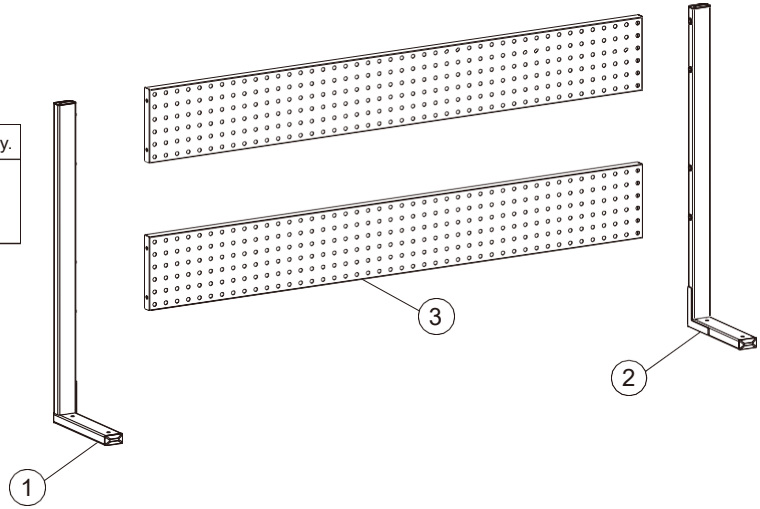
No.	Image	Spec.	Qty.
A		M6	4

### Bench Parts List:

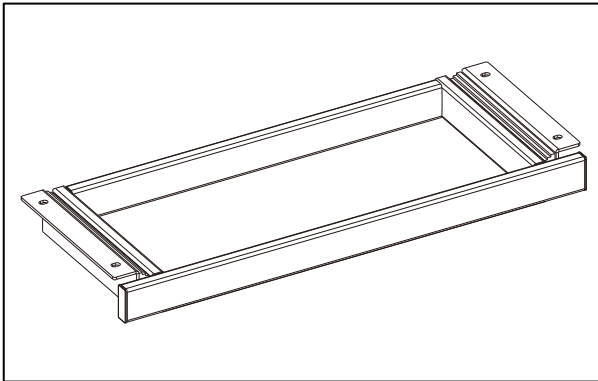
Component list					Installation instruction				
No.	Part		Qty	No.	Part		Qty		
①			1	②			1		
		Desktop				Lifting column			
	No.	Part	Qty	No.	Part	Qty	No.	Part	Qty
③			1	④		2	⑤		1
		Lifting column				Feet			Hand Switch
⑥			1	⑦		1	⑧		1
		Support Beam				Cover			Transmission tube
⑨			1	⑩		1			
		Transmission rod				Power cable			

## Backboard Parts List:

No.	Part	Qty.	No.	Part	Qty.
①	 Left supporting tube	1	②	 Right supporting tube	1
③	 Peg board	2			



## Drawer Parts List:



# Bench Assembly Instructions

## Step 1: Installing the Lifting Column

**STEP 1** Install the Lifting Columns

C x8  
E 4x4

2 3 1

E C

! When installing, pay attention to keep the height of the left and right columns the same.

Connect the left and right uprights (2) (3) to the desktop (1) with screws (C), and lock them with a 4 x 4 wrench (E).

## Step 2: Installing the Feet

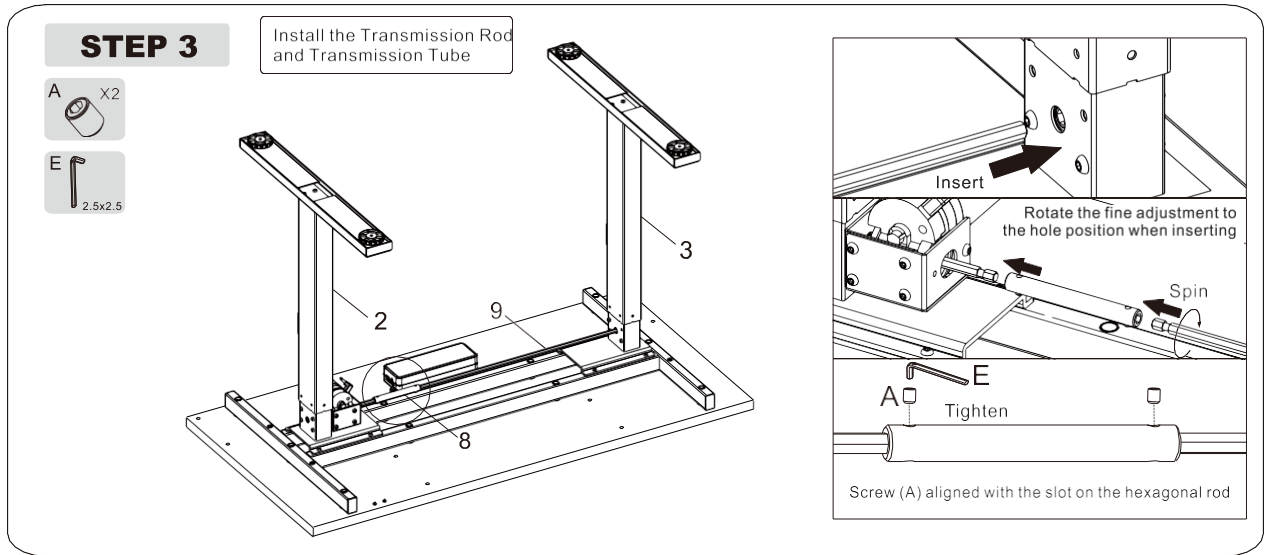
**STEP 2** Install the Feet

C x8  
E 4x4

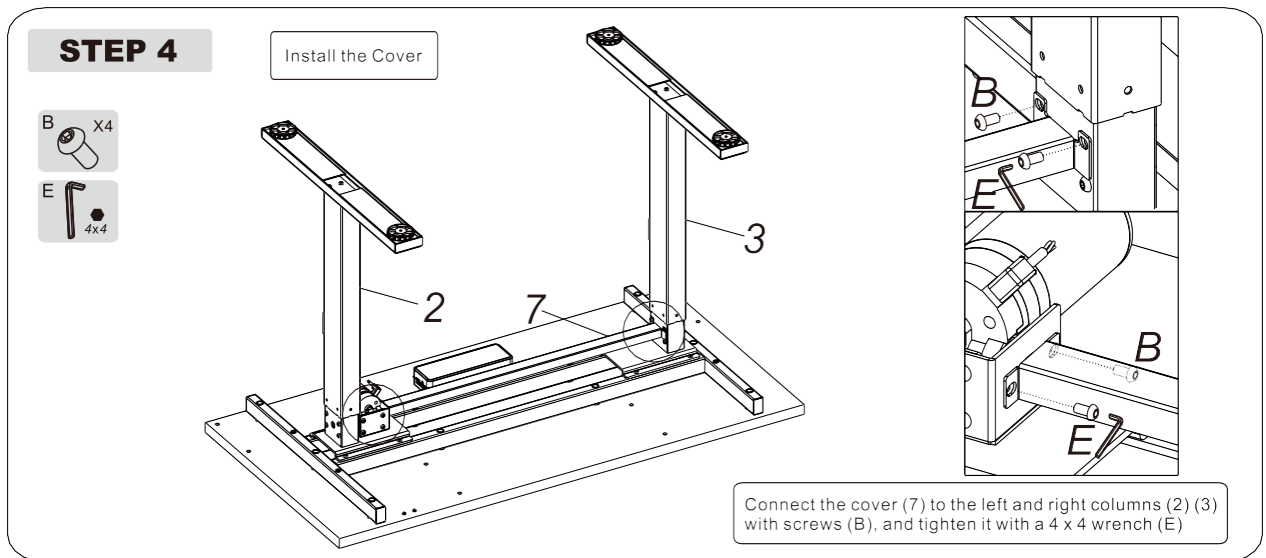
E C 4 2 3

Connect the left and right columns (2) (3) with screws (C) to the feet (4), and lock them with a 4x4 wrench (E).

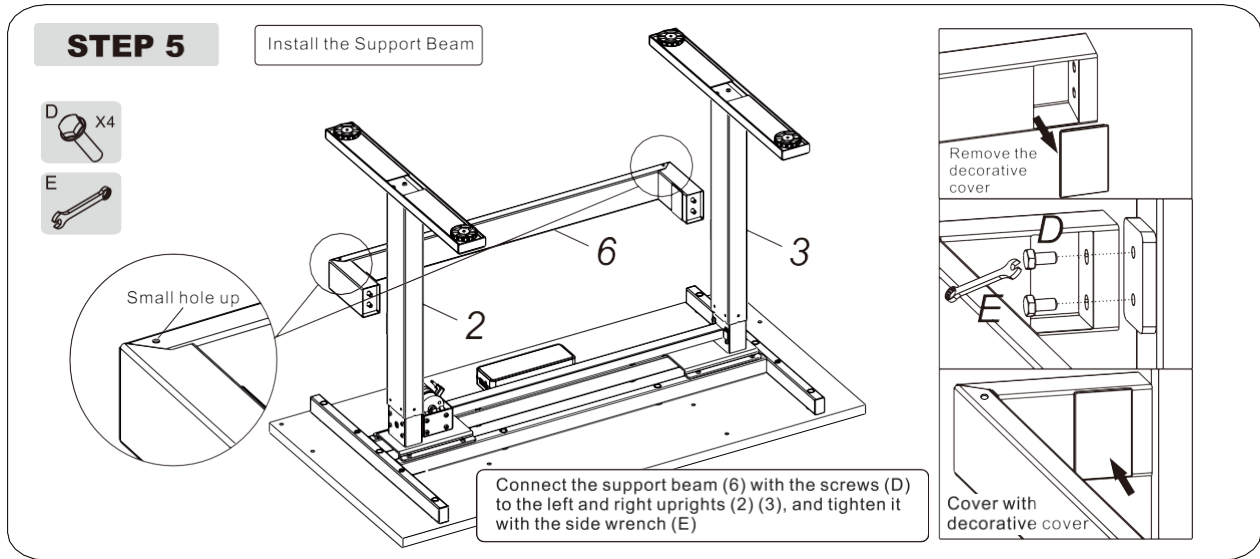
### Step 3: Installing the Transmission Rod and Tube



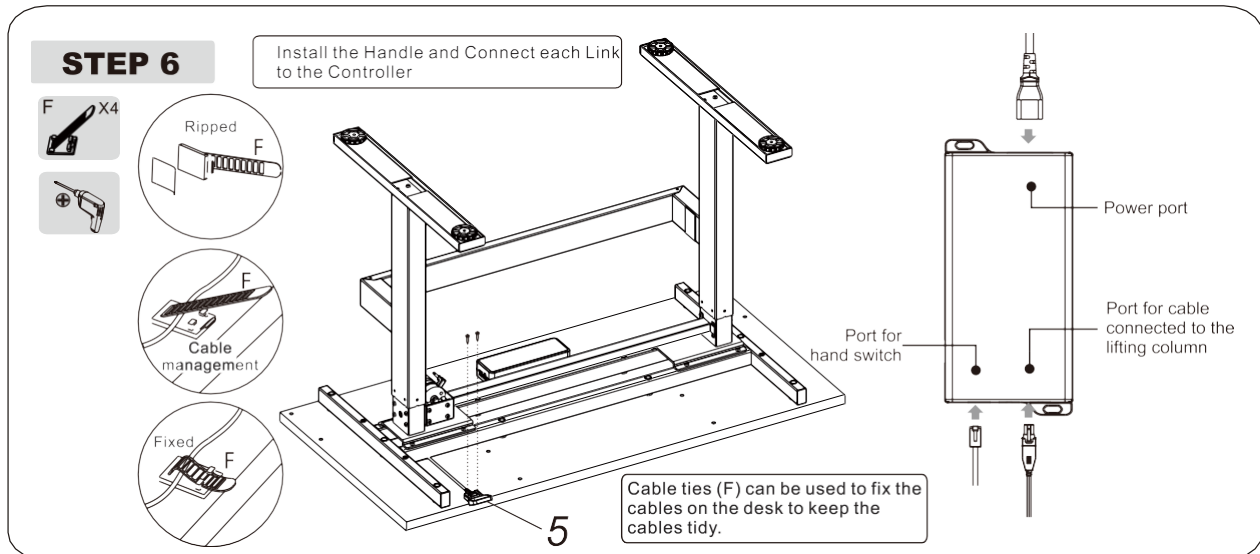
### Step 4: Installing the Cover



## Step 5: Installing the Support Beam



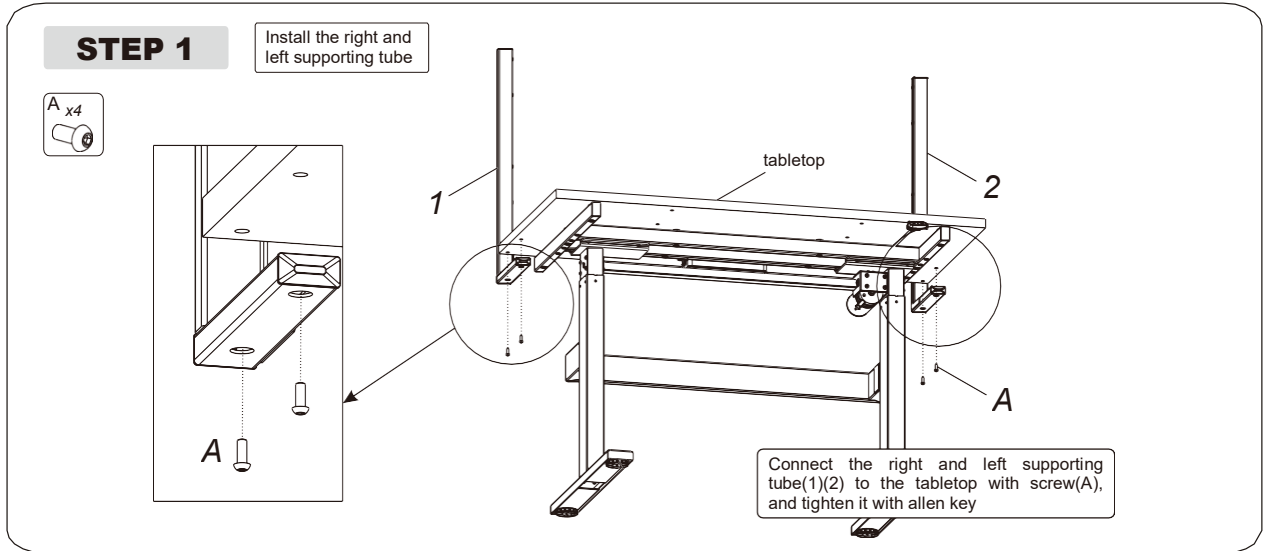
## Step 6: Installing the Hand Switch and Connecting to the Controller



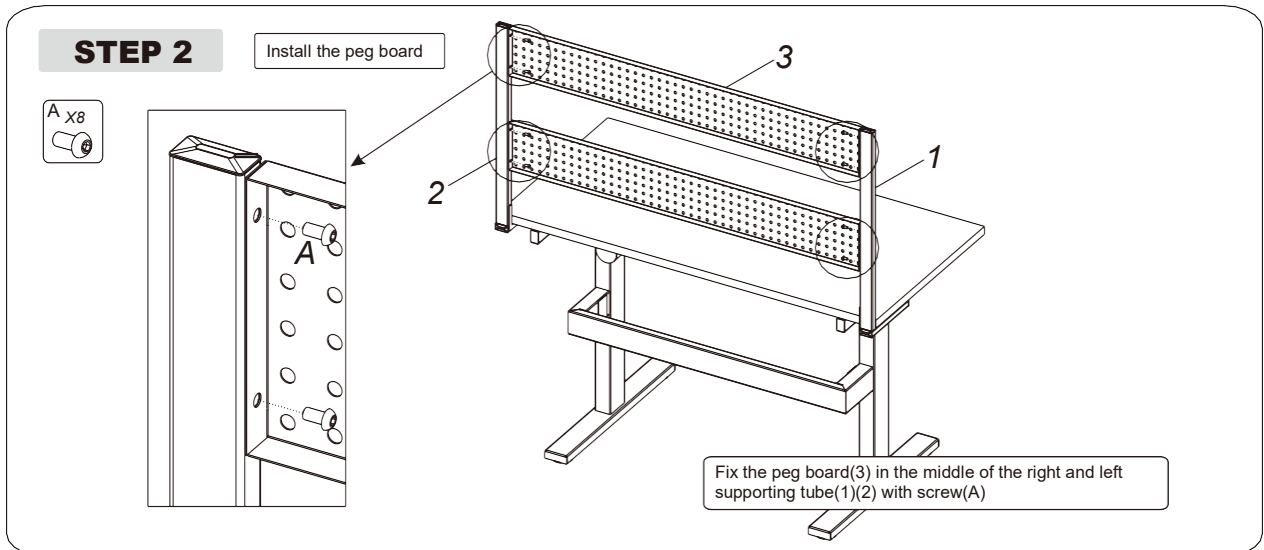


## Installing the Backboard

### Step 1: Installing the Support Tubes

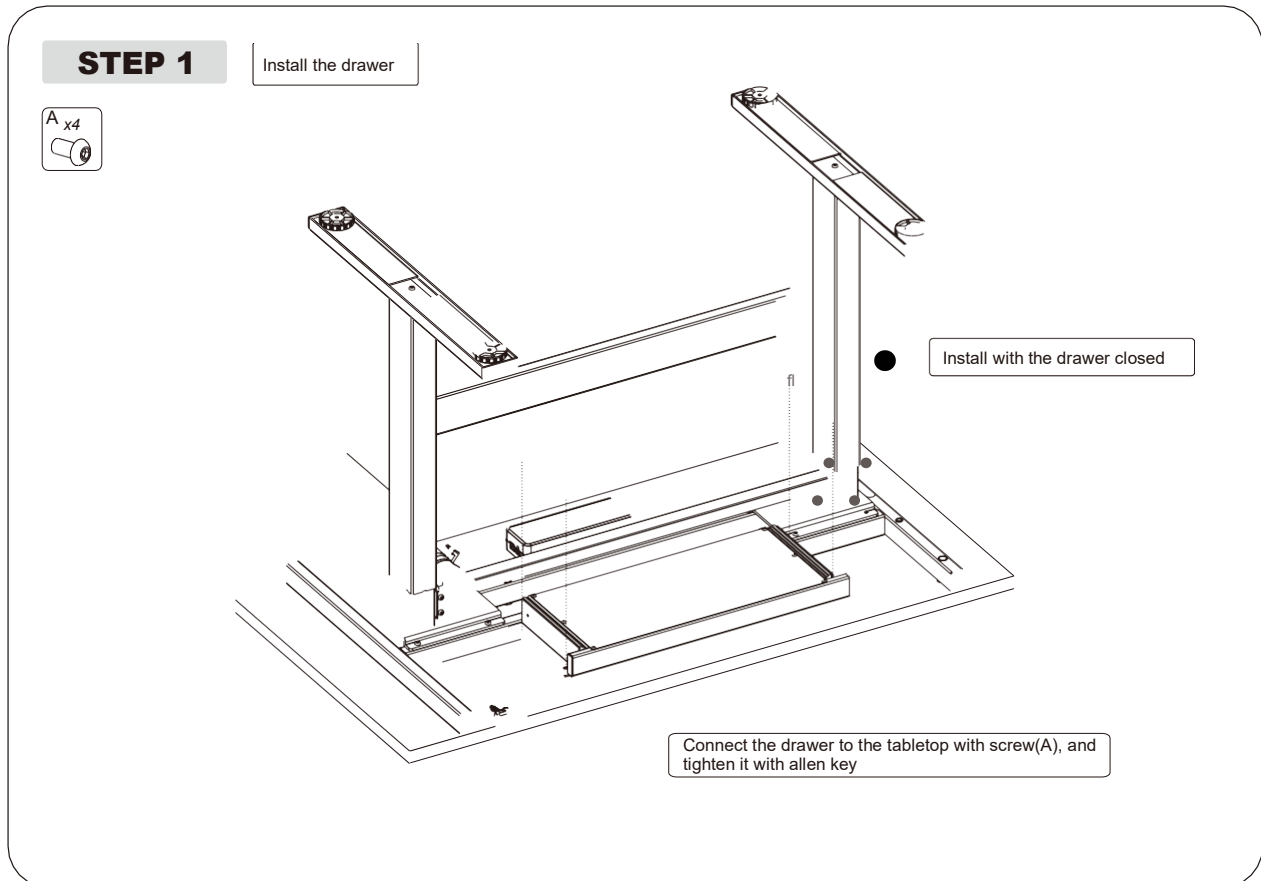


### Step 2: Installing the Peg Board



## Installing the Storage Drawer

### Step 1: Installing the Storage Drawer



### Troubleshooting:

- Bench does not adjust down when pressing and holding the down direction arrow.
  - Check if all the cables are connected
- Bench does not adjust up when pressing and holding the up direction arrow.
  - Check if the load is too heavy - should not exceed 500 lbs.
- If the above processes do not work, please contact customer service at 877-397-5144.
- To reset:
  - Unplug the desk and wait at least 30 seconds before reconnecting power. Once power is reconnected press and hold the DOWN arrow until desktop hits lowest height and rebounds to stop. Reset is now complete.

**This page left intentionally blank**

# Furniture Warranty

## 2-Year Limited Warranty Program

For a period of two (2) years after purchase, XLS Products, Inc. ("Manufacturer ") will either repair or replace defective components in accordance with this Limited Warranty . This warranty is between Manufacturer and the original purchaser and is valid only when accompanied by the original purchaser's sales receipt showing original date of purchase and location of purchase. Replacements under this warranty revert back to the date of original purchase for future warranty .

Manufacturer or its authorized dealer can accept or reject warranty claims based on its findings. This warranty applies in normal office use only and is not intended for industrial or public use. Manufacturer can make substitutions as required of materials, components, and sub-components of comparable value and utility . This warranty is limited to product repair or replacement (to be determined solely by Manufacturer). Warranty replacement is limited to only the single affected component.

This warranty covers only manufacturing defects and does not cover normal wear and tear, abuse or misuse, exposure to extreme heat or cold, abrasion or excessive weight. This product is intended to be used in standard installations only. This warranty is invalid if the product is not used for intended purpose. Manufacturer disclaims liability for any aspect of installation and any inconvenience caused by a defective part of a component .

Certain items are not covered by this warranty. These include, but are not limited to the following:

1. Components subjected to abuse, including abuse intended to simulate failure.
2. Damages caused by retailer, shipper or installation crew (such as scratches, dents, tears, chips, etc.).
3. Any part which merely exhibits normal wear yet functions essentially as new, including chips, scratches or stretching of materials and stitching.
4. Tears, punctures, scratches or any damage caused by improper installation or use.
5. Damage to frames/welds resulting from improper assembly is not covered . General frame rusting is not covered .
6. Fading and/or discoloration of fabrics resulting from exposure to the elements, chemicals, oils, fluids or any other cause are not covered .

To make a claim, call the toll-free number below. Please have available a copy of the original sales receipt along with a brief description of the problem. Please also provide your email address and daytime telephone or cell phone #. All items may be charged actual freight costs plus \$15 for handling . Repairs or replacement will be made at the Manufacturer's option. ***Sales and use taxes, plus shipping and handling charges are the responsibility of the consumer.***

THIS IS THE ENTIRE EXCLUSIVE EXPRESS LIMITED LIABILITY. THE MANUFACTURER NEITHER MAKES NOR IS RESPONSIBLE FOR ANY OTHER WARRANTIES, EITHER EXPRESS OR IMPLIED, INCLUDING THOSE OF RETAILING DEALERS. THIS EXCLUSIVE REMEDY IS LIMITED TO RECEIPT OF A CREDIT IN CONNECTION WITH THE REPAIR OR REPLACEMENT OF ANY PRODUCT OR COMPONENT DEEMED TO BE DEFECTIVE UNDER THE TERMS AND CONDITIONS AS STATED IN THIS WARRANTY. NEITHER XLS PRODUCTS, INC., THE PRODUCT MANUFACTURER NOR ITS AGENTS SHALL BE LIABLE IN ANY CASE FOR INCIDENTAL, INDIRECT, SPECIAL OR CONSEQUENTIAL DAMAGES RESULTING FROM THE USE OF THIS PRODUCT OR ARISING OUT OF ANY BREACH OF THIS WARRANTY OR NEGLIGENCE EVEN IF IT HAS **BEEN** ADVISED OF THE POSSIBILITY OF SUCH DAMAGES. EXCEPT AS OTHERWISE MAY BE REQUIRED BY LAW, THERE ARE NO OTHER EXPRESS OR IMPLIED WARRANTIES OTHER THAN THE WARRANTY DESCRIBED HEREIN, AND ALL OTHER WARRANTIES, INCLUDING ANY IMPLIED WARRANTY OF MERCHANTABILITY OR FITNESS FOR A PARTICULAR PURPOSE ARE EXPRESSLY DISCLAIMED.

**Contact Warranty Services at:      [ContactUs@Hanover-Products.com](mailto:ContactUs@Hanover-Products.com)  
1-877-397-5144**