

# FRIGIDAIRE

## GALLERY

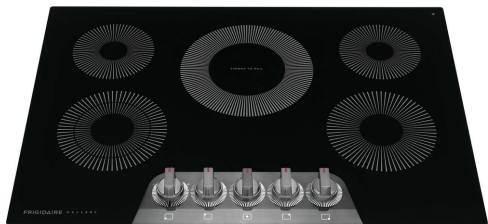
GCCE3070AD

30" Electric Cooktop

The Frigidaire Gallery 30" Electric Cooktop provides delicious results every time with the EvenTemp™ Element that delivers consistent heat across the element's surface, reducing hot and cold spots in your pan. Enjoy ultimate cooking flexibility with powerful elements designed to meet all of your cooking needs, including a Dual Expandable Element and Keep Warm Zone. Plus, these cooktops feature bright, backlit LED knobs that light up when the cooktop is in use, conveniently placed on the front of the cooktop.

Available Colors: Stainless Steel, Black Stainless Steel

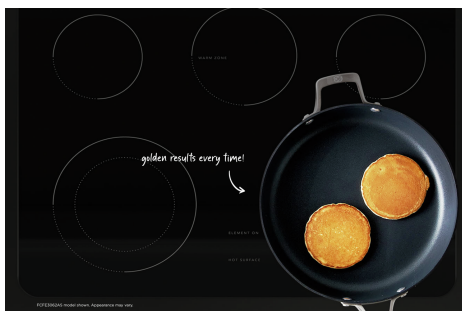
Version: 12/22



### Consumer Benefits

#### Consistent Results with the Even Temp™ element

With our EvenTemp™ cooktop technology, heat is evenly distributed across the element's surface, which reduces hot spots and cold areas in your pan.



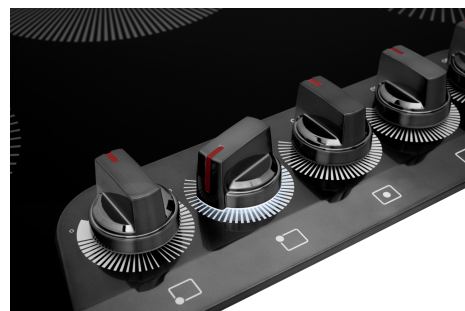
#### Flexible Five Element Cooktop

With five elements, this cooktop is designed to handle all of your cooking needs, including our powerful 3,200 Watt EvenTemp™ Element, a Dual Expandable Element, and convenient Keep Warm Zone.



#### Backlit LED Knobs

Backlit LED knobs light up when your element is in use.



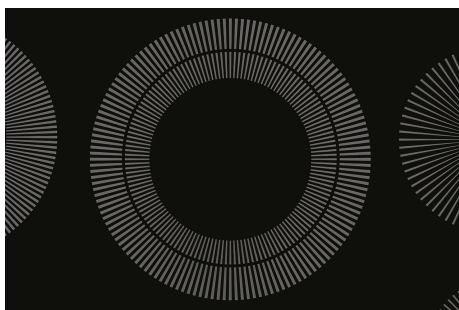
#### Peace of Mind with the Frigidaire® Fit Promise

We promise that your new 30" Frigidaire radiant cooktop will fit your existing countertop cutout of the same width and configuration, or we will reimburse you for cabinet modification costs up to \$100.

Via mail-in rebate. See <https://www.Frigidaire.com/FitPromise> for additional information.

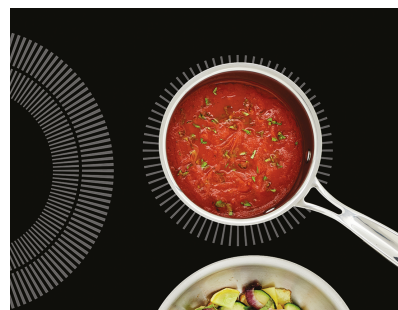
#### SpaceWise® Dual Expandable Element

Our convenient 2-in-1 element expands from 5" for smaller pots to 7" for larger cookware, providing more cooktop flexibility.



#### Cooktop Keep Warm Zone

Keep food warm until everything - and everyone - is ready.



FRIGIDAIRE  
FIT PROMISE

## Product Photography



## Product Specifications

### Product Information

|                     |                  |
|---------------------|------------------|
| Product Line        | Electric Cooktop |
| Power Type          | Electric 240v    |
| Connected Appliance | No               |
| UPC                 | 012505566509     |

### Cooktop Performance

|  |             |
|--|-------------|
| Right Front Element Burner Size        | 7"          |
| Right Rear Element Burner Size         | 6"          |
| Left Front Element Burner Size (Small) | 5"          |
| Left Front Element Burner Size (Large) | 7"          |
| Left Rear Element Burner Size          | 6"          |
| Center Rear Element Burner Size        | 9"          |
| Right Front Element Burner             | 1,800 Watts |
| Right Rear Element Burner              | 1,200 Watts |
| Left Front Element Burner (Small)      | 750 Watts   |
| Left Front Element Burner (Large)      | 1,800 Watts |
| Left Rear Element Burner               | 1,200 Watts |
| Center Rear Element Burner             | 3,200 Watts |

### Display

|                  |            |
|------------------|------------|
| Control Location | Front      |
| Display Type     | Mechanical |

### Electrical Specifications

|                          |           |
|--------------------------|-----------|
| Amps @ 240 Volts         | 38.3 Amps |
| Connected Load @ 240V    | 9.2 kW    |
| Minimum Circuit Required | 40 Amps   |
| Voltage Rating           | 240 V     |

### General Specifications

|                        |        |
|------------------------|--------|
| Frigidaire Fit Promise | Yes    |
| Product Weight         | 31 lbs |
| Prop 65 Label          | Yes    |
| Warranty - Labor       | 1 Year |
| Warranty - Parts       | 1 Year |

### Safety Certifications and Approvals

|            |     |
|------------|-----|
| CSA Listed | Yes |
| UL Listed  | Yes |

### Cooktop

|                             |        |
|-----------------------------|--------|
| Cooking Surface Type        | Smooth |
| Hot-Surface Indicator Light | Yes    |

### Controls

|              |    |
|--------------|----|
| Sabbath Mode | No |
|--------------|----|

### Dimensions and Volume

|                      |         |
|----------------------|---------|
| Height               | 2 5/8"  |
| Width                | 30 5/8" |
| Depth                | 21 3/8" |
| Cutout Height        | 5"      |
| Minimum Cutout Width | 28 1/2" |
| Minimum Cutout Depth | 19 5/8" |
| Maximum Cutout Width | 29 7/8" |
| Maximum Cutout Depth | 20 1/2" |

### Installation

|                                  |              |
|----------------------------------|--------------|
| Installed Over a Wall Oven       | Yes          |
| Power Supply Connection Location | Right Center |

### Certifications and Approvals

|               |     |
|---------------|-----|
| ADA Compliant | Yes |
|---------------|-----|

# Consumables, Accessories and Installation Parts

## Consumables

10FFMICF01  
ReadyClean™  
Microfiber Cleaning  
Cloths



10FFSCRB01  
ReadyClean™  
Scrubbing Pads



5304508690  
ReadyClean™ Glass and  
Ceramic Cooktop  
Cleaner



10FFCTCL02  
ReadyClean™ Glass and  
Ceramic Cooktop  
Cleaner - 2 Pack



10FFCTKT01  
ReadyClean™ Cooktop  
Cleaning Kit

