

ULTRAWIDE PROJECTION SCREENS

DA-LITE PRODUCT PORTFOLIO



STRENGTHEN CONFERENCING PRODUCTIVITY, ENGAGEMENT AND INCLUSIVITY

21:9 Ultrawide Format is quickly becoming the standard for displaying hybrid video conferencing solutions, where all attendees, whether they are in person or virtual, are equitably seen and heard.

Get familiar with 21:9

APPLICATIONS



Conference Rooms



Boardrooms



Small Classrooms

21:9 ULTRAWIDE FORMAT PRODUCTS

Da-Lite offers a complete line of electric and fixed frame screens in 21:9 Ultrawide Format standard part numbers.



ELECTRIC SCREENS

Tensioned Advantage with SightLine

The Tensioned Advantage® ceiling recessed electric screen series is designed with ceiling trim in place, concealing the rough opening and eliminating the need to complete additional trim work once the screen is installed. Its two-stage installation option allows the screen case to be installed during the rough-in construction stage, and the screen surface assembly during the finishing stage. Sliding installation brackets allow mounting flexibility for easy attachment of the screen housing to the structure above the drop ceiling.

Da-Lite's new cable drop feature, SightLine™, available with the Tensioned Advantage electric screen, gives the impression of a floating screen. Its single roller design features 3 or 4 thin cables eliminating the need for black drop – the black border above the projection screen. While the market is accustomed to specifying drop distance upon ordering, now vertical placement of the screen can be variable as the cables accommodate a range of drop distances up to 70"/180 cm between the ceiling and the top of the screen – making ordering a snap. What's more, this feature creates usable space above the viewing area to preserve architectural interests and provides the opportunity for camera/speaker placement.



Surface	Parallax Stratos 1.0	HD Progressive 0.6	HD Progressive 0.9	HD Progressive 1.1	HD Progressive 1.1 Perf	HD Progressive 1.1 Contrast	HD Progressive 1.3	Da-Mat
104" Diagonal	DL15667LS	DL15668LS	DL15669LS	DL15670LS	DL15671LS	DL15672LS	DL15673LS	DL15674LS
130" Diagonal	DL15675L	DL15676L	DL15677L	DL15678L	DL15679L	DL15680L	DL15681L	DL15682L
156" Diagonal	DL15683L	DL15684L	DL15685L	DL15686L	DL15687L	DL15688L	DL15689L	DL15690L
167" Diagonal	DL15691L	DL15692L	DL15693L	DL15694L	DL15695L	DL15696L	DL15697L	DL15698L

ELECTRIC SCREENS

Tensioned Contour

The Tensioned Contour® Electrol® is the latest ceiling or wall-mounted electric screen offering simple installation. A variety of finishes make this a seamless addition to any room.



Surface	Parallax Pure 0.8	Parallax Stratos 1.0	HD Progressive 0.6	HD Progressive 0.9	HD Progressive 1.1	HD Progressive 1.1 Perf	HD Progressive 1.1 Contrast	HD Progressive 1.3	HD Progressive ReView 0.9	Da-Mat
104" Diagonal	DL15699LS	DL15700LS	DL15701LS	DL15702LS	DL15703LS	DL15704LS	DL15705LS	DL15706LS	DL15707LS	DL15708LS
130" Diagonal	DL15709LS	DL15710LS	DL15711LS	DL15712LS	DL15713LS	DL15714LS	DL15715LS	DL15716LS	DL15717LS	DL15718LS
156" Diagonal	–	DL15719L	DL15720L	DL15721L	DL15722L	DL15723L	DL15724L	DL15725L	DL15726L	DL15727L
174" Diagonal	–	DL15728L	DL15729L	DL15730L	DL15731L	DL15732L	DL15733L	DL15734L	DL15735L	DL15736L

FIXED FRAME SCREENS

Cinema Contour

The Cinema Contour® features a wider, substantial frame as well as the latest technology in projection surfaces designed for 4K and Ultra HD to maximize the technology of your projector. The larger standard black frame gives the eye a point of reference and enhances contrast for film purists and aficionados. The Cinema Contour can be customized by frame, finish, size and surface.

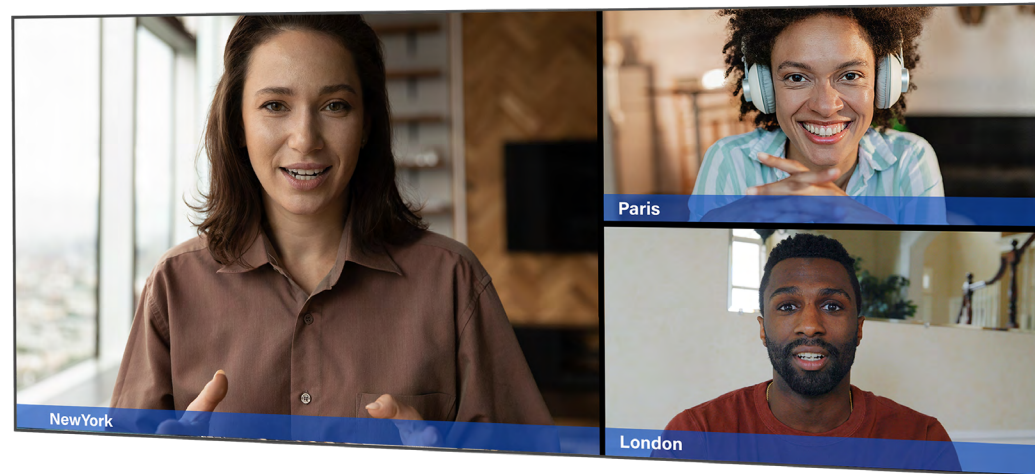


Surface	Parallax Stratos 1.0	HD Progressive 0.6	HD Progressive 0.9	HD Progressive 1.1	HD Progressive 1.1 Perf	HD Progressive 1.1 Contrast	HD Progressive 1.3	HD Progressive ReView 0.9	Da-Mat
104" Diagonal	DL15767V	DL15768V	DL15769V	DL15770V	DL15771V	DL15772V	DL15773V	DL15774V	DL15775V
130" Diagonal	DL15776V	DL15777V	DL15778V	DL15779V	DL15780V	DL15781V	DL15782V	DL15783V	DL15784V
156" Diagonal	DL15785V	DL15786V	DL15787V	DL15788V	DL15789V	DL15790V	DL15791V	DL15792V	DL15793V
182" Diagonal	DL15794V	DL15795V	DL15796V	DL15797V	DL15814V	DL15798V	DL15799V	DL15800V	DL15801V
208" Diagonal	DL15802V	DL15803V	DL15804V	DL15805V	DL15815V	DL15806V	DL15807V	DL15808V	DL15809V

FIXED FRAME SCREENS

UTB Contour

The UTB Contour® has an ultra-thin bezel frame and low profile. Designed to look like a large flat panel, the UTB Contour can more than double the size of the largest flat panel televisions available.

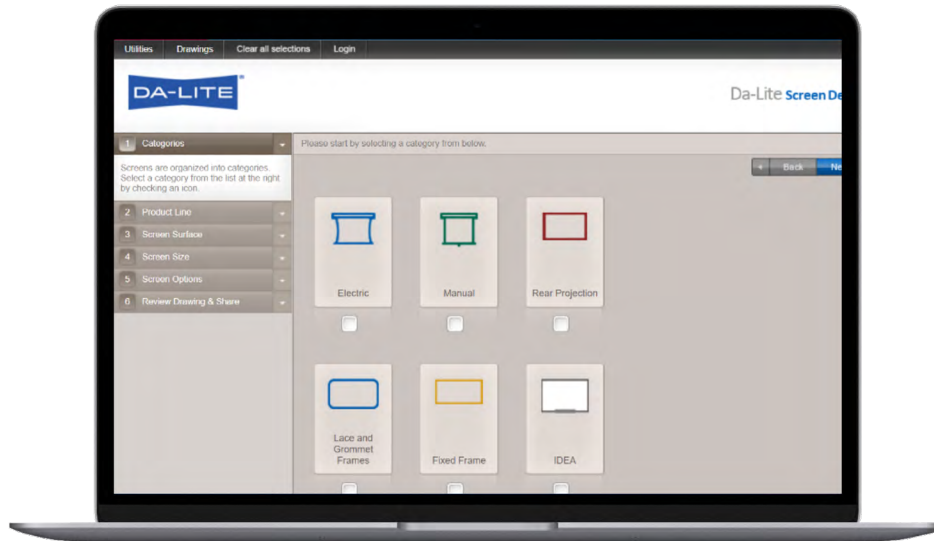


Surface	HD Progressive 0.6	HD Progressive 0.9	HD Progressive 1.1	HD Progressive 1.1 Contrast	HD Progressive 1.3	Da-Mat
104" Diagonal	DL15737	DL15738	DL15739	DL15740	DL15741	DL15742
130" Diagonal	DL15743	DL15744	DL15745	DL15746	DL15747	DL15748
156" Diagonal	DL15749	DL15750	DL15751	DL15752	DL15753	DL15754
182" Diagonal	DL15755	DL15756	DL15757	DL15758	DL15759	DL15760
208" Diagonal	DL15761	DL15762	DL15763	DL15764	DL15765	DL15766

DON'T SEE YOUR FAVORITE PRODUCT LISTED?

Screen Designer

The Screen Designer online tool can be used to customize any Da-Lite projection screens to 21:9 Ultrawide Format or any custom wide size. Once your drawing is complete, easily share your design directly from Screen Designer.



LEGRAND | AV COMMERCIAL BRANDS
C2G | Chief | Da-Lite | Luxul | Middle Atlantic | Vaddio | Wiremold

FOR YOUR IMAGE | legrandav.com

USA 866.977.3901 av.da-lite.support@legrand.com CANADA 877.345.4329 av.da-lite.support@legrand.com

EMEA +31 495 580 840 av.emea.sales@legrand.com APAC +852 2145 4099 av.asia.sales@legrand.com

©2022 Legrand AV Inc. 220426 Rev A 7/22 Da-Lite is a registered trademark of Legrand AV Inc. All other brand names or marks are used for identification purposes and are trademarks of their respective owners. All patents are protected under existing designations. Other patents pending.