

INSTRUCTION BOOK FOR
Fast-Fold® Truss Frame



Instructions

1. Unfold the 4 sections of truss frame, lock all latches and lay face up on the floor.
2. Attach top and bottom sections to side sections using speedy cranks. Observe color tapes so they match.
3. Unfold truss feet located in top and bottom truss sections to raise frame off the floor.

NOTE 1: Frames have rivnuts at the hinge points on the top and bottom sections. Insert a speedy crank through the unthreaded rivnut and tighten into the threaded rivnut. This will lock hinge joint securely.

NOTE 2: On screens 25' and over, another section of 6" truss is provided. This section will mount on the top of the TOP frame section and will appear to make an inverted "L". "L" section extends toward back of screen. Fasten top "L" section to TOP truss with speedy cranks. Observe color tapes so they match. Flat steel diagonal braces are provided. These are attached between the "L" section and the TOP truss frame section. Tighten all speedy cranks securely.

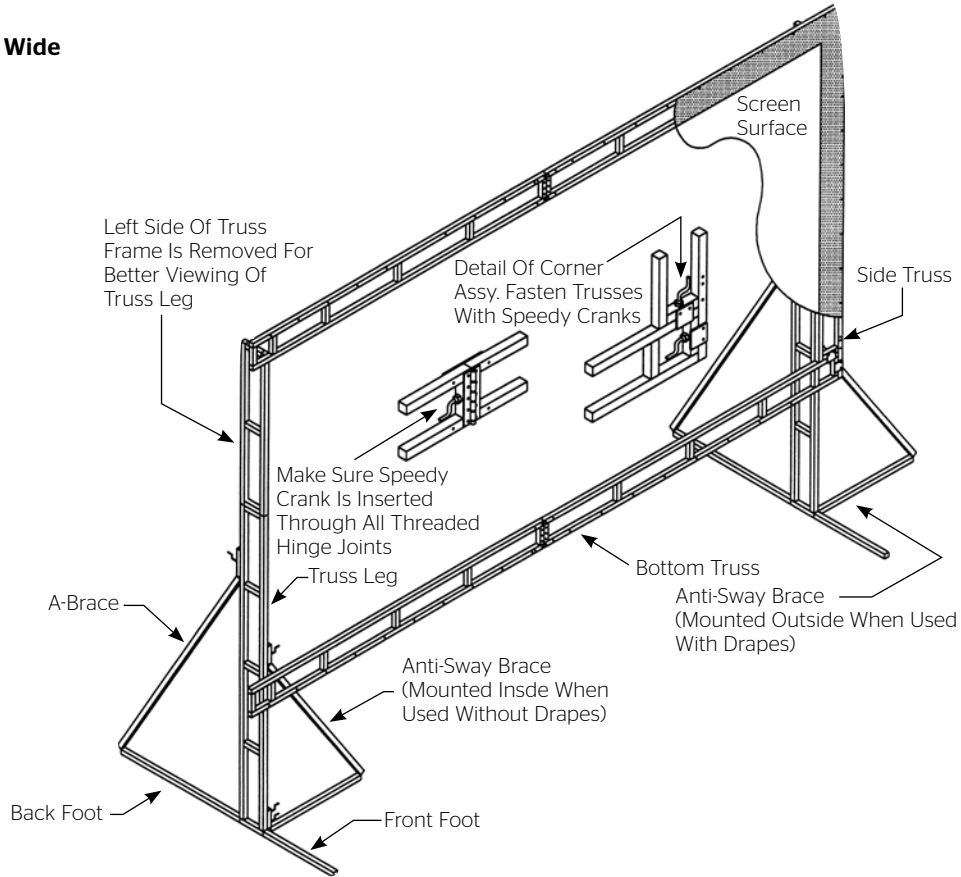
Attach back braces to the BOTTOM section of the truss frame section with speedy cranks. Observe color tapes so they match. Tighten all speedy cranks securely.

4. Attach truss legs to side frame members at desired height, using speedy cranks. Note color tape on legs and frame. When matched, the screen height will be 44" off the floor. If legs are too high, top section or sections may be folded over. Do not tighten speedy cranks until all are started, then tighten.

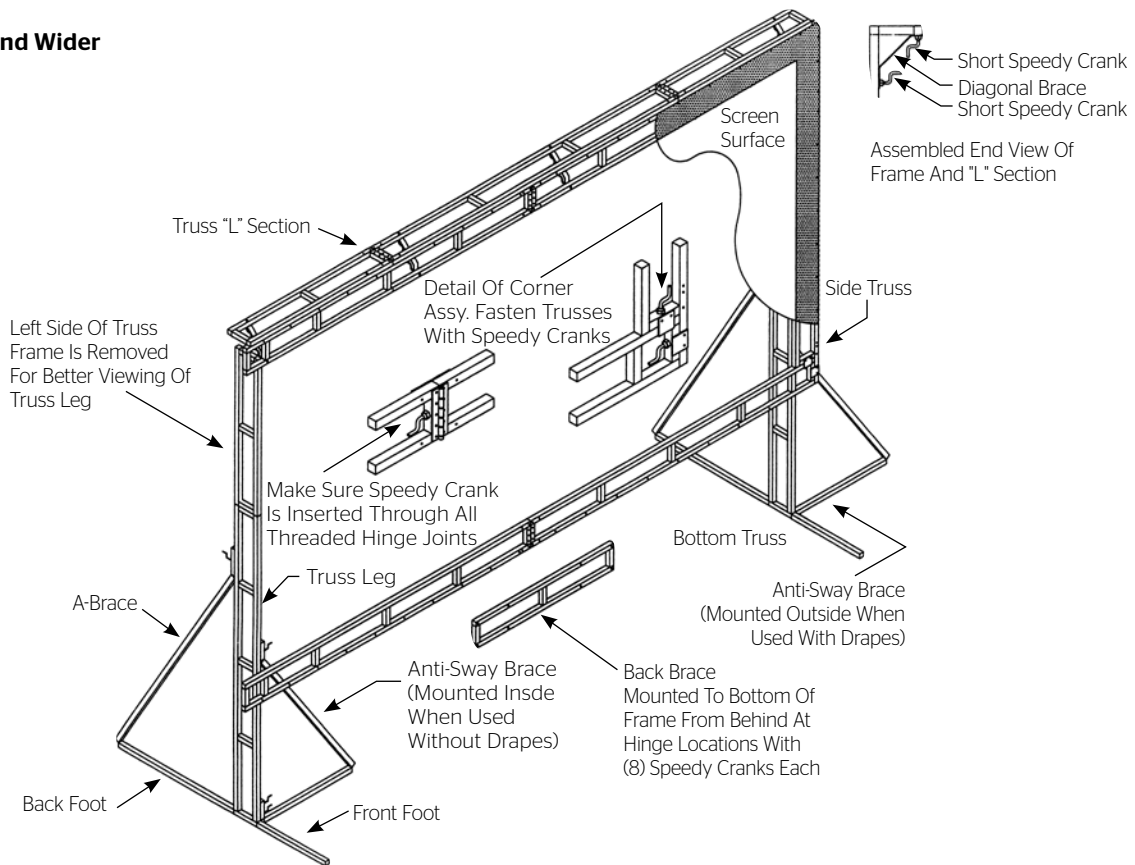
5. Lay the frame on the floor.
6. Match top of screen surface (labeled TOP) with top of frame.
7. Snap all four corners.
8. Starting at the bottom section, snap the center button. Continue snapping the remaining buttons.
9. Attach Leg to each side of frame using at least 2 Speedy Cranks per leg. NOTE: Speedy Crank at bottom of leg should be on side of leg away from screen. Do not tighten Speedy Cranks until all are started.
10. Height Adjustment. Fast-Fold® Truss screen height is adjustable in 6" increments either up or down. Normal screen height is 44" from bottom of frame to floor and is the standard height for use with presentation drapery accessories.
NOTE: Do not extend frame so that more than half of the frame height is above the top of the legs.
11. Raise front foot of each leg and lock corner brace.
12. With one person at each leg, raise to standing position.
NOTE: With very large screens, more than 2 people may be required.
13. Lower back foot, lock corner brace and attach "A" brace from rear foot to back member of truss leg.
14. Attach anti-sway braces to legs.
15. To pack, reverse procedure. Use caution to prevent surface damage.

Fast-Fold® Truss Frame Construction

Under 25' Wide



25' And Wider



LIMITED ONE YEAR WARRANTY ON DA-LITE PRESENTATION PRODUCTS

Milestone AV Technologies LLC warrants certain Da-Lite branded products to the original purchaser only, to be free from defects in materials and workmanship for a period of one (1) year from the date of purchase by the original purchaser; provided they are properly operated according to Da-Lite's instructions and are not damaged due to improper handling or treatment after shipment from the factory.

This warranty does not apply to equipment showing evidence of misuse, abuse or accidental damage, or which has been tampered with or repaired by a person other than authorized Da-Lite personnel.

Da-Lite's sole obligation under this warranty shall be to repair or to replace (at Da-Lite's option) the defective part of the merchandise. Returns for service should be made to your Da-Lite dealer. If it is necessary for the dealer to return the screen or part to Da-Lite, transportation expenses to and from Da-Lite are payable by the purchaser and Da-Lite is not responsible for damage in shipment. To protect yourself against damage or loss in transit, insure the product and prepay all transportation expenses.

TO THE MAXIMUM EXTENT PERMITTED BY APPLICABLE LAW, THIS WARRANTY IS IN LIEU OF ALL OTHER WARRANTIES, EXPRESS OR IMPLIED, INCLUDING WARRANTIES AS TO FITNESS FOR USE AND MERCHANTABILITY. Any implied warranties of fitness for use, or merchantability, that may be mandated by statute or rule of law are limited to the one (1) year warranty period. This warranty gives you specific legal rights, and you may also have other rights, which vary from state-to-state. **TO THE MAXIMUM EXTENT PERMITTED BY APPLICABLE LAW, NO LIABILITY IS ASSUMED FOR EXPENSES OR DAMAGES RESULTING FROM INTERRUPTION IN OPERATION OF EQUIPMENT, OR FOR INCIDENTAL, DIRECT, OR CONSEQUENTIAL DAMAGES OF ANY NATURE.**

In the event that there is a defect in materials or workmanship of a Da-Lite product, you may contact our Sales Partners at PO Box 137, Warsaw, IN 46581-0137, (574) 267-8101, (800) 622-3737.

IMPORTANT: THIS WARRANTY SHALL NOT BE VALID AND DA-LITE BRANDED PRODUCTS SHALL NOT BE BOUND BY THIS WARRANTY IF THE PRODUCT IS NOT OPERATED IN ACCORDANCE WITH THE DA-LITE WRITTEN INSTRUCTIONS.

Keep your sales receipt to prove the date of purchase and your original ownership.



A Milestone AV Technologies Brand

3100 North Detroit Street
Warsaw, Indiana 46582
P: 574.267.8101 or 800.622.3737
F: 574.267.7804 or 877.325.4832
E: info@da-lite.com
www.da-lite.com

DL-0257 01.14

© 2013 Milestone AV Technologies LLC. Printed in U.S.A.

47404