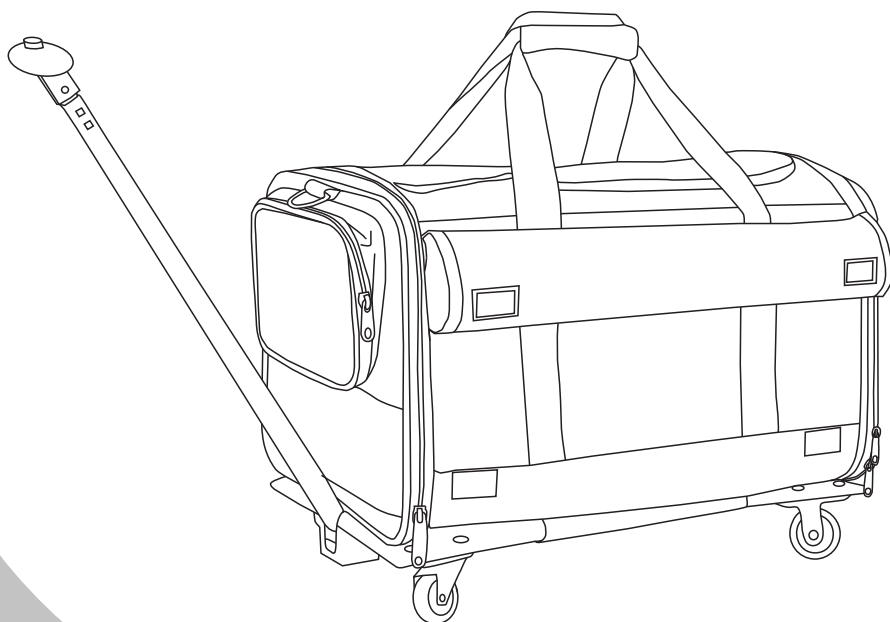


PET CARRIER

Installation instructions

For Pets Only



This is not a toy. Under no circumstances should this pet item be used by or for children.
Esto no es un juguete. Bajo ninguna circunstancia este artículo debe ser utilizado por o para niños.

Components:



- 1.Rolling plate
- 2.Pet carrier
- 3.Shoulder strap

Assembly:



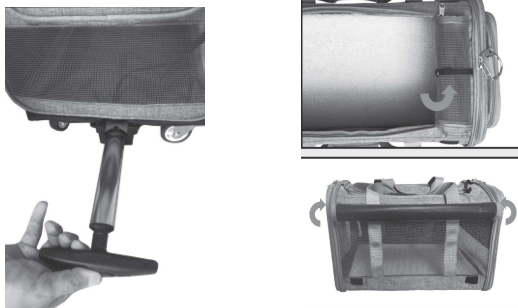
1. Unzip the bag and pull the zipper on the front door open.



2. Attach the pet bag onto the rolling plate by connecting it with hook and loops.

3. Press and hold the button at the top of the pull rod to expand the handle, adjust it to the appropriate height.

4. After the top skylight is opened, it can be rolled up and fastened into place. The sides can also be rolled up to stick to the top. See example on the right.



WARNING

- This is not a toy. Under no circumstances should this pet carrier be used by or for children.
- Not intended to be used as a restraining device for aggressive animals.
- Do not leave your pet unattended while in the carrier.
- Do not use near an open or exposed flame.
- Do not leave pet unsupervised in the carrier
- This carrier is designed for one pet only. Do not place more than one pet in the carrier.
- Do not exceed the maximum weight of 22 lbs.
- Failure to follow these warnings and the instructions could result in serious injury or death.