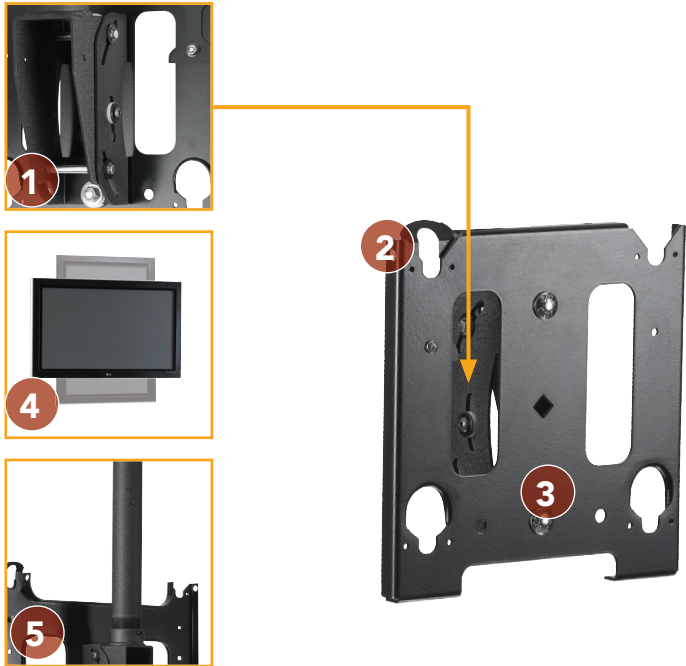




# CEILING MOUNTS MCS™ □ 30 - 55" SINGLE CEILING MOUNT



## FEATURES

- 1 CENTRIS® FINGERTIP TILT**  
Effortlessly adjust display using Centris fingertip tilt technology. Screen angle stays set until you decide to readjust.
- 2 Q-LATCH® MOUNTING SYSTEM**  
Flat panel secures to mount with a latching flag. Easy to connect/disconnect – no tools needed!
- 3 POST-INSTALLATION LEVELING**  
No tools needed. Ultra fast and easy screen positioning with lock down capability.
- 4 PORTRAIT/LANDSCAPE CAPABILITY**  
Mounts in either portrait or landscape position.
- 5 CABLE MANAGEMENT**  
Easily route cables through 1-1/2" NPT extension column.

## WHAT YOU NEED TO KNOW

**ORDERING OPTIONS**  
Available in custom or universal.

**OTHER PRODUCT OPTIONS**




**MCD™**  
30 - 50" Dual Ceiling Mount

## SPECIFICATIONS

Roll	±2°
Tilt	-20°, +5°
Yaw	360°
Color	Black
Weight Capacity	125 lbs (56.7 kg)



## RECOMMENDED ACCESSORIES

-  **CMA STRUCTURAL ADAPTERS**
-  **CMS EXTENSION COLUMNS**
-  **MAC251** ■ Universal Storage Accessory

For a complete list of flat panel mount accessories see page 83.

## TECHNICAL DRAWINGS

