

TABLET STANDS FOR HEALTH PROTOCOL SOLUTIONS

Floor and Tabletop Tablet Stands

Chief floor and tabletop tablet stands support safe entry and navigation through public spaces. By offering aesthetic, value-driven, easy to install mounting solutions, Chief is simplifying the overwhelming complexity of health protocol solutions in the marketplace. When paired with a temperature-screening device, these mounts serve as a complete solution in providing peace of mind for individuals as they enter a business, workplace, school or any public space. Fostering confidence and safety, Chief tablet stands help secure access for everyone's return to spaces where we live, work and play.



The Tablet Tabletop Stand (HTSTS) supports temperature-sensing, column-mounted tablets up to 10 lbs.

- Support temperature-sensing, column-mounted tablets up to 10 lbs.
- VESA-compatible models support tablets up to 15 lbs. with 75x75mm or 100x100mm bolt patterns.
- Built-in cable management, storage & complimentary device management for installation flexibility and enhanced aesthetics.
- Displays can be tilted to adjust to a range of user heights.
- Lightweight designs with superior stability make moving displays or installing new screening locations simple.
- Stands can be bolted down to surfaces for additional stability and security (optional).

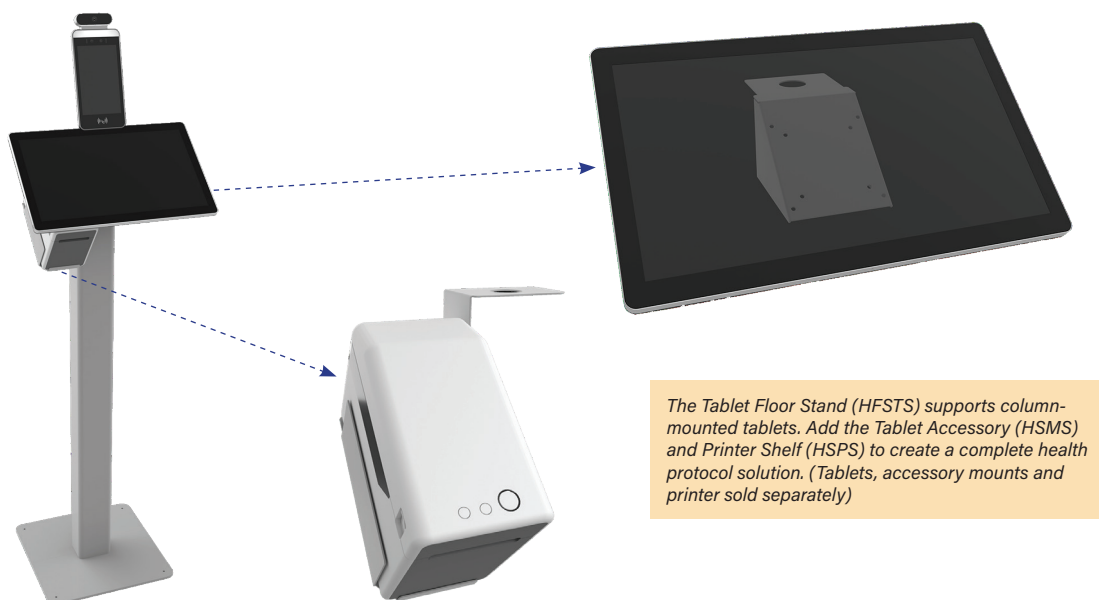


The VESA-compatible Tablet Floor Stand (HFSVS) supports tablets up to 15 lbs. with 75x75mm or 100x100mm bolt patterns.

Accessories

Accessories are available to assist with management of occupancy data at screening locations and instill user confidence in installations.

- Printer Shelf accessory allows for convenient printing of confirmations, badges, stickers and more (compatible with Brother® TD2020 printer)
- Tablet Mount accessory supports additional digital signage to display important reminders, messages and surveys that keep communities safe
- Accessories are compatible with Tablet Floor Stand models, sold separately



The Tablet Floor Stand (HFSTS) supports column-mounted tablets. Add the Tablet Accessory (HSMS) and Printer Shelf (HSPS) to create a complete health protocol solution. (Tablets, accessory mounts and printer sold separately)

Part Number	Product Name	Center of Display to Floor/Table	Overall Product Dimensions (w x d x h)	Weight Capacity	Mounting Pattern Range
HFSVS	Tablet Floor Stand, VESA	49.5" (126 cm)	15" x 15" x 52"	15 lbs. (7 kg)	75 x 75mm or 100 x 100mm
HFSTS	Tablet Floor Stand, Column Mounted	55" (141 cm)	15" x 15" x 48"	10 lbs. (5 kg)	1.5" threaded column
HSPS	Tablet Floor Stand, Printer Shelf	NA	8.8" x 6.7" x 10.6"	3 lbs. (1.3 kg)	Custom
HSMS	Tablet Floor Stand, Tablet Mount	46.2" (117 cm)	4.5" x 8.2" x 3.8"	5 lbs. (2.3 kg)	75 x 75mm or 100 x 100mm
HTSVS	Tablet Tabletop Stand, VESA	9.2" (23 cm)	8.9" x 7.8" x 11.6"	15 lbs. (7 kg)	75 x 75mm or 100 x 100mm
HTSTS	Tablet Tabletop Stand, Column Mounted	15" (38 cm)	8.9" x 7.8" x 8"	10 lbs. (5 kg)	1.5" threaded column



INSTALLER INSPIRED | legrandav.com

USA 866.977.3901 av.chief.support@legrand.com
 CANADA 877.345.4329 av.chief.canada@legrand.com
 EMEA +31 495 580 840 av.emea.sales@legrand.com
 APAC +852 2145 4099 av.asia.sales@legrand.com

©2020 Legrand AV Inc. 200736 Rev 1 10/20 Chief is a registered trademark of Legrand AV Inc. All other brand names or marks are used for identification purposes and are trademarks of their respective owners. All patents are protected under existing designations. Other patents pending.

A brand of **legrand**

COMMERCIAL AV BRANDS

C2G | Chief | Da-Lite | Luxul | Middle Atlantic | Vaddio | Wiremold