

---

# INSTALLATION INSTRUCTIONS

---

## I-Beam Clamp Accessory

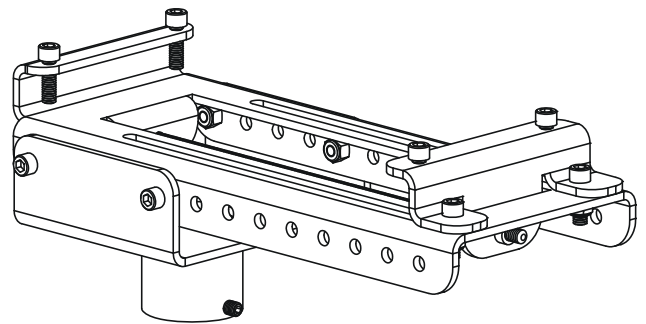
Model: CMA-360 

Specifications:

- Attaches a 1-1/2" NPT threaded column to an I-Beam truss from 2-5/16" to 12" (59 to 305 mm) wide.
- Intended for use with Chief CMA Series accessories and RPA Series mounts.

**NOTE:** U.L. listed assemblies require the use of U.L. listed components.

- Weight capacity of 250 lbs (113 kg).



### BEFORE YOU BEGIN

---



**WARNING:** It is the installer's responsibility to make sure all components are properly assembled and installed using the instructions provided. Failure to read, thoroughly understand, and follow all instructions can result in serious personal injury, damage to equipment, or voiding of factory warranty.

- If you have any questions about these instructions or your specific installation, contact Chief Manufacturing at 1-800-582-6480 or 952-894-6280.



## IMPORTANT WARNINGS AND CAUTIONS!

**WARNING:** A WARNING alerts you to the possibility of serious injury or death if you do not follow the instructions.

**CAUTION:** A CAUTION alerts you to the possibility of damage or destruction of equipment if you do not follow the corresponding instructions.



**WARNING:** Failure to provide adequate structural strength for this component can result in serious personal injury or damage to equipment! It is the installer's responsibility to make sure the structure to which this component is attached can support five times the combined weight of all equipment. Reinforce the structure as required before installing the component.

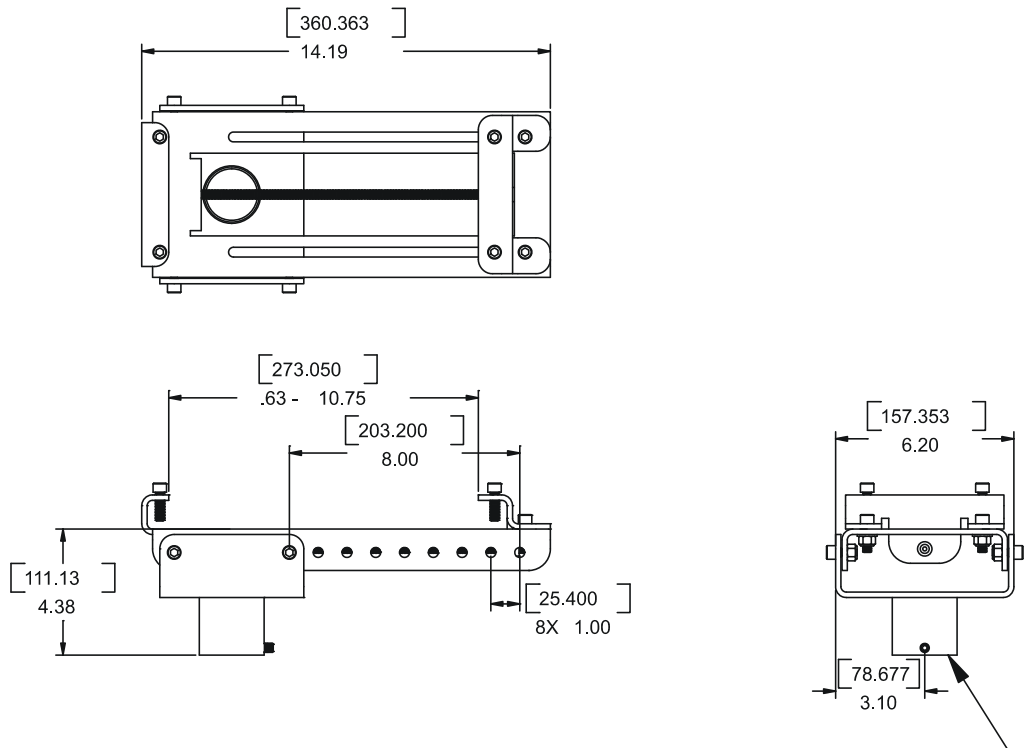


**WARNING:** Exceeding the weight capacity can result in serious personal injury or damage to equipment! It is the installer's responsibility to make sure the combined weight of all components located between the CMA-360 up to (and including) the display/projector does not exceed 250 lbs (113 kg).



**WARNING:** Watch for pinch points. Do not put your fingers between movable parts.

## DIMENSIONS



TOOLS REQUIRED FOR INSTALLATION

- Socket set
- 5/32" Hex Key (provided)
- 1/4" Hex Key (provided)

**NOTE:** Other tools may be required depending on your method of installation.

PARTS

After unpacking carton, inspect and verify contents (See Figure 1). If any listed parts are missing or damaged, contact Chief Customer Service at 1-800-582-6480.

Table 1: Parts

Item	Description	Qty
10	CLAMP, Assembly, I-Beam	1
20	KEY, Hex, 5/32"	1
30	KEY, Hex, 1/4"	1
40	SCREW, Set, 5/16"-18 x 3/8" (installed on 10)	1
50	SCREW, I-Beam Locking (installed on 10)	4
60	SCREW, Sliding Bracket Attach (installed on 10)	2
70	NUT, Sliding Bracket Position (installed on 10)	1
80	SCREW, Carriage Attach (installed on 10)	4
90	NUT, Carriage Attach (installed on 10)	4
100	PIPE, 1-1/2" NPT (required, not supplied)	1

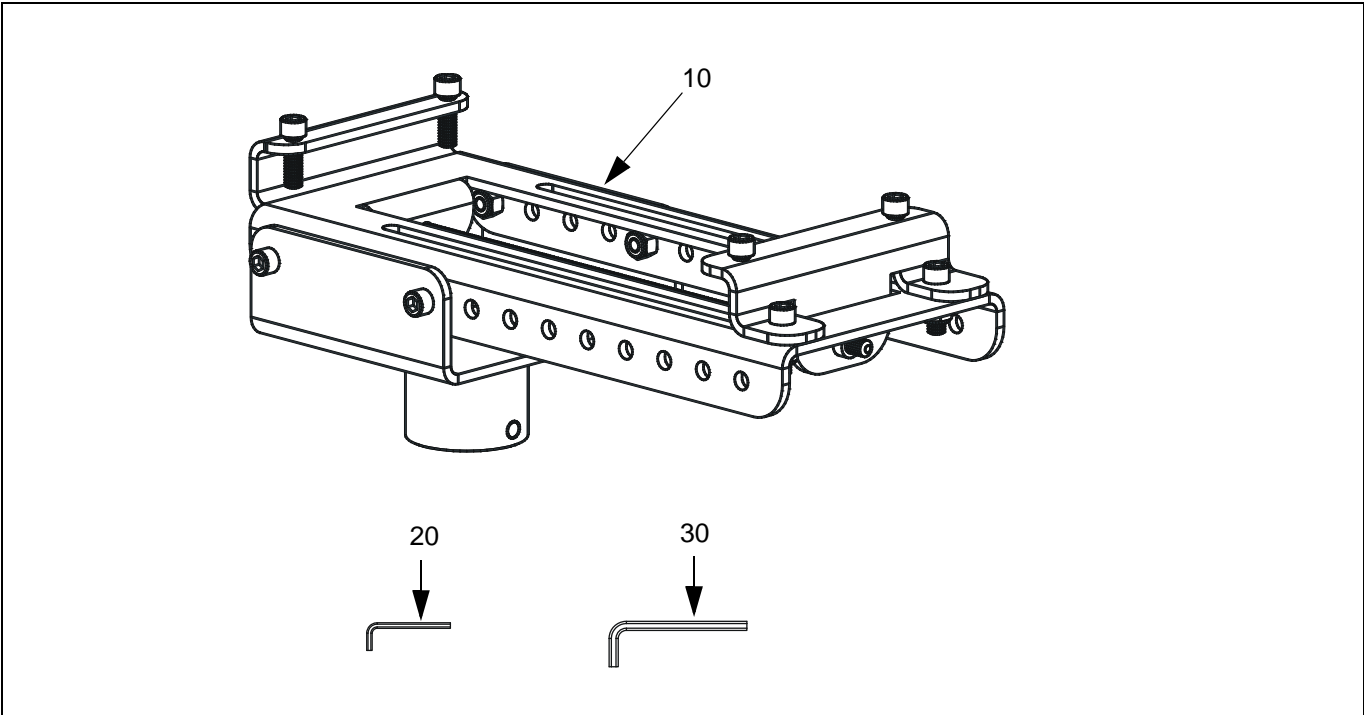
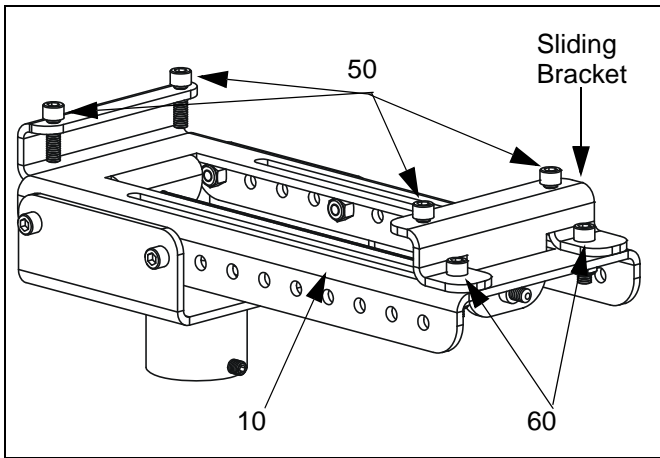


Figure 1: Parts

## INSTALLATION

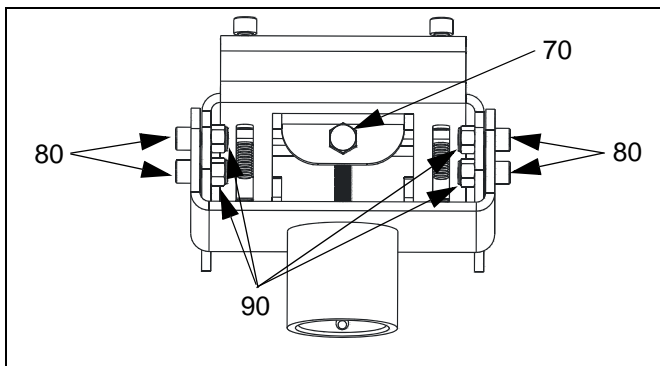
1. Using key (30), loosen screws (50) as required to allow clamp (10) to slip over I-Beam flanges (See Figure 2).



**Figure 2: Setup**

2. Using key (30), loosen screws (60) as required to allow sliding bracket to freely move on upper surface of clamp (10) (See Figure 2). Sliding bracket removal is not necessary.
3. Position clamp (10) against lower face of I-Beam and tighten nut (70) using socket set (See Figure 3). Stop tightening when sliding bracket nearly contacts edges of I-Beam flanges.

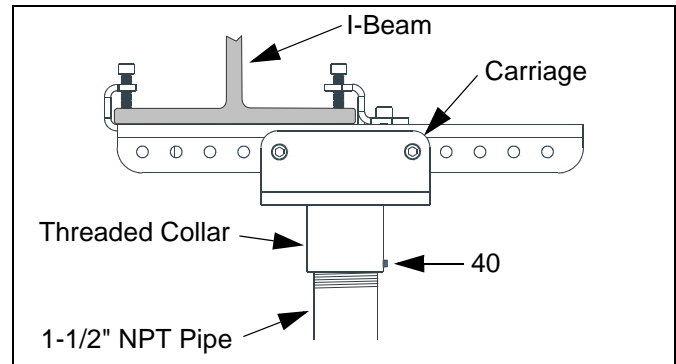
**NOTE:** Clamp should be able to slide along length of I-Beam.



**Figure 3: Sliding Bracket and Carriage Adjustment**

4. Position clamp (10) in desired location and securely tighten screws (60) using hex key (30) (See Figure 2).
5. Using key (30), securely tighten screws (50) (See Figure 2).
6. If carriage relocation is desired complete the following steps (See Figure 3):
  - Remove screws (80) and nuts (90) using key (30) and socket set.

- Reposition column carriage to desired location.
- Re-install screws (80) and nuts (90). Tighten securely.



**Figure 4: Final Installation**

7. Using pipe wrench, install 1-1/2" NPT threaded extension column (accessory purchased separately) into threaded collar until tight (See Figure 4).
8. Using key (20), securely tighten screw (40) (See Figure 4).