



CEILING PLATES

Common Installations



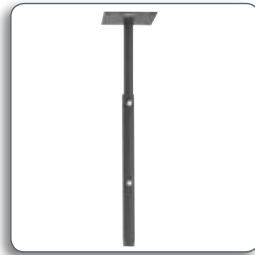
concrete
CMA330 & CMA345



vaulted
CMA395

CMA100™ 8" (203 mm) Ceiling Plate with Adjustable Column

- All-in-one solution for many common ceiling structures
- Extension: 24.25-46" (61.6-116.8 cm) in .75" (19 mm) increments
- Weight Capacity: 500 lbs (227 kg)
- Available in black, silver and white



CMA700™ 6" (152 mm) Ceiling Plate with Adjustable Column

- All-in-one solution for many common ceiling structures
- Extension: 12-18" (305-457 mm) in 1" (25 mm) increments
- Weight Capacity: 500 lbs (227 kg)
- Available in black, silver and white



CMS115™ SpeedConnect Ceiling Plate with 1-1/2" NPT opening

- Low-profile, aesthetic design
- Integrated cable port for a clean installation
- Weight Capacity: 500 lbs (227 kg)
- Available in black, silver and white



CMA101™ Designer Ceiling Plate

- Attractive solution for basic installations
- Two or four bolt installation
- Weight Capacity: 500 lbs (227 kg)
- Available in black, silver and white



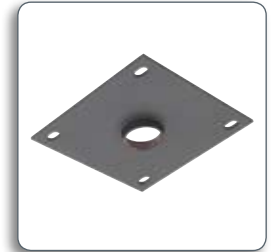
CMA105™ 4" (102 mm) Flat Ceiling Plate

- General purpose ceiling plate with small mounting footprint
- Use with short columns or when mounting space is limited
- Weight Capacity: 500 lbs (227 kg)



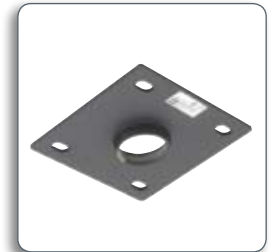
CMA110™ 8" (203 mm) Flat Ceiling Plate

- General purpose ceiling plate with large mounting footprint
- Use with long columns to distribute load
- Weight Capacity: 500 lbs (227 kg)



CMA115™ 6" (152 mm) Flat Ceiling Plate

- General purpose ceiling plate with medium mounting footprint
- Weight Capacity: 500 lbs (227 kg)
- Available in black, silver and white



CMA330™ 8" (203 mm) Offset Ceiling Plate

- Offset provides cable exit when mounting to flat ceiling surfaces
- Offset Height: 1.75" (45 mm)
- Weight Capacity: 500 lbs (227 kg)



CMA345™ Structured Ceiling Plate

- Flexible joint to minimize shock and vibration
- Offset provides cable exit when mounting to flat ceiling surfaces
- Weight Capacity: 500 lbs (227 kg)





CMS390™ Dual Joist Ceiling Plate

- Attaches to finished ceilings and provides lateral shift between joists
- Joist Width: 16" (406 mm)
- Weight Capacity: 500 lbs (227 kg)



CMS391™ Dual Joist Ceiling Plate

- Attaches to finished ceilings and provides lateral shift between joists
- Joist Width: 24" (610 mm)
- Weight Capacity: 500 lbs (227 kg)



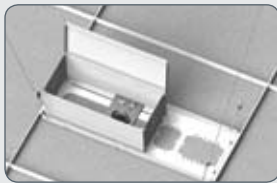
CMA395™ Angled Ceiling Plate

- Adjustable for installation on angled ceilings
- Weight Capacity: 500 lbs (227 kg)
- Available in black and white

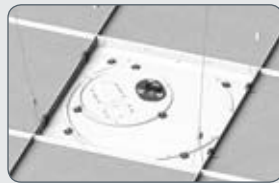


CEILING ADAPTERS

Common Installations



suspended
CMS440 & CMA470



suspended
CMS445

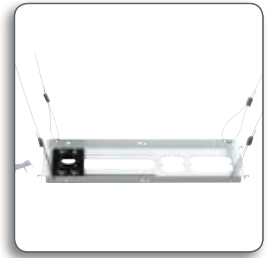
CMA440™ Above-Tile Suspended Ceiling Kit

- Flexible solution supports column placement within 2 x 2' (600 x 600 mm) or 2 x 4' (600 x 1200 mm) ceiling tile
- Includes 10' (3 m) safety cable, 20' (6.1 m) strand wire, four turnbuckles, wood eye bolts, concrete anchors and a chrome finishing ring
- Weight Capacity: 50 lbs (22.7 kg)



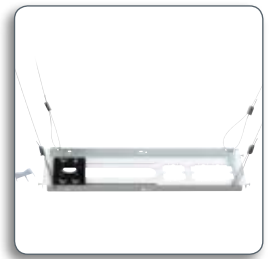
CMS440™ Above-Tile Suspended Ceiling Kit

- Flexible solution provides infinite column placement within 2 x 2' (600 x 600 mm) or 2 x 4' (600 x 1200 mm) ceiling tile
- WireVice™ cable suspension system for quick and easy tie-off
- TwisTile™ ceiling tile cutter easily pierces circular hole for extension column
- Weight Capacity: 50 lbs (22.7 kg)



CMS440P™ Suspended Ceiling Kit with Power Conditioner

- Combines CMS440 with PX2W high-performance power conditioning outlet
- Protects equipment, cleans signal and speeds installation in pre-assembled package
- Weight Capacity: 50 lbs (22.7 kg)



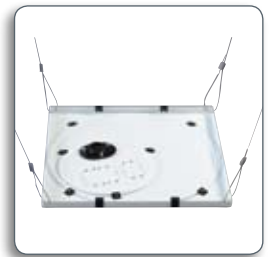
CMA450™ Heavy-Duty, Above-Tile Suspended Ceiling Kit

- Heavy duty solution supports center, side and corner positions within a 2 x 2' (600 x 600 mm) ceiling tile
- Includes 10' (3 m) safety cable, 20' (6.1 m) strand wire, four turnbuckles, wood eye bolts, concrete anchors and a chrome finishing ring
- Weight Capacity: 250 lbs (113.6 kg) center hole, 125 lbs (56.8 kg) side and corner holes



CMS445™ Suspended Ceiling Tile Replacement Kit

- Future-proofs installations by providing post-installation adjustments
- Provides infinite column placement within a 2 x 2' (600 x 600 mm) ceiling tile
- WireVice cable suspension system for quick and easy tie-off
- Weight Capacity: 50 lbs (22.7 kg)





CMS445P™ Suspended Ceiling Tile Replacement Kit with Power Conditioner

- Combines CMS445 with PX2W high-performance power conditioning outlet
- Protects equipment, cleans signal and speeds installation in pre-assembled package
- Weight Capacity: 50 lbs (22.7 kg)



CMA455™ Heavy-Duty Suspended Ceiling Tile Replacement Kit

- Heavy-duty solution supports center column placement within a 2' x 2' (600 x 600 mm) ceiling tile
- Includes 10' (3 m) safety cable, 20' (6.1 m) strand wire, four turnbuckles, wood eye bolts, concrete anchors and a chrome finishing ring
- Weight Capacity: 250 lbs (113.6 kg)



CMA470™ Above-Tile Storage Accessory

- Provides storage for equipment above the suspended ceiling
- Hinged door for easy access
- Compatible with CMS440, CMA440, CMA450 and CMA455 ceiling kits



CMA471™ Above-Tile Large Storage Accessory

- Provides storage for larger equipment above the suspended ceiling
- Hinged door for easy access
- Compatible with CMS440, CMA440, CMA450 and CMA455 ceiling kits



CMA180™ Below-Tile Storage Accessory

- Provides storage for equipment below the suspended ceiling
- Hinged door for easy access
- Compatible with CMA450 and CMA455 ceiling kits

POWER ACCESSORIES

PX2W™ Power Conditioner Outlet

- Wall or ceiling mounted outlet with integrated power conditioning
- Filter removes more noise than many full-sized line conditioners
- Non-volatile spike protection with LED protection indicator can potentially absorb thousands of spikes
- Non-current limiting design passes full power on a regular circuit
- Picture and sound available after protection stops until a replacement can be installed
- Rated for 2160 joules



STRUCTURAL ADAPTERS

Common Installations



truss
CMA365 & CMA366



unistrut
CMA372 & CMA110

CMA300™ Pole Clamp

- Clamps to horizontal poles and transitions to vertical extension column
- Pole Outside Diameter(s): 1.9-3.5" (48-89 mm)
- Weight Capacity: 300 lbs (136.4 kg)



CMA360™ I-Beam Clamp

- Clamps to I-beams and transitions to vertical extension column
- Weight Capacity: 300 lbs (136.4 kg)





CMA362™ C Clamp

- Universal clamp for a variety of structures and transitions to vertical extension column
- Clamp Range: up to 2.75" (70 mm) O.D. (including wood 2 x 4")
- Weight Capacity: 250 lbs (113.6 kg)



CMA365™ Truss Ceiling Adapter

- Universal clamp for square, round, rectangular or I-beam truss
- Clamp Range: 0.75-3" (19-76 mm) O.D.
- Weight Capacity: 250 lbs (113.6 kg)



CMA366™ Architectural Spanning Adapter

- Spans truss systems and provides lateral shift capability
- Span Distance: 5-18" (127-457 mm)
- Clamp Range: up to 2" (51 mm) O.D. or 1.9" (48 mm) square tubing
- Weight Capacity: 250 lbs (113.6 kg)



CMA372™ Offset Unistrut Adapter

- Features offset for transitioning cables out of extension columns
- Includes spring nuts and bolts to attach to 1.63" (41 mm) unistrut
- Weight Capacity: 500 lbs (227 kg)



CMA165™ Internal Joist Ceiling Kit

- Expands to bridge ceiling joists and transition to vertical extension column
- Joist Width: 16 or 24" (406 or 610 mm)
- Weight Capacity: 50 lbs (22.7 kg)



CMA385™ Internal Joist Mount

- Expands to bridge ceiling joists and transition to vertical extension column
- Joist Width: 10-23" (254-584 mm)
- Weight Capacity: 300 lbs (136 kg)



WMA300™ Wall Mount Arm

- Extends from wall and transitions to vertical 3" (76 mm) extension column (included)
- Extension: 18.25" (464 mm)
- Weight Capacity: 150 lbs (68 kg) concrete, 125 lbs (56.8 kg) wood stud



EXTENSION COLUMNS

Common Installations



fixed & adjustable

Model	Length	Model	Length
CMS003*	3" (76 mm)	CMS024	2' (0.6 m)
CMS006*	6" (152 mm)	CMS036	3' (0.9 m)
CMS009	9" (229 mm)	CMS048	4' (1.2 m)
CMS012	12" (305 mm)	CMS060	5' (1.5 m)
CMS018	18" (457 mm)	CMS072	6' (1.8 m)

* Steel construction.

CMS0XX™ Fixed Extension Columns

- Aluminum extension columns feature easy installation and maximum strength
- Flow-through cable management with cable exit port (9" or longer)
- Weight Capacity: 500 lbs (227 kg)
- Available in black, silver and white





CMS0XX0XX™ Adjustable Extension Columns

- Aluminum extension columns feature notched design for adjustment without disassembly
- Flow-through cable management with cable exit port (12" or longer)
- Weight Capacity: 500 lbs (227 kg)
- Available in black, silver and white



Model	Length	Model	Length
CMS006009	6-9" (152-229 mm)	CMS0406	4-6' (1.2-1.8 m)
CMS009012	9-12" (229-305 mm)	CMS0507	5-7' (1.5-2.1 m)
CMS012018	12-18" (305-457 mm)	CMS0608	6-8' (1.8-2.4 m)
CMS018024	18-24" (457-610 mm)	CMS0709	7-9' (2.1-2.7 m)
CMS0203	2-3' (0.6-0.9 m)	CMS0810	8-10' (2.4-3.1 m)
CMS0305	3-5' (0.9-1.5 m)	CMS0911	9-11' (2.7-3.4 m)
		CMS1012*	10-12' (3.1-3.7 m)

* Cannot ship by UPS due to length.

CMA640™ Decorative Ring for Columns

- Conceals pass-through hole cut in ceiling structure for extension column
- Hinged design for new or retrofit installations
- Clamp Range: 1.9" (48 mm) O.D.
- Available in black, chrome and white



CMA642™ Decorative Ring for Columns

- Conceals pass-through hole cut in ceiling structure for outer adjustable extension column
- Hinged design for new or retrofit installations
- 2.44" (62 mm) O.D.



CMA170™ Storage Accessory

- Clamps on to columns for storage of electronic components
- Mounts horizontally or vertically
- Weight Capacity: 25 lbs (11.3 kg)



COLUMN ACCESSORIES

Common Installations



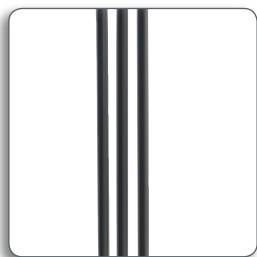
cable management
CMA274



stability
CMA340

CMA274™ Cable Cover for Columns

- Snap-on cover for routing cables alongside extension columns
- Hides cables for a clean appearance
- CMA275: Kit of four CMA274



CMA340™ Stabilization Kit for Columns

- Cable system attaches to extension column for increased rigidity
- Includes one pole clamp, four cables and four turnbuckles
- Weight Capacity: 500 lbs (227 kg)



IN-LINE COLUMN ADAPTERS

Common Installations



vibration
CMA347



electrical
CMA504

CMA270™ Coupler

- Connects two extension columns for extended length applications
- Weight Capacity: 500 lbs (227 kg)
- Available in black, silver and white





CMA152™ Coupler with Cable Port

- Connects two extension columns and integrates a cable exit port
- Weight Capacity: 500 lbs (227 kg)



CMA351™ Coupler with Swivel

- Connects two extension columns with swivel capability
- Swivel Range: 0-330° (with limited adjustment)
- Weight Capacity: 500 lbs (227 kg)



CMA160™ Installation Job Box Coupler

- Connects two extension columns with storage space for electronic equipment
- Features outlet knockouts and plenum rating
- Weight Capacity: 250 lbs (113.6 kg)



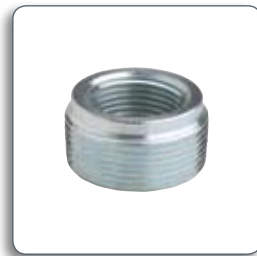
CMA347™ Vibratio Isolating Coupler

- Connects two extension columns and isolates vibration transmitted to lower column
- Patented design isolates vibration to reduce image movement
- Weight Capacity: 0-15 lbs (0-6.8 kg) or 15-35 lbs (6.8-15.9 kg)



CMA151™ Adapter/Reducer

- Adapts 1.5" NPT coupler to 1" NPT column
- Weight Capacity: 250 lbs (113.6 kg)



CMA251™ Adapter/Reducer

- Adapts 2" NPT coupler to 1.5" NPT column
- Weight Capacity: 500 lbs (227 kg)



CMA273™ End Cap

- Covers the end of extension column for clean appearance

CMA278™ Vinyl End Cap

- Covers the end of extension column for clean appearance
- Pre-cut for routing cables through cover
- Ten caps per kit

CMA502™ Electrical Outlet Coupler

- Connects two extension columns and supports one electrical outlets
- Weight Capacity: 500 lbs (227 kg)
- 1-1/2" NPT
- Black

CMA504™ Electrical Outlet Coupler

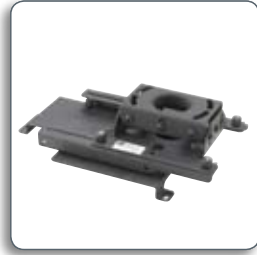
- Connects two extension columns and supports two electrical outlets
- Weight Capacity: 500 lbs (227 kg)
- 1-1/2" NPT
- Black



OTHER INSTALLATION ACCESSORIES

LSB100™ RPA or RPM Projector Lateral Shift Bracket

- Allows lateral shift of projector when used with RPA or RPM mounts
- Maintains quick disconnect feature and includes All-Points Security
- Shift Range: 0-3" (0-76 mm) or 3-5.25" (76-133 mm)
- Weight Capacity: 50 lbs (22.7 kg) at 0-3" or 15 lbs (6.8 kg) at 3-5.25"



LSB101™ RPM with Q-Lock Projector Lateral Shift Bracket

- Allows lateral shift of projector when used with RPM mounts
- Maintains quick disconnect feature and includes All-Points Security
- Shift Range: 0-3" (0-76 mm)
- Weight Capacity: 50 lbs (22.7 kg)



TMA100™ Projector Tripod Mount

- Converts a standard tripod into a projector stand
- Connects SLB custom or universal interfaces (not included)
- Weight Capacity: 25 lbs (11.3 kg)



CMA250™ LCDA Flush Mount Adapter

- Adds flush mount capability to an LCDA projector mount

LPK1™ VCM Flush Mount Adapter

- Adds flush mount capability to an VCM projector mount

CMA290™ Wire Suspension Locks

- Combine with flexible wire rope to hang various equipment
- One-way clamp mechanism and quick-release lever for ease of installation
- Ten clamps per kit

SECURITY

Common Installations



classroom
PG2A

PG1A™ Large Projector Guard

- Fully encloses projector in locked cage to prevent theft or damage
- Adjustable front opening to accommodate different lens positions
- Hinged door for easy access
- Projector Sizes: RPA - 20.4 x 7.5 x 20" (518 x 190 x 508 mm), RPM - 20.4 x 6.5 x 20" (518 x 165 x 508 mm)
- Available in black and white



PG2A™ Large Projector Guard

- Fully encloses projector in locked cage to prevent theft or damage
- Adjustable front opening to accommodate different lens positions
- Hinged door for easy access
- Projector Sizes: RPA - 16 x 7.5 x 16" (406 x 190 x 406 mm), RPM - 16 x 6.5 x 16" (406 x 165 x 406 mm)
- Available in black and white



PL1™ RPA Large Projector Lock

- Conceals projector connection points and adds keyed locking to RPA installations
- Three unique locks available (PL1A, PL1B, PL1C)



PL2™ RPA Small Projector Lock

- Adds keyed locking to RPA installations
- Three unique locks available (PL2A, PL2B, PL2C)



HC1™ Heavy-Duty Cable System

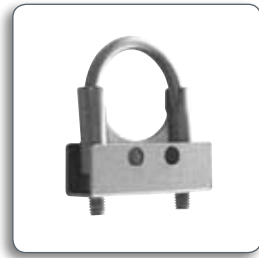
- Security cable system with adhesive pads and SA1 security anchor
- Includes security anchor, vinyl-coated cable, 40 mm padlock, two security pads with rotating cable fasteners, and a tube of instant adhesive





SA1™ Security Anchor

- Provides secure anchor point to 1.5" NPT pipe, truss or other structure
- Security shroud held in position by cable or padlock (not included)



LC1™ Cable System

- Security cable system with adhesive pads for securing sensitive equipment
- Includes 6' (1.8 m) coiled cable, two steel security pads, instant adhesive and a 30 mm padlock



PL4™ Cable Lock

- Security cable system with 3M adhesive-backed steel pad for securing sensitive equipment
- Seamless lock housing with a seven-pin tumbler locking mechanism (two keys provided)

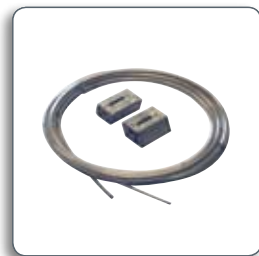
SSC™ Secure Screw Cover Kits

- Prohibit access to equipment mounting screws with cable or padlock (not included)
- SSC1: 3 covers for screws up to #10 (M5), SSC2: 3 covers for screws up to 0.25" (M6), SSC3: 3 covers for screws up to 0.31" (M8), SSC4: for RPA projector mounts



PMSC™ Security Cable Lock

- Use with security projector mounts to deter theft attempts by tearing out projector inserts
- One-way clamp mechanism and quick-release lever for ease of installation
- Includes two locks and two cables with protective tubing



SEC2™ Security Cable Kit for New SLBU

- Use with RPA series or RPA Elite series mounts with new SLBU for additional security
- One-way clamp mechanism and quick-release lever for ease of installation
- Includes two locks and two cables



PROJECTOR STACKERS

LCD2C™ Dual Projector Ceiling Stacker

- Ceiling mount accessory for two vertically-stacked projectors
- Requires two RPA or RPM projector mounts
- Projector Width: 18" (457 mm)
- Weight Capacity: 100 lbs (45.5 kg)



LCD2TS™ Dual Projector Table Stand Stacker

- Table stand accessory for two vertically-stacked projectors
- Requires two RPA or RPM projector mounts
- Projector Width: 18" (457 mm)
- Weight Capacity: 100 lbs (45.5 kg)



LCDB™ Stacker Base

- Use with extension columns to create custom table stand projector stacker system
- Max Column Length: 3' (0.9 m)
- Weight Capacity: 100 lbs (45.5 kg)

LCDPA™ Stacker Arm

- Use with extension columns to create custom projector stacker system
- Attaches to RPA or RPM projector mounts
- Weight Capacity: 50 lbs (22.7 kg)

LCDCP™ Stacker Ceiling Plate

- Use with extension columns to create custom table stand projector stacker system
- Max Column Length: 6' (1.8 m)
- Weight Capacity: 100 lbs (45.5 kg)



PROJECTOR KITS

KITES003™ Projector
Suspended Ceiling Kit

- Includes RPMU, CMS003, CMS440



KITES003P™ Projector Suspended Ceiling Kit

- Includes RPMU, CMS003, CMS440, CMA470

KITLS003™ Projector
Suspended Ceiling Kit

- Includes RPMA1, CMS003, CMS440



KITLS012018™ Projector
Suspended Ceiling Kit

- Includes RPMA1, CMS012018, CMS440



KITPA018024™ Projector
Angled Ceiling Kit

- Includes RPAU, CMS018024, CMA395



KITPD003™ Projector Flat
Ceiling Kit

- Includes RPAU, CMS003, CMS115



KITPD0XX0XX™ Projector
Flat Ceiling Kit

- KITPD012018 includes RPAU, CMS012018, CMS115
- KITPD0203 includes RPAU, CMS0203, CMS115
- KITPD0305 includes RPAU, CMS0305, CMS115



KITPS003™ Projector
Suspended Ceiling Kit

- KITPS003 includes RPAU, CMS003, CMS440



KITPS012C™ Projector Suspended Ceiling Kit

- Includes RPAU, CMS012018, CMS440, CMA170

KITQS012C™ Projector Suspended Ceiling Kit

- Includes RPMAU, CMS012, CMS440, CMA170

