
INSTALLATION INSTRUCTIONS

CABLE MANAGEMENT CAP

CMA-274

The CMA-274 cable management cap is an esthetically pleasing protection for exposed wiring. The cable management cap will fit a pipe with an outside diameter of 2 to 2 ¾ inches.

WARNING: IMPROPER INSTALLATION MAY RESULT IN SERIOUS PERSONAL INJURY!

When mounting Chief Manufacturing accessories, the structural system and mounting method **MUST** be capable of supporting 5 times the combined weight of the total installation.

- (1) CAP, Cable Management, 4" Length

Unpack and check contents:

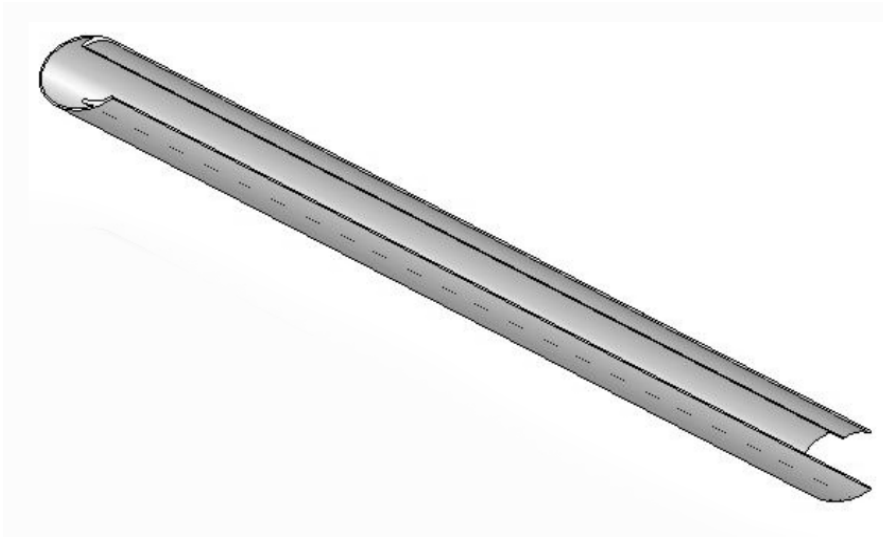


Figure 1. Parts

1. Route wiring along side of pipe or pole.
2. Using a tin snips, or appropriate cutting tool, trim cable management cap (see Figure 1) to desired length as necessary.
3. Install cable management cap over wiring, snapping it onto pipe.
4. Secure wiring at each end of cable management cap using tie wrap, electrical tape, or other suitable fastener.