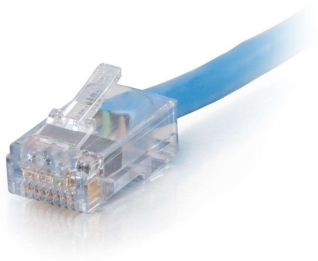




C2G  
7ft (2.1m) Cat6 Non-Booted UTP Unshielded Ethernet Network Patch Cable - Plenum CMP-Rated (TAA Compliant) - Blue  
Part No. CG-15280



Strict building code requirements for cabling in plenum spaces have created installation challenges in settings such as schools, hospitals and other commercial buildings. C2G has expanded its connectivity portfolio to include a line of cables that are ideal for routing through plenum space above dropped ceilings or under raised floors.

Applications include voice/data/video distribution; this cable will handle bandwidth-intensive applications . Meets all Cat6 TIA/EIA standards, and reduces both impedance and structural return loss (SRL) .

Constructed from high quality plenum cable, this design minimizes Near-End Crosstalk (NEXT) levels. Available in Gray, Blue and Black to easily color-code your network installation.

## Features & Benefits

Rated for Plenum, in-wall installations

Cat6 cable with standard RJ45 connectors

Available in lengths up to 100ft

## Specifications

### General Info

Product Line	C2G	Color	Blue
UPC Number	757120152804	Country Of Origin	Mexico
Features	PoE (Power Over Ethernet)	Application Sector	Commercial, Industrial, Residential
Warranty Type	Lifetime	Type	Cable

### Dimensions

Product Length US	7.0 FT	Cable Length	7 ft
-------------------	--------	--------------	------

### Trade Programs

TAA Compliant	Yes
---------------	-----

### Technical Information

Jacket Material	PVC (Polyvinyl Chloride)	Category Performance Rating	Cat 6
Wire Gauge	23 AWG	Jacket Application	Plenum Rated
Shielded/Unshielded	Unshielded	Shield Type	UTP
Cable Type	Ethernet Patch Cable	Jacket Rating	CMP Rated, FT6 Rated
Connector Type	Non-booted	Indoor/Outdoor	Indoor
Connector 2	RJ-45 Male	Connector 1	RJ-45 Male