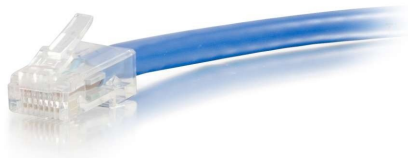




C2G

6ft (1.8m) Cat6 Non-Booted Unshielded (UTP) Ethernet Network Patch Cable - Blue

Part No. CG-04090



For fast Ethernet and Gigabit computer networks that require bandwidth-intensive voice, data, or video distribution applications. Meets all Cat6 TIA/EIA standards, and drastically reduces both impedance and structural return loss (SRL). Each of the individual pairs is bonded together to help maintain the twist-spacing throughout the line right up to the termination point. Constructed from high quality copper cable, this design minimizes Near-End Crosstalk (NEXT) levels. Available in a variety of colors to easily color-code your network installation.

Features & Benefits

Designed for network adapters, hubs, switches, routers, HDBaseT applications and more

Supports 10 Gigabit networks up to 180ft for fast data transmission and maximum performance and supports 1 Gigabit up to 328ft

Meets all Cat6 TIA/EIA requirements for supporting a wide variety of applications

Constructed with unshielded twisted pair (UTP) wires, designed to counter EMI, RFI, and crosstalk

Available in a variety of colors to color-code a network

Specifications

General Info

Product Line	C2G	Color	Blue
UPC Number	757120040903	Country Of Origin	Vietnam
Features	PoE (Power Over Ethernet)	Application Sector	Commercial, Industrial, Residential
Warranty Type	Lifetime	Type	Cable

Dimensions

Product Length US	6.0 FT	Cable Length	6 ft
-------------------	--------	--------------	------

Listing Agencies / 3rd Party Agencies

CE Certified	Yes	REACH Compliant	Yes
--------------	-----	-----------------	-----

Additional Information

RoHS Compliant Yes

Technical Information

Jacket Material	PVC (Polyvinyl Chloride)	Category Performance Rating	Cat6
Wire Gauge	24 AWG	Shielded/Unshielded	Unshielded
Shield Type	UTP	Cable Type	Ethernet Patch Cable
Jacket Rating	Standard / Non-Rated	Cable Diameter	6 mm
Connector Type	Non-booted	Indoor/Outdoor	Indoor
Connector 2	RJ-45 Male	Connector 1	RJ-45 Male