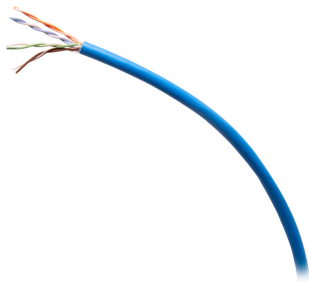




C2G  
1000ft (304.8m) TAA-Compliant Cat5e Bulk Unshielded (UTP) Ethernet Network Cable with Solid Conductors-Plenum CMP-Rated - Blue  
Part No. CG-C2G56029



C2G's TAA-Compliant Cat5e Bulk Cable is an excellent choice for custom length horizontal network cable runs. Supporting a sweep frequency up to 350 MHz, this cable meets ANSI/TIA-568.2-D (2018) standards and includes features for easier installation. Its innovative slim packaging saves storage and shipping space, reducing inventory and shipping costs. Additionally, it is more sustainable, using 40% less plastic and cardboard while providing an improved cable pulling experience.

### Features & Benefits

TAA Complaint	Supports data frequency range up to 350 MHz
Plenum CMP-rated jacket	Meets ANSI/TIA-568.2-D specification
Innovative, sustainable packaging with space-saving design and seamless cable pulling experience	

### Specifications

#### General Info

Product Line	C2G	Color	Blue
UPC Number	757120560296	Country Of Origin	Taiwan, Province Of China
Application Sector	Commercial, Industrial, Residential	Warranty Type	Lifetime
Type	Cable		

#### Dimensions

Product Length US	1000.0 FT	Cable Length	1000 ft
-------------------	-----------	--------------	---------

#### Listing Agencies / 3rd Party Agencies

CE Certified	Yes	REACH Compliant	Yes
--------------	-----	-----------------	-----

#### Buy American Act Compliance

TAA Compliant	Yes
---------------	-----

#### Technical Information

Jacket Material	LSFRPVC (Low Smoke Flame Retardant Polyvinyl Chloride)	Category Performance Rating	Cat 5e
Wire Gauge	24 AWG	Jacket Application	Plenum Rated
Bend Radius	17.6 mm	Shielded/Unshielded	Unshielded
Conductor	4-Pair Twisted	Cable Type	Bulk
Jacket Rating	CMP Rated	Cable Diameter	4.4 mm
Connector Type	Bare Wire	Operating Temperature	-4°-140°F (-20°-60°C)
Conductor Material	Copper	Voltage	300.0 V

Insulation Material	FEP (Fluorinated Ethylene Propylene)	Storage Temperature	-20° - 75° C, -4° - 167° F
---------------------	--------------------------------------	---------------------	----------------------------