

## DISPLAYPORT CABLES - TAA COMPLIANT

### TAA-Compliant DisplayPort™ Cable with Latches - 8K 60Hz

The C2G TAA-Compliant DisplayPort™ Cable with Latches – 8K 60Hz offers excellent video and audio performance, making it ideal for high-resolution displays and professional use. It meets the DisplayPort 1.4 standard, supporting 8K resolution at 60Hz (7680 x 4320) for clear, detailed visuals. With a data bandwidth of up to 32.4Gbps, it delivers uncompressed audio and deep color depth.

This cable is ideal for connecting a computer's DisplayPort output to a monitor with a DisplayPort input. Latching connectors ensure a secure connection, making it perfect for demanding applications.



Front



Side

ITEM	DESCRIPTION
C2G50112	3ft (0.9m) C2G TAA-Compliant DisplayPort™ Cable with Latches - 8K 60Hz
C2G50113	6ft (1.8m) C2G TAA-Compliant DisplayPort™ Cable with Latches - 8K 60Hz
C2G50114	10ft (3m) C2G TAA-Compliant DisplayPort™ Cable with Latches - 8K 60Hz

# DISPLAYPORT CABLES - TAA COMPLIANT

---

TAA-Compliant DisplayPort™ Cable  
with Latches - 8K 60Hz

## FEATURES

- TAA Compliant
- Fully compliant with the DisplayPort 1.4 specification
- Supports 8K resolution at 60Hz (7680 x 4320) with Display Stream Compression (DSC), and 8K at 30Hz without DSC, delivering clear, detailed visuals
- Supports data bandwidth up to 32.4Gbps
- **Cable jacket:**  
VW-1 rated, compliant with UL standards, ensuring safe and reliable performance for basic applications
- Secure connection with latches to prevent accidental disconnections
- Backed by a C2G lifetime warranty



# DISPLAYPORT CABLES - TAA COMPLIANT

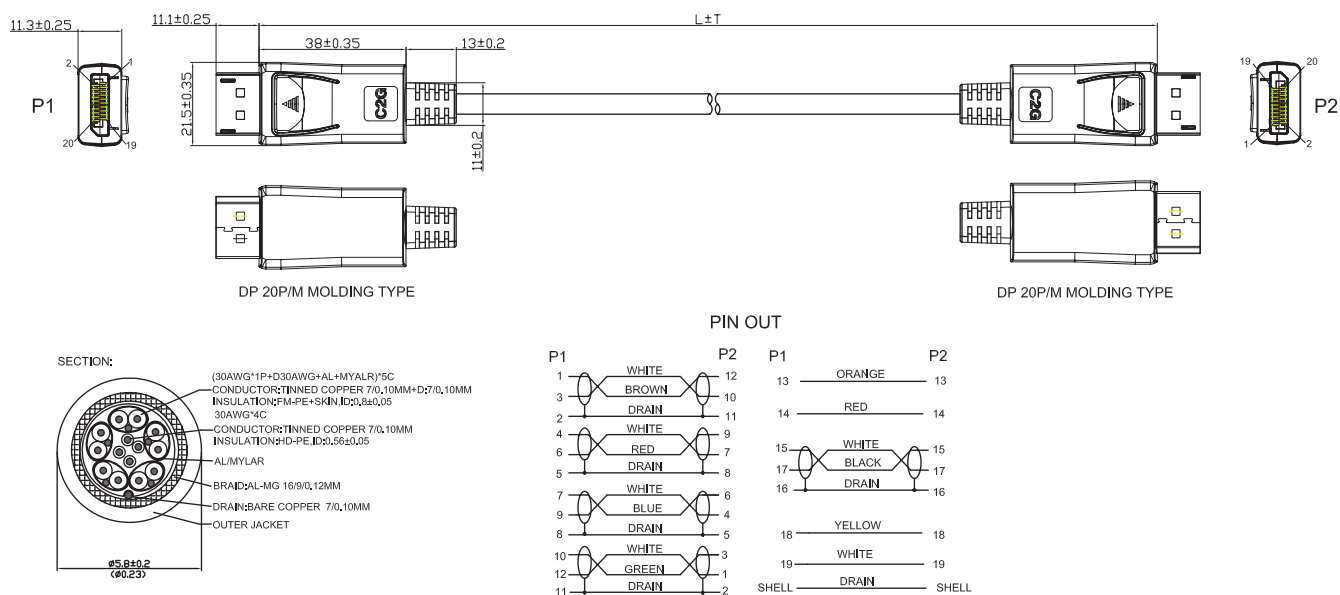
## Specifications

		C2G50112-14
PHYSICAL SPECIFICATIONS	Minimum Bend Radius	C2G50112-13: 58mm
		C2G50114: 70mm
	Jacket Rating	VW-1
	C2G50112-13	30AWG
		OD: 5.8±0.2 mm
	C2G50114	28AWG
		OD: 7.0±0.2mm
ELECTRICAL SPECIFICATIONS	Voltage	30V
	Conductor Resistance	3 Ω Max
	Insulation Resistance	DC200V, 10MΩ Min
PHYSICAL CHARACTERISTICS	Housing	Plastic, Black
	Cable	PVC, Black
	Length	C2G50112 : 3' ± 1.19"
		C2G50113 : 6' ± 1.97"
		C2G50114 : 10' ± 1.97"
	Shell	Metal, Black
	Operation Temperature	-20°C to 80°C
	Storage Temperature	-10°C to 55°C
	Regulatory Approvals	CE marked; Conforms to 2011/65/EU ROHS 2
CONNECTORS	Connector Type 1	DisplayPort Latching Male
	Connector Type 2	DisplayPort Latching Male
SIGNAL SPECIFICATIONS	DisplayPort	1.4
	Eye Diagram	8.1G
	Data Transfer Rate	32.4Gbps
	Video Resolution	8K (7680 X 4320)
	Refresh Rate	60Hz (with DSC), 30Hz (without DSC)

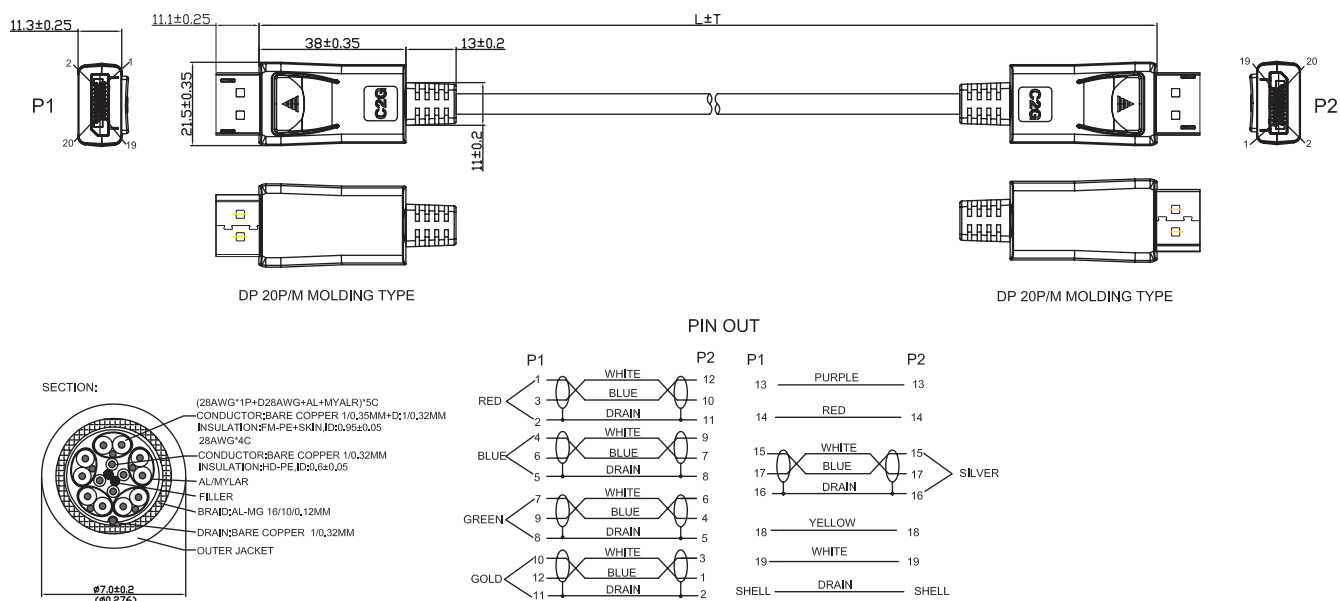
# DISPLAYPORT CABLES - TAA COMPLIANT

## TECHNICAL DRAWINGS

C2G50112-13



C2G50114



LEGRAND | AV COMMERCIAL BRANDS

C2G | Chief | Da-Lite | Luxul | Middle Atlantic | Vaddio | Wiremold

### SIMPLIFIED CONNECTIVITY

USA 800.506.9607 customer-service@c2g.com

APAC +852 2145 4099 av.asia.sales@legrand.com

EMEA +31 495 580 840 c2g.emea@av.legrand.com